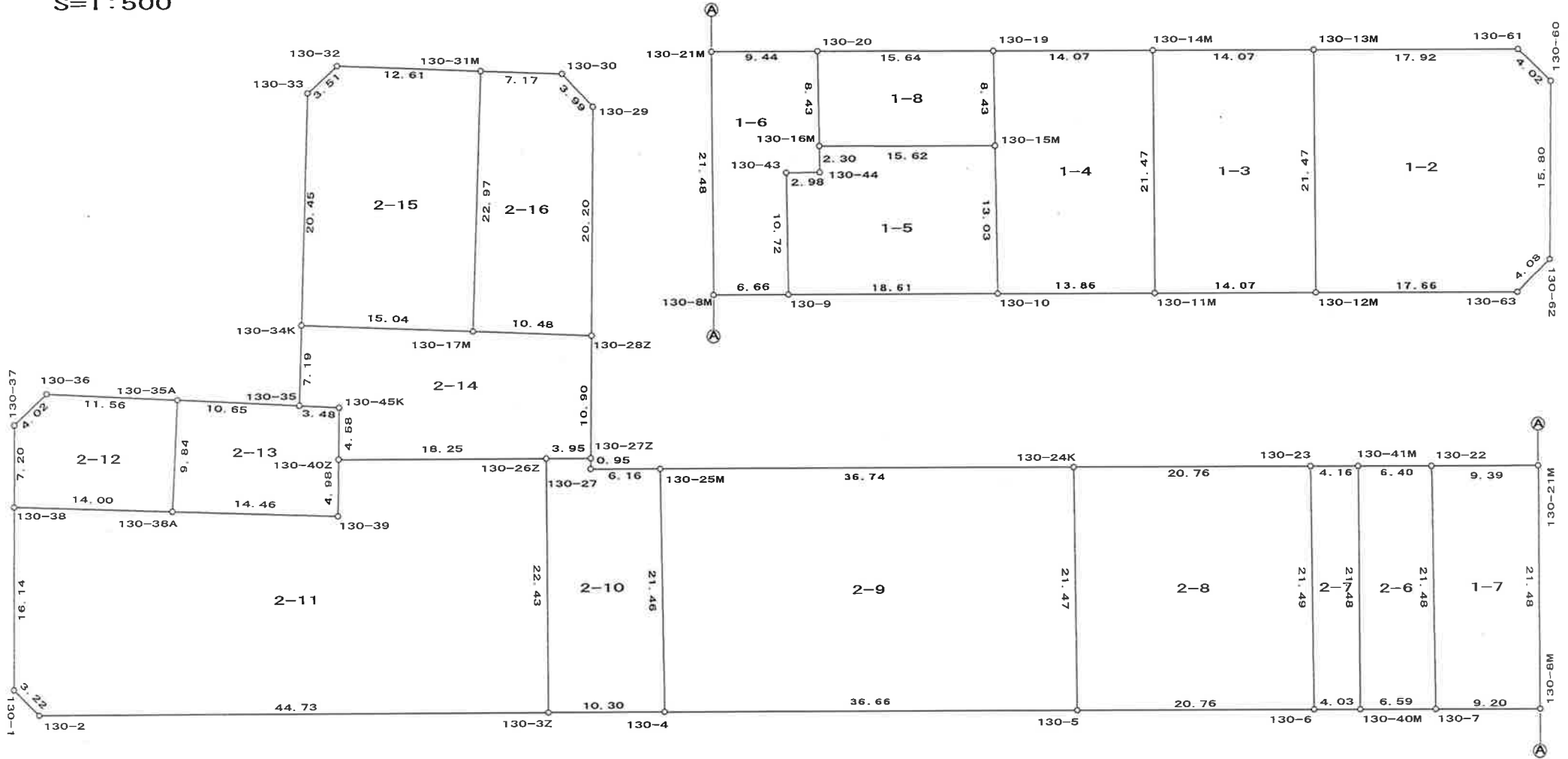
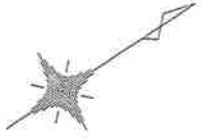


# 野村六丁目字北堀池 (旧130街区)

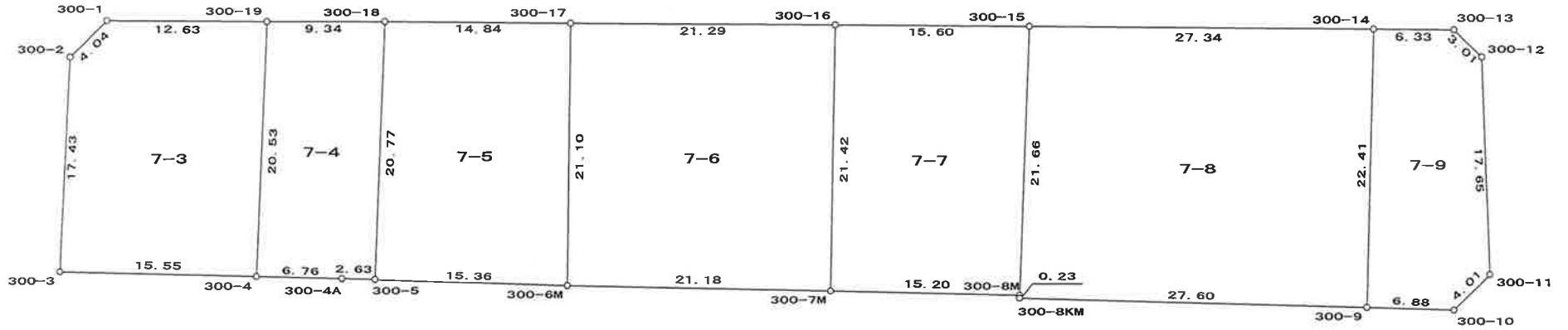
S=1:500





野村六丁目字北堀池  
(旧300街区)

S=1 : 500

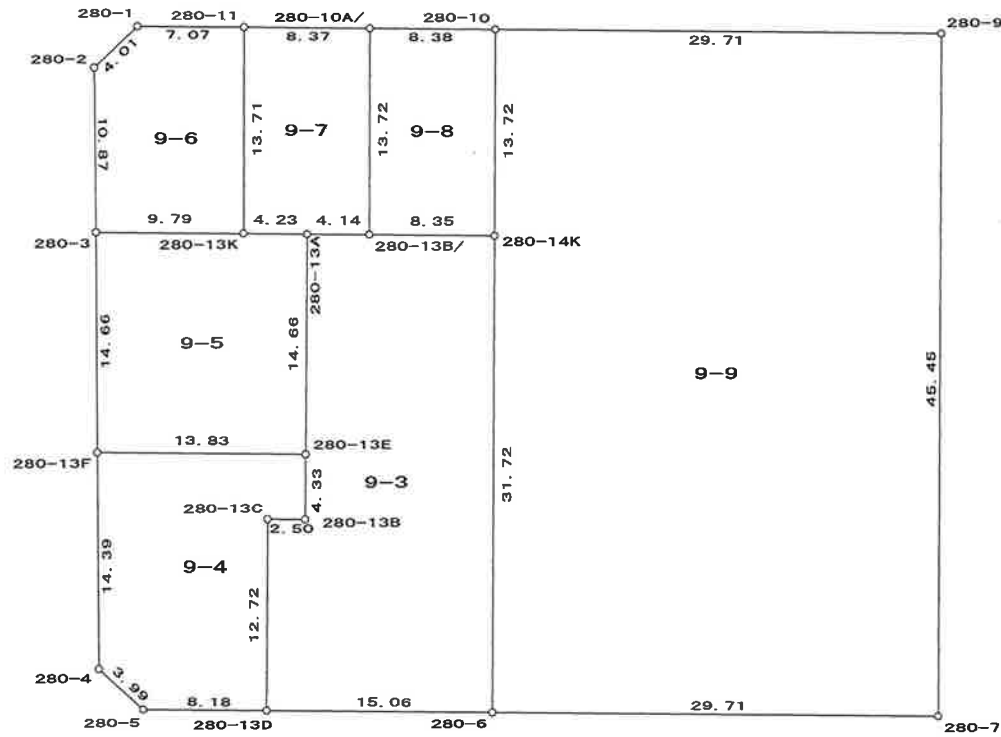


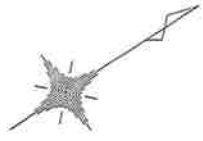




野村六丁目字北堀池  
(旧280街区)

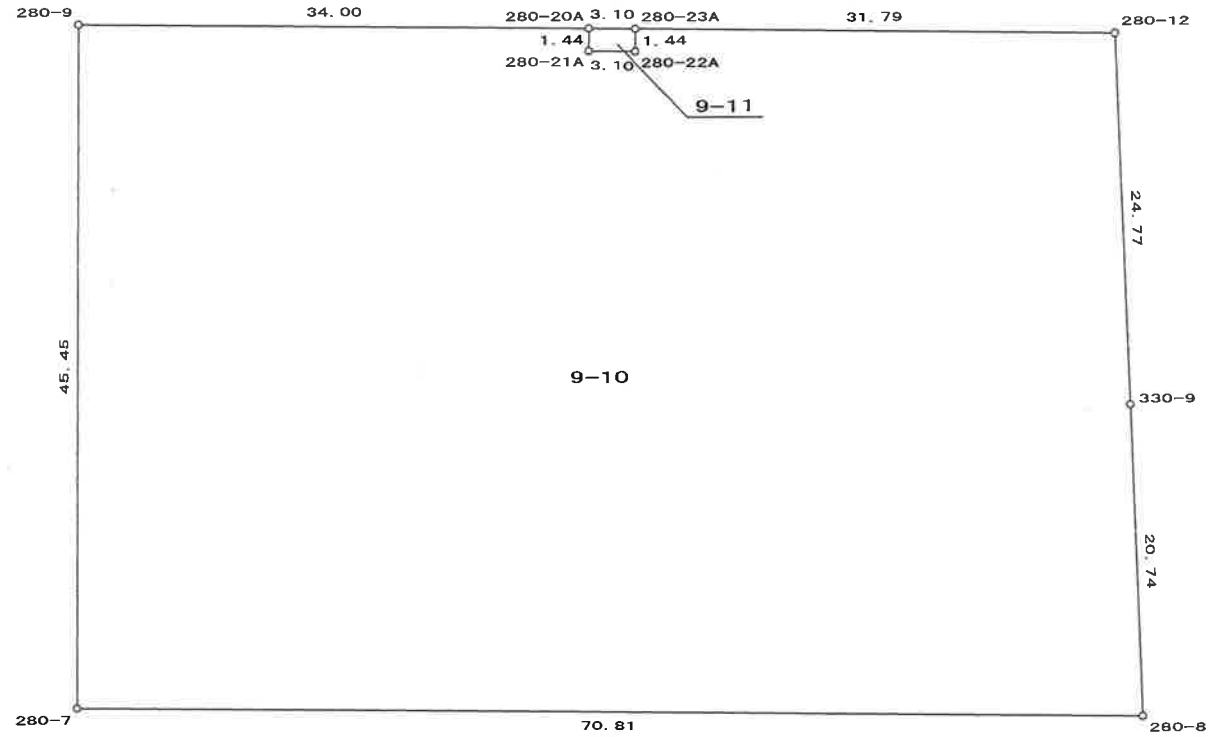
S=1:500





野村六丁目字北堀池  
(旧281街区)

S=1 : 500



面積 (倍横距法) 計算書

地番 = 1-1

| 器械点    | 視準点    | 内角       | 方向角       | 距離   | 緯距     | 経距     | X座標         | Y座標       | 倍横距   | 倍面積       |
|--------|--------|----------|-----------|------|--------|--------|-------------|-----------|-------|-----------|
| 130-63 | KO-104 | 44-24-30 | 122-57-20 | 2.88 | -1.568 | 2.418  | -108353.685 | -3875.712 | 2.418 | -3.791722 |
| KO-104 | 130-62 | 90-47-06 | 33-44-26  | 2.86 | 2.380  | 1.590  | -108351.305 | -3874.122 | 6.426 | 15.293963 |
| 130-62 | 130-63 | 44-48-24 | 258-32-50 | 4.08 | -0.812 | -4.008 | -108352.117 | -3878.130 | 4.008 | -3.254496 |
| 合計     |        |          |           |      |        |        |             |           | 倍面積   | 8.247745  |
|        |        |          |           |      |        |        |             |           | 面積    | 4.12      |

面積 (倍横距法) 計算書

| 地番 = 1-2<br>器械点 | 視準点     | 内角        | 方向角       | 距離    | 緯距      | 経距      | X座標         | Y座標       | 倍横距     | 倍面積        |
|-----------------|---------|-----------|-----------|-------|---------|---------|-------------|-----------|---------|------------|
| 130-13M         | 130-12M | 90-01-11  | 212-56-53 | 21.47 | -18.023 | -11.681 | -108342.512 | -3892.950 | -11.681 | 210.526663 |
| 130-12M         | 130-63  | 89-59-59  | 122-56-52 | 17.66 | -9.605  | 14.820  | -108352.117 | -3878.130 | -8.542  | 82.045910  |
| 130-63          | 130-62  | 135-35-58 | 78-32-50  | 4.08  | 0.812   | 4.008   | -108351.305 | -3874.122 | 10.286  | 8.352232   |
| 130-62          | 130-60  | 135-11-17 | 33-44-07  | 15.80 | 13.146  | 8.779   | -108338.159 | -3865.343 | 23.073  | 303.317658 |
| 130-60          | 130-61  | 133-34-15 | 347-18-22 | 4.02  | 3.929   | -0.885  | -108334.230 | -3866.228 | 30.967  | 121.669343 |
| 130-61          | 130-13M | 135-37-20 | 302-55-42 | 17.92 | 9.741   | -15.041 | -108324.489 | -3881.269 | 15.041  | 146.514381 |
| 合計              |         |           |           |       |         |         |             |           | 倍面積     | 872.426187 |
|                 |         |           |           |       |         |         |             |           | 面積      | 436.21     |

面積（倍横距法）計算書

| 地番 = 1-3<br>器械点 | 視準点     | 内角       | 方向角       | 距離    | 緯距      | 経距      | X座標         | Y座標       | 倍横距     | 倍面積        |
|-----------------|---------|----------|-----------|-------|---------|---------|-------------|-----------|---------|------------|
| 130-14M         | 130-11M | 90-01-05 | 212-56-57 | 21.47 | -18.019 | -11.679 | -108334.858 | -3904.759 | -11.679 | 210.443901 |
| 130-11M         | 130-12M | 90-00-00 | 122-56-57 | 14.07 | -7.654  | 11.809  | -108342.512 | -3892.950 | -11.549 | 88.396046  |
| 130-12M         | 130-13M | 89-59-56 | 32-56-53  | 21.47 | 18.023  | 11.681  | -108324.489 | -3881.269 | 11.941  | 215.212643 |
| 130-13M         | 130-14M | 89-58-59 | 302-55-52 | 14.07 | 7.650   | -11.811 | -108316.839 | -3893.080 | 11.811  | 90.354150  |
| 合計              |         |          |           |       |         |         |             |           | 倍面積     | 604.406740 |
|                 |         |          |           |       |         |         |             |           | 面積      | 302.20     |



面積 (倍横距法) 計算書

| 地番 = 1-4<br>器械点 | 視準点     | 内角        | 方向角       | 距離    | 緯距      | 経距      | X座標         | Y座標       | 倍横距     | 倍面積        |
|-----------------|---------|-----------|-----------|-------|---------|---------|-------------|-----------|---------|------------|
| 130-19          | 130-15M | 89-28-23  | 212-24-07 | 8.43  | -7.125  | -4.522  | -108316.314 | -3909.414 | -4.522  | 32.219250  |
| 130-15M         | 130-10  | 180-00-00 | 212-24-07 | 13.03 | -11.001 | -6.982  | -108327.315 | -3916.396 | -16.026 | 176.302026 |
| 130-10          | 130-11M | 90-32-56  | 122-57-03 | 13.86 | -7.543  | 11.637  | -108334.858 | -3904.759 | -11.371 | 85.771453  |
| 130-11M         | 130-14M | 89-59-54  | 32-56-57  | 21.47 | 18.019  | 11.679  | -108316.839 | -3893.080 | 11.945  | 215.236955 |
| 130-14M         | 130-19  | 89-58-47  | 302-55-44 | 14.07 | 7.650   | -11.812 | -108309.189 | -3904.892 | 11.812  | 90.361800  |
| 合計              |         |           |           |       |         |         |             |           | 倍面積     | 599.891484 |
|                 |         |           |           |       |         |         |             |           | 面積      | 299.94     |

面積 (倍横距法) 計算書

| 地番 = 1-5<br>器械点 | 視準点     | 内角        | 方向角       | 距離    | 緯距      | 経距      | X座標         | Y座標       | 倍横距     | 倍面積        |
|-----------------|---------|-----------|-----------|-------|---------|---------|-------------|-----------|---------|------------|
| 130-16M         | 130-44  | 89-14-40  | 212-18-00 | 2.30  | -1.952  | -1.234  | -108309.742 | -3923.746 | -1.234  | 2.408768   |
| 130-44          | 130-43  | 270-15-45 | 302-33-45 | 2.98  | 1.608   | -2.518  | -108308.134 | -3926.264 | -4.986  | -8.017488  |
| 130-43          | 130-9   | 89-51-08  | 212-24-53 | 10.72 | -9.057  | -5.751  | -108317.191 | -3932.015 | -13.255 | 120.050535 |
| 130-9           | 130-10  | 90-32-10  | 122-57-03 | 18.61 | -10.124 | 15.619  | -108327.315 | -3916.396 | -3.387  | 34.289988  |
| 130-10          | 130-15M | 89-27-04  | 32-24-07  | 13.03 | 11.001  | 6.982   | -108316.314 | -3909.414 | 19.214  | 211.373214 |
| 130-15M         | 130-16M | 90-39-13  | 303-03-20 | 15.62 | 8.524   | -13.098 | -108307.790 | -3922.512 | 13.098  | 111.647352 |
| 合計              |         |           |           |       |         |         |             |           | 倍面積     | 471.752369 |
|                 |         |           |           |       |         |         |             |           | 面積      | 235.87     |

面積 (倍横距法) 計算書

| 地番 = 1-6<br>器械点 | 視準点     | 内角        | 方向角       | 距離    | 緯距      | 経距      | X座標         | Y座標       | 倍横距     | 倍面積        |
|-----------------|---------|-----------|-----------|-------|---------|---------|-------------|-----------|---------|------------|
| 130-21M         | 130-8M  | 90-02-29  | 212-54-49 | 21.48 | -18.039 | -11.676 | -108313.570 | -3937.610 | -11.676 | 210.623364 |
| 130-8M          | 130-9   | 89-59-48  | 122-54-37 | 6.66  | -3.621  | 5.595   | -108317.191 | -3932.015 | -17.757 | 64.298097  |
| 130-9           | 130-43  | 89-30-16  | 32-24-53  | 10.72 | 9.057   | 5.751   | -108308.134 | -3926.264 | -6.411  | -58.064427 |
| 130-43          | 130-44  | 270-08-52 | 122-33-45 | 2.98  | -1.608  | 2.518   | -108309.742 | -3923.746 | 1.858   | -2.987664  |
| 130-44          | 130-16M | 89-44-15  | 32-18-00  | 2.30  | 1.952   | 1.234   | -108307.790 | -3922.512 | 5.610   | 10.950720  |
| 130-16M         | 130-20  | 180-00-15 | 32-18-15  | 8.43  | 7.133   | 4.510   | -108300.657 | -3918.002 | 11.354  | 80.988082  |
| 130-20          | 130-21M | 90-34-05  | 302-52-20 | 9.44  | 5.126   | -7.932  | -108295.531 | -3925.934 | 7.932   | 40.659432  |
| 合計              |         |           |           |       |         |         |             |           | 倍面積     | 346.467604 |
|                 |         |           |           |       |         |         |             |           | 面積      | 173.23     |

面積 (倍横距法) 計算書

| 地番 = 1-7<br>器械点 | 視準点     | 内角       | 方向角       | 距離    | 緯距      | 経距      | X座標         | Y座標       | 倍横距     | 倍面積        |
|-----------------|---------|----------|-----------|-------|---------|---------|-------------|-----------|---------|------------|
| 130-22          | 130-7   | 89-32-57 | 212-24-55 | 21.48 | -18.134 | -11.515 | -108308.568 | -3945.338 | -11.515 | 208.813010 |
| 130-7           | 130-8M  | 90-29-53 | 122-54-48 | 9.20  | -5.002  | 7.728   | -108313.570 | -3937.610 | -15.302 | 76.540604  |
| 130-8M          | 130-21M | 90-00-01 | 32-54-49  | 21.48 | 18.039  | 11.676  | -108295.531 | -3925.934 | 4.102   | 73.995978  |
| 130-21M         | 130-22  | 89-57-09 | 302-51-58 | 9.39  | 5.097   | -7.889  | -108290.434 | -3933.823 | 7.889   | 40.210233  |
| 合計              |         |          |           |       |         |         |             |           | 倍面積     | 399.559825 |
|                 |         |          |           |       |         |         |             |           | 面積      | 199.77     |

面積 (倍横距法) 計算書

| 地番 = 1-8<br>器械点 | 視準点     | 内角       | 方向角       | 距離    | 緯距     | 経距      | X座標         | Y座標       | 倍横距    | 倍面積        |
|-----------------|---------|----------|-----------|-------|--------|---------|-------------|-----------|--------|------------|
| 130-20          | 130-16M | 89-14-53 | 212-18-15 | 8.43  | -7.133 | -4.510  | -108307.790 | -3922.512 | -4.510 | 32.169830  |
| 130-16M         | 130-15M | 90-45-05 | 123-03-20 | 15.62 | -8.524 | 13.098  | -108316.314 | -3909.414 | 4.078  | -34.760872 |
| 130-15M         | 130-19  | 89-20-47 | 32-24-07  | 8.43  | 7.125  | 4.522   | -108309.189 | -3904.892 | 21.698 | 154.598250 |
| 130-19          | 130-20  | 90-39-15 | 303-03-22 | 15.64 | 8.532  | -13.110 | -108300.657 | -3918.002 | 13.110 | 111.854520 |
| 合計              |         |          |           |       |        |         |             |           | 倍面積    | 263.861728 |
|                 |         |          |           |       |        |         |             |           | 面積     | 131.93     |

## 面積 (倍横距法) 計算書

| 地番 = 2-1<br>器械点 | 視準点     | 内角        | 方向角       | 距離    | 緯距      | 経距     | X座標         | Y座標       | 倍横距     | 倍面積          |
|-----------------|---------|-----------|-----------|-------|---------|--------|-------------|-----------|---------|--------------|
| K7K             | K7KA    | 179-51-18 | 216-31-42 | 0.59  | -0.480  | -0.356 | -108252.103 | -4065.643 | -0.356  | 0.170750     |
| K7KA            | 120-28  | 86-24-06  | 122-55-48 | 8.56  | -4.656  | 7.189  | -108256.759 | -4058.454 | 6.478   | -30.159316   |
| 120-28          | 120-27K | 180-00-12 | 122-56-00 | 8.44  | -4.590  | 7.086  | -108261.349 | -4051.368 | 20.752  | -95.253332   |
| 120-27K         | 120-26  | 179-59-43 | 122-55-43 | 6.07  | -3.301  | 5.097  | -108264.650 | -4046.271 | 32.935  | -108.719623  |
| 120-26          | 120-25  | 179-57-54 | 122-53-37 | 6.34  | -3.446  | 5.328  | -108268.096 | -4040.943 | 43.360  | -149.419801  |
| 120-25          | 120-24  | 180-02-27 | 122-56-04 | 6.30  | -3.430  | 5.295  | -108271.526 | -4035.648 | 53.983  | -185.162925  |
| 120-24          | 120-23  | 180-09-22 | 123-05-26 | 6.38  | -3.487  | 5.351  | -108275.013 | -4030.297 | 64.629  | -225.362578  |
| 120-23          | 120-22M | 179-51-57 | 122-57-23 | 6.34  | -3.453  | 5.326  | -108278.466 | -4024.971 | 75.306  | -260.032861  |
| 120-22M         | 120-21  | 179-59-47 | 122-57-10 | 6.37  | -3.470  | 5.353  | -108281.936 | -4019.618 | 85.985  | -298.369199  |
| 120-21          | 120-20  | 179-44-05 | 122-41-15 | 6.34  | -3.424  | 5.336  | -108285.360 | -4014.282 | 96.674  | -331.013009  |
| 120-20          | 120-19  | 180-14-44 | 122-55-59 | 6.33  | -3.446  | 5.320  | -108288.806 | -4008.962 | 107.330 | -369.860421  |
| 120-19          | 120-18  | 180-00-18 | 122-56-17 | 6.38  | -3.470  | 5.356  | -108292.276 | -4003.606 | 118.006 | -409.482069  |
| 120-18          | 120-17  | 180-03-49 | 123-00-06 | 7.31  | -3.985  | 6.136  | -108296.261 | -3997.470 | 129.498 | -516.050965  |
| 120-17          | 120-16  | 179-55-06 | 122-55-12 | 21.83 | -11.866 | 18.328 | -108308.127 | -3979.142 | 153.962 | -1826.917364 |
| 120-16          | 90-16   | 179-51-54 | 122-47-06 | 10.62 | -5.753  | 8.932  | -108313.880 | -3970.210 | 181.222 | -1042.572237 |
| 90-16           | 90-15B  | 180-05-34 | 122-52-40 | 5.89  | -3.198  | 4.948  | -108317.078 | -3965.262 | 195.102 | -623.975365  |
| 90-15B          | 90-15A  | 180-00-00 | 122-52-40 | 3.23  | -1.754  | 2.714  | -108318.832 | -3962.548 | 202.764 | -355.703272  |
| 90-15A          | 90-15   | 180-00-00 | 122-52-40 | 3.08  | -1.676  | 2.592  | -108320.508 | -3959.956 | 208.070 | -348.627973  |
| 90-15           | 90-14   | 178-10-44 | 121-03-24 | 1.05  | -0.545  | 0.905  | -108321.053 | -3959.051 | 211.567 | -115.304211  |
| 90-14           | 90-13   | 182-05-51 | 123-09-15 | 8.98  | -4.915  | 7.524  | -108325.968 | -3951.527 | 219.996 | -1081.282109 |
| 90-13           | 90-12   | 179-48-27 | 122-57-42 | 9.07  | -4.938  | 7.615  | -108330.906 | -3943.912 | 235.135 | -1161.098408 |
| 90-12           | 90-11   | 180-01-32 | 122-59-14 | 17.72 | -9.650  | 14.867 | -108340.556 | -3929.045 | 257.617 | -2486.007524 |
| 90-11           | 90-10   | 179-58-34 | 122-57-48 | 18.78 | -10.221 | 15.761 | -108350.777 | -3913.284 | 288.245 | -2946.155825 |
| 90-10           | 90-9    | 179-59-23 | 122-57-11 | 30.03 | -16.335 | 25.199 | -108367.112 | -3888.085 | 329.205 | -5377.569556 |
| 90-9            | K0-103  | 179-52-36 | 122-49-47 | 2.83  | -1.535  | 2.379  | -108368.647 | -3885.706 | 356.784 | -547.737722  |
| K0-103          | K0-104  | 90-54-39  | 33-44-26  | 17.99 | 14.962  | 9.994  | -108353.685 | -3875.712 | 369.157 | 5523.457076  |
| K0-104          | 130-63  | 89-12-54  | 302-57-20 | 2.88  | 1.568   | -2.418 | -108352.117 | -3878.130 | 376.733 | 590.666518   |

## 面積 (倍横距法) 計算書

| 器械点     | 視準点     | 内角        | 方向角       | 距離    | 緯距      | 経距      | X座標         | Y座標       | 倍横距     | 倍面積          |
|---------|---------|-----------|-----------|-------|---------|---------|-------------|-----------|---------|--------------|
| 130-63  | 130-12M | 179-59-32 | 302-56-52 | 17.66 | 9.605   | -14.820 | -108342.512 | -3892.950 | 359.494 | 3452.943328  |
| 130-12M | 130-11M | 180-00-05 | 302-56-57 | 14.07 | 7.654   | -11.809 | -108334.858 | -3904.759 | 332.865 | 2547.751465  |
| 130-11M | GE102   | 130-09-44 | 253-06-41 | 4.53  | -1.317  | -4.336  | -108336.175 | -3909.095 | 316.720 | -416.968629  |
| GE102   | GE101   | 142-32-21 | 215-39-02 | 2.00  | -1.627  | -1.167  | -108337.802 | -3910.262 | 311.217 | -506.366124  |
| GE101   | GEC24   | 267-17-35 | 302-56-37 | 13.00 | 7.070   | -10.910 | -108330.732 | -3921.172 | 299.140 | 2114.792621  |
| GEC24   | GE4UL   | 180-00-00 | 302-56-37 | 23.59 | 12.830  | -19.799 | -108317.902 | -3940.971 | 268.431 | 3443.974349  |
| GE4UL   | GE4ULL  | 90-00-55  | 212-57-32 | 1.00  | -0.839  | -0.544  | -108318.741 | -3941.515 | 248.088 | -208.146134  |
| GE4ULL  | GE4DLL  | 269-59-48 | 302-57-20 | 4.50  | 2.448   | -3.776  | -108316.293 | -3945.291 | 243.768 | 596.744945   |
| GE4DLL  | GE4DL   | 270-00-12 | 32-57-32  | 1.00  | 0.839   | 0.544   | -108315.454 | -3944.747 | 240.536 | 201.810006   |
| GE4DL   | GEC26   | 89-59-05  | 302-56-37 | 24.48 | 13.314  | -20.546 | -108302.140 | -3965.293 | 220.534 | 2936.194469  |
| GEC26   | GEC25   | 272-44-50 | 35-41-27  | 2.00  | 1.626   | 1.168   | -108300.514 | -3964.125 | 201.156 | 327.080241   |
| GEC25   | GE4DR   | 267-15-09 | 122-56-36 | 24.38 | -13.262 | 20.466  | -108313.776 | -3943.659 | 222.790 | -2954.645754 |
| GE4DR   | GE4DRR  | 90-00-56  | 32-57-32  | 1.00  | 0.839   | 0.544   | -108312.937 | -3943.115 | 243.800 | 204.548502   |
| GE4DRR  | GE4URR  | 269-59-48 | 122-57-20 | 4.50  | -2.448  | 3.776   | -108315.385 | -3939.339 | 248.120 | -607.398641  |
| GE4URR  | GE4UR   | 270-00-12 | 212-57-32 | 1.00  | -0.839  | -0.544  | -108316.224 | -3939.883 | 251.352 | -210.884630  |
| GE4UR   | GEC23   | 89-59-04  | 122-56-36 | 23.68 | -12.881 | 19.878  | -108329.105 | -3920.005 | 270.686 | -3486.711003 |
| GEC23   | GE102   | 180-00-00 | 122-56-36 | 13.00 | -7.070  | 10.910  | -108336.175 | -3909.095 | 301.474 | -2131.277301 |
| GE102   | 130-11M | 130-10-05 | 73-06-41  | 4.53  | 1.317   | 4.336   | -108334.858 | -3904.759 | 316.720 | 416.968629   |
| 130-11M | 130-10  | 49-50-22  | 302-57-03 | 13.86 | 7.543   | -11.637 | -108327.315 | -3916.396 | 309.419 | 2333.950232  |
| 130-10  | 130-9   | 180-00-00 | 302-57-03 | 18.61 | 10.124  | -15.619 | -108317.191 | -3932.015 | 282.163 | 2856.621857  |
| 130-9   | 130-8M  | 179-57-34 | 302-54-37 | 6.66  | 3.621   | -5.595  | -108313.570 | -3937.610 | 260.949 | 944.897633   |
| 130-8M  | 130-7   | 180-00-11 | 302-54-48 | 9.20  | 5.002   | -7.728  | -108308.568 | -3945.338 | 247.626 | 1238.627053  |
| 130-7   | 130-40M | 179-59-26 | 302-54-14 | 6.59  | 3.580   | -5.533  | -108304.988 | -3950.871 | 234.365 | 839.027989   |
| 130-40M | 130-6   | 179-59-42 | 302-53-56 | 4.03  | 2.193   | -3.390  | -108302.795 | -3954.261 | 225.442 | 494.395095   |
| 130-6   | 130-5   | 180-01-55 | 302-55-51 | 20.76 | 11.288  | -17.428 | -108291.507 | -3971.689 | 204.624 | 2309.799776  |
| 130-5   | 130-4   | 180-01-16 | 302-57-07 | 36.66 | 19.945  | -30.769 | -108271.562 | -4002.458 | 156.427 | 3119.943695  |
| 130-4   | 130-3Z  | 179-57-49 | 302-54-56 | 10.30 | 5.598   | -8.648  | -108265.964 | -4011.106 | 117.010 | 655.023995   |
| 130-3Z  | 130-2   | 179-59-50 | 302-54-46 | 44.73 | 24.306  | -37.553 | -108241.658 | -4048.659 | 70.809  | 1721.092304  |

面積 (倍横距法) 計算書

| 器械点    | 視準点    | 内角        | 方向角       | 距離    | 緯距      | 経距      | X座標         | Y座標       | 倍横距    | 倍面積         |
|--------|--------|-----------|-----------|-------|---------|---------|-------------|-----------|--------|-------------|
| 130-2  | 10K90L | 179-47-14 | 302-42-00 | 7.40  | 3.999   | -6.230  | -108237.659 | -4054.889 | 27.027 | 108.090130  |
| 10K90L | K7K    | 93-58-24  | 216-40-24 | 17.41 | -13.964 | -10.399 | -108251.623 | -4065.287 | 10.399 | -145.208023 |
| 合計     |        |           |           |       |         |         |             |           | 倍面積    | 7419.128754 |
|        |        |           |           |       |         |         |             |           | 面積     | 3709.56     |



面積 (倍横距法) 計算書

| 地番 = 2-2<br>器械点 | 視準点    | 内角        | 方向角       | 距離    | 緯距      | 経距      | X座標         | Y座標       | 倍横距     | 倍面積         |
|-----------------|--------|-----------|-----------|-------|---------|---------|-------------|-----------|---------|-------------|
| GEC26           | GE4DL  | 87-15-10  | 122-56-37 | 24.48 | -13.314 | 20.546  | -108315.454 | -3944.747 | 20.546  | -273.549444 |
| GE4DL           | GE4DLL | 270-00-55 | 212-57-32 | 1.00  | -0.839  | -0.544  | -108316.293 | -3945.291 | 40.548  | -34.019772  |
| GE4DLL          | GE4ULL | 89-59-48  | 122-57-20 | 4.50  | -2.448  | 3.776   | -108318.741 | -3941.515 | 43.780  | -107.173440 |
| GE4ULL          | GE4UL  | 90-00-12  | 32-57-32  | 1.00  | 0.839   | 0.544   | -108317.902 | -3940.971 | 48.100  | 40.355900   |
| GE4UL           | GEC24  | 269-59-05 | 122-56-37 | 23.59 | -12.830 | 19.799  | -108330.732 | -3921.172 | 68.443  | -878.123690 |
| GEC24           | GE101  | 180-00-00 | 122-56-37 | 13.00 | -7.070  | 10.910  | -108337.802 | -3910.262 | 99.152  | -700.960131 |
| GE101           | GE102  | 92-42-25  | 35-39-02  | 2.00  | 1.627   | 1.167   | -108336.175 | -3909.095 | 111.228 | 180.974482  |
| GE102           | GEC23  | 87-17-34  | 302-56-36 | 13.00 | 7.070   | -10.910 | -108329.105 | -3920.005 | 101.486 | 717.455391  |
| GEC23           | GE4UR  | 180-00-00 | 302-56-36 | 23.68 | 12.881  | -19.878 | -108316.224 | -3939.883 | 70.698  | 910.660938  |
| GE4UR           | GE4URR | 270-00-56 | 32-57-32  | 1.00  | 0.839   | 0.544   | -108315.385 | -3939.339 | 51.364  | 43.094396   |
| GE4URR          | GE4DRR | 89-59-48  | 302-57-20 | 4.50  | 2.448   | -3.776  | -108312.937 | -3943.115 | 48.132  | 117.827136  |
| GE4DRR          | GE4DR  | 90-00-12  | 212-57-32 | 1.00  | -0.839  | -0.544  | -108313.776 | -3943.659 | 43.812  | -36.758268  |
| GE4DR           | GEC25  | 269-59-04 | 302-56-36 | 24.38 | 13.262  | -20.466 | -108300.514 | -3964.125 | 22.802  | 302.400124  |
| GEC25           | GEC26  | 92-44-51  | 215-41-27 | 2.00  | -1.626  | -1.168  | -108302.140 | -3965.293 | 1.168   | -1.899168   |
| 合計              |        |           |           |       |         |         |             |           | 倍面積     | 280.284454  |
|                 |        |           |           |       |         |         |             |           | 面積      | 140.14      |

面積（倍横距法）計算書

| 地番 = 2-3<br>器械点 | 視準点     | 内角        | 方向角       | 距離    | 緯距      | 経距      | X座標         | Y座標       | 倍横距    | 倍面積         |
|-----------------|---------|-----------|-----------|-------|---------|---------|-------------|-----------|--------|-------------|
| 130-37          | 130-36  | 45-46-09  | 79-19-37  | 4.02  | 0.745   | 3.953   | -108218.301 | -4032.452 | 3.953  | 2.944985    |
| 130-36          | 130-35A | 226-41-00 | 126-00-37 | 11.56 | -6.797  | 9.351   | -108225.098 | -4023.101 | 17.257 | -117.296020 |
| 130-35A         | 130-35  | 180-00-00 | 126-00-37 | 10.65 | -6.261  | 8.615   | -108231.359 | -4014.486 | 35.223 | -220.540555 |
| 130-35          | 130-34K | 88-54-45  | 34-55-22  | 7.19  | 5.898   | 4.118   | -108225.461 | -4010.368 | 47.956 | 282.844488  |
| 130-34K         | 130-33  | 179-59-41 | 34-55-03  | 20.45 | 16.775  | 11.710  | -108208.686 | -3998.658 | 63.784 | 1069.976600 |
| 130-33          | 300-4A  | 89-37-23  | 304-32-26 | 5.11  | 2.898   | -4.211  | -108205.788 | -4002.869 | 71.283 | 206.603653  |
| 300-4A          | 300-4   | 90-00-00  | 214-32-26 | 6.76  | -5.573  | -3.836  | -108211.361 | -4006.705 | 63.236 | -352.437663 |
| 300-4           | 300-3   | 180-03-22 | 214-35-48 | 15.55 | -12.800 | -8.829  | -108224.161 | -4015.534 | 50.571 | -647.308800 |
| 300-3           | 300-2   | 271-24-13 | 306-00-01 | 17.43 | 10.248  | -14.105 | -108213.913 | -4029.639 | 27.637 | 283.223976  |
| 300-2           | 300-1   | 223-39-38 | 349-39-39 | 4.04  | 3.974   | -0.725  | -108209.939 | -4030.364 | 12.807 | 50.895018   |
| 300-1           | 130-37  | 43-53-49  | 213-33-28 | 10.92 | -9.107  | -6.041  | -108219.046 | -4036.405 | 6.041  | -55.015387  |
| 合計              |         |           |           |       |         |         |             |           | 倍面積    | 503.890295  |
|                 |         |           |           |       |         |         |             |           | 面積     | 251.94      |

面積 (倍横距法) 計算書

| 地番 = 2-4<br>器械点 | 視準点     | 内角        | 方向角       | 距離    | 緯距     | 経距     | X座標         | Y座標       | 倍横距    | 倍面積         |
|-----------------|---------|-----------|-----------|-------|--------|--------|-------------|-----------|--------|-------------|
| 130-33          | 130-32  | 45-52-56  | 80-29-32  | 3.51  | 0.581  | 3.469  | -108208.105 | -3995.189 | 3.469  | 2.015489    |
| 130-32          | 130-31M | 224-38-12 | 125-07-44 | 12.61 | -7.258 | 10.316 | -108215.363 | -3984.873 | 17.254 | -125.229532 |
| 130-31M         | 130-30  | 179-59-15 | 125-06-59 | 7.17  | -4.128 | 5.870  | -108219.491 | -3979.003 | 33.440 | -138.040320 |
| 130-30          | 130-29  | 224-45-21 | 169-52-20 | 3.99  | -3.930 | 0.702  | -108223.421 | -3978.301 | 40.012 | -157.247160 |
| 130-29          | 290-4   | 43-52-09  | 33-44-29  | 11.77 | 9.791  | 6.540  | -108213.630 | -3971.761 | 47.254 | 462.663914  |
| 290-4           | 290-3M  | 46-19-52  | 260-04-21 | 4.21  | -0.726 | -4.148 | -108214.356 | -3975.909 | 49.646 | -36.042996  |
| 290-3M          | 290-18  | 225-03-14 | 305-07-35 | 8.48  | 4.883  | -6.941 | -108209.473 | -3982.850 | 38.557 | 188.273831  |
| 290-18          | 290-2   | 179-55-43 | 305-03-18 | 10.94 | 6.286  | -8.959 | -108203.187 | -3991.809 | 22.657 | 142.421902  |
| 290-2           | 290-1   | 224-01-50 | 349-05-08 | 3.52  | 3.459  | -0.667 | -108199.728 | -3992.476 | 13.031 | 45.074229   |
| 290-1           | 130-33  | 45-31-28  | 214-36-36 | 10.88 | -8.958 | -6.182 | -108208.686 | -3998.658 | 6.182  | -55.378356  |
| 合計              |         |           |           |       |        |        |             |           | 倍面積    | 328.511001  |
|                 |         |           |           |       |        |        |             |           | 面積     | 164.25      |

## 面積 (倍横距法) 計算書

| 地番 = 2-5<br>器械点 | 視準点     | 内角        | 方向角       | 距離    | 緯距      | 経距      | X座標         | Y座標       | 倍横距      | 倍面積         |
|-----------------|---------|-----------|-----------|-------|---------|---------|-------------|-----------|----------|-------------|
| KOT142          | 290-7Z  | 92-18-09  | 213-42-50 | 7.89  | -6.564  | -4.380  | -108147.550 | -3927.647 | -4.380   | 28.751074   |
| 290-7Z          | 290-29  | 180-02-50 | 213-45-40 | 7.59  | -6.313  | -4.220  | -108153.863 | -3931.867 | -12.980  | 81.943115   |
| 290-29          | 290-6Z  | 179-56-55 | 213-42-35 | 5.67  | -4.723  | -3.151  | -108158.586 | -3935.018 | -20.351  | 96.118054   |
| 290-6Z          | 290-30M | 180-01-17 | 213-43-52 | 21.67 | -18.023 | -12.034 | -108176.609 | -3947.052 | -35.536  | 640.466399  |
| 290-30M         | 290-5   | 179-59-52 | 213-43-44 | 20.88 | -17.373 | -11.599 | -108193.982 | -3958.651 | -59.169  | 1027.944069 |
| 290-5           | 290-4   | 179-59-03 | 213-42-47 | 23.62 | -19.648 | -13.110 | -108213.630 | -3971.761 | -83.878  | 1648.036111 |
| 290-4           | 130-29  | 180-01-42 | 213-44-29 | 11.77 | -9.791  | -6.540  | -108223.421 | -3978.301 | -103.528 | 1013.643230 |
| 130-29          | 130-28Z | 180-02-32 | 213-47-01 | 20.20 | -16.796 | -11.237 | -108240.217 | -3989.538 | -121.305 | 2037.439778 |
| 130-28Z         | 130-27Z | 179-59-54 | 213-46-55 | 10.90 | -9.060  | -6.061  | -108249.277 | -3995.599 | -138.603 | 1255.743718 |
| 130-27Z         | 130-27  | 180-01-30 | 213-48-25 | 0.95  | -0.790  | -0.529  | -108250.067 | -3996.128 | -145.193 | 114.702517  |
| 130-27          | 130-25M | 89-16-10  | 123-04-35 | 6.16  | -3.364  | 5.165   | -108253.431 | -3990.963 | -140.557 | 472.833948  |
| 130-25M         | 130-24K | 179-51-39 | 122-56-14 | 36.74 | -19.979 | 30.839  | -108273.410 | -3960.124 | -104.553 | 2088.865574 |
| 130-24K         | 130-23  | 179-56-43 | 122-52-57 | 20.76 | -11.271 | 17.434  | -108284.681 | -3942.690 | -56.280  | 634.332549  |
| 130-23          | 130-41M | 180-05-09 | 122-58-06 | 4.16  | -2.265  | 3.492   | -108286.946 | -3939.198 | -35.354  | 80.076945   |
| 130-41M         | 130-22  | 180-00-45 | 122-58-51 | 6.40  | -3.488  | 5.375   | -108290.434 | -3933.823 | -26.487  | 92.386863   |
| 130-22          | 130-21M | 179-53-07 | 122-51-58 | 9.39  | -5.097  | 7.889   | -108295.531 | -3925.934 | -13.223  | 67.397934   |
| 130-21M         | 130-20  | 180-00-22 | 122-52-20 | 9.44  | -5.126  | 7.932   | -108300.657 | -3918.002 | 2.598    | -13.317044  |
| 130-20          | 130-19  | 180-11-02 | 123-03-22 | 15.64 | -8.532  | 13.110  | -108309.189 | -3904.892 | 23.640   | -201.695973 |
| 130-19          | 130-14M | 179-52-22 | 122-55-44 | 14.07 | -7.650  | 11.812  | -108316.839 | -3893.080 | 48.562   | -371.498846 |
| 130-14M         | 130-13M | 180-00-08 | 122-55-52 | 14.07 | -7.650  | 11.811  | -108324.489 | -3881.269 | 72.185   | -552.214796 |
| 130-13M         | 130-61  | 179-59-50 | 122-55-42 | 17.92 | -9.741  | 15.041  | -108334.230 | -3866.228 | 99.037   | -964.718838 |
| 130-61          | 130-60  | 224-22-40 | 167-18-22 | 4.02  | -3.929  | 0.885   | -108338.159 | -3865.343 | 114.963  | -451.689394 |
| 130-60          | 260-4   | 46-30-46  | 33-49-08  | 11.48 | 9.540   | 6.391   | -108328.619 | -3858.952 | 122.239  | 1166.159493 |
| 260-4           | 260-3   | 47-23-18  | 261-12-26 | 4.01  | -0.613  | -3.963  | -108329.232 | -3862.915 | 124.667  | -76.420835  |
| 260-3           | 260-2   | 221-37-40 | 302-50-06 | 45.05 | 24.428  | -37.854 | -108304.804 | -3900.769 | 82.850   | 2023.858349 |
| 260-2           | 270-4   | 180-35-25 | 303-25-31 | 11.58 | 6.383   | -9.671  | -108298.421 | -3910.440 | 35.325   | 225.479096  |
| 270-4           | 270-31M | 179-29-55 | 302-55-26 | 5.45  | 2.965   | -4.579  | -108295.456 | -3915.019 | 21.075   | 62.487199   |

面積 (倍横距法) 計算書

| 器械点      | 視準点      | 内角        | 方向角       | 距離    | 緯距     | 経距      | X座標         | Y座標       | 倍横距      | 倍面積          |
|----------|----------|-----------|-----------|-------|--------|---------|-------------|-----------|----------|--------------|
| 270-31M  | 270-3    | 180-00-18 | 302-55-44 | 12.77 | 6.946  | -10.725 | -108288.510 | -3925.744 | 5.771    | 40.084953    |
| 270-3    | 270-30MA | 179-51-36 | 302-47-20 | 11.12 | 6.026  | -9.355  | -108282.484 | -3935.099 | -14.309  | -86.230657   |
| 270-30MA | 270-2    | 180-00-07 | 302-47-27 | 8.43  | 4.566  | -7.087  | -108277.918 | -3942.186 | -30.751  | -140.399384  |
| 270-2    | 280-4    | 180-16-06 | 303-03-33 | 11.53 | 6.294  | -9.670  | -108271.624 | -3951.856 | -47.508  | -299.015726  |
| 280-4    | 280-13F  | 179-57-57 | 303-01-30 | 14.39 | 7.843  | -12.065 | -108263.781 | -3963.921 | -69.243  | -543.052757  |
| 280-13F  | 280-3    | 180-00-00 | 303-01-30 | 14.66 | 7.993  | -12.297 | -108255.788 | -3976.218 | -93.605  | -748.215625  |
| 280-3    | 280-2    | 179-45-49 | 302-47-19 | 10.87 | 5.891  | -9.145  | -108249.897 | -3985.363 | -115.047 | -677.742227  |
| 280-2    | 280-1    | 226-15-26 | 349-02-45 | 4.01  | 3.937  | -0.762  | -108245.960 | -3986.125 | -124.954 | -491.944132  |
| 280-1    | 280-11   | 224-37-18 | 33-40-03  | 7.07  | 5.888  | 3.922   | -108240.072 | -3982.203 | -121.794 | -717.123422  |
| 280-11   | 280-10A/ | 180-05-27 | 33-45-30  | 8.37  | 6.964  | 4.654   | -108233.108 | -3977.549 | -113.218 | -788.414759  |
| 280-10A/ | 280-10   | 180-00-00 | 33-45-30  | 8.38  | 6.974  | 4.662   | -108226.134 | -3972.887 | -103.902 | -724.639551  |
| 280-10   | 280-9    | 179-58-26 | 33-43-56  | 29.71 | 24.712 | 16.501  | -108201.422 | -3956.386 | -82.739  | -2044.647636 |
| 280-9    | 280-20A  | 179-59-21 | 33-43-17  | 34.00 | 28.280 | 18.876  | -108173.142 | -3937.510 | -47.362  | -1339.414800 |
| 280-20A  | 280-23A  | 179-59-42 | 33-42-59  | 3.10  | 2.580  | 1.721   | -108170.562 | -3935.789 | -26.765  | -69.040848   |
| 280-23A  | 280-12   | 180-00-20 | 33-43-19  | 31.79 | 26.444 | 17.651  | -108144.118 | -3918.138 | -7.393   | -195.498409  |
| 280-12   | KOT142   | 87-41-22  | 301-24-41 | 6.01  | 3.132  | -5.129  | -108140.986 | -3923.267 | 5.129    | 16.064590    |
| 合計       |          |           |           |       |        |         |             |           | 倍面積      | 3417.879899  |
|          |          |           |           |       |        |         |             |           | 面積       | 1708.93      |

面積 (倍横距法) 計算書

| 地番 = 2-6<br>器械点 | 視準点     | 内角       | 方向角       | 距離    | 緯距      | 経距      | X座標         | Y座標       | 倍横距    | 倍面積         |
|-----------------|---------|----------|-----------|-------|---------|---------|-------------|-----------|--------|-------------|
| 130-40M         | 130-7   | 90-00-05 | 122-54-14 | 6.59  | -3.580  | 5.533   | -108308.568 | -3945.338 | 5.533  | -19.808140  |
| 130-7           | 130-22  | 89-30-41 | 32-24-55  | 21.48 | 18.134  | 11.515  | -108290.434 | -3933.823 | 22.581 | 409.483854  |
| 130-22          | 130-41M | 90-33-56 | 302-58-51 | 6.40  | 3.488   | -5.375  | -108286.946 | -3939.198 | 28.721 | 100.178848  |
| 130-41M         | 130-40M | 89-55-18 | 212-54-09 | 21.48 | -18.042 | -11.673 | -108304.988 | -3950.871 | 11.673 | -210.604266 |
| 合計              |         |          |           |       |         |         |             |           | 倍面積    | 279.250296  |
|                 |         |          |           |       |         |         |             |           | 面積     | 139.62      |

面積 (倍横距法) 計算書

| 地番 = 2-7<br>器械点 | 視準点     | 内角       | 方向角       | 距離    | 緯距      | 経距      | X座標         | Y座標       | 倍横距    | 倍面積         |
|-----------------|---------|----------|-----------|-------|---------|---------|-------------|-----------|--------|-------------|
| 130-6           | 130-40M | 90-19-44 | 122-53-56 | 4.03  | -2.193  | 3.390   | -108304.988 | -3950.871 | 3.390  | -7.434270   |
| 130-40M         | 130-41M | 90-00-13 | 32-54-09  | 21.48 | 18.042  | 11.673  | -108286.946 | -3939.198 | 18.453 | 332.929026  |
| 130-41M         | 130-23  | 90-03-57 | 302-58-06 | 4.16  | 2.265   | -3.492  | -108284.681 | -3942.690 | 26.634 | 60.326010   |
| 130-23          | 130-6   | 89-36-06 | 212-34-12 | 21.49 | -18.114 | -11.571 | -108302.795 | -3954.261 | 11.571 | -209.597094 |
| 合計              |         |          |           |       |         |         |             |           | 倍面積    | 176.223672  |
|                 |         |          |           |       |         |         |             |           | 面積     | 88.11       |

面積 (倍横距法) 計算書

| 地番 = 2-8<br>器械点 | 視準点     | 内角       | 方向角       | 距離    | 緯距      | 経距      | X座標         | Y座標       | 倍横距     | 倍面積        |
|-----------------|---------|----------|-----------|-------|---------|---------|-------------|-----------|---------|------------|
| 130-24K         | 130-5   | 89-41-54 | 212-34-51 | 21.47 | -18.097 | -11.565 | -108291.507 | -3971.689 | -11.565 | 209.291805 |
| 130-5           | 130-6   | 90-21-00 | 122-55-51 | 20.76 | -11.288 | 17.428  | -108302.795 | -3954.261 | -5.702  | 64.364176  |
| 130-6           | 130-23  | 89-38-21 | 32-34-12  | 21.49 | 18.114  | 11.571  | -108284.681 | -3942.690 | 23.297  | 422.001858 |
| 130-23          | 130-24K | 90-18-45 | 302-52-57 | 20.76 | 11.271  | -17.434 | -108273.410 | -3960.124 | 17.434  | 196.498614 |
| 合計              |         |          |           |       |         |         |             |           | 倍面積     | 892.156453 |
|                 |         |          |           |       |         |         |             |           | 面積      | 446.07     |



面積（倍横距法）計算書

| 地番 = 2-9<br>器械点 | 視準点     | 内角       | 方向角       | 距離    | 緯距      | 經距      | X座標         | Y座標       | 倍横距     | 倍面積         |
|-----------------|---------|----------|-----------|-------|---------|---------|-------------|-----------|---------|-------------|
| 130-25M         | 130-4   | 89-26-14 | 212-22-28 | 21.46 | -18.131 | -11.495 | -108271.562 | -4002.458 | -11.495 | 208.415845  |
| 130-4           | 130-5   | 90-34-39 | 122-57-07 | 36.66 | -19.945 | 30.769  | -108291.507 | -3971.689 | 7.779   | -155.152155 |
| 130-5           | 130-24K | 89-37-44 | 32-34-51  | 21.47 | 18.097  | 11.565  | -108273.410 | -3960.124 | 50.113  | 906.894961  |
| 130-24K         | 130-25M | 90-21-23 | 302-56-14 | 36.74 | 19.979  | -30.839 | -108253.431 | -3990.963 | 30.839  | 616.132381  |
| 合計              |         |          |           |       |         |         |             |           | 倍面積     | 1576.291032 |
|                 |         |          |           |       |         |         |             |           | 面積      | 788.14      |

面積 (倍横距法) 計算書

| 地番 = 2-10<br>器械点 | 視準点     | 内角        | 方向角       | 距離    | 緯距      | 経距      | X座標         | Y座標       | 倍横距     | 倍面積        |
|------------------|---------|-----------|-----------|-------|---------|---------|-------------|-----------|---------|------------|
| 130-26Z          | 130-3Z  | 89-59-05  | 212-54-39 | 22.43 | -18.835 | -12.190 | -108265.964 | -4011.106 | -12.190 | 229.598650 |
| 130-3Z           | 130-4   | 90-00-17  | 122-54-56 | 10.30 | -5.598  | 8.648   | -108271.562 | -4002.458 | -15.732 | 88.067736  |
| 130-4            | 130-25M | 89-27-32  | 32-22-28  | 21.46 | 18.131  | 11.495  | -108253.431 | -3990.963 | 4.411   | 79.975841  |
| 130-25M          | 130-27  | 90-42-07  | 303-04-35 | 6.16  | 3.364   | -5.165  | -108250.067 | -3996.128 | 10.741  | 36.132724  |
| 130-27           | 130-27Z | 270-43-50 | 33-48-25  | 0.95  | 0.790   | 0.529   | -108249.277 | -3995.599 | 6.105   | 4.822950   |
| 130-27Z          | 130-26Z | 89-07-09  | 302-55-34 | 3.95  | 2.148   | -3.317  | -108247.129 | -3998.916 | 3.317   | 7.124916   |
| 合計               |         |           |           |       |         |         |             |           | 倍面積     | 445.722817 |
|                  |         |           |           |       |         |         |             |           | 面積      | 222.86     |

面積 (倍横距法) 計算書

| 地番 = 2-11<br>器械点 | 視準点     | 内角        | 方向角       | 距離    | 緯距      | 経距      | X座標         | Y座標       | 倍横距    | 倍面積         |
|------------------|---------|-----------|-----------|-------|---------|---------|-------------|-----------|--------|-------------|
| 130-1            | 130-2   | 134-53-47 | 168-27-48 | 3.22  | -3.155  | 0.644   | -108241.658 | -4048.659 | 0.644  | -2.031820   |
| 130-2            | 130-3Z  | 134-26-58 | 122-54-46 | 44.73 | -24.306 | 37.553  | -108265.964 | -4011.106 | 38.841 | -944.069346 |
| 130-3Z           | 130-26Z | 89-59-53  | 32-54-39  | 22.43 | 18.835  | 12.190  | -108247.129 | -3998.916 | 88.584 | 1668.479640 |
| 130-26Z          | 130-40Z | 90-00-56  | 302-55-35 | 18.25 | 9.921   | -15.320 | -108237.208 | -4014.236 | 85.454 | 847.789134  |
| 130-40Z          | 130-39  | 91-09-33  | 214-05-08 | 4.98  | -4.126  | -2.792  | -108241.334 | -4017.028 | 67.342 | -277.853092 |
| 130-39           | 130-38A | 270-48-02 | 304-53-10 | 14.46 | 8.271   | -11.862 | -108233.063 | -4028.890 | 52.688 | 435.762816  |
| 130-38A          | 130-38  | 180-00-02 | 304-53-12 | 14.00 | 8.010   | -11.488 | -108225.053 | -4040.378 | 29.338 | 235.012273  |
| 130-38           | 130-1   | 88-40-49  | 213-34-01 | 16.14 | -13.450 | -8.925  | -108238.503 | -4049.303 | 8.925  | -120.041250 |
| 合計               |         |           |           |       |         |         |             |           | 倍面積    | 1843.048355 |
|                  |         |           |           |       |         |         |             |           | 面積     | 921.52      |

面積 (倍横距法) 計算書

| 地番 = 2-12<br>器械点 | 視準点     | 内角        | 方向角       | 距離    | 緯距     | 経距     | X座標         | Y座標       | 倍横距     | 倍面積        |
|------------------|---------|-----------|-----------|-------|--------|--------|-------------|-----------|---------|------------|
| 130-35A          | 130-36  | 90-00-06  | 306-00-37 | 11.56 | 6.797  | -9.351 | -108218.301 | -4032.452 | -9.351  | -63.560357 |
| 130-36           | 130-37  | 133-19-00 | 259-19-37 | 4.02  | -0.745 | -3.953 | -108219.046 | -4036.405 | -22.656 | 16.878696  |
| 130-37           | 130-38  | 134-09-13 | 213-28-50 | 7.20  | -6.007 | -3.973 | -108225.053 | -4040.378 | -30.582 | 183.705881 |
| 130-38           | 130-38A | 91-24-22  | 124-53-12 | 14.00 | -8.010 | 11.488 | -108233.063 | -4028.890 | -23.067 | 184.773629 |
| 130-38A          | 130-35A | 91-07-19  | 36-00-31  | 9.84  | 7.966  | 5.789  | -108225.098 | -4023.101 | -5.789  | -46.114220 |
| 合計               |         |           |           |       |        |        |             |           | 倍面積     | 275.683629 |
|                  |         |           |           |       |        |        |             |           | 面積      | 137.84     |

面積 (倍横距法) 計算書

| 地番 = 2-13<br>器械点 | 視準点     | 内角        | 方向角       | 距離    | 緯距     | 経距     | X座標         | Y座標       | 倍横距    | 倍面積        |
|------------------|---------|-----------|-----------|-------|--------|--------|-------------|-----------|--------|------------|
| 130-38A          | 130-39  | 88-52-39  | 124-53-10 | 14.46 | -8.271 | 11.862 | -108241.334 | -4017.028 | 11.862 | -98.103000 |
| 130-39           | 130-40Z | 89-11-58  | 34-05-08  | 4.98  | 4.126  | 2.792  | -108237.208 | -4014.236 | 26.515 | 109.402425 |
| 130-40Z          | 130-45K | 180-00-36 | 34-05-44  | 4.58  | 3.798  | 2.571  | -108233.410 | -4011.665 | 31.878 | 121.074057 |
| 130-45K          | 130-35  | 91-55-24  | 306-01-08 | 3.48  | 2.051  | -2.821 | -108231.359 | -4014.486 | 31.628 | 64.869791  |
| 130-35           | 130-35A | 179-59-29 | 306-00-37 | 10.65 | 6.261  | -8.615 | -108225.098 | -4023.101 | 20.193 | 126.431095 |
| 130-35A          | 130-38A | 89-59-54  | 216-00-31 | 9.84  | -7.966 | -5.789 | -108233.063 | -4028.890 | 5.789  | -46.114220 |
| 合計               |         |           |           |       |        |        |             |           | 倍面積    | 277.560148 |
|                  |         |           |           |       |        |        |             |           | 面積     | 138.78     |

面積（倍横距法）計算書

| 地番 = 2-14<br>器械点 | 視準点     | 内角        | 方向角       | 距離    | 緯距     | 経距      | X座標         | Y座標       | 倍横距    | 倍面積         |
|------------------|---------|-----------|-----------|-------|--------|---------|-------------|-----------|--------|-------------|
| 130-35           | 130-45K | 91-05-46  | 126-01-08 | 3.48  | -2.051 | 2.821   | -108233.410 | -4011.665 | 2.821  | -5.785871   |
| 130-45K          | 130-40Z | 268-04-36 | 214-05-44 | 4.58  | -3.798 | -2.571  | -108237.208 | -4014.236 | 3.071  | -11.663658  |
| 130-40Z          | 130-26Z | 88-49-51  | 122-55-35 | 18.25 | -9.921 | 15.320  | -108247.129 | -3998.916 | 15.820 | -156.950220 |
| 130-26Z          | 130-27Z | 179-59-59 | 122-55-34 | 3.95  | -2.148 | 3.317   | -108249.277 | -3995.599 | 34.457 | -74.013636  |
| 130-27Z          | 130-28Z | 90-51-21  | 33-46-55  | 10.90 | 9.060  | 6.061   | -108240.217 | -3989.538 | 43.835 | 397.145100  |
| 130-28Z          | 130-17M | 91-32-00  | 305-18-55 | 10.48 | 6.060  | -8.554  | -108234.157 | -3998.092 | 41.342 | 250.532520  |
| 130-17M          | 130-34K | 179-59-51 | 305-18-46 | 15.04 | 8.696  | -12.276 | -108225.461 | -4010.368 | 20.512 | 178.372352  |
| 130-34K          | 130-35  | 89-36-36  | 214-55-22 | 7.19  | -5.898 | -4.118  | -108231.359 | -4014.486 | 4.118  | -24.287964  |
| 合計               |         |           |           |       |        |         |             |           | 倍面積    | 553.348623  |
|                  |         |           |           |       |        |         |             |           | 面積     | 276.67      |

面積 (倍横距法) 計算書

| 地番 = 2-15<br>器械点 | 視準点     | 内角        | 方向角       | 距離    | 緯距      | 経距      | X座標         | Y座標       | 倍横距     | 倍面積        |
|------------------|---------|-----------|-----------|-------|---------|---------|-------------|-----------|---------|------------|
| 130-17M          | 130-31M | 89-48-30  | 35-07-16  | 22.97 | 18.794  | 13.219  | -108215.363 | -3984.873 | 13.219  | 248.437886 |
| 130-31M          | 130-32  | 90-00-28  | 305-07-44 | 12.61 | 7.258   | -10.316 | -108208.105 | -3995.189 | 16.122  | 117.013476 |
| 130-32           | 130-33  | 135-21-48 | 260-29-32 | 3.51  | -0.581  | -3.469  | -108208.686 | -3998.658 | 2.337   | -1.357797  |
| 130-33           | 130-34K | 134-25-31 | 214-55-03 | 20.45 | -16.775 | -11.710 | -108225.461 | -4010.368 | -12.842 | 215.424550 |
| 130-34K          | 130-17M | 90-23-43  | 125-18-46 | 15.04 | -8.696  | 12.276  | -108234.157 | -3998.092 | -12.276 | 106.752096 |
| 合計               |         |           |           |       |         |         |             |           | 倍面積     | 686.270211 |
|                  |         |           |           |       |         |         |             |           | 面積      | 343.13     |

面積（倍横距法）計算書

| 地番 = 2-16<br>器械点 | 視準点     | 内角        | 方向角       | 距離    | 緯距      | 経距      | X座標         | Y座標       | 倍横距    | 倍面積        |
|------------------|---------|-----------|-----------|-------|---------|---------|-------------|-----------|--------|------------|
| 130-28Z          | 130-29  | 88-28-06  | 33-47-01  | 20.20 | 16.796  | 11.237  | -108223.421 | -3978.301 | 11.237 | 188.736652 |
| 130-29           | 130-30  | 136-05-19 | 349-52-20 | 3.99  | 3.930   | -0.702  | -108219.491 | -3979.003 | 21.772 | 85.563960  |
| 130-30           | 130-31M | 135-14-39 | 305-06-59 | 7.17  | 4.128   | -5.870  | -108215.363 | -3984.873 | 15.200 | 62.745600  |
| 130-31M          | 130-17M | 90-00-17  | 215-07-16 | 22.97 | -18.794 | -13.219 | -108234.157 | -3998.092 | -3.889 | 73.089866  |
| 130-17M          | 130-28Z | 90-11-39  | 125-18-55 | 10.48 | -6.060  | 8.554   | -108240.217 | -3989.538 | -8.554 | 51.837240  |
| 合計               |         |           |           |       |         |         |             |           | 倍面積    | 461.973318 |
|                  |         |           |           |       |         |         |             |           | 面積     | 230.98     |



面積 (倍横距法) 計算書

| 地番 = 7-1<br>器械点 | 視準点    | 内角        | 方向角       | 距離    | 緯距      | 経距      | X座標         | Y座標       | 倍横距     | 倍面積          |
|-----------------|--------|-----------|-----------|-------|---------|---------|-------------|-----------|---------|--------------|
| 10K90L          | 130-2  | 86-51-18  | 122-42-00 | 7.40  | -3.999  | 6.230   | -108241.658 | -4048.659 | 6.230   | -24.914724   |
| 130-2           | 130-1  | 45-45-48  | 348-27-48 | 3.22  | 3.155   | -0.644  | -108238.503 | -4049.303 | 11.815  | 37.277240    |
| 130-1           | 130-38 | 225-06-13 | 33-34-01  | 16.14 | 13.450  | 8.925   | -108225.053 | -4040.378 | 20.096  | 270.295101   |
| 130-38          | 130-37 | 179-54-49 | 33-28-50  | 7.20  | 6.007   | 3.973   | -108219.046 | -4036.405 | 32.994  | 198.196700   |
| 130-37          | 300-1  | 180-04-38 | 33-33-28  | 10.92 | 9.107   | 6.041   | -108209.939 | -4030.364 | 43.008  | 391.676497   |
| 300-1           | 300-19 | 179-53-41 | 33-27-09  | 12.63 | 10.545  | 6.967   | -108199.394 | -4023.397 | 56.016  | 590.691778   |
| 300-19          | 300-18 | 179-39-46 | 33-06-55  | 9.34  | 7.828   | 5.106   | -108191.566 | -4018.291 | 68.089  | 533.002962   |
| 300-18          | 300-17 | 180-29-17 | 33-36-12  | 14.84 | 12.366  | 8.217   | -108179.200 | -4010.074 | 81.412  | 1006.744378  |
| 300-17          | 300-16 | 179-49-05 | 33-25-17  | 21.29 | 17.772  | 11.728  | -108161.428 | -3998.346 | 101.357 | 1801.321758  |
| 300-16          | 300-15 | 180-03-54 | 33-29-11  | 15.60 | 13.018  | 8.612   | -108148.410 | -3989.734 | 121.697 | 1584.255321  |
| 300-15          | 300-14 | 180-01-08 | 33-30-19  | 27.34 | 22.797  | 15.092  | -108125.613 | -3974.642 | 145.401 | 3314.713208  |
| 300-14          | 300-13 | 180-02-13 | 33-32-32  | 6.33  | 5.281   | 3.501   | -108120.332 | -3971.141 | 163.994 | 866.053845   |
| 300-13          | KOT140 | 179-01-57 | 32-34-29  | 7.13  | 6.012   | 3.841   | -108114.320 | -3967.300 | 171.336 | 1030.010946  |
| KOT140          | KOT141 | 88-39-13  | 301-13-42 | 4.95  | 2.567   | -4.234  | -108111.754 | -3971.534 | 170.943 | 438.778528   |
| KOT141          | K.16   | 92-29-09  | 213-42-51 | 4.58  | -3.814  | -2.545  | -108115.568 | -3974.079 | 164.165 | -626.196561  |
| K.16            | 10K37K | 178-15-44 | 211-58-35 | 0.83  | -0.708  | -0.442  | -108116.276 | -3974.521 | 161.177 | -114.113521  |
| 10K37K          | K.15   | 179-58-06 | 211-56-41 | 4.49  | -3.817  | -2.380  | -108120.093 | -3976.901 | 158.355 | -604.442142  |
| K.15            | K.14   | 182-28-53 | 214-25-34 | 37.03 | -30.545 | -20.935 | -108150.638 | -3997.836 | 135.040 | -4124.805658 |
| K.14            | K.13   | 179-58-54 | 214-24-28 | 1.99  | -1.644  | -1.126  | -108152.282 | -3998.962 | 112.979 | -185.737953  |
| K.13            | K.12   | 179-04-55 | 213-29-23 | 18.00 | -15.019 | -9.937  | -108167.301 | -4008.899 | 101.916 | -1530.680760 |
| K.12            | K.11   | 178-45-05 | 212-14-28 | 27.01 | -22.851 | -14.413 | -108190.152 | -4023.312 | 77.566  | -1772.467293 |
| K.11            | K.10   | 180-08-50 | 212-23-18 | 22.96 | -19.392 | -12.301 | -108209.544 | -4035.613 | 50.852  | -986.127608  |
| K.10            | 10K55K | 185-33-31 | 217-56-49 | 0.48  | -0.386  | -0.301  | -108209.930 | -4035.914 | 38.250  | -14.764612   |
| 10K55K          | 10K56K | 180-00-42 | 217-57-31 | 1.20  | -0.946  | -0.738  | -108210.876 | -4036.652 | 37.211  | -35.201880   |
| 10K56K          | 10K56L | 87-53-11  | 125-50-42 | 0.90  | -0.528  | 0.730   | -108211.404 | -4035.922 | 37.204  | -19.629350   |
| 10K56L          | 10K90L | 270-00-00 | 215-50-42 | 32.38 | -26.255 | -18.967 | -108237.659 | -4054.889 | 18.967  | -497.978585  |

面積（倍横距法）計算書

合計

|     |             |
|-----|-------------|
| 倍面積 | 1525.957615 |
| 面積  | 762.97      |

面積（倍横距法）計算書

| 地番 = 7-2<br>器械点 | 視準点    | 内角        | 方向角       | 距離    | 緯距     | 経距      | X座標         | Y座標       | 倍横距    | 倍面積         |
|-----------------|--------|-----------|-----------|-------|--------|---------|-------------|-----------|--------|-------------|
| 300-13          | 300-12 | 43-56-16  | 76-30-45  | 3.01  | 0.703  | 2.931   | -108119.629 | -3968.210 | 2.931  | 2.060493    |
| 300-12          | 300-11 | 224-42-00 | 121-12-45 | 17.65 | -9.150 | 15.101  | -108128.779 | -3953.109 | 20.963 | -191.811450 |
| 300-11          | 300-10 | 227-01-15 | 168-14-00 | 4.01  | -3.927 | 0.818   | -108132.706 | -3952.291 | 36.882 | -144.835614 |
| 300-10          | 320-4A | 46-22-41  | 34-36-41  | 7.95  | 6.548  | 4.519   | -108126.158 | -3947.772 | 42.219 | 276.452108  |
| 320-4A          | 320-4  | 86-32-30  | 301-09-11 | 1.53  | 0.792  | -1.310  | -108125.366 | -3949.082 | 45.428 | 35.977607   |
| 320-4           | 320-3  | 180-04-31 | 301-13-42 | 19.04 | 9.876  | -16.289 | -108115.490 | -3965.371 | 27.829 | 274.839204  |
| 320-3           | KOT140 | 180-00-00 | 301-13-42 | 2.25  | 1.170  | -1.929  | -108114.320 | -3967.300 | 9.611  | 11.241225   |
| KOT140          | 300-13 | 91-20-47  | 212-34-29 | 7.13  | -6.012 | -3.841  | -108120.332 | -3971.141 | 3.841  | -23.089829  |
| 合計              |        |           |           |       |        |         |             |           | 倍面積    | 240.833744  |
|                 |        |           |           |       |        |         |             |           | 面積     | 120.41      |

面積 (倍横距法) 計算書

| 地番 = 7-3<br>器械点 | 視準点    | 内角        | 方向角       | 距離    | 緯距      | 経距      | X座標         | Y座標       | 倍横距    | 倍面積         |
|-----------------|--------|-----------|-----------|-------|---------|---------|-------------|-----------|--------|-------------|
| 300-1           | 300-2  | 136-12-30 | 169-39-39 | 4.04  | -3.974  | 0.725   | -108213.913 | -4029.639 | 0.725  | -2.881150   |
| 300-2           | 300-3  | 136-20-22 | 126-00-01 | 17.43 | -10.248 | 14.105  | -108224.161 | -4015.534 | 15.555 | -159.407640 |
| 300-3           | 300-4  | 88-35-47  | 34-35-48  | 15.55 | 12.800  | 8.829   | -108211.361 | -4006.705 | 38.489 | 492.659200  |
| 300-4           | 300-19 | 91-02-28  | 305-38-16 | 20.53 | 11.967  | -16.692 | -108199.394 | -4023.397 | 30.626 | 366.501342  |
| 300-19          | 300-1  | 87-48-53  | 213-27-09 | 12.63 | -10.545 | -6.967  | -108209.939 | -4030.364 | 6.967  | -73.467015  |
| 合計              |        |           |           |       |         |         |             |           | 倍面積    | 623.404737  |
|                 |        |           |           |       |         |         |             |           | 面積     | 311.70      |

面積（倍横距法）計算書

| 地番 = 7-4<br>器械点 | 視準点    | 内角        | 方向角       | 距離    | 緯距      | 経距      | X座標         | Y座標       | 倍横距    | 倍面積         |
|-----------------|--------|-----------|-----------|-------|---------|---------|-------------|-----------|--------|-------------|
| 300-19          | 300-4  | 92-31-21  | 125-38-16 | 20.53 | -11.967 | 16.692  | -108211.361 | -4006.705 | 16.692 | -199.753164 |
| 300-4           | 300-4A | 88-54-10  | 34-32-26  | 6.76  | 5.573   | 3.836   | -108205.788 | -4002.869 | 37.220 | 207.441463  |
| 300-4A          | 300-5  | 180-00-00 | 34-32-26  | 2.63  | 2.169   | 1.493   | -108203.619 | -4001.376 | 42.549 | 92.274584   |
| 300-5           | 300-18 | 90-55-54  | 305-28-20 | 20.77 | 12.053  | -16.915 | -108191.566 | -4018.291 | 27.127 | 326.961731  |
| 300-18          | 300-19 | 87-38-35  | 213-06-55 | 9.34  | -7.828  | -5.106  | -108199.394 | -4023.397 | 5.106  | -39.969768  |
| 合計              |        |           |           |       |         |         |             |           | 倍面積    | 386.954846  |
|                 |        |           |           |       |         |         |             |           | 面積     | 193.47      |

面積 (倍横距法) 計算書

| 地番 = 7-5<br>器械点 | 視準点    | 内角       | 方向角       | 距離    | 緯距      | 経距      | X座標         | Y座標       | 倍横距    | 倍面積         |
|-----------------|--------|----------|-----------|-------|---------|---------|-------------|-----------|--------|-------------|
| 300-18          | 300-5  | 91-52-08 | 125-28-20 | 20.77 | -12.053 | 16.915  | -108203.619 | -4001.376 | 16.915 | -203.876495 |
| 300-5           | 300-6M | 89-25-34 | 34-53-54  | 15.36 | 12.601  | 8.790   | -108191.018 | -3992.586 | 42.620 | 537.054620  |
| 300-6M          | 300-17 | 89-09-06 | 304-03-00 | 21.10 | 11.818  | -17.488 | -108179.200 | -4010.074 | 33.922 | 400.890196  |
| 300-17          | 300-18 | 89-33-12 | 213-36-12 | 14.84 | -12.366 | -8.217  | -108191.566 | -4018.291 | 8.217  | -101.611422 |
| 合計              |        |          |           |       |         |         |             |           | 倍面積    | 632.456899  |
|                 |        |          |           |       |         |         |             |           | 面積     | 316.22      |

面積 (倍横距法) 計算書

| 地番 = 7-6<br>器械点 | 視準点    | 内角       | 方向角       | 距離    | 緯距      | 経距      | X座標         | Y座標       | 倍横距    | 倍面積         |
|-----------------|--------|----------|-----------|-------|---------|---------|-------------|-----------|--------|-------------|
| 300-17          | 300-6M | 90-37-43 | 124-03-00 | 21.10 | -11.818 | 17.488  | -108191.018 | -3992.586 | 17.488 | -206.673184 |
| 300-6M          | 300-7M | 90-13-04 | 34-16-04  | 21.18 | 17.504  | 11.926  | -108173.514 | -3980.660 | 46.902 | 820.972608  |
| 300-7M          | 300-16 | 90-04-46 | 304-20-50 | 21.42 | 12.086  | -17.686 | -108161.428 | -3998.346 | 41.142 | 497.242212  |
| 300-16          | 300-17 | 89-04-27 | 213-25-17 | 21.29 | -17.772 | -11.728 | -108179.200 | -4010.074 | 11.728 | -208.430016 |
| 合計              |        |          |           |       |         |         |             |           | 倍面積    | 903.111620  |
|                 |        |          |           |       |         |         |             |           | 面積     | 451.55      |

面積（倍横距法）計算書

| 地番 = 7-7<br>器械点 | 視準点    | 内角       | 方向角       | 距離    | 緯距      | 経距      | X座標         | Y座標       | 倍横距    | 倍面積         |
|-----------------|--------|----------|-----------|-------|---------|---------|-------------|-----------|--------|-------------|
| 300-16          | 300-7M | 90-51-39 | 124-20-50 | 21.42 | -12.086 | 17.686  | -108173.514 | -3980.660 | 17.686 | -213.752996 |
| 300-7M          | 300-8M | 90-00-46 | 34-21-36  | 15.20 | 12.554  | 8.583   | -108160.960 | -3972.077 | 43.955 | 551.811070  |
| 300-8M          | 300-15 | 91-02-38 | 305-24-14 | 21.66 | 12.550  | -17.657 | -108148.410 | -3989.734 | 34.881 | 437.756550  |
| 300-15          | 300-16 | 88-04-57 | 213-29-11 | 15.60 | -13.018 | -8.612  | -108161.428 | -3998.346 | 8.612  | -112.111016 |
| 合計              |        |          |           |       |         |         |             |           | 倍面積    | 663.703608  |
|                 |        |          |           |       |         |         |             |           | 面積     | 331.85      |



面積 (倍横距法) 計算書

| 地番 = 7-8<br>器械点 | 視準点     | 内角        | 方向角       | 距離    | 緯距      | 経距      | X座標         | Y座標       | 倍横距    | 倍面積         |
|-----------------|---------|-----------|-----------|-------|---------|---------|-------------|-----------|--------|-------------|
| 300-15          | 300-8M  | 91-53-55  | 125-24-14 | 21.66 | -12.550 | 17.657  | -108160.960 | -3972.077 | 17.657 | -221.595350 |
| 300-8M          | 300-8KM | 180-06-20 | 125-30-34 | 0.23  | -0.137  | 0.192   | -108161.097 | -3971.885 | 35.506 | -4.864322   |
| 300-8KM         | 300-9   | 89-04-55  | 34-35-29  | 27.60 | 22.728  | 15.674  | -108138.369 | -3956.211 | 51.372 | 1167.582816 |
| 300-9           | 300-14  | 90-05-44  | 304-41-13 | 22.41 | 12.756  | -18.431 | -108125.613 | -3974.642 | 48.615 | 620.132940  |
| 300-14          | 300-15  | 88-49-06  | 213-30-19 | 27.34 | -22.797 | -15.092 | -108148.410 | -3989.734 | 15.092 | -344.052324 |
| 合計              |         |           |           |       |         |         |             |           | 倍面積    | 1217.203760 |
|                 |         |           |           |       |         |         |             |           | 面積     | 608.60      |

面積 (倍横距法) 計算書

| 地番 = 7-9<br>器械点 | 視準点    | 内角        | 方向角       | 距離    | 緯距      | 経距      | X座標         | Y座標       | 倍横距    | 倍面積         |
|-----------------|--------|-----------|-----------|-------|---------|---------|-------------|-----------|--------|-------------|
| 300-14          | 300-9  | 91-08-41  | 124-41-13 | 22.41 | -12.756 | 18.431  | -108138.369 | -3956.211 | 18.431 | -235.105836 |
| 300-9           | 300-10 | 90-00-16  | 34-41-29  | 6.88  | 5.663   | 3.920   | -108132.706 | -3952.291 | 40.782 | 230.948466  |
| 300-10          | 300-11 | 133-32-31 | 348-14-00 | 4.01  | 3.927   | -0.818  | -108128.779 | -3953.109 | 43.884 | 172.332468  |
| 300-11          | 300-12 | 132-58-45 | 301-12-45 | 17.65 | 9.150   | -15.101 | -108119.629 | -3968.210 | 27.965 | 255.879750  |
| 300-12          | 300-13 | 135-18-00 | 256-30-45 | 3.01  | -0.703  | -2.931  | -108120.332 | -3971.141 | 9.933  | -6.982899   |
| 300-13          | 300-14 | 137-01-47 | 213-32-32 | 6.33  | -5.281  | -3.501  | -108125.613 | -3974.642 | 3.501  | -18.488781  |
| 合計              |        |           |           |       |         |         |             |           | 倍面積    | 398.583168  |
|                 |        |           |           |       |         |         |             |           | 面積     | 199.29      |

面積 (倍横距法) 計算書

| 地番 = 8-1<br>器械点 | 視準点      | 内角        | 方向角       | 距離    | 緯距      | 経距      | X座標         | Y座標       | 倍横距     | 倍面積          |
|-----------------|----------|-----------|-----------|-------|---------|---------|-------------|-----------|---------|--------------|
| 300-5           | 300-4A   | 179-38-32 | 214-32-26 | 2.63  | -2.169  | -1.493  | -108205.788 | -4002.869 | -1.493  | 3.237223     |
| 300-4A          | 130-33   | 90-00-00  | 124-32-26 | 5.11  | -2.898  | 4.211   | -108208.686 | -3998.658 | 1.225   | -3.551245    |
| 130-33          | 290-1    | 90-04-10  | 34-36-36  | 10.88 | 8.958   | 6.182   | -108199.728 | -3992.476 | 11.618  | 104.074044   |
| 290-1           | 290-17   | 180-36-38 | 35-13-14  | 7.49  | 6.125   | 4.324   | -108193.603 | -3988.152 | 22.124  | 135.509500   |
| 290-17          | 290-16   | 179-16-22 | 34-29-36  | 10.03 | 8.268   | 5.681   | -108185.335 | -3982.471 | 32.129  | 265.642572   |
| 290-16          | 290-15   | 179-54-02 | 34-23-38  | 9.98  | 8.236   | 5.638   | -108177.099 | -3976.833 | 43.448  | 357.837728   |
| 290-15          | 290-14   | 180-09-51 | 34-33-29  | 10.05 | 8.277   | 5.701   | -108168.822 | -3971.132 | 54.787  | 453.471999   |
| 290-14          | 290-13   | 179-58-41 | 34-32-10  | 10.03 | 8.262   | 5.686   | -108160.560 | -3965.446 | 66.174  | 546.729588   |
| 290-13          | 290-12KK | 179-55-21 | 34-27-31  | 10.09 | 8.324   | 5.712   | -108152.236 | -3959.734 | 77.572  | 645.673859   |
| 290-12KK        | 290-11K  | 180-12-19 | 34-39-50  | 16.29 | 13.404  | 9.269   | -108138.832 | -3950.465 | 92.553  | 1240.617786  |
| 290-11K         | 290-10   | 179-59-29 | 34-39-19  | 4.52  | 3.725   | 2.575   | -108135.107 | -3947.890 | 104.397 | 388.878825   |
| 290-10          | 290-9    | 223-48-57 | 78-28-16  | 4.00  | 0.800   | 3.922   | -108134.307 | -3943.968 | 110.894 | 88.715200    |
| 290-9           | 290-28   | 222-37-05 | 121-05-21 | 10.80 | -5.580  | 9.254   | -108139.887 | -3934.714 | 124.070 | -692.310600  |
| 290-28          | 290-8Z   | 180-01-14 | 121-06-35 | 7.27  | -3.759  | 6.229   | -108143.646 | -3928.485 | 139.553 | -524.579727  |
| 290-8Z          | 290-7Z   | 226-46-32 | 167-53-07 | 3.99  | -3.904  | 0.838   | -108147.550 | -3927.647 | 146.620 | -572.404480  |
| 290-7Z          | KOT142   | 45-49-43  | 33-42-50  | 7.89  | 6.564   | 4.380   | -108140.986 | -3923.267 | 151.838 | 996.684217   |
| KOT142          | 320-5    | 87-41-51  | 301-24-41 | 2.77  | 1.445   | -2.366  | -108139.541 | -3925.633 | 153.852 | 222.296536   |
| 320-5           | 320-4A   | 179-44-30 | 301-09-11 | 25.87 | 13.383  | -22.139 | -108126.158 | -3947.772 | 129.347 | 1731.056568  |
| 320-4A          | 300-10   | 93-27-30  | 214-36-41 | 7.95  | -6.548  | -4.519  | -108132.706 | -3952.291 | 102.689 | -672.411610  |
| 300-10          | 300-9    | 180-04-48 | 214-41-29 | 6.88  | -5.663  | -3.920  | -108138.369 | -3956.211 | 94.250  | -533.737750  |
| 300-9           | 300-8KM  | 179-54-00 | 214-35-29 | 27.60 | -22.728 | -15.674 | -108161.097 | -3971.885 | 74.656  | -1696.781568 |
| 300-8KM         | 300-8M   | 270-55-05 | 305-30-34 | 0.23  | 0.137   | -0.192  | -108160.960 | -3972.077 | 58.790  | 8.054230     |
| 300-8M          | 300-7M   | 88-51-02  | 214-21-36 | 15.20 | -12.554 | -8.583  | -108173.514 | -3980.660 | 50.015  | -627.888310  |
| 300-7M          | 300-6M   | 179-54-28 | 214-16-04 | 21.18 | -17.504 | -11.926 | -108191.018 | -3992.586 | 29.506  | -516.473024  |
| 300-6M          | 300-5    | 180-37-50 | 214-53-54 | 15.36 | -12.601 | -8.790  | -108203.619 | -4001.376 | 8.790   | -110.762790  |

面積（倍横距法）計算書

合計

|     |             |
|-----|-------------|
| 倍面積 | 1237.578771 |
| 面積  | 618.78      |

面積 (倍横距法) 計算書

| 地番 = 8-2<br>器械点 | 視準点    | 内角        | 方向角       | 距離    | 緯距     | 経距      | X座標         | Y座標       | 倍横距    | 倍面積        |
|-----------------|--------|-----------|-----------|-------|--------|---------|-------------|-----------|--------|------------|
| 290-1           | 290-2  | 133-51-54 | 169-05-08 | 3.52  | -3.459 | 0.667   | -108203.187 | -3991.809 | 0.667  | -2.307153  |
| 290-2           | 290-18 | 135-58-10 | 125-03-18 | 10.94 | -6.286 | 8.959   | -108209.473 | -3982.850 | 10.293 | -64.701798 |
| 290-18          | 290-19 | 89-40-41  | 34-43-59  | 10.05 | 8.265  | 5.730   | -108201.208 | -3977.120 | 24.982 | 206.476230 |
| 290-19          | 290-17 | 89-50-52  | 304-34-51 | 13.39 | 7.605  | -11.032 | -108193.603 | -3988.152 | 19.680 | 149.666400 |
| 290-17          | 290-1  | 90-38-23  | 215-13-14 | 7.49  | -6.125 | -4.324  | -108199.728 | -3992.476 | 4.324  | -26.484500 |
| 合計              |        |           |           |       |        |         |             |           | 倍面積    | 262.649179 |
|                 |        |           |           |       |        |         |             |           | 面積     | 131.32     |

面積 (倍横距法) 計算書

| 地番 = 8-3<br>器械点 | 視準点    | 内角       | 方向角       | 距離    | 緯距     | 経距      | X座標         | Y座標       | 倍横距    | 倍面積        |
|-----------------|--------|----------|-----------|-------|--------|---------|-------------|-----------|--------|------------|
| 290-17          | 290-19 | 90-05-15 | 124-34-51 | 13.39 | -7.605 | 11.032  | -108201.208 | -3977.120 | 11.032 | -83.898360 |
| 290-19          | 290-20 | 90-07-24 | 34-42-15  | 10.01 | 8.232  | 5.701   | -108192.976 | -3971.419 | 27.765 | 228.561480 |
| 290-20          | 290-16 | 89-57-16 | 304-39-31 | 13.43 | 7.641  | -11.052 | -108185.335 | -3982.471 | 22.414 | 171.265374 |
| 290-16          | 290-17 | 89-50-05 | 214-29-36 | 10.03 | -8.268 | -5.681  | -108193.603 | -3988.152 | 5.681  | -46.970508 |
| 合計              |        |          |           |       |        |         |             |           | 倍面積    | 268.957986 |
|                 |        |          |           |       |        |         |             |           | 面積     | 134.47     |

面積 (倍横距法) 計算書

| 地番 = 8-4<br>器械点 | 視準点     | 内角        | 方向角       | 距離    | 緯距     | 経距      | X座標         | Y座標       | 倍横距    | 倍面積        |
|-----------------|---------|-----------|-----------|-------|--------|---------|-------------|-----------|--------|------------|
| 290-16          | 290-20  | 90-15-53  | 124-39-31 | 13.43 | -7.641 | 11.052  | -108192.976 | -3971.419 | 11.052 | -84.448332 |
| 290-20          | 290-21Z | 90-06-57  | 34-46-28  | 6.17  | 5.068  | 3.519   | -108187.908 | -3967.900 | 25.623 | 129.857364 |
| 290-21Z         | 290-22  | 179-59-33 | 34-46-01  | 3.83  | 3.152  | 2.188   | -108184.756 | -3965.712 | 31.330 | 98.752160  |
| 290-22          | 290-15  | 89-46-52  | 304-32-53 | 13.50 | 7.657  | -11.121 | -108177.099 | -3976.833 | 22.397 | 171.493829 |
| 290-15          | 290-16  | 89-50-45  | 214-23-38 | 9.98  | -8.236 | -5.638  | -108185.335 | -3982.471 | 5.638  | -46.434568 |
| 合計              |         |           |           |       |        |         |             |           | 倍面積    | 269.220453 |
|                 |         |           |           |       |        |         |             |           | 面積     | 134.61     |

面積 (倍横距法) 計算書

| 地番 = 8-5<br>器械点 | 視準点    | 内角       | 方向角       | 距離    | 緯距     | 経距      | X座標         | Y座標       | 倍横距    | 倍面積        |
|-----------------|--------|----------|-----------|-------|--------|---------|-------------|-----------|--------|------------|
| 290-15          | 290-22 | 89-59-24 | 124-32-53 | 13.50 | -7.657 | 11.121  | -108184.756 | -3965.712 | 11.121 | -85.153497 |
| 290-22          | 290-23 | 90-12-22 | 34-45-15  | 10.02 | 8.234  | 5.713   | -108176.522 | -3959.999 | 27.955 | 230.181470 |
| 290-23          | 290-14 | 89-54-54 | 304-40-09 | 13.53 | 7.700  | -11.133 | -108168.822 | -3971.132 | 22.535 | 173.519500 |
| 290-14          | 290-15 | 89-53-20 | 214-33-29 | 10.05 | -8.277 | -5.701  | -108177.099 | -3976.833 | 5.701  | -47.187177 |
| 合計              |        |          |           |       |        |         |             |           | 倍面積    | 271.360296 |
|                 |        |          |           |       |        |         |             |           | 面積     | 135.68     |



面積（倍横距法）計算書

| 地番 = 8-6<br>器械点 | 視準点      | 内角        | 方向角       | 距離    | 緯距     | 経距      | X座標         | Y座標       | 倍横距    | 倍面積        |
|-----------------|----------|-----------|-----------|-------|--------|---------|-------------|-----------|--------|------------|
| 290-14          | 290-23   | 90-07-59  | 124-40-09 | 13.53 | -7.700 | 11.133  | -108176.522 | -3959.999 | 11.133 | -85.724100 |
| 290-23          | 290-31M  | 90-04-37  | 34-44-46  | 7.11  | 5.849  | 4.057   | -108170.673 | -3955.942 | 26.323 | 153.963227 |
| 290-31M         | 290-24KK | 179-59-58 | 34-44-44  | 2.90  | 2.384  | 1.654   | -108168.289 | -3954.288 | 32.034 | 76.365162  |
| 290-24KK        | 290-13   | 89-57-57  | 304-42-41 | 13.57 | 7.729  | -11.158 | -108160.560 | -3965.446 | 22.530 | 174.132437 |
| 290-13          | 290-14   | 89-49-29  | 214-32-10 | 10.03 | -8.262 | -5.686  | -108168.822 | -3971.132 | 5.686  | -46.977732 |
| 合計              |          |           |           |       |        |         |             |           | 倍面積    | 271.758994 |
|                 |          |           |           |       |        |         |             |           | 面積     | 135.87     |

面積 (倍横距法) 計算書

| 地番 = 8-7<br>器械点 | 視準点      | 内角       | 方向角       | 距離    | 緯距     | 経距      | X座標         | Y座標       | 倍横距    | 倍面積        |
|-----------------|----------|----------|-----------|-------|--------|---------|-------------|-----------|--------|------------|
| 290-13          | 290-24KK | 90-15-10 | 124-42-41 | 13.57 | -7.729 | 11.158  | -108168.289 | -3954.288 | 11.158 | -86.237287 |
| 290-24KK        | 290-25L  | 89-57-38 | 34-40-19  | 10.06 | 8.281  | 5.728   | -108160.008 | -3948.561 | 28.043 | 232.211300 |
| 290-25L         | 290-12KK | 90-08-59 | 304-49-18 | 13.61 | 7.772  | -11.173 | -108152.236 | -3959.734 | 22.597 | 175.625241 |
| 290-12KK        | 290-13   | 89-38-13 | 214-27-31 | 10.09 | -8.324 | -5.712  | -108160.560 | -3965.446 | 5.712  | -47.542442 |
| 合計              |          |          |           |       |        |         |             |           | 倍面積    | 274.056812 |
|                 |          |          |           |       |        |         |             |           | 面積     | 137.02     |

面積（倍横距法）計算書

| 地番 = 8-8<br>器械点 | 視準点      | 内角        | 方向角       | 距離    | 緯距      | 経距      | X座標         | Y座標       | 倍横距    | 倍面積         |
|-----------------|----------|-----------|-----------|-------|---------|---------|-------------|-----------|--------|-------------|
| 290-12KK        | 290-25L  | 90-09-28  | 124-49-18 | 13.61 | -7.772  | 11.173  | -108160.008 | -3948.561 | 11.173 | -86.840756  |
| 290-25L         | 290-26Z  | 89-59-21  | 34-48-39  | 8.70  | 7.150   | 4.972   | -108152.858 | -3943.589 | 27.319 | 195.341622  |
| 290-26Z         | 290-27   | 179-35-33 | 34-24-12  | 7.88  | 6.507   | 4.456   | -108146.351 | -3939.133 | 36.746 | 239.108980  |
| 290-27          | 290-11K  | 89-09-42  | 303-33-54 | 13.60 | 7.519   | -11.332 | -108138.832 | -3950.465 | 29.870 | 224.595717  |
| 290-11K         | 290-12KK | 91-05-56  | 214-39-50 | 16.29 | -13.404 | -9.269  | -108152.236 | -3959.734 | 9.269  | -124.248544 |
| 合計              |          |           |           |       |         |         |             |           | 倍面積    | 447.957019  |
|                 |          |           |           |       |         |         |             |           | 面積     | 223.97      |

面積（倍横距法）計算書

| 地番 = 8-9<br>器械点 | 視準点     | 内角        | 方向角       | 距離    | 緯距     | 経距     | X座標         | Y座標       | 倍横距    | 倍面積        |
|-----------------|---------|-----------|-----------|-------|--------|--------|-------------|-----------|--------|------------|
| 290-11K         | 290-27  | 88-54-35  | 123-33-54 | 13.60 | -7.519 | 11.332 | -108146.351 | -3939.133 | 11.332 | -85.205308 |
| 290-27          | 290-28  | 90-47-34  | 34-21-28  | 7.83  | 6.464  | 4.419  | -108139.887 | -3934.714 | 27.083 | 175.064512 |
| 290-28          | 290-9   | 86-43-53  | 301-05-21 | 10.80 | 5.580  | -9.254 | -108134.307 | -3943.968 | 22.248 | 124.143840 |
| 290-9           | 290-10  | 137-22-55 | 258-28-16 | 4.00  | -0.800 | -3.922 | -108135.107 | -3947.890 | 9.072  | -7.257600  |
| 290-10          | 290-11K | 136-11-03 | 214-39-19 | 4.52  | -3.725 | -2.575 | -108138.832 | -3950.465 | 2.575  | -9.591875  |
| 合計              |         |           |           |       |        |        |             |           | 倍面積    | 197.153569 |
|                 |         |           |           |       |        |        |             |           | 面積     | 98.57      |

面積（倍横距法）計算書

| 地番 = 8-10<br>器械点 | 視準点     | 内角        | 方向角       | 距離    | 緯距     | 経距     | X座標         | Y座標       | 倍横距    | 倍面積        |
|------------------|---------|-----------|-----------|-------|--------|--------|-------------|-----------|--------|------------|
| 290-26Z          | 290-6Z  | 89-21-05  | 123-45-17 | 10.30 | -5.728 | 8.571  | -108158.586 | -3935.018 | 8.571  | -49.094688 |
| 290-6Z           | 290-29  | 89-57-18  | 33-42-35  | 5.67  | 4.723  | 3.151  | -108153.863 | -3931.867 | 20.293 | 95.843839  |
| 290-29           | 290-7Z  | 180-03-05 | 33-45-40  | 7.59  | 6.313  | 4.220  | -108147.550 | -3927.647 | 27.664 | 174.642832 |
| 290-7Z           | 290-8Z  | 134-07-27 | 347-53-07 | 3.99  | 3.904  | -0.838 | -108143.646 | -3928.485 | 31.046 | 121.203584 |
| 290-8Z           | 290-28  | 133-13-28 | 301-06-35 | 7.27  | 3.759  | -6.229 | -108139.887 | -3934.714 | 23.979 | 90.137061  |
| 290-28           | 290-27  | 93-14-53  | 214-21-28 | 7.83  | -6.464 | -4.419 | -108146.351 | -3939.133 | 13.331 | -86.171584 |
| 290-27           | 290-26Z | 180-02-44 | 214-24-12 | 7.88  | -6.507 | -4.456 | -108152.858 | -3943.589 | 4.456  | -28.995192 |
| 合計               |         |           |           |       |        |        |             |           | 倍面積    | 317.565852 |
|                  |         |           |           |       |        |        |             |           | 面積     | 158.78     |

面積（倍横距法）計算書

| 地番 = 8-11<br>器械点 | 視準点      | 内角        | 方向角       | 距離    | 緯距     | 経距     | X座標         | Y座標       | 倍横距    | 倍面積         |
|------------------|----------|-----------|-----------|-------|--------|--------|-------------|-----------|--------|-------------|
| 290-31M          | 290-30M  | 88-59-10  | 123-43-54 | 10.69 | -5.936 | 8.890  | -108176.609 | -3947.052 | 8.890  | -52.771040  |
| 290-30M          | 290-6Z   | 89-59-58  | 33-43-52  | 21.67 | 18.023 | 12.034 | -108158.586 | -3935.018 | 29.814 | 537.337722  |
| 290-6Z           | 290-26Z  | 90-01-25  | 303-45-17 | 10.30 | 5.728  | -8.571 | -108152.858 | -3943.589 | 33.277 | 190.610656  |
| 290-26Z          | 290-25L  | 91-03-22  | 214-48-39 | 8.70  | -7.150 | -4.972 | -108160.008 | -3948.561 | 19.734 | -141.109397 |
| 290-25L          | 290-24KK | 179-51-40 | 214-40-19 | 10.06 | -8.281 | -5.728 | -108168.289 | -3954.288 | 9.035  | -74.813454  |
| 290-24KK         | 290-31M  | 180-04-25 | 214-44-44 | 2.90  | -2.384 | -1.654 | -108170.673 | -3955.942 | 1.654  | -3.941812   |
| 合計               |          |           |           |       |        |        |             |           | 倍面積    | 455.312675  |
|                  |          |           |           |       |        |        |             |           | 面積     | 227.65      |

面積 (倍横距法) 計算書

| 地番 = 8-12<br>器械点 | 視準点     | 内角        | 方向角       | 距離    | 緯距     | 経距     | X座標         | Y座標       | 倍横距    | 倍面積         |
|------------------|---------|-----------|-----------|-------|--------|--------|-------------|-----------|--------|-------------|
| 290-21Z          | 290-5   | 88-31-36  | 123-17-37 | 11.06 | -6.074 | 9.249  | -108193.982 | -3958.651 | 9.249  | -56.178426  |
| 290-5            | 290-30M | 90-26-07  | 33-43-44  | 20.88 | 17.373 | 11.599 | -108176.609 | -3947.052 | 30.097 | 522.875181  |
| 290-30M          | 290-31M | 90-00-10  | 303-43-54 | 10.69 | 5.936  | -8.890 | -108170.673 | -3955.942 | 32.806 | 194.736416  |
| 290-31M          | 290-23  | 91-00-52  | 214-44-46 | 7.11  | -5.849 | -4.057 | -108176.522 | -3959.999 | 19.859 | -116.155291 |
| 290-23           | 290-22  | 180-00-29 | 214-45-15 | 10.02 | -8.234 | -5.713 | -108184.756 | -3965.712 | 10.089 | -83.072826  |
| 290-22           | 290-21Z | 180-00-46 | 214-46-01 | 3.83  | -3.152 | -2.188 | -108187.908 | -3967.900 | 2.188  | -6.896576   |
| 合計               |         |           |           |       |        |        |             |           | 倍面積    | 455.308478  |
|                  |         |           |           |       |        |        |             |           | 面積     | 227.65      |

面積（倍横距法）計算書

| 地番 = 8-13<br>器械点 | 視準点     | 内角        | 方向角       | 距離    | 緯距     | 経距     | X座標         | Y座標       | 倍横距    | 倍面積         |
|------------------|---------|-----------|-----------|-------|--------|--------|-------------|-----------|--------|-------------|
| 290-18           | 290-3M  | 90-23-36  | 125-07-35 | 8.48  | -4.883 | 6.941  | -108214.356 | -3975.909 | 6.941  | -33.892903  |
| 290-3M           | 290-4   | 134-56-46 | 80-04-21  | 4.21  | 0.726  | 4.148  | -108213.630 | -3971.761 | 18.030 | 13.089780   |
| 290-4            | 290-5   | 133-38-26 | 33-42-47  | 23.62 | 19.648 | 13.110 | -108193.982 | -3958.651 | 35.288 | 693.338624  |
| 290-5            | 290-21Z | 89-34-50  | 303-17-37 | 11.06 | 6.074  | -9.249 | -108187.908 | -3967.900 | 39.149 | 237.791026  |
| 290-21Z          | 290-20  | 91-28-51  | 214-46-28 | 6.17  | -5.068 | -3.519 | -108192.976 | -3971.419 | 26.381 | -133.698908 |
| 290-20           | 290-19  | 179-55-47 | 214-42-15 | 10.01 | -8.232 | -5.701 | -108201.208 | -3977.120 | 17.161 | -141.269352 |
| 290-19           | 290-18  | 180-01-44 | 214-43-59 | 10.05 | -8.265 | -5.730 | -108209.473 | -3982.850 | 5.730  | -47.358450  |
| 合計               |         |           |           |       |        |        |             |           | 倍面積    | 587.999817  |
|                  |         |           |           |       |        |        |             |           | 面積     | 293.99      |



面積 (倍横距法) 計算書

| 地番 = 9-1<br>器械点 | 視準点   | 内角        | 方向角       | 距離    | 緯距     | 経距     | X座標         | Y座標       | 倍横距    | 倍面積        |
|-----------------|-------|-----------|-----------|-------|--------|--------|-------------|-----------|--------|------------|
| 280-4           | 270-2 | 47-07-49  | 123-03-33 | 11.53 | -6.294 | 9.670  | -108277.918 | -3942.186 | 9.670  | -60.862980 |
| 270-2           | 270-1 | 45-02-54  | 348-06-27 | 3.97  | 3.889  | -0.819 | -108274.029 | -3943.005 | 18.521 | 72.028169  |
| 270-1           | 280-5 | 136-00-47 | 304-07-14 | 6.01  | 3.375  | -4.981 | -108270.654 | -3947.986 | 12.721 | 42.933375  |
| 280-5           | 280-4 | 131-48-30 | 255-55-44 | 3.99  | -0.970 | -3.870 | -108271.624 | -3951.856 | 3.870  | -3.753900  |
| 合計              |       |           |           |       |        |        |             |           | 倍面積    | 50.344664  |
|                 |       |           |           |       |        |        |             |           | 面積     | 25.17      |

面積 (倍横距法) 計算書

| 地番 = 9-2<br>器械点 | 視準点     | 内角        | 方向角       | 距離    | 緯距      | 経距      | X座標         | Y座標       | 倍横距     | 倍面積          |
|-----------------|---------|-----------|-----------|-------|---------|---------|-------------|-----------|---------|--------------|
| 280-5           | 270-1   | 90-20-15  | 124-07-14 | 6.01  | -3.375  | 4.981   | -108274.029 | -3943.005 | 4.981   | -16.810875   |
| 270-1           | 270-18  | 89-41-10  | 33-48-24  | 17.86 | 14.846  | 9.941   | -108259.183 | -3933.064 | 19.903  | 295.479938   |
| 270-18          | 270-17  | 179-55-16 | 33-43-40  | 22.26 | 18.518  | 12.363  | -108240.665 | -3920.701 | 42.207  | 781.589226   |
| 270-17          | 270-16  | 179-59-25 | 33-43-05  | 24.93 | 20.741  | 13.842  | -108219.924 | -3906.859 | 68.412  | 1418.933292  |
| 270-16          | 270-15  | 179-59-16 | 33-42-21  | 23.20 | 19.307  | 12.879  | -108200.617 | -3893.980 | 95.133  | 1836.732831  |
| 270-15          | 270-14  | 180-02-25 | 33-44-46  | 24.92 | 20.722  | 13.844  | -108179.895 | -3880.136 | 121.856 | 2525.100032  |
| 270-14          | 270-13  | 180-01-43 | 33-46-29  | 6.93  | 5.764   | 3.855   | -108174.131 | -3876.281 | 139.555 | 804.395020   |
| 270-13          | 340-1   | 180-09-56 | 33-56-25  | 3.99  | 3.318   | 2.233   | -108170.813 | -3874.048 | 145.643 | 483.243474   |
| 340-1           | 280-8   | 86-47-31  | 300-43-56 | 6.02  | 3.079   | -5.179  | -108167.734 | -3879.227 | 142.697 | 439.364063   |
| 280-8           | 280-7   | 93-00-19  | 213-44-15 | 70.81 | -58.892 | -39.332 | -108226.626 | -3918.559 | 98.186  | -5782.369912 |
| 280-7           | 280-6   | 180-00-01 | 213-44-16 | 29.71 | -24.707 | -16.501 | -108251.333 | -3935.060 | 42.353  | -1046.415571 |
| 280-6           | 280-13D | 180-02-43 | 213-46-59 | 15.06 | -12.518 | -8.375  | -108263.851 | -3943.435 | 17.477  | -218.780111  |
| 280-13D         | 280-5   | 180-00-00 | 213-46-59 | 8.18  | -6.803  | -4.551  | -108270.654 | -3947.986 | 4.551   | -30.963020   |
| 合計              |         |           |           |       |         |         |             |           | 倍面積     | 1489.498387  |
|                 |         |           |           |       |         |         |             |           | 面積      | 744.74       |

面積（倍横距法）計算書

| 地番 = 9-3<br>器械点 | 視準点      | 内角        | 方向角       | 距離    | 緯距     | 経距      | X座標         | Y座標       | 倍横距     | 倍面積         |
|-----------------|----------|-----------|-----------|-------|--------|---------|-------------|-----------|---------|-------------|
| 280-14K         | 280-13B/ | 90-07-25  | 213-47-41 | 8.35  | -6.945 | -4.649  | -108240.688 | -3966.113 | -4.649  | 32.286253   |
| 280-13B/        | 280-13A  | 179-59-59 | 213-47-40 | 4.14  | -3.442 | -2.304  | -108244.131 | -3968.416 | -11.601 | 39.932566   |
| 280-13A         | 280-13E  | 90-00-00  | 123-47-40 | 14.66 | -8.157 | 12.188  | -108252.288 | -3956.229 | -1.717  | 14.006237   |
| 280-13E         | 280-13B  | 180-00-00 | 123-47-40 | 4.33  | -2.411 | 3.603   | -108254.699 | -3952.626 | 14.074  | -33.935547  |
| 280-13B         | 280-13C  | 270-00-00 | 213-47-40 | 2.50  | -2.078 | -1.391  | -108256.777 | -3954.016 | 16.286  | -33.835158  |
| 280-13C         | 280-13D  | 89-58-09  | 123-45-49 | 12.72 | -7.074 | 10.582  | -108263.851 | -3943.435 | 25.477  | -180.227452 |
| 280-13D         | 280-6    | 90-01-10  | 33-46-59  | 15.06 | 12.518 | 8.375   | -108251.333 | -3935.060 | 44.433  | 556.213548  |
| 280-6           | 280-14K  | 89-53-17  | 303-40-16 | 31.72 | 17.590 | -26.404 | -108233.743 | -3961.464 | 26.404  | 464.446360  |
| 合計              |          |           |           |       |        |         |             |           | 倍面積     | 858.886807  |
|                 |          |           |           |       |        |         |             |           | 面積      | 429.44      |

面積（倍横距法）計算書

| 地番 = 9-4<br>器械点 | 視準点     | 内角        | 方向角       | 距離    | 緯距      | 経距      | X座標         | Y座標       | 倍横距    | 倍面積        |
|-----------------|---------|-----------|-----------|-------|---------|---------|-------------|-----------|--------|------------|
| 280-13F         | 280-4   | 89-13-50  | 123-01-30 | 14.39 | -7.843  | 12.065  | -108271.624 | -3951.856 | 12.065 | -94.623116 |
| 280-4           | 280-5   | 132-54-14 | 75-55-44  | 3.99  | 0.970   | 3.870   | -108270.654 | -3947.986 | 28.000 | 27.160271  |
| 280-5           | 280-13D | 137-51-15 | 33-46-59  | 8.18  | 6.803   | 4.551   | -108263.851 | -3943.435 | 36.422 | 247.778622 |
| 280-13D         | 280-13C | 89-58-50  | 303-45-49 | 12.72 | 7.074   | -10.582 | -108256.777 | -3954.016 | 30.391 | 214.991769 |
| 280-13C         | 280-13B | 270-01-51 | 33-47-40  | 2.50  | 2.078   | 1.391   | -108254.699 | -3952.626 | 21.200 | 44.045044  |
| 280-13B         | 280-13E | 90-00-00  | 303-47-40 | 4.33  | 2.411   | -3.603  | -108252.288 | -3956.229 | 18.988 | 45.785346  |
| 280-13E         | 280-13F | 90-00-00  | 213-47-40 | 13.83 | -11.493 | -7.693  | -108263.781 | -3963.921 | 7.693  | -88.413795 |
| 合計              |         |           |           |       |         |         |             |           | 倍面積    | 396.724141 |
|                 |         |           |           |       |         |         |             |           | 面積     | 198.36     |

面積 (倍横距法) 計算書

地番 = 9-5  
器械点

| 器械点     | 視準点     | 内角        | 方向角       | 距離    | 緯距     | 経距      | X座標         | Y座標       | 倍横距     | 倍面積        |
|---------|---------|-----------|-----------|-------|--------|---------|-------------|-----------|---------|------------|
| 280-13E | 280-13A | 90-00-00  | 303-47-40 | 14.66 | 8.157  | -12.188 | -108244.131 | -3968.416 | -12.188 | -99.420454 |
| 280-13A | 280-13K | 90-00-00  | 213-47-40 | 4.23  | -3.519 | -2.356  | -108247.650 | -3970.772 | -26.731 | 94.079297  |
| 280-13K | 280-3   | 179-59-46 | 213-47-26 | 9.79  | -8.138 | -5.446  | -108255.788 | -3976.218 | -34.533 | 281.028242 |
| 280-3   | 280-13F | 89-14-04  | 123-01-30 | 14.66 | -7.993 | 12.297  | -108263.781 | -3963.921 | -27.682 | 221.270709 |
| 280-13F | 280-13E | 90-46-10  | 33-47-40  | 13.83 | 11.493 | 7.693   | -108252.288 | -3956.229 | -7.693  | -88.413795 |
| 合計      |         |           |           |       |        |         |             |           | 倍面積     | 408.543999 |
|         |         |           |           |       |        |         |             |           | 面積      | 204.27     |

面積（倍横距法）計算書

| 地番 = 9-6<br>器械点 | 視準点     | 内角        | 方向角       | 距離    | 緯距     | 経距      | X座標         | Y座標       | 倍横距    | 倍面積        |
|-----------------|---------|-----------|-----------|-------|--------|---------|-------------|-----------|--------|------------|
| 280-1           | 280-2   | 135-22-42 | 169-02-45 | 4.01  | -3.937 | 0.762   | -108249.897 | -3985.363 | 0.762  | -2.999994  |
| 280-2           | 280-3   | 133-44-34 | 122-47-19 | 10.87 | -5.891 | 9.145   | -108255.788 | -3976.218 | 10.669 | -62.851079 |
| 280-3           | 280-13K | 91-00-07  | 33-47-26  | 9.79  | 8.138  | 5.446   | -108247.650 | -3970.772 | 25.260 | 205.565880 |
| 280-13K         | 280-11  | 89-45-04  | 303-32-30 | 13.71 | 7.578  | -11.431 | -108240.072 | -3982.203 | 19.275 | 146.065950 |
| 280-11          | 280-1   | 90-07-33  | 213-40-03 | 7.07  | -5.888 | -3.922  | -108245.960 | -3986.125 | 3.922  | -23.092736 |
| 合計              |         |           |           |       |        |         |             |           | 倍面積    | 262.688021 |
|                 |         |           |           |       |        |         |             |           | 面積     | 131.34     |

面積 (倍横距法) 計算書

| 地番 = 9-7 |          |           |           |       |        |         |             |           |        |            |  |
|----------|----------|-----------|-----------|-------|--------|---------|-------------|-----------|--------|------------|--|
| 器械点      | 視準点      | 内角        | 方向角       | 距離    | 緯距     | 経距      | X座標         | Y座標       | 倍横距    | 倍面積        |  |
| 280-11   | 280-13K  | 89-47-00  | 123-32-30 | 13.71 | -7.578 | 11.431  | -108247.650 | -3970.772 | 11.431 | -86.624118 |  |
| 280-13K  | 280-13A  | 90-15-10  | 33-47-40  | 4.23  | 3.519  | 2.356   | -108244.131 | -3968.416 | 25.218 | 88.751919  |  |
| 280-13A  | 280-13B/ | 180-00-00 | 33-47-40  | 4.14  | 3.442  | 2.304   | -108240.688 | -3966.113 | 29.877 | 102.841392 |  |
| 280-13B/ | 280-10A/ | 89-44-36  | 303-32-16 | 13.72 | 7.580  | -11.436 | -108233.108 | -3977.549 | 20.745 | 157.248366 |  |
| 280-10A/ | 280-11   | 90-13-14  | 213-45-30 | 8.37  | -6.964 | -4.654  | -108240.072 | -3982.203 | 4.654  | -32.412386 |  |
| 合計       |          |           |           |       |        |         |             |           | 倍面積    | 229.805173 |  |
|          |          |           |           |       |        |         |             |           | 面積     | 114.90     |  |

面積（倍横距法）計算書

| 地番 = 9-8<br>器械点 | 視準点      | 内角       | 方向角       | 距離    | 緯距     | 経距      | X座標         | Y座標       | 倍横距    | 倍面積        |
|-----------------|----------|----------|-----------|-------|--------|---------|-------------|-----------|--------|------------|
| 280-10          | 280-10A/ | 90-05-25 | 213-45-30 | 8.38  | -6.974 | -4.662  | -108233.108 | -3977.549 | -4.662 | 32.510856  |
| 280-10A/        | 280-13B/ | 89-46-46 | 123-32-16 | 13.72 | -7.580 | 11.436  | -108240.688 | -3966.113 | 2.113  | -16.015870 |
| 280-13B/        | 280-14K  | 90-15-25 | 33-47-41  | 8.35  | 6.945  | 4.649   | -108233.743 | -3961.464 | 18.197 | 126.388157 |
| 280-14K         | 280-10   | 89-52-24 | 303-40-05 | 13.72 | 7.609  | -11.423 | -108226.134 | -3972.887 | 11.423 | 86.917607  |
| 合計              |          |          |           |       |        |         |             |           | 倍面積    | 229.800750 |
|                 |          |          |           |       |        |         |             |           | 面積     | 114.90     |



面積 (倍横距法) 計算書

| 地番 = 9-9<br>器械点 | 視準点     | 内角        | 方向角       | 距離    | 緯距      | 経距      | X座標         | Y座標       | 倍横距    | 倍面積         |
|-----------------|---------|-----------|-----------|-------|---------|---------|-------------|-----------|--------|-------------|
| 280-10          | 280-14K | 89-56-09  | 123-40-05 | 13.72 | -7.609  | 11.423  | -108233.743 | -3961.464 | 11.423 | -86.917607  |
| 280-14K         | 280-6   | 180-00-11 | 123-40-16 | 31.72 | -17.590 | 26.404  | -108251.333 | -3935.060 | 49.250 | -866.307500 |
| 280-6           | 280-7   | 90-04-00  | 33-44-16  | 29.71 | 24.707  | 16.501  | -108226.626 | -3918.559 | 92.155 | 2276.873585 |
| 280-7           | 280-9   | 89-56-15  | 303-40-31 | 45.45 | 25.204  | -37.827 | -108201.422 | -3956.386 | 70.829 | 1785.174116 |
| 280-9           | 280-10  | 90-03-25  | 213-43-56 | 29.71 | -24.712 | -16.501 | -108226.134 | -3972.887 | 16.501 | -407.772712 |
| 合計              |         |           |           |       |         |         |             |           | 倍面積    | 2701.049882 |
|                 |         |           |           |       |         |         |             |           | 面積     | 1350.52     |

面積 (倍横距法) 計算書

| 地番 = 9-10<br>器械点 | 視準点     | 内角        | 方向角       | 距離    | 緯距      | 経距      | X座標         | Y座標       | 倍横距     | 倍面積          |
|------------------|---------|-----------|-----------|-------|---------|---------|-------------|-----------|---------|--------------|
| 280-9            | 280-7   | 89-57-14  | 123-40-31 | 45.45 | -25.204 | 37.827  | -108226.626 | -3918.559 | 37.827  | -953.391708  |
| 280-7            | 280-8   | 90-03-44  | 33-44-15  | 70.81 | 58.892  | 39.332  | -108167.734 | -3879.227 | 114.986 | 6771.755512  |
| 280-8            | 330-9   | 87-32-37  | 301-16-52 | 20.74 | 10.772  | -17.730 | -108156.962 | -3896.957 | 136.588 | 1471.325936  |
| 330-9            | 280-12  | 179-57-04 | 301-13-56 | 24.77 | 12.844  | -21.181 | -108144.118 | -3918.138 | 97.677  | 1254.563388  |
| 280-12           | 280-23A | 92-29-23  | 213-43-19 | 31.79 | -26.444 | -17.651 | -108170.562 | -3935.789 | 58.845  | -1556.117731 |
| 280-23A          | 280-22A | 90-00-18  | 123-43-37 | 1.44  | -0.804  | 1.205   | -108171.366 | -3934.584 | 42.399  | -34.094445   |
| 280-22A          | 280-21A | 269-59-40 | 213-43-17 | 3.10  | -2.579  | -1.722  | -108173.946 | -3936.306 | 41.882  | -108.023836  |
| 280-21A          | 280-20A | 270-00-00 | 303-43-17 | 1.44  | 0.804   | -1.204  | -108173.142 | -3937.510 | 38.956  | 31.315356    |
| 280-20A          | 280-9   | 90-00-00  | 213-43-17 | 34.00 | -28.280 | -18.876 | -108201.422 | -3956.386 | 18.876  | -533.812596  |
| 合計               |         |           |           |       |         |         |             |           | 倍面積     | 6343.519876  |
|                  |         |           |           |       |         |         |             |           | 面積      | 3171.75      |

面積（倍横距法）計算書

| 地番 = 9-11<br>器械点 | 視準点     | 内角       | 方向角       | 距離   | 緯距     | 経距     | X座標         | Y座標       | 倍横距    | 倍面積      |
|------------------|---------|----------|-----------|------|--------|--------|-------------|-----------|--------|----------|
| 280-23A          | 280-20A | 89-59-22 | 213-42-59 | 3.10 | -2.580 | -1.721 | -108173.142 | -3937.510 | -1.721 | 4.440344 |
| 280-20A          | 280-21A | 90-00-18 | 123-43-17 | 1.44 | -0.804 | 1.204  | -108173.946 | -3936.306 | -2.238 | 1.799371 |
| 280-21A          | 280-22A | 90-00-00 | 33-43-17  | 3.10 | 2.579  | 1.722  | -108171.366 | -3934.584 | 0.688  | 1.773242 |
| 280-22A          | 280-23A | 90-00-20 | 303-43-37 | 1.44 | 0.804  | -1.205 | -108170.562 | -3935.789 | 1.205  | 0.968596 |
| 合計               |         |          |           |      |        |        |             |           | 倍面積    | 8.981553 |
|                  |         |          |           |      |        |        |             |           | 面積     | 4.49     |