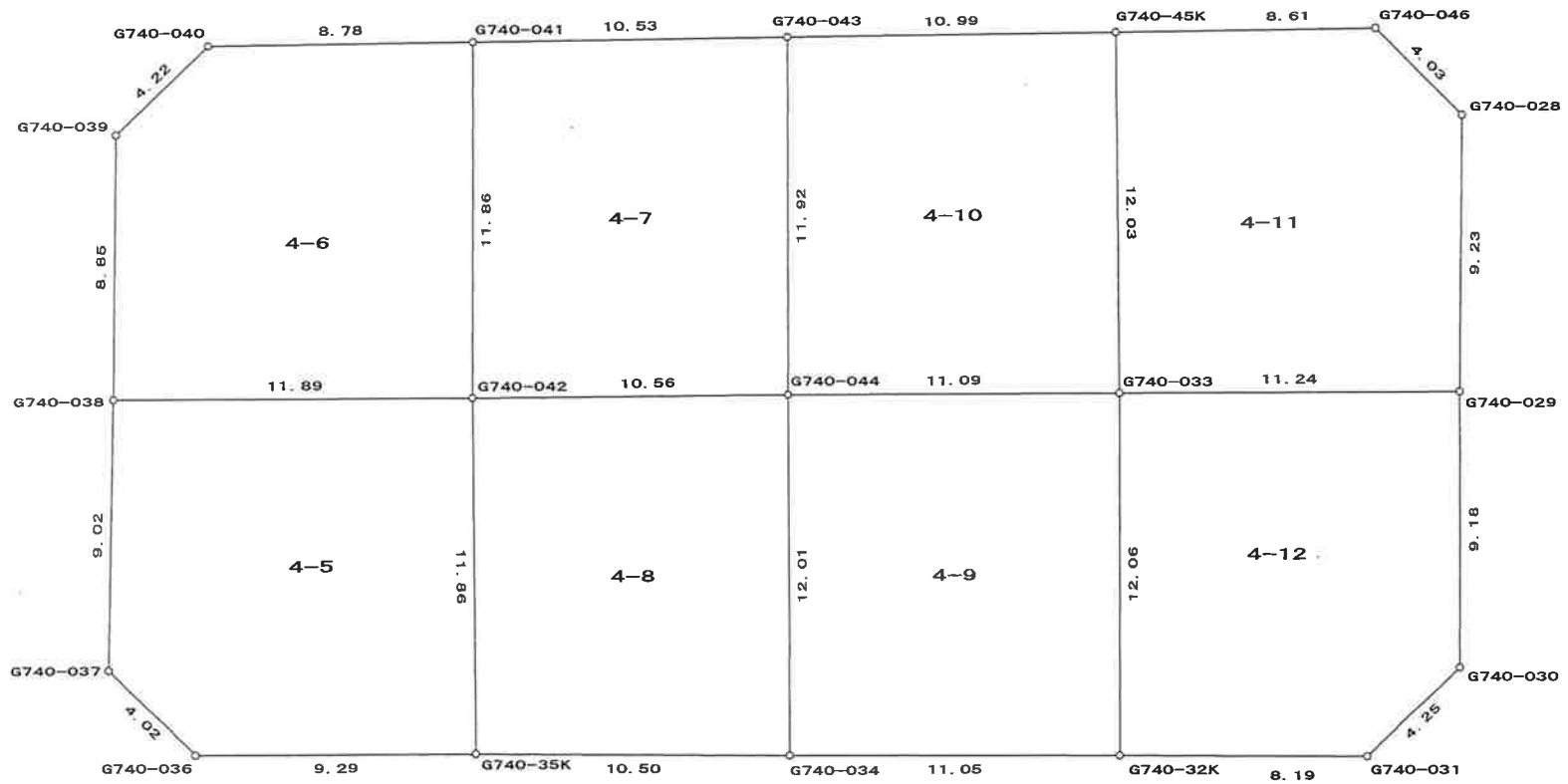
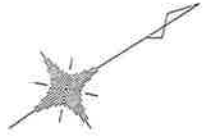


平井二丁目字桜  
(旧740街区)



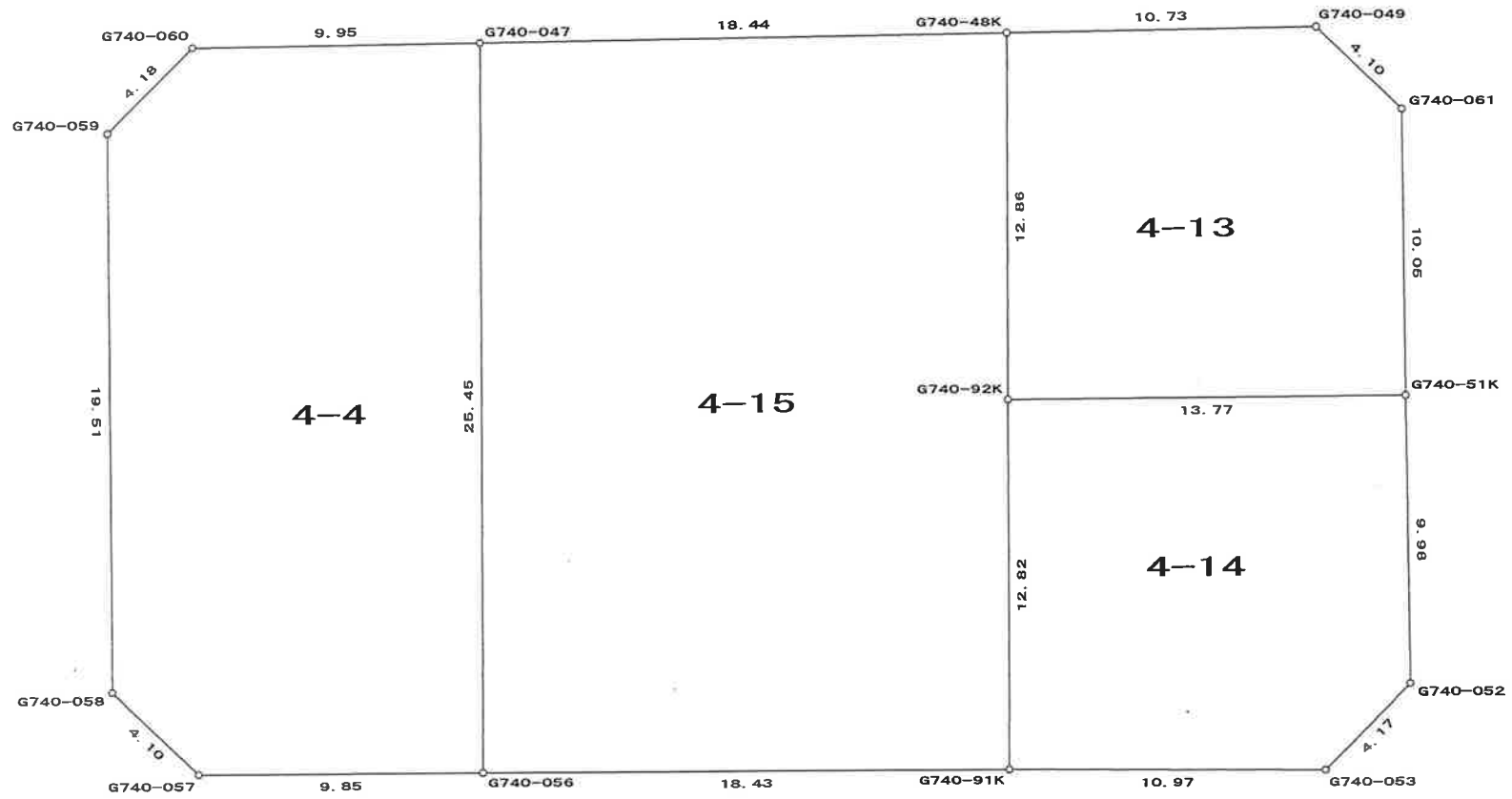
S=1:250

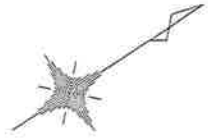




S=1 : 250

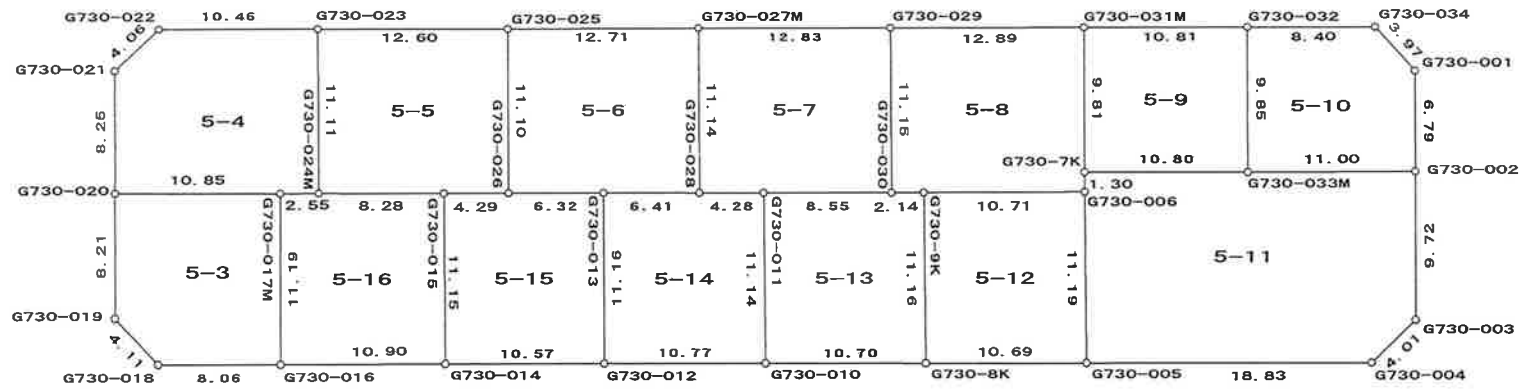
平井二丁目字桜  
(旧740街区)





S=1 : 500

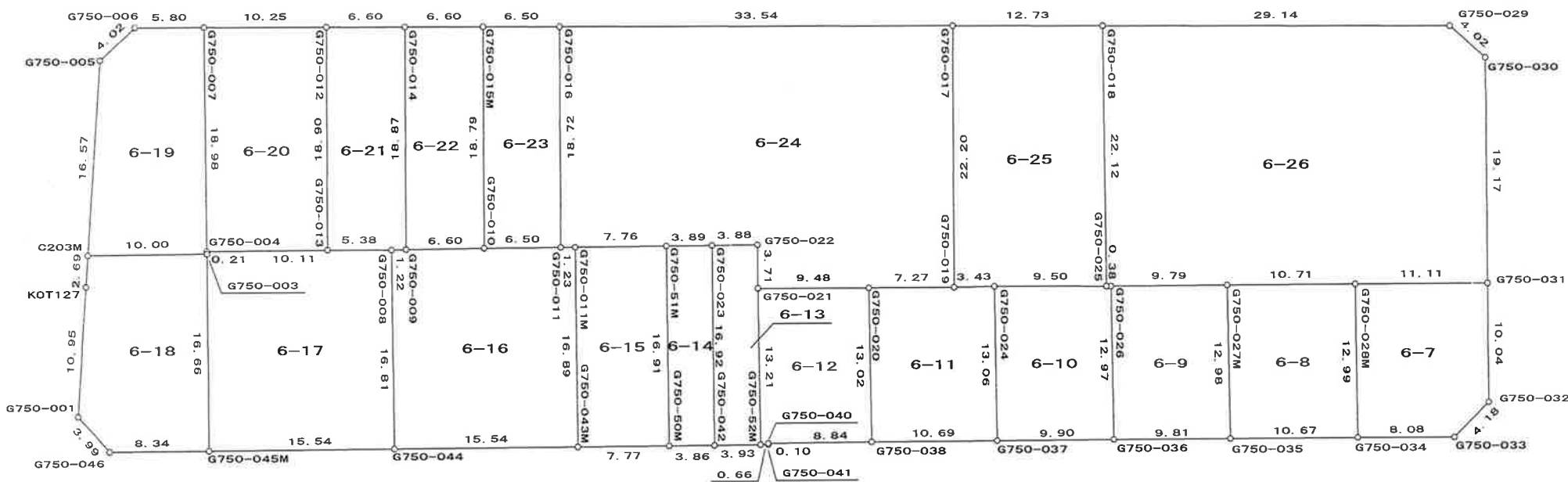
# 平井二丁目字楼 (旧730街区)



# 平井二丁目字桜 (旧750街区)



S=1 : 500



面積 (倍横距法) 計算書

地番 = 4-1

| 器械点      | 視準点      | 内角        | 方向角       | 距離    | 緯距     | 経距     | X座標         | Y座標       | 倍横距     | 倍面積         |
|----------|----------|-----------|-----------|-------|--------|--------|-------------|-----------|---------|-------------|
| G740-059 | G740-060 | 44-44-09  | 347-58-44 | 4.18  | 4.095  | -0.872 | -107791.372 | -3583.495 | -0.872  | -3.570840   |
| G740-060 | G740-047 | 224-18-30 | 32-17-14  | 9.95  | 8.418  | 5.319  | -107782.954 | -3578.176 | 3.575   | 30.094350   |
| G740-047 | G740-48K | 179-55-48 | 32-13-02  | 18.44 | 15.605 | 9.834  | -107767.349 | -3568.342 | 18.728  | 292.250644  |
| G740-48K | G740-049 | 179-57-11 | 32-10-13  | 10.73 | 9.088  | 5.716  | -107758.261 | -3562.626 | 34.278  | 311.508114  |
| G740-049 | G740-061 | 225-33-03 | 77-43-16  | 4.10  | 0.873  | 4.011  | -107757.388 | -3558.615 | 44.005  | 38.416365   |
| G740-061 | G740-030 | 45-13-08  | 302-56-24 | 10.72 | 5.830  | -8.998 | -107751.558 | -3567.613 | 39.018  | 227.474940  |
| G740-030 | G740-031 | 45-04-00  | 168-00-24 | 4.25  | -4.166 | 0.885  | -107755.724 | -3566.728 | 30.905  | -128.750230 |
| G740-031 | G740-32K | 224-18-37 | 212-19-01 | 8.19  | -6.928 | -4.383 | -107762.652 | -3571.111 | 27.407  | -189.888253 |
| G740-32K | G740-034 | 179-48-07 | 212-07-08 | 11.05 | -9.361 | -5.876 | -107772.013 | -3576.987 | 17.148  | -160.517154 |
| G740-034 | G740-35K | 180-19-46 | 212-26-54 | 10.50 | -8.864 | -5.636 | -107780.877 | -3582.623 | 5.636   | -49.959857  |
| G740-35K | G740-036 | 179-27-49 | 211-54-43 | 9.29  | -7.893 | -4.915 | -107788.770 | -3587.538 | -4.915  | 38.792035   |
| G740-036 | G740-037 | 225-02-13 | 256-56-56 | 4.02  | -0.908 | -3.917 | -107789.678 | -3591.455 | -13.747 | 12.482276   |
| G740-037 | G740-059 | 46-17-39  | 123-14-35 | 10.56 | -5.789 | 8.832  | -107795.467 | -3582.623 | -8.832  | 51.128448   |
| 合計       |          |           |           |       |        |        |             |           | 倍面積     | 469.460838  |
|          |          |           |           |       |        |        |             |           | 面積      | 234.73      |

面積 (倍横距法) 計算書

| 地番 = 4-2<br>器械点 | 視準点      | 内角        | 方向角       | 距離    | 緯距      | 経距     | X座標         | Y座標       | 倍横距     | 倍面積         |
|-----------------|----------|-----------|-----------|-------|---------|--------|-------------|-----------|---------|-------------|
| G740-039        | G740-040 | 45-05-22  | 348-20-02 | 4.22  | 4.141   | -0.855 | -107775.773 | -3607.286 | -0.855  | -3.540555   |
| G740-040        | G740-041 | 222-57-51 | 31-17-53  | 8.78  | 7.507   | 4.564  | -107768.266 | -3602.722 | 2.854   | 21.424978   |
| G740-041        | G740-043 | 179-58-15 | 31-16-08  | 10.53 | 9.001   | 5.466  | -107759.265 | -3597.256 | 12.884  | 115.968884  |
| G740-043        | G740-45K | 180-00-52 | 31-17-00  | 10.99 | 9.396   | 5.709  | -107749.869 | -3591.547 | 24.059  | 226.064698  |
| G740-45K        | G740-046 | 179-55-02 | 31-12-02  | 8.61  | 7.369   | 4.463  | -107742.500 | -3587.084 | 34.231  | 252.243601  |
| G740-046        | G740-028 | 226-39-15 | 77-51-17  | 4.03  | 0.849   | 3.945  | -107741.651 | -3583.139 | 42.639  | 36.200511   |
| G740-028        | KOT175K  | 45-47-24  | 303-38-41 | 8.80  | 4.877   | -7.328 | -107736.774 | -3590.467 | 39.256  | 191.446638  |
| KOT175K         | G740-010 | 89-23-16  | 213-01-57 | 2.95  | -2.475  | -1.609 | -107739.249 | -3592.076 | 30.319  | -75.035526  |
| G740-010        | G740-73M | 178-17-47 | 211-19-44 | 13.29 | -11.352 | -6.910 | -107750.601 | -3598.986 | 21.800  | -247.473600 |
| G740-73M        | G740-011 | 179-59-37 | 211-19-21 | 7.31  | -6.246  | -3.801 | -107756.847 | -3602.787 | 11.089  | -69.261894  |
| G740-011        | G740-012 | 180-03-31 | 211-22-52 | 7.74  | -6.612  | -4.033 | -107763.459 | -3606.820 | 3.255   | -21.522060  |
| G740-012        | G740-013 | 179-54-37 | 211-17-29 | 10.58 | -9.044  | -5.497 | -107772.503 | -3612.317 | -6.275  | 56.751100   |
| G740-013        | KOT174   | 180-00-00 | 211-17-29 | 2.97  | -2.541  | -1.544 | -107775.044 | -3613.861 | -13.316 | 33.831039   |
| KOT174          | G740-039 | 91-57-11  | 123-14-40 | 8.88  | -4.870  | 7.430  | -107779.914 | -3606.431 | -7.430  | 36.188034   |
| 合計              |          |           |           |       |         |        |             |           | 倍面積     | 553.285848  |
|                 |          |           |           |       |         |        |             |           | 面積      | 276.64      |

面積 (倍横距法) 計算書

| 地番 = 4-3<br>器械点 | 視準点      | 内角        | 方向角       | 距離    | 緯距     | 経距     | X座標         | Y座標       | 倍横距      | 倍面積         |
|-----------------|----------|-----------|-----------|-------|--------|--------|-------------|-----------|----------|-------------|
| G750-032        | G750-033 | 44-24-46  | 257-21-19 | 4.18  | -0.916 | -4.083 | -107762.991 | -3538.312 | -4.083   | 3.740028    |
| G750-033        | G750-034 | 225-33-53 | 302-55-12 | 8.08  | 4.396  | -6.790 | -107758.595 | -3545.102 | -14.956  | -65.746576  |
| G750-034        | G750-035 | 179-49-51 | 302-45-03 | 10.67 | 5.775  | -8.978 | -107752.820 | -3554.080 | -30.724  | -177.431100 |
| G750-035        | G750-036 | 179-59-56 | 302-44-59 | 9.81  | 5.311  | -8.257 | -107747.509 | -3562.337 | -47.959  | -254.710249 |
| G750-036        | G750-037 | 179-50-05 | 302-35-04 | 9.90  | 5.333  | -8.344 | -107742.176 | -3570.681 | -64.560  | -344.298480 |
| G750-037        | G750-038 | 180-11-31 | 302-46-35 | 10.69 | 5.791  | -8.994 | -107736.385 | -3579.675 | -81.898  | -474.271318 |
| G750-038        | G750-040 | 179-39-56 | 302-26-31 | 8.84  | 4.747  | -7.468 | -107731.638 | -3587.143 | -98.360  | -466.914920 |
| G750-040        | G750-041 | 83-23-41  | 205-50-12 | 0.10  | -0.095 | -0.046 | -107731.733 | -3587.189 | -105.874 | 10.058030   |
| G750-041        | KOT175K  | 187-11-45 | 213-01-57 | 6.01  | -5.041 | -3.278 | -107736.774 | -3590.467 | -109.198 | 550.482222  |
| KOT175K         | G740-028 | 90-36-44  | 123-38-41 | 8.80  | -4.877 | 7.328  | -107741.651 | -3583.139 | -105.148 | 512.790486  |
| G740-028        | G740-029 | 179-12-27 | 122-51-08 | 9.23  | -5.011 | 7.760  | -107746.662 | -3575.379 | -90.060  | 451.290660  |
| G740-029        | G740-030 | 179-22-36 | 122-13-44 | 9.18  | -4.896 | 7.766  | -107751.558 | -3567.613 | -74.534  | 364.918464  |
| G740-030        | G740-061 | 180-42-40 | 122-56-24 | 10.72 | -5.830 | 8.998  | -107757.388 | -3558.615 | -57.770  | 336.799100  |
| G740-061        | G740-51K | 179-50-15 | 122-46-39 | 10.05 | -5.441 | 8.450  | -107762.829 | -3550.165 | -40.322  | 219.395925  |
| G740-51K        | G740-052 | 179-45-44 | 122-32-23 | 9.98  | -5.371 | 8.418  | -107768.200 | -3541.747 | -23.454  | 125.966672  |
| G740-052        | G740-053 | 224-56-15 | 167-28-38 | 4.17  | -4.079 | 0.906  | -107772.279 | -3540.841 | -14.130  | 57.636270   |
| G740-053        | G750-032 | 45-27-55  | 32-56-33  | 12.15 | 10.204 | 6.612  | -107762.075 | -3534.229 | -6.612   | -67.468848  |
| 合計              |          |           |           |       |        |        |             |           | 倍面積      | 782.236366  |
|                 |          |           |           |       |        |        |             |           | 面積       | 391.11      |

面積 (倍横距法) 計算書

地番 = 4-4  
器械点

| 器械点      | 視準点      | 内角        | 方向角       | 距離    | 緯距      | 経距      | X座標         | Y座標       | 倍横距     | 倍面積        |
|----------|----------|-----------|-----------|-------|---------|---------|-------------|-----------|---------|------------|
| G740-058 | G740-057 | 134-10-21 | 77-09-56  | 4.10  | 0.912   | 4.003   | -107805.181 | -3562.253 | 4.003   | 3.650736   |
| G740-057 | G740-056 | 135-47-55 | 32-57-51  | 9.85  | 8.265   | 5.360   | -107796.916 | -3556.893 | 13.366  | 110.469990 |
| G740-056 | G740-047 | 90-18-05  | 303-15-56 | 25.45 | 13.962  | -21.283 | -107782.954 | -3578.176 | -2.557  | -35.700834 |
| G740-047 | G740-060 | 89-01-18  | 212-17-14 | 9.95  | -8.418  | -5.319  | -107791.372 | -3583.495 | -29.159 | 245.460462 |
| G740-060 | G740-059 | 135-41-30 | 167-58-44 | 4.18  | -4.095  | 0.872   | -107795.467 | -3582.623 | -33.606 | 137.616570 |
| G740-059 | G740-058 | 135-00-51 | 122-59-35 | 19.51 | -10.626 | 16.367  | -107806.093 | -3566.256 | -16.367 | 173.915742 |
| 合計       |          |           |           |       |         |         |             |           | 倍面積     | 635.412666 |
|          |          |           |           |       |         |         |             |           | 面積      | 317.70     |



面積 (倍横距法) 計算書

| 地番 = 4-5 |          |           |           |       |         |         |             |           |        |            |  |
|----------|----------|-----------|-----------|-------|---------|---------|-------------|-----------|--------|------------|--|
| 器械点      | 視準点      | 内角        | 方向角       | 距離    | 緯距      | 経距      | X座標         | Y座標       | 倍横距    | 倍面積        |  |
| G740-037 | G740-036 | 133-39-24 | 76-56-56  | 4.02  | 0.908   | 3.917   | -107788.770 | -3587.538 | 3.917  | 3.556636   |  |
| G740-036 | G740-35K | 134-57-47 | 31-54-43  | 9.29  | 7.893   | 4.915   | -107780.877 | -3582.623 | 12.749 | 100.623878 |  |
| G740-35K | G740-042 | 89-51-24  | 301-46-07 | 11.86 | 6.245   | -10.085 | -107774.632 | -3592.708 | 7.579  | 47.333747  |  |
| G740-042 | G740-038 | 90-10-10  | 211-56-17 | 11.89 | -10.092 | -6.291  | -107784.724 | -3598.999 | -8.797 | 88.779324  |  |
| G740-038 | G740-037 | 91-21-15  | 123-17-32 | 9.02  | -4.954  | 7.544   | -107789.678 | -3591.455 | -7.544 | 37.372976  |  |
| 合計       |          |           |           |       |         |         |             |           | 倍面積    | 277.666561 |  |
|          |          |           |           |       |         |         |             |           | 面積     | 138.83     |  |

面積 (倍横距法) 計算書

| 地番 = 4-6<br>器械点 | 視準点      | 内角        | 方向角       | 距離    | 緯距     | 経距      | X座標         | Y座標       | 倍横距     | 倍面積        |
|-----------------|----------|-----------|-----------|-------|--------|---------|-------------|-----------|---------|------------|
| G740-038        | G740-042 | 89-01-37  | 31-56-17  | 11.89 | 10.092 | 6.291   | -107774.632 | -3592.708 | 6.291   | 63.488772  |
| G740-042        | G740-041 | 90-30-23  | 302-26-40 | 11.86 | 6.366  | -10.014 | -107768.266 | -3602.722 | 2.568   | 16.347888  |
| G740-041        | G740-040 | 88-51-13  | 211-17-53 | 8.78  | -7.507 | -4.564  | -107775.773 | -3607.286 | -12.010 | 90.159070  |
| G740-040        | G740-039 | 137-02-09 | 168-20-02 | 4.22  | -4.141 | 0.855   | -107779.914 | -3606.431 | -15.719 | 65.092379  |
| G740-039        | G740-038 | 134-34-38 | 122-54-40 | 8.85  | -4.810 | 7.432   | -107784.724 | -3598.999 | -7.432  | 35.747920  |
| 合計              |          |           |           |       |        |         |             |           | 倍面積     | 270.836029 |
|                 |          |           |           |       |        |         |             |           | 面積      | 135.41     |

面積 (倍横距法) 計算書

| 地番 = 4-7<br>器械点 | 視準点      | 内角       | 方向角       | 距離    | 緯距     | 經距      | X座標         | Y座標       | 倍横距     | 倍面積        |
|-----------------|----------|----------|-----------|-------|--------|---------|-------------|-----------|---------|------------|
| G740-042        | G740-044 | 89-09-04 | 31-35-44  | 10.56 | 8.997  | 5.534   | -107765.635 | -3587.174 | 5.534   | 49.789398  |
| G740-044        | G740-043 | 90-41-24 | 302-17-08 | 11.92 | 6.370  | -10.082 | -107759.265 | -3597.256 | 0.986   | 6.280820   |
| G740-043        | G740-041 | 88-59-00 | 211-16-08 | 10.53 | -9.001 | -5.466  | -107768.266 | -3602.722 | -14.562 | 131.072562 |
| G740-041        | G740-042 | 91-10-32 | 122-26-40 | 11.86 | -6.366 | 10.014  | -107774.632 | -3592.708 | -10.014 | 63.749124  |
| 合計              |          |          |           |       |        |         |             |           | 倍面積     | 250.891904 |
|                 |          |          |           |       |        |         |             |           | 面積      | 125.44     |

面積 (倍横距法) 計算書

| 地番 = 4-8<br>器械点 | 視準点      | 内角       | 方向角       | 距離    | 緯距     | 経距      | X座標         | Y座標       | 倍横距     | 倍面積        |
|-----------------|----------|----------|-----------|-------|--------|---------|-------------|-----------|---------|------------|
| G740-35K        | G740-034 | 90-40-47 | 32-26-54  | 10.50 | 8.864  | 5.636   | -107772.013 | -3576.987 | 5.636   | 49.959005  |
| G740-034        | G740-044 | 89-36-07 | 302-03-01 | 12.01 | 6.378  | -10.187 | -107765.635 | -3587.174 | 1.085   | 6.919516   |
| G740-044        | G740-042 | 89-32-43 | 211-35-44 | 10.56 | -8.997 | -5.534  | -107774.632 | -3592.708 | -14.636 | 131.680958 |
| G740-042        | G740-35K | 90-10-23 | 121-46-07 | 11.86 | -6.245 | 10.085  | -107780.877 | -3582.623 | -10.085 | 62.984573  |
| 合計              |          |          |           |       |        |         |             |           | 倍面積     | 251.544052 |
|                 |          |          |           |       |        |         |             |           | 面積      | 125.77     |

面積 (倍横距法) 計算書

| 地番 = 4-9<br>器械点 | 視準点      | 内角       | 方向角       | 距離    | 緯距     | 經距      | X座標         | Y座標       | 倍横距     | 倍面積        |
|-----------------|----------|----------|-----------|-------|--------|---------|-------------|-----------|---------|------------|
| G740-034        | G740-32K | 90-04-07 | 32-07-08  | 11.05 | 9.361  | 5.876   | -107762.652 | -3571.111 | 5.876   | 55.004589  |
| G740-32K        | G740-033 | 90-07-06 | 302-14-14 | 12.06 | 6.436  | -10.206 | -107756.216 | -3581.317 | 1.546   | 9.951905   |
| G740-033        | G740-044 | 89-38-14 | 211-52-28 | 11.09 | -9.419 | -5.857  | -107765.635 | -3587.174 | -14.517 | 136.735623 |
| G740-044        | G740-034 | 90-10-33 | 122-03-01 | 12.01 | -6.378 | 10.187  | -107772.013 | -3576.987 | -10.187 | 64.972686  |
| 合計              |          |          |           |       |        |         |             |           | 倍面積     | 266.664803 |
|                 |          |          |           |       |        |         |             |           | 面積      | 133.33     |

面積 (倍横距法) 計算書

地番 = 4-10

| 器械点      | 視準点      | 内角       | 方向角       | 距離    | 緯距     | 経距      | X座標         | Y座標       | 倍横距     | 倍面積        |
|----------|----------|----------|-----------|-------|--------|---------|-------------|-----------|---------|------------|
| G740-044 | G740-033 | 89-35-20 | 31-52-28  | 11.09 | 9.419  | 5.857   | -107756.216 | -3581.317 | 5.857   | 55.167083  |
| G740-033 | G740-45K | 89-56-37 | 301-49-05 | 12.03 | 6.347  | -10.230 | -107749.869 | -3591.547 | 1.484   | 9.420555   |
| G740-45K | G740-043 | 89-27-55 | 211-17-00 | 10.99 | -9.396 | -5.709  | -107759.265 | -3597.256 | -14.455 | 135.819813 |
| G740-043 | G740-044 | 91-00-08 | 122-17-08 | 11.92 | -6.370 | 10.082  | -107765.635 | -3587.174 | -10.082 | 64.222340  |
| 合計       |          |          |           |       |        |         |             |           | 倍面積     | 264.629791 |
|          |          |          |           |       |        |         |             |           | 面積      | 132.31     |

面積 (倍横距法) 計算書

| 地番 = 4-11<br>器械点 | 視準点      | 内角        | 方向角       | 距離    | 緯距     | 経距     | X座標         | Y座標       | 倍横距     | 倍面積        |
|------------------|----------|-----------|-----------|-------|--------|--------|-------------|-----------|---------|------------|
| G740-033         | G740-029 | 90-02-37  | 31-51-42  | 11.24 | 9.554  | 5.938  | -107746.662 | -3575.379 | 5.938   | 56.731652  |
| G740-029         | G740-028 | 90-59-26  | 302-51-08 | 9.23  | 5.011  | -7.760 | -107741.651 | -3583.139 | 4.116   | 20.625276  |
| G740-028         | G740-046 | 135-00-09 | 257-51-17 | 4.03  | -0.849 | -3.945 | -107742.500 | -3587.084 | -7.589  | 6.443061   |
| G740-046         | G740-45K | 133-20-45 | 211-12-02 | 8.61  | -7.369 | -4.463 | -107749.869 | -3591.547 | -15.997 | 117.877445 |
| G740-45K         | G740-033 | 90-37-03  | 121-49-05 | 12.03 | -6.347 | 10.230 | -107756.216 | -3581.317 | -10.230 | 64.930322  |
| 合計               |          |           |           |       |        |        |             |           | 倍面積     | 266.607756 |
|                  |          |           |           |       |        |        |             |           | 面積      | 133.30     |

面積 (倍横距法) 計算書

| 地番 = 4-12<br>器械点 | 視準点      | 内角        | 方向角       | 距離    | 緯距     | 経距     | X座標         | Y座標       | 倍横距     | 倍面積        |
|------------------|----------|-----------|-----------|-------|--------|--------|-------------|-----------|---------|------------|
| G740-32K         | G740-031 | 90-04-47  | 32-19-01  | 8.19  | 6.928  | 4.383  | -107755.724 | -3566.728 | 4.383   | 30.365917  |
| G740-031         | G740-030 | 135-41-23 | 348-00-24 | 4.25  | 4.166  | -0.885 | -107751.558 | -3567.613 | 7.881   | 32.830675  |
| G740-030         | G740-029 | 134-13-20 | 302-13-44 | 9.18  | 4.896  | -7.766 | -107746.662 | -3575.379 | -0.770  | -3.771767  |
| G740-029         | G740-033 | 89-37-58  | 211-51-42 | 11.24 | -9.554 | -5.938 | -107756.216 | -3581.317 | -14.474 | 138.288200 |
| G740-033         | G740-32K | 90-22-32  | 122-14-14 | 12.06 | -6.436 | 10.206 | -107762.652 | -3571.111 | -10.206 | 65.691219  |
| 合計               |          |           |           |       |        |        |             |           | 倍面積     | 263.404244 |
|                  |          |           |           |       |        |        |             |           | 面積      | 131.70     |



面積 (倍横距法) 計算書

| 地番 = 4-13 |          |           |           |       |        |        |             |           |         |            |
|-----------|----------|-----------|-----------|-------|--------|--------|-------------|-----------|---------|------------|
| 器械点       | 視準点      | 内角        | 方向角       | 距離    | 緯距     | 経距     | X座標         | Y座標       | 倍横距     | 倍面積        |
| G740-92K  | G740-51K | 89-17-58  | 32-39-55  | 13.77 | 11.595 | 7.434  | -107762.829 | -3550.165 | 7.434   | 86.191980  |
| G740-51K  | G740-061 | 90-06-44  | 302-46-39 | 10.05 | 5.441  | -8.450 | -107757.388 | -3558.615 | 6.417   | 34.916941  |
| G740-061  | G740-049 | 134-56-37 | 257-43-16 | 4.10  | -0.873 | -4.011 | -107758.261 | -3562.626 | -6.044  | 5.276478   |
| G740-049  | G740-48K | 134-26-57 | 212-10-13 | 10.73 | -9.088 | -5.716 | -107767.349 | -3568.342 | -15.771 | 143.326293 |
| G740-48K  | G740-92K | 91-11-44  | 123-21-57 | 12.86 | -7.075 | 10.744 | -107774.424 | -3557.598 | -10.744 | 76.012921  |
| 合計        |          |           |           |       |        |        |             |           | 倍面積     | 345.724613 |
|           |          |           |           |       |        |        |             |           | 面積      | 172.86     |

面積 (倍横距法) 計算書

地番 = 4-14

| 器械点      | 視準点      | 内角        | 方向角       | 距離    | 緯距      | 経距     | X座標         | Y座標       | 倍横距     | 倍面積        |
|----------|----------|-----------|-----------|-------|---------|--------|-------------|-----------|---------|------------|
| G740-91K | G740-053 | 90-05-33  | 33-18-40  | 10.97 | 9.172   | 6.027  | -107772.279 | -3540.841 | 6.027   | 55.278113  |
| G740-053 | G740-052 | 134-09-58 | 347-28-38 | 4.17  | 4.079   | -0.906 | -107768.200 | -3541.747 | 11.148  | 45.473803  |
| G740-052 | G740-51K | 135-03-45 | 302-32-23 | 9.98  | 5.371   | -8.418 | -107762.829 | -3550.165 | 1.825   | 9.799479   |
| G740-51K | G740-92K | 90-07-32  | 212-39-55 | 13.77 | -11.595 | -7.434 | -107774.424 | -3557.598 | -14.027 | 162.637401 |
| G740-92K | G740-91K | 90-33-12  | 123-13-07 | 12.82 | -7.027  | 10.730 | -107781.451 | -3546.868 | -10.730 | 75.399022  |
| 合計       |          |           |           |       |         |        |             |           | 倍面積     | 348.587818 |
|          |          |           |           |       |         |        |             |           | 面積      | 174.29     |

面積 (倍横距法) 計算書

| 地番 = 4-15<br>器械点 | 視準点      | 内角        | 方向角       | 距離    | 緯距      | 經距      | X座標         | Y座標       | 倍横距     | 倍面積        |
|------------------|----------|-----------|-----------|-------|---------|---------|-------------|-----------|---------|------------|
| G740-056         | G740-91K | 89-41-10  | 32-57-06  | 18.43 | 15.465  | 10.025  | -107781.451 | -3546.868 | 10.025  | 155.039143 |
| G740-91K         | G740-92K | 90-16-01  | 303-13-07 | 12.82 | 7.027   | -10.730 | -107774.424 | -3557.598 | 9.319   | 65.484850  |
| G740-92K         | G740-48K | 180-08-50 | 303-21-57 | 12.86 | 7.075   | -10.744 | -107767.349 | -3568.342 | -12.155 | -85.995276 |
| G740-48K         | G740-047 | 88-51-05  | 212-13-02 | 18.44 | -15.605 | -9.834  | -107782.954 | -3578.176 | -32.732 | 510.794579 |
| G740-047         | G740-056 | 91-02-54  | 123-15-56 | 25.45 | -13.962 | 21.283  | -107796.916 | -3556.893 | -21.283 | 297.153246 |
| 合計               |          |           |           |       |         |         |             |           | 倍面積     | 942.476542 |
|                  |          |           |           |       |         |         |             |           | 面積      | 471.23     |

面積 (倍横距法) 計算書

| 地番 = 5-1<br>器械点 | 視準点       | 内角        | 方向角       | 距離    | 緯距      | 経距      | X座標         | Y座標       | 倍横距     | 倍面積         |
|-----------------|-----------|-----------|-----------|-------|---------|---------|-------------|-----------|---------|-------------|
| G750-031        | G750-032  | 179-58-22 | 212-52-35 | 10.04 | -8.432  | -5.450  | -107762.075 | -3534.229 | -5.450  | 45.954400   |
| G750-032        | G740-053  | 180-03-58 | 212-56-33 | 12.15 | -10.204 | -6.612  | -107772.279 | -3540.841 | -17.512 | 178.692448  |
| G740-053        | G740-91   | 180-22-06 | 213-18-39 | 10.97 | -9.173  | -6.028  | -107781.452 | -3546.869 | -30.152 | 276.585015  |
| G740-91         | G740-056  | 179-38-28 | 212-57-07 | 18.42 | -15.464 | -10.024 | -107796.916 | -3556.893 | -46.204 | 714.498306  |
| G740-056        | G740-057  | 180-00-44 | 212-57-51 | 9.85  | -8.265  | -5.360  | -107805.181 | -3562.253 | -61.588 | 509.024820  |
| G740-057        | G740-058  | 224-12-05 | 257-09-56 | 4.10  | -0.912  | -4.003  | -107806.093 | -3566.256 | -70.951 | 64.707312   |
| G740-058        | G730-021  | 45-49-34  | 122-59-30 | 10.48 | -5.711  | 8.797   | -107811.804 | -3557.459 | -66.157 | 377.822627  |
| G730-021        | G730-022  | 45-37-55  | 348-37-25 | 4.06  | 3.981   | -0.801  | -107807.823 | -3558.260 | -58.161 | -231.538941 |
| G730-022        | G730-023  | 224-23-26 | 33-00-51  | 10.46 | 8.774   | 5.701   | -107799.049 | -3552.559 | -53.261 | -467.312014 |
| G730-023        | G730-025  | 180-07-21 | 33-08-12  | 12.60 | 10.556  | 6.891   | -107788.493 | -3545.668 | -40.669 | -429.301964 |
| G730-025        | G730-027M | 179-44-45 | 32-52-57  | 12.71 | 10.676  | 6.902   | -107777.817 | -3538.766 | -26.876 | -286.928176 |
| G730-027M       | G730-029  | 180-08-03 | 33-01-00  | 12.83 | 10.763  | 6.994   | -107767.054 | -3531.772 | -12.980 | -139.703740 |
| G730-029        | G730-031M | 179-55-35 | 32-56-35  | 12.89 | 10.818  | 7.010   | -107756.236 | -3524.762 | 1.024   | 11.077632   |
| G730-031M       | G730-032  | 179-58-42 | 32-55-17  | 10.81 | 9.077   | 5.877   | -107747.159 | -3518.885 | 13.911  | 126.270147  |
| G730-032        | G730-034  | 180-04-10 | 32-59-27  | 8.40  | 7.052   | 4.578   | -107740.107 | -3514.307 | 24.366  | 171.829032  |
| G730-034        | G730-001  | 229-16-42 | 82-16-09  | 3.97  | 0.535   | 3.941   | -107739.572 | -3510.366 | 32.885  | 17.593475   |
| G730-001        | G750-029  | 41-00-10  | 303-16-19 | 10.79 | 5.920   | -9.022  | -107733.652 | -3519.388 | 27.804  | 164.599680  |
| G750-029        | G750-030  | 41-57-22  | 165-13-41 | 4.02  | -3.891  | 1.026   | -107737.543 | -3518.362 | 19.808  | -77.072928  |
| G750-030        | G750-031  | 227-40-32 | 212-54-13 | 19.17 | -16.100 | -10.417 | -107753.643 | -3528.779 | 10.417  | -167.713700 |
| 合計              |           |           |           |       |         |         |             |           | 倍面積     | 859.083431  |
|                 |           |           |           |       |         |         |             |           | 面積      | 429.54      |

面積 (倍横距法) 計算書

| 地番 = 5-2<br>器械点 | 視準点      | 内角        | 方向角       | 距離    | 緯距     | 経距     | X座標         | Y座標       | 倍横距    | 倍面積        |
|-----------------|----------|-----------|-----------|-------|--------|--------|-------------|-----------|--------|------------|
| G730-003        | G730-004 | 136-32-42 | 169-15-11 | 4.01  | -3.941 | 0.748  | -107752.526 | -3495.769 | 0.748  | -2.947868  |
| G730-004        | G760-006 | 43-45-05  | 33-00-16  | 11.70 | 9.818  | 6.377  | -107742.708 | -3489.392 | 7.873  | 77.297114  |
| G760-006        | G760-007 | 44-39-58  | 257-40-14 | 3.99  | -0.852 | -3.898 | -107743.560 | -3493.290 | 10.352 | -8.819904  |
| G760-007        | G730-003 | 135-02-15 | 212-42-29 | 5.97  | -5.025 | -3.227 | -107748.585 | -3496.517 | 3.227  | -16.215675 |
| 合計              |          |           |           |       |        |        |             |           | 倍面積    | 49.313667  |
|                 |          |           |           |       |        |        |             |           | 面積     | 24.65      |

面積 (倍横距法) 計算書

| 地番 = 5-3<br>器械点 | 視準点       | 内角        | 方向角       | 距離    | 緯距     | 経距     | X座標         | Y座標       | 倍横距    | 倍面積        |
|-----------------|-----------|-----------|-----------|-------|--------|--------|-------------|-----------|--------|------------|
| G730-020        | G730-019  | 90-07-34  | 123-17-37 | 8.21  | -4.509 | 6.866  | -107820.826 | -3543.678 | 6.866  | -30.958794 |
| G730-019        | G730-018  | 136-33-58 | 79-51-35  | 4.11  | 0.724  | 4.048  | -107820.102 | -3539.630 | 17.780 | 12.872720  |
| G730-018        | G730-016  | 133-14-14 | 33-05-49  | 8.06  | 6.755  | 4.403  | -107813.347 | -3535.227 | 26.231 | 177.190405 |
| G730-016        | G730-017M | 90-01-06  | 303-06-55 | 11.19 | 6.117  | -9.378 | -107807.230 | -3544.605 | 21.256 | 130.022952 |
| G730-017M       | G730-020  | 90-03-08  | 213-10-03 | 10.85 | -9.087 | -5.939 | -107816.317 | -3550.544 | 5.939  | -53.967693 |
| 合計              |           |           |           |       |        |        |             |           | 倍面積    | 235.159590 |
|                 |           |           |           |       |        |        |             |           | 面積     | 117.57     |

面積 (倍横距法) 計算書

地番 = 5-4  
器械点

| 器械点       | 視準点       | 内角        | 方向角       | 距離    | 緯距     | 経距     | X座標         | Y座標       | 倍横距    | 倍面積        |
|-----------|-----------|-----------|-----------|-------|--------|--------|-------------|-----------|--------|------------|
| G730-022  | G730-021  | 135-36-34 | 168-37-25 | 4.06  | -3.981 | 0.801  | -107811.804 | -3557.459 | 0.801  | -3.188781  |
| G730-021  | G730-020  | 134-30-23 | 123-07-48 | 8.25  | -4.513 | 6.915  | -107816.317 | -3550.544 | 8.517  | -38.437221 |
| G730-020  | G730-017M | 90-02-15  | 33-10-03  | 10.85 | 9.087  | 5.939  | -107807.230 | -3544.605 | 21.371 | 194.198277 |
| G730-017M | G730-024M | 179-37-33 | 32-47-36  | 2.55  | 2.145  | 1.382  | -107805.085 | -3543.223 | 28.692 | 61.544340  |
| G730-024M | G730-023  | 90-05-26  | 302-53-02 | 11.11 | 6.036  | -9.336 | -107799.049 | -3552.559 | 20.738 | 125.174568 |
| G730-023  | G730-022  | 90-07-49  | 213-00-51 | 10.46 | -8.774 | -5.701 | -107807.823 | -3558.260 | 5.701  | -50.020574 |
| 合計        |           |           |           |       |        |        |             |           | 倍面積    | 289.270609 |
|           |           |           |           |       |        |        |             |           | 面積     | 144.63     |

面積 (倍横距法) 計算書

地番 = 5-5  
器械点

| 器械点       | 視準点       | 内角        | 方向角       | 距離    | 緯距      | 経距     | X座標         | Y座標       | 倍横距    | 倍面積        |
|-----------|-----------|-----------|-----------|-------|---------|--------|-------------|-----------|--------|------------|
| G730-023  | G730-024M | 89-44-50  | 122-53-02 | 11.11 | -6.036  | 9.336  | -107805.085 | -3543.223 | 9.336  | -56.352096 |
| G730-024M | G730-015  | 90-16-03  | 33-09-05  | 8.28  | 6.940   | 4.533  | -107798.145 | -3538.690 | 23.205 | 161.042700 |
| G730-015  | G730-026  | 179-47-17 | 32-56-22  | 4.29  | 3.607   | 2.337  | -107794.538 | -3536.353 | 30.075 | 108.480525 |
| G730-026  | G730-025  | 90-02-32  | 302-58-54 | 11.10 | 6.045   | -9.315 | -107788.493 | -3545.668 | 23.097 | 139.621365 |
| G730-025  | G730-023  | 90-09-18  | 213-08-12 | 12.60 | -10.556 | -6.891 | -107799.049 | -3552.559 | 6.891  | -72.741396 |
| 合計        |           |           |           |       |         |        |             |           | 倍面積    | 280.051098 |
|           |           |           |           |       |         |        |             |           | 面積     | 140.02     |



面積 (倍横距法) 計算書

| 地番 = 5-6<br>器械点 | 視準点       | 内角        | 方向角       | 距離    | 緯距      | 経距     | X座標         | Y座標       | 倍横距    | 倍面積        |
|-----------------|-----------|-----------|-----------|-------|---------|--------|-------------|-----------|--------|------------|
| G730-025        | G730-026  | 90-05-57  | 122-58-54 | 11.10 | -6.045  | 9.315  | -107794.538 | -3536.353 | 9.315  | -56.309175 |
| G730-026        | G730-013  | 90-01-30  | 33-00-24  | 6.32  | 5.305   | 3.446  | -107789.233 | -3532.907 | 22.076 | 117.113180 |
| G730-013        | G730-028  | 180-04-44 | 33-05-08  | 6.41  | 5.375   | 3.502  | -107783.858 | -3529.405 | 29.024 | 156.004000 |
| G730-028        | G730-027M | 89-45-00  | 302-50-08 | 11.14 | 6.041   | -9.361 | -107777.817 | -3538.766 | 23.165 | 139.939765 |
| G730-027M       | G730-025  | 90-02-49  | 212-52-57 | 12.71 | -10.676 | -6.902 | -107788.493 | -3545.668 | 6.902  | -73.685752 |
| 合計              |           |           |           |       |         |        |             |           | 倍面積    | 283.062018 |
|                 |           |           |           |       |         |        |             |           | 面積     | 141.53     |

面積 (倍横距法) 計算書

| 地番 = 5-7<br>器械点 | 視準点       | 内角        | 方向角       | 距離    | 緯距      | 経距     | X座標         | Y座標       | 倍横距    | 倍面積        |
|-----------------|-----------|-----------|-----------|-------|---------|--------|-------------|-----------|--------|------------|
| G730-027M       | G730-028  | 89-49-08  | 122-50-08 | 11.14 | -6.041  | 9.361  | -107783.858 | -3529.405 | 9.361  | -56.549801 |
| G730-028        | G730-011  | 90-14-34  | 33-04-42  | 4.28  | 3.591   | 2.339  | -107780.267 | -3527.066 | 21.061 | 75.630051  |
| G730-011        | G730-030  | 180-01-02 | 33-05-44  | 8.55  | 7.165   | 4.670  | -107773.102 | -3522.396 | 28.070 | 201.121550 |
| G730-030        | G730-029  | 89-43-43  | 302-49-27 | 11.15 | 6.048   | -9.376 | -107767.054 | -3531.772 | 23.364 | 141.305472 |
| G730-029        | G730-027M | 90-11-33  | 213-01-00 | 12.83 | -10.763 | -6.994 | -107777.817 | -3538.766 | 6.994  | -75.276422 |
| 合計              |           |           |           |       |         |        |             |           | 倍面積    | 286.230850 |
|                 |           |           |           |       |         |        |             |           | 面積     | 143.11     |

面積 (倍横距法) 計算書

地番 = 5-8  
器械点

| 器械点       | 視準点       | 内角        | 方向角       | 距離    | 緯距      | 経距     | X座標         | Y座標       | 倍横距    | 倍面積        |
|-----------|-----------|-----------|-----------|-------|---------|--------|-------------|-----------|--------|------------|
| G730-029  | G730-030  | 89-52-52  | 122-49-27 | 11.15 | -6.048  | 9.376  | -107773.102 | -3522.396 | 9.376  | -56.706048 |
| G730-030  | G730-9K   | 89-38-52  | 32-28-19  | 2.14  | 1.812   | 1.153  | -107771.290 | -3521.243 | 19.905 | 36.068127  |
| G730-9K   | G730-006  | 180-23-02 | 32-51-21  | 10.71 | 8.999   | 5.812  | -107762.291 | -3515.431 | 26.870 | 241.804216 |
| G730-006  | G730-7K   | 90-14-48  | 303-06-09 | 1.30  | 0.713   | -1.094 | -107761.578 | -3516.525 | 31.588 | 22.528764  |
| G730-7K   | G730-031M | 179-51-40 | 302-57-49 | 9.81  | 5.342   | -8.237 | -107756.236 | -3524.762 | 22.257 | 118.892587 |
| G730-031M | G730-029  | 89-58-46  | 212-56-35 | 12.89 | -10.818 | -7.010 | -107767.054 | -3531.772 | 7.010  | -75.834180 |
| 合計        |           |           |           |       |         |        |             |           | 倍面積    | 286.753466 |
|           |           |           |           |       |         |        |             |           | 面積     | 143.37     |

面積（倍横距法）計算書

地番 = 5-9

| 器械点       | 視準点       | 内角       | 方向角       | 距離    | 緯距     | 経距     | X座標         | Y座標       | 倍横距    | 倍面積        |
|-----------|-----------|----------|-----------|-------|--------|--------|-------------|-----------|--------|------------|
| G730-031M | G730-7K   | 90-02-32 | 122-57-49 | 9.81  | -5.342 | 8.237  | -107761.578 | -3516.525 | 8.237  | -44.000626 |
| G730-7K   | G730-033M | 90-07-48 | 33-05-37  | 10.80 | 9.056  | 5.902  | -107752.522 | -3510.623 | 22.376 | 202.632908 |
| G730-033M | G730-032  | 89-53-41 | 302-59-18 | 9.85  | 5.363  | -8.262 | -107747.159 | -3518.885 | 20.016 | 107.345808 |
| G730-032  | G730-031M | 89-55-59 | 212-55-17 | 10.81 | -9.077 | -5.877 | -107756.236 | -3524.762 | 5.877  | -53.345529 |
| 合計        |           |          |           |       |        |        |             |           | 倍面積    | 212.632561 |
|           |           |          |           |       |        |        |             |           | 面積     | 106.31     |

面積 (倍横距法) 計算書

地番 = 5-10

| 器械点       | 視準点       | 内角        | 方向角       | 距離    | 緯距     | 経距     | X座標         | Y座標       | 倍横距    | 倍面積        |
|-----------|-----------|-----------|-----------|-------|--------|--------|-------------|-----------|--------|------------|
| G730-032  | G730-033M | 89-59-51  | 122-59-18 | 9.85  | -5.363 | 8.262  | -107752.522 | -3510.623 | 8.262  | -44.309106 |
| G730-033M | G730-002  | 89-47-25  | 32-46-43  | 11.00 | 9.251  | 5.957  | -107743.271 | -3504.666 | 22.481 | 207.971731 |
| G730-002  | G730-001  | 90-12-10  | 302-58-53 | 6.79  | 3.699  | -5.700 | -107739.572 | -3510.366 | 22.738 | 84.107862  |
| G730-001  | G730-034  | 139-17-16 | 262-16-09 | 3.97  | -0.535 | -3.941 | -107740.107 | -3514.307 | 13.097 | -7.006895  |
| G730-034  | G730-032  | 130-43-18 | 212-59-27 | 8.40  | -7.052 | -4.578 | -107747.159 | -3518.885 | 4.578  | -32.284056 |
| 合計        |           |           |           |       |        |        |             |           | 倍面積    | 208.479536 |
|           |           |           |           |       |        |        |             |           | 面積     | 104.23     |

面積 (倍横距法) 計算書

| 地番 = 5-11<br>器械点 | 視準点       | 内角        | 方向角       | 距離    | 緯距     | 経距     | X座標         | Y座標       | 倍横距    | 倍面積         |
|------------------|-----------|-----------|-----------|-------|--------|--------|-------------|-----------|--------|-------------|
| G730-7K          | G730-006  | 90-00-32  | 123-06-09 | 1.30  | -0.713 | 1.094  | -107762.291 | -3515.431 | 1.094  | -0.780212   |
| G730-006         | G730-005  | 179-34-20 | 122-40-29 | 11.19 | -6.041 | 9.419  | -107768.332 | -3506.012 | 11.607 | -70.117293  |
| G730-005         | G730-004  | 90-16-13  | 32-56-42  | 18.83 | 15.806 | 10.243 | -107752.526 | -3495.769 | 31.269 | 494.236259  |
| G730-004         | G730-003  | 136-18-29 | 349-15-11 | 4.01  | 3.941  | -0.748 | -107748.585 | -3496.517 | 40.764 | 160.650536  |
| G730-003         | G730-002  | 133-51-20 | 303-06-31 | 9.72  | 5.314  | -8.149 | -107743.271 | -3504.666 | 31.867 | 169.340715  |
| G730-002         | G730-033M | 89-40-12  | 212-46-43 | 11.00 | -9.251 | -5.957 | -107752.522 | -3510.623 | 17.761 | -164.306101 |
| G730-033M        | G730-7K   | 180-18-54 | 213-05-37 | 10.80 | -9.056 | -5.902 | -107761.578 | -3516.525 | 5.902  | -53.446855  |
| 合計               |           |           |           |       |        |        |             |           | 倍面積    | 535.577049  |
|                  |           |           |           |       |        |        |             |           | 面積     | 267.78      |

面積（倍横距法）計算書

| 地番 = 5-12<br>器械点 | 視準点      | 内角       | 方向角       | 距離    | 緯距     | 経距     | X座標         | Y座標       | 倍横距     | 倍面積        |
|------------------|----------|----------|-----------|-------|--------|--------|-------------|-----------|---------|------------|
| G730-8K          | G730-005 | 90-23-12 | 32-59-26  | 10.69 | 8.974  | 5.826  | -107768.332 | -3506.012 | 5.826   | 52.277904  |
| G730-005         | G730-006 | 89-41-03 | 302-40-29 | 11.19 | 6.041  | -9.419 | -107762.291 | -3515.431 | 2.232   | 13.484415  |
| G730-006         | G730-9K  | 90-10-52 | 212-51-21 | 10.71 | -8.999 | -5.812 | -107771.290 | -3521.243 | -12.999 | 116.975494 |
| G730-9K          | G730-8K  | 89-44-53 | 122-36-14 | 11.16 | -6.016 | 9.405  | -107777.306 | -3511.838 | -9.405  | 56.580999  |
| 合計               |          |          |           |       |        |        |             |           | 倍面積     | 239.318812 |
|                  |          |          |           |       |        |        |             |           | 面積      | 119.65     |

面積 (倍横距法) 計算書

地番 = 5-13

| 器械点      | 視準点      | 内角        | 方向角       | 距離    | 緯距     | 経距     | X座標         | Y座標       | 倍横距     | 倍面積        |
|----------|----------|-----------|-----------|-------|--------|--------|-------------|-----------|---------|------------|
| G730-010 | G730-8K  | 90-24-15  | 33-03-18  | 10.70 | 8.976  | 5.841  | -107777.306 | -3511.838 | 5.841   | 52.433439  |
| G730-8K  | G730-9K  | 89-32-56  | 302-36-14 | 11.16 | 6.016  | -9.405 | -107771.290 | -3521.243 | 2.278   | 13.701441  |
| G730-9K  | G730-030 | 89-52-05  | 212-28-19 | 2.14  | -1.812 | -1.153 | -107773.102 | -3522.396 | -8.281  | 15.004959  |
| G730-030 | G730-011 | 180-37-25 | 213-05-44 | 8.55  | -7.165 | -4.670 | -107780.267 | -3527.066 | -14.104 | 101.055160 |
| G730-011 | G730-010 | 89-33-19  | 122-39-03 | 11.14 | -6.015 | 9.387  | -107786.282 | -3517.679 | -9.387  | 56.462805  |
| 合計       |          |           |           |       |        |        |             |           | 倍面積     | 238.657804 |
|          |          |           |           |       |        |        |             |           | 面積      | 119.32     |



面積 (倍横距法) 計算書

| 地番 = 5-14 |          |           |           |       |        |        |             |           |         |            |
|-----------|----------|-----------|-----------|-------|--------|--------|-------------|-----------|---------|------------|
| 器械点       | 視準点      | 内角        | 方向角       | 距離    | 緯距     | 経距     | X座標         | Y座標       | 倍横距     | 倍面積        |
| G730-012  | G730-010 | 89-58-50  | 33-00-26  | 10.77 | 9.035  | 5.869  | -107786.282 | -3517.679 | 5.869   | 53.026415  |
| G730-010  | G730-011 | 89-38-37  | 302-39-03 | 11.14 | 6.015  | -9.387 | -107780.267 | -3527.066 | 2.351   | 14.141265  |
| G730-011  | G730-028 | 90-25-39  | 213-04-42 | 4.28  | -3.591 | -2.339 | -107783.858 | -3529.405 | -9.375  | 33.665625  |
| G730-028  | G730-013 | 180-00-26 | 213-05-08 | 6.41  | -5.375 | -3.502 | -107789.233 | -3532.907 | -15.216 | 81.786000  |
| G730-013  | G730-012 | 89-56-28  | 123-01-36 | 11.16 | -6.084 | 9.359  | -107795.317 | -3523.548 | -9.359  | 56.940156  |
| 合計        |          |           |           |       |        |        |             |           | 倍面積     | 239.559461 |
|           |          |           |           |       |        |        |             |           | 面積      | 119.77     |

面積 (倍横距法) 計算書

| 地番 = 5-15 |          |           |           |       |        |        |             |           |         |            |
|-----------|----------|-----------|-----------|-------|--------|--------|-------------|-----------|---------|------------|
| 器械点       | 視準点      | 内角        | 方向角       | 距離    | 緯距     | 経距     | X座標         | Y座標       | 倍横距     | 倍面積        |
| G730-014  | G730-012 | 90-12-55  | 33-00-34  | 10.57 | 8.871  | 5.763  | -107795.317 | -3523.548 | 5.763   | 51.123573  |
| G730-012  | G730-013 | 90-01-02  | 303-01-36 | 11.16 | 6.084  | -9.359 | -107789.233 | -3532.907 | 2.167   | 13.184028  |
| G730-013  | G730-026 | 89-58-48  | 213-00-24 | 6.32  | -5.305 | -3.446 | -107794.538 | -3536.353 | -10.638 | 56.434590  |
| G730-026  | G730-015 | 179-55-58 | 212-56-22 | 4.29  | -3.607 | -2.337 | -107798.145 | -3538.690 | -16.421 | 59.230547  |
| G730-015  | G730-014 | 89-51-17  | 122-47-39 | 11.15 | -6.043 | 9.379  | -107804.188 | -3529.311 | -9.379  | 56.677297  |
| 合計        |          |           |           |       |        |        |             |           | 倍面積     | 236.650035 |
|           |          |           |           |       |        |        |             |           | 面積      | 118.32     |

面積 (倍横距法) 計算書

| 地番 = 5-16<br>器械点 | 視準点       | 内角        | 方向角       | 距離    | 緯距     | 経距     | X座標         | Y座標       | 倍横距    | 倍面積        |
|------------------|-----------|-----------|-----------|-------|--------|--------|-------------|-----------|--------|------------|
| G730-017M        | G730-016  | 90-19-19  | 123-06-55 | 11.19 | -6.117 | 9.378  | -107813.347 | -3535.227 | 9.378  | -57.365226 |
| G730-016         | G730-014  | 89-44-39  | 32-51-34  | 10.90 | 9.159  | 5.916  | -107804.188 | -3529.311 | 24.672 | 225.970848 |
| G730-014         | G730-015  | 89-56-05  | 302-47-39 | 11.15 | 6.043  | -9.379 | -107798.145 | -3538.690 | 21.209 | 128.165987 |
| G730-015         | G730-024M | 90-21-26  | 213-09-05 | 8.28  | -6.940 | -4.533 | -107805.085 | -3543.223 | 7.297  | -50.641180 |
| G730-024M        | G730-017M | 179-38-31 | 212-47-36 | 2.55  | -2.145 | -1.382 | -107807.230 | -3544.605 | 1.382  | -2.964390  |
| 合計               |           |           |           |       |        |        |             |           | 倍面積    | 243.166039 |
|                  |           |           |           |       |        |        |             |           | 面積     | 121.58     |

面積 (倍横距法) 計算書

| 地番 = 6-1<br>器械点 | 視準点      | 内角       | 方向角       | 距離   | 緯距     | 経距     | X座標         | Y座標       | 倍横距   | 倍面積       |
|-----------------|----------|----------|-----------|------|--------|--------|-------------|-----------|-------|-----------|
| KOT176          | G750-046 | 85-41-19 | 122-50-12 | 2.85 | -1.547 | 2.397  | -107701.650 | -3634.041 | 2.397 | -3.707657 |
| G750-046        | G750-001 | 48-51-02 | 351-41-14 | 3.99 | 3.949  | -0.577 | -107697.701 | -3634.618 | 4.217 | 16.652037 |
| G750-001        | KOT176   | 45-27-39 | 217-08-53 | 3.01 | -2.402 | -1.820 | -107700.103 | -3636.438 | 1.820 | -4.371615 |
| 合計              |          |          |           |      |        |        |             |           | 倍面積   | 8.572765  |
|                 |          |          |           |      |        |        |             |           | 面積    | 4.28      |

面積 (倍横距法) 計算書

| 地番 = 6-2<br>器械点 | 視準点      | 内角        | 方向角       | 距離    | 緯距      | 経距     | X座標         | Y座標       | 倍横距    | 倍面積        |
|-----------------|----------|-----------|-----------|-------|---------|--------|-------------|-----------|--------|------------|
| KOT177          | KOT176   | 85-51-17  | 122-50-12 | 5.98  | -3.248  | 5.032  | -107700.103 | -3636.438 | 5.032  | -16.343771 |
| KOT176          | G750-001 | 94-18-41  | 37-08-53  | 3.01  | 2.402   | 1.820  | -107697.701 | -3634.618 | 11.885 | 28.548563  |
| G750-001        | KOT127   | 179-45-10 | 36-54-03  | 10.95 | 8.758   | 6.576  | -107688.943 | -3628.042 | 20.280 | 177.616414 |
| KOT127          | KOT126   | 87-40-12  | 304-34-15 | 5.97  | 3.389   | -4.919 | -107685.554 | -3632.961 | 21.938 | 74.355225  |
| KOT126          | G770-020 | 92-18-39  | 216-52-54 | 0.57  | -0.456  | -0.342 | -107686.010 | -3633.303 | 16.677 | -7.610630  |
| G770-020        | KOT177   | 180-06-01 | 216-58-55 | 13.57 | -10.845 | -8.167 | -107696.855 | -3641.470 | 8.167  | -88.577468 |
| 合計              |          |           |           |       |         |        |             |           | 倍面積    | 167.988333 |
|                 |          |           |           |       |         |        |             |           | 面積     | 83.99      |

面積 (倍横距法) 計算書

| 地番 = 6-3<br>器械点 | 視準点      | 内角        | 方向角       | 距離    | 緯距      | 経距      | X座標         | Y座標       | 倍横距     | 倍面積         |
|-----------------|----------|-----------|-----------|-------|---------|---------|-------------|-----------|---------|-------------|
| KOT181K         | C54K1    | 93-57-08  | 217-01-09 | 25.74 | -20.554 | -15.500 | -107685.916 | -3628.523 | -15.500 | 318.589325  |
| C54K1           | KOT134K  | 267-26-12 | 304-27-21 | 3.77  | 2.133   | -3.109  | -107683.783 | -3631.632 | -34.109 | -72.765192  |
| KOT134K         | KOT126   | 92-25-33  | 216-52-54 | 2.21  | -1.771  | -1.329  | -107685.554 | -3632.961 | -38.547 | 68.269827   |
| KOT126          | KOT127   | 87-41-21  | 124-34-15 | 5.97  | -3.389  | 4.919   | -107688.943 | -3628.042 | -34.957 | 118.481776  |
| KOT127          | C203M    | 92-19-48  | 36-54-03  | 2.69  | 2.155   | 1.618   | -107686.788 | -3626.424 | -28.420 | -61.246010  |
| C203M           | G750-005 | 180-04-22 | 36-58-25  | 16.57 | 13.238  | 9.966   | -107673.550 | -3616.458 | -16.836 | -222.880155 |
| G750-005        | KOT180   | 179-58-55 | 36-57-20  | 8.75  | 6.998   | 5.265   | -107666.552 | -3611.193 | -1.606  | -11.236905  |
| KOT180          | KOT181K  | 86-06-41  | 303-04-01 | 2.18  | 1.191   | -1.829  | -107665.361 | -3613.023 | 1.829   | 2.178864    |
| 合計              |          |           |           |       |         |         |             |           | 倍面積     | 139.391530  |
|                 |          |           |           |       |         |         |             |           | 面積      | 69.69       |

面積 (倍横距法) 計算書

| 地番 = 6-4<br>器械点 | 視準点      | 内角        | 方向角       | 距離    | 緯距      | 経距     | X座標         | Y座標       | 倍横距     | 倍面積         |
|-----------------|----------|-----------|-----------|-------|---------|--------|-------------|-----------|---------|-------------|
| KOT182          | G780-012 | 93-57-21  | 217-01-22 | 2.62  | -2.092  | -1.578 | -107665.376 | -3617.791 | -1.578  | 3.300280    |
| G780-012        | G780-013 | 179-56-37 | 216-57-59 | 16.15 | -12.904 | -9.712 | -107678.280 | -3627.503 | -12.867 | 166.039871  |
| G780-013        | KOT134K  | 179-54-55 | 216-52-54 | 6.87  | -5.503  | -4.129 | -107683.783 | -3631.632 | -26.708 | 146.962118  |
| KOT134K         | C54K1    | 87-34-27  | 124-27-21 | 3.77  | -2.133  | 3.109  | -107685.916 | -3628.523 | -27.728 | 59.152210   |
| C54K1           | KOT181K  | 92-33-48  | 37-01-09  | 25.74 | 20.554  | 15.500 | -107665.361 | -3613.023 | -9.119  | -187.429546 |
| KOT181K         | KOT182   | 86-02-52  | 303-04-01 | 3.80  | 2.077   | -3.191 | -107663.284 | -3616.213 | 3.191   | 6.627608    |
| 合計              |          |           |           |       |         |        |             |           | 倍面積     | 194.652541  |
|                 |          |           |           |       |         |        |             |           | 面積      | 97.32       |

面積 (倍横距法) 計算書

地番 = 6-5  
器械点

| 器械点      | 視準点      | 内角        | 方向角       | 距離   | 緯距     | 経距     | X座標         | Y座標       | 倍横距    | 倍面積        |
|----------|----------|-----------|-----------|------|--------|--------|-------------|-----------|--------|------------|
| G750-005 | G750-006 | 43-01-24  | 79-58-44  | 4.02 | 0.701  | 3.967  | -107672.849 | -3612.491 | 3.967  | 2.780867   |
| G750-006 | G760-021 | 137-01-08 | 36-59-52  | 5.99 | 4.791  | 3.610  | -107668.058 | -3608.881 | 11.544 | 55.307304  |
| G760-021 | KOT180   | 86-04-09  | 303-04-01 | 2.75 | 1.506  | -2.312 | -107666.552 | -3611.193 | 12.842 | 19.333805  |
| KOT180   | G750-005 | 93-53-19  | 216-57-20 | 8.75 | -6.998 | -5.265 | -107673.550 | -3616.458 | 5.265  | -36.839108 |
| 合計       |          |           |           |      |        |        |             |           | 倍面積    | 40.582868  |
|          |          |           |           |      |        |        |             |           | 面積     | 20.29      |



## 面積 (倍横距法) 計算書

| 地番 = 6-6<br>器械点 | 視準点       | 内角        | 方向角       | 距離    | 緯距      | 経距      | X座標         | Y座標       | 倍横距      | 倍面積          |
|-----------------|-----------|-----------|-----------|-------|---------|---------|-------------|-----------|----------|--------------|
| G760-007        | G760-008  | 90-26-21  | 303-08-50 | 15.48 | 8.469   | -12.968 | -107735.091 | -3506.258 | -12.968  | -109.825992  |
| G760-008        | G760-54M  | 179-59-55 | 303-08-45 | 6.89  | 3.768   | -5.770  | -107731.323 | -3512.028 | -31.706  | -119.468208  |
| G760-54M        | G760-52M  | 180-00-01 | 303-08-46 | 12.50 | 6.836   | -10.468 | -107724.487 | -3522.496 | -47.944  | -327.745184  |
| G760-52M        | G760-009  | 179-59-46 | 303-08-32 | 16.64 | 9.102   | -13.940 | -107715.385 | -3536.436 | -72.352  | -658.547904  |
| G760-009        | G760-011  | 179-52-21 | 303-00-53 | 8.37  | 4.564   | -7.024  | -107710.821 | -3543.460 | -93.316  | -425.894224  |
| G760-011        | G760-012  | 180-19-42 | 303-20-35 | 8.42  | 4.630   | -7.037  | -107706.191 | -3550.497 | -107.377 | -497.155510  |
| G760-012        | G760-013  | 179-45-50 | 303-06-25 | 6.97  | 3.810   | -5.843  | -107702.381 | -3556.340 | -120.257 | -458.179170  |
| G760-013        | G760-014  | 180-18-04 | 303-24-29 | 7.55  | 4.158   | -6.304  | -107698.223 | -3562.644 | -132.404 | -550.535832  |
| G760-014        | G760-016  | 179-43-48 | 303-08-17 | 13.99 | 7.650   | -11.718 | -107690.573 | -3574.362 | -150.426 | -1150.758900 |
| G760-016        | G760-50M  | 180-00-39 | 303-08-56 | 0.99  | 0.546   | -0.836  | -107690.027 | -3575.198 | -162.980 | -88.987080   |
| G760-50M        | G760-017  | 179-59-58 | 303-08-54 | 9.50  | 5.198   | -7.959  | -107684.829 | -3583.157 | -171.775 | -892.886450  |
| G760-017        | G760-018  | 180-00-21 | 303-09-15 | 8.42  | 4.606   | -7.051  | -107680.223 | -3590.208 | -186.785 | -860.331710  |
| G760-018        | G760-020  | 179-56-45 | 303-06-00 | 10.93 | 5.972   | -9.161  | -107674.251 | -3599.369 | -202.997 | -1212.298084 |
| G760-020        | G760-021  | 179-58-01 | 303-04-01 | 11.35 | 6.193   | -9.512  | -107668.058 | -3608.881 | -221.670 | -1372.802310 |
| G760-021        | G750-006  | 93-55-51  | 216-59-52 | 5.99  | -4.791  | -3.610  | -107672.849 | -3612.491 | -234.792 | 1124.888472  |
| G750-006        | G750-007  | 86-08-43  | 123-08-35 | 5.80  | -3.176  | 4.864   | -107676.025 | -3607.627 | -233.538 | 741.716688   |
| G750-007        | G750-012  | 179-58-59 | 123-07-34 | 10.25 | -5.606  | 8.591   | -107681.631 | -3599.036 | -220.083 | 1233.785298  |
| G750-012        | G750-014  | 180-01-13 | 123-08-47 | 6.60  | -3.612  | 5.531   | -107685.243 | -3593.505 | -205.961 | 743.931132   |
| G750-014        | G750-015M | 179-57-58 | 123-06-45 | 6.60  | -3.608  | 5.532   | -107688.851 | -3587.973 | -194.898 | 703.191984   |
| G750-015M       | G750-016  | 180-05-46 | 123-12-31 | 6.50  | -3.561  | 5.440   | -107692.412 | -3582.533 | -183.926 | 654.960486   |
| G750-016        | G750-017  | 179-55-28 | 123-07-59 | 33.54 | -18.334 | 28.089  | -107710.746 | -3554.444 | -150.397 | 2757.378598  |
| G750-017        | G750-018  | 180-03-10 | 123-11-09 | 12.73 | -6.968  | 10.654  | -107717.714 | -3543.790 | -111.654 | 778.005072   |
| G750-018        | G750-029  | 179-57-52 | 123-09-01 | 29.14 | -15.938 | 24.402  | -107733.652 | -3519.388 | -76.598  | 1220.818924  |
| G750-029        | G730-001  | 180-07-18 | 123-16-19 | 10.79 | -5.920  | 9.022   | -107739.572 | -3510.366 | -43.174  | 255.590080   |
| G730-001        | G730-002  | 179-42-34 | 122-58-53 | 6.79  | -3.699  | 5.700   | -107743.271 | -3504.666 | -28.452  | 105.243948   |
| G730-002        | G730-003  | 180-07-38 | 123-06-31 | 9.72  | -5.314  | 8.149   | -107748.585 | -3496.517 | -14.603  | 77.600342    |
| G730-003        | G760-007  | 89-35-58  | 32-42-29  | 5.97  | 5.025   | 3.227   | -107743.560 | -3493.290 | -3.227   | -16.215675   |

面積（倍横距法）計算書

合計

|     |             |
|-----|-------------|
| 倍面積 | 1655.478791 |
| 面積  | 827.73      |

面積 (倍横距法) 計算書

| 地番 = 6-7<br>器械点 | 視準点       | 内角        | 方向角       | 距離    | 緯距      | 経距     | X座標         | Y座標       | 倍横距    | 倍面積        |
|-----------------|-----------|-----------|-----------|-------|---------|--------|-------------|-----------|--------|------------|
| G750-034        | G750-033  | 90-26-13  | 122-55-12 | 8.08  | -4.396  | 6.790  | -107762.991 | -3538.312 | 6.790  | -29.848840 |
| G750-033        | G750-032  | 134-26-07 | 77-21-19  | 4.18  | 0.916   | 4.083  | -107762.075 | -3534.229 | 17.663 | 16.179308  |
| G750-032        | G750-031  | 135-31-16 | 32-52-35  | 10.04 | 8.432   | 5.450  | -107753.643 | -3528.779 | 27.196 | 229.316672 |
| G750-031        | G750-028M | 89-52-21  | 302-44-56 | 11.11 | 6.010   | -9.344 | -107747.633 | -3538.123 | 23.302 | 140.045020 |
| G750-028M       | G750-034  | 89-44-03  | 212-28-59 | 12.99 | -10.962 | -6.979 | -107758.595 | -3545.102 | 6.979  | -76.503798 |
| 合計              |           |           |           |       |         |        |             |           | 倍面積    | 279.188362 |
|                 |           |           |           |       |         |        |             |           | 面積     | 139.59     |

面積 (倍横距法) 計算書

| 地番 = 6-8  |           |          |           |       |         |        |             |           |        |            |  |
|-----------|-----------|----------|-----------|-------|---------|--------|-------------|-----------|--------|------------|--|
| 器械点       | 視準点       | 内角       | 方向角       | 距離    | 緯距      | 経距     | X座標         | Y座標       | 倍横距    | 倍面積        |  |
| G750-035  | G750-034  | 90-25-35 | 122-45-03 | 10.67 | -5.775  | 8.978  | -107758.595 | -3545.102 | 8.978  | -51.847950 |  |
| G750-034  | G750-028M | 89-43-56 | 32-28-59  | 12.99 | 10.962  | 6.979  | -107747.633 | -3538.123 | 24.935 | 273.337470 |  |
| G750-028M | G750-027M | 90-13-13 | 302-42-12 | 10.71 | 5.787   | -9.013 | -107741.846 | -3547.136 | 22.901 | 132.528087 |  |
| G750-027M | G750-035  | 89-37-16 | 212-19-28 | 12.98 | -10.974 | -6.944 | -107752.820 | -3554.080 | 6.944  | -76.203456 |  |
| 合計        |           |          |           |       |         |        |             |           | 倍面積    | 277.814151 |  |
|           |           |          |           |       |         |        |             |           | 面積     | 138.90     |  |

面積 (倍横距法) 計算書

| 地番 = 6-9<br>器械点 | 視準点       | 内角       | 方向角       | 距離    | 緯距      | 経距     | X座標         | Y座標       | 倍横距    | 倍面積        |
|-----------------|-----------|----------|-----------|-------|---------|--------|-------------|-----------|--------|------------|
| G750-036        | G750-035  | 90-19-13 | 122-44-59 | 9.81  | -5.311  | 8.257  | -107752.820 | -3554.080 | 8.257  | -43.852927 |
| G750-035        | G750-027M | 89-34-29 | 32-19-28  | 12.98 | 10.974  | 6.944  | -107741.846 | -3547.136 | 23.458 | 257.428092 |
| G750-027M       | G750-026  | 90-20-54 | 302-40-22 | 9.79  | 5.287   | -8.244 | -107736.559 | -3555.380 | 22.158 | 117.149346 |
| G750-026        | G750-036  | 89-45-24 | 212-25-46 | 12.97 | -10.950 | -6.957 | -107747.509 | -3562.337 | 6.957  | -76.179150 |
| 合計              |           |          |           |       |         |        |             |           | 倍面積    | 254.545361 |
|                 |           |          |           |       |         |        |             |           | 面積     | 127.27     |

面積（倍横距法）計算書

| 地番 = 6-10<br>器械点 | 視準点      | 内角        | 方向角       | 距離    | 緯距      | 経距     | X座標         | Y座標       | 倍横距    | 倍面積        |
|------------------|----------|-----------|-----------|-------|---------|--------|-------------|-----------|--------|------------|
| G750-036         | G750-026 | 89-50-42  | 32-25-46  | 12.97 | 10.950  | 6.957  | -107736.559 | -3555.380 | 6.957  | 76.179150  |
| G750-026         | G750-025 | 89-36-27  | 302-02-13 | 0.38  | 0.204   | -0.326 | -107736.355 | -3555.706 | 13.588 | 2.771952   |
| G750-025         | G750-024 | 181-05-53 | 303-08-06 | 9.50  | 5.196   | -7.960 | -107731.159 | -3563.666 | 5.302  | 27.549192  |
| G750-024         | G750-037 | 89-21-06  | 212-29-12 | 13.06 | -11.017 | -7.015 | -107742.176 | -3570.681 | -9.673 | 106.567441 |
| G750-037         | G750-036 | 90-05-52  | 122-35-04 | 9.90  | -5.333  | 8.344  | -107747.509 | -3562.337 | -8.344 | 44.498552  |
| 合計               |          |           |           |       |         |        |             |           | 倍面積    | 257.566287 |
|                  |          |           |           |       |         |        |             |           | 面積     | 128.78     |

面積 (倍横距法) 計算書

地番 = 6-11

| 器械点      | 視準点      | 内角        | 方向角       | 距離    | 緯距      | 経距     | X座標         | Y座標       | 倍横距     | 倍面積        |
|----------|----------|-----------|-----------|-------|---------|--------|-------------|-----------|---------|------------|
| G750-037 | G750-024 | 89-42-37  | 32-29-12  | 13.06 | 11.017  | 7.015  | -107731.159 | -3563.666 | 7.015   | 77.284255  |
| G750-024 | G750-019 | 89-25-17  | 301-54-29 | 3.43  | 1.815   | -2.915 | -107729.344 | -3566.581 | 11.115  | 20.173725  |
| G750-019 | G750-020 | 180-58-50 | 302-53-19 | 7.27  | 3.951   | -6.110 | -107725.393 | -3572.691 | 2.090   | 8.257590   |
| G750-020 | G750-038 | 89-32-32  | 212-25-51 | 13.02 | -10.992 | -6.984 | -107736.385 | -3579.675 | -11.004 | 120.955968 |
| G750-038 | G750-037 | 90-20-44  | 122-46-35 | 10.69 | -5.791  | 8.994  | -107742.176 | -3570.681 | -8.994  | 52.084254  |
| 合計       |          |           |           |       |         |        |             |           | 倍面積     | 278.755792 |
|          |          |           |           |       |         |        |             |           | 面積      | 139.37     |

面積 (倍横距法) 計算書

地番 = 6-12

| 器械点      | 視準点      | 内角        | 方向角       | 距離    | 緯距      | 経距     | X座標         | Y座標       | 倍横距    | 倍面積        |
|----------|----------|-----------|-----------|-------|---------|--------|-------------|-----------|--------|------------|
| G750-52M | G750-041 | 89-59-39  | 122-31-03 | 0.66  | -0.357  | 0.560  | -107731.733 | -3587.189 | 0.560  | -0.199920  |
| G750-041 | G750-040 | 83-19-09  | 25-50-12  | 0.10  | 0.095   | 0.046  | -107731.638 | -3587.143 | 1.166  | 0.110770   |
| G750-040 | G750-038 | 276-36-19 | 122-26-31 | 8.84  | -4.747  | 7.468  | -107736.385 | -3579.675 | 8.680  | -41.203960 |
| G750-038 | G750-020 | 89-59-20  | 32-25-51  | 13.02 | 10.992  | 6.984  | -107725.393 | -3572.691 | 23.132 | 254.266944 |
| G750-020 | G750-021 | 90-31-54  | 302-57-45 | 9.48  | 5.158   | -7.954 | -107720.235 | -3580.645 | 22.162 | 114.311596 |
| G750-021 | G750-52M | 89-33-39  | 212-31-24 | 13.21 | -11.141 | -7.104 | -107731.376 | -3587.749 | 7.104  | -79.145664 |
| 合計       |          |           |           |       |         |        |             |           | 倍面積    | 248.139766 |
|          |          |           |           |       |         |        |             |           | 面積     | 124.06     |



面積 (倍横距法) 計算書

地番 = 6-13

| 器械点      | 視準点      | 内角        | 方向角       | 距離    | 緯距      | 経距     | X座標         | Y座標       | 倍横距    | 倍面積         |
|----------|----------|-----------|-----------|-------|---------|--------|-------------|-----------|--------|-------------|
| G750-042 | G750-52M | 89-45-03  | 122-31-25 | 3.93  | -2.117  | 3.320  | -107731.376 | -3587.749 | 3.320  | -7.028440   |
| G750-52M | G750-021 | 89-59-59  | 32-31-24  | 13.21 | 11.141  | 7.104  | -107720.235 | -3580.645 | 13.744 | 153.121904  |
| G750-021 | G750-022 | 180-18-26 | 32-49-50  | 3.71  | 3.123   | 2.015  | -107717.112 | -3578.630 | 22.863 | 71.401149   |
| G750-022 | G750-023 | 89-36-12  | 302-26-02 | 3.88  | 2.083   | -3.278 | -107715.029 | -3581.908 | 21.600 | 44.992800   |
| G750-023 | G750-042 | 90-20-20  | 212-46-22 | 16.92 | -14.230 | -9.161 | -107729.259 | -3591.069 | 9.161  | -130.361030 |
| 合計       |          |           |           |       |         |        |             |           | 倍面積    | 132.126383  |
|          |          |           |           |       |         |        |             |           | 面積     | 66.06       |

面積 (倍横距法) 計算書

| 地番 = 6-14<br>器械点 | 視準点      | 内角       | 方向角       | 距離    | 緯距      | 経距     | X座標         | Y座標       | 倍横距    | 倍面積         |
|------------------|----------|----------|-----------|-------|---------|--------|-------------|-----------|--------|-------------|
| G750-50M         | G750-042 | 89-59-35 | 122-40-00 | 3.86  | -2.087  | 3.255  | -107729.259 | -3591.069 | 3.255  | -6.793185   |
| G750-042         | G750-023 | 90-06-22 | 32-46-22  | 16.92 | 14.230  | 9.161  | -107715.029 | -3581.908 | 15.671 | 222.998330  |
| G750-023         | G750-51M | 89-46-30 | 302-32-52 | 3.89  | 2.096   | -3.284 | -107712.933 | -3585.192 | 21.548 | 45.164608   |
| G750-51M         | G750-50M | 90-07-33 | 212-40-25 | 16.91 | -14.239 | -9.132 | -107727.172 | -3594.324 | 9.132  | -130.030548 |
| 合計               |          |          |           |       |         |        |             |           | 倍面積    | 131.339205  |
|                  |          |          |           |       |         |        |             |           | 面積     | 65.66       |

面積 (倍横距法) 計算書

| 地番 = 6-15 |           | 内角       | 方向角       | 距離    | 緯距      | 経距     | X座標         | Y座標       | 倍横距    | 倍面積         |
|-----------|-----------|----------|-----------|-------|---------|--------|-------------|-----------|--------|-------------|
| 器械点       | 視準点       |          |           |       |         |        |             |           |        |             |
| G750-043M | G750-50M  | 89-56-50 | 122-40-21 | 7.77  | -4.198  | 6.546  | -107727.172 | -3594.324 | 6.546  | -27.480108  |
| G750-50M  | G750-51M  | 90-00-04 | 32-40-25  | 16.91 | 14.239  | 9.132  | -107712.933 | -3585.192 | 22.224 | 316.447536  |
| G750-51M  | G750-011M | 89-52-41 | 302-33-06 | 7.76  | 4.176   | -6.542 | -107708.757 | -3591.734 | 24.814 | 103.623264  |
| G750-011M | G750-043M | 90-10-25 | 212-43-31 | 16.89 | -14.217 | -9.136 | -107722.974 | -3600.870 | 9.136  | -129.886512 |
| 合計        |           |          |           |       |         |        |             |           | 倍面積    | 262.704180  |
|           |           |          |           |       |         |        |             |           | 面積     | 131.35      |

面積 (倍横距法) 計算書

地番 = 6-16

| 器械点       | 視準点       | 内角        | 方向角       | 距離    | 緯距      | 経距     | X座標         | Y座標       | 倍横距    | 倍面積         |
|-----------|-----------|-----------|-----------|-------|---------|--------|-------------|-----------|--------|-------------|
| G750-044  | G750-043M | 90-03-23  | 122-43-37 | 15.54 | -8.404  | 13.077 | -107722.974 | -3600.870 | 13.077 | -109.899108 |
| G750-043M | G750-011M | 89-59-54  | 32-43-31  | 16.89 | 14.217  | 9.136  | -107708.757 | -3591.734 | 35.290 | 501.717930  |
| G750-011M | G750-011  | 89-49-41  | 302-33-12 | 1.23  | 0.662   | -1.037 | -107708.095 | -3592.771 | 43.389 | 28.723518   |
| G750-011  | G750-010  | 180-06-55 | 302-40-07 | 6.50  | 3.510   | -5.474 | -107704.585 | -3598.245 | 36.878 | 129.441780  |
| G750-010  | G750-009  | 179-43-12 | 302-23-19 | 6.60  | 3.539   | -5.579 | -107701.046 | -3603.824 | 25.825 | 91.394675   |
| G750-009  | G750-008  | 178-52-51 | 301-16-10 | 1.22  | 0.634   | -1.044 | -107700.412 | -3604.868 | 19.202 | 12.174068   |
| G750-008  | G750-044  | 91-24-04  | 212-40-14 | 16.81 | -14.158 | -9.079 | -107714.570 | -3613.947 | 9.079  | -128.540482 |
| 合計        |           |           |           |       |         |        |             |           | 倍面積    | 525.012381  |
|           |           |           |           |       |         |        |             |           | 面積     | 262.50      |

面積 (倍横距法) 計算書

地番 = 6-17

| 器械点       | 視準点       | 内角        | 方向角       | 距離    | 緯距      | 経距     | X座標         | Y座標       | 倍横距    | 倍面積         |
|-----------|-----------|-----------|-----------|-------|---------|--------|-------------|-----------|--------|-------------|
| G750-045M | G750-044  | 89-49-52  | 122-41-18 | 15.54 | -8.396  | 13.084 | -107714.570 | -3613.947 | 13.084 | -109.853264 |
| G750-044  | G750-008  | 89-58-56  | 32-40-14  | 16.81 | 14.158  | 9.079  | -107700.412 | -3604.868 | 35.247 | 499.027026  |
| G750-008  | G750-013  | 90-35-40  | 303-15-54 | 5.38  | 2.952   | -4.500 | -107697.460 | -3609.368 | 39.826 | 117.566352  |
| G750-013  | G750-004  | 179-24-19 | 302-40-13 | 10.11 | 5.459   | -8.513 | -107692.001 | -3617.881 | 26.813 | 146.372167  |
| G750-004  | G750-003  | 89-16-38  | 211-56-51 | 0.21  | -0.178  | -0.111 | -107692.179 | -3617.992 | 18.189 | -3.237642   |
| G750-003  | G750-045M | 180-54-35 | 212-51-26 | 16.66 | -13.995 | -9.039 | -107706.174 | -3627.031 | 9.039  | -126.500805 |
| 合計        |           |           |           |       |         |        |             |           | 倍面積    | 523.373834  |
|           |           |           |           |       |         |        |             |           | 面積     | 261.68      |

面積 (倍横距法) 計算書

地番 = 6-18

| 器械点       | 視準点       | 内角        | 方向角       | 距離    | 緯距     | 経距     | X座標         | Y座標       | 倍横距    | 倍面積        |
|-----------|-----------|-----------|-----------|-------|--------|--------|-------------|-----------|--------|------------|
| G750-001  | G750-046  | 134-47-11 | 171-41-14 | 3.99  | -3.949 | 0.577  | -107701.650 | -3634.041 | 0.577  | -2.278573  |
| G750-046  | G750-045M | 131-08-58 | 122-50-12 | 8.34  | -4.524 | 7.010  | -107706.174 | -3627.031 | 8.164  | -36.933936 |
| G750-045M | G750-003  | 90-01-14  | 32-51-26  | 16.66 | 13.995 | 9.039  | -107692.179 | -3617.992 | 24.213 | 338.860935 |
| G750-003  | C203M     | 89-44-08  | 302-35-34 | 10.00 | 5.391  | -8.432 | -107686.788 | -3626.424 | 24.820 | 133.804620 |
| C203M     | KOT127    | 94-18-29  | 216-54-03 | 2.69  | -2.155 | -1.618 | -107688.943 | -3628.042 | 14.770 | -31.829142 |
| KOT127    | G750-001  | 180-00-00 | 216-54-03 | 10.95 | -8.758 | -6.576 | -107697.701 | -3634.618 | 6.576  | -57.591981 |
| 合計        |           |           |           |       |        |        |             |           | 倍面積    | 344.031923 |
|           |           |           |           |       |        |        |             |           | 面積     | 172.01     |

面積 (倍横距法) 計算書

| 地番 = 6-19<br>器械点 | 視準点      | 内角        | 方向角       | 距離    | 緯距      | 経距     | X座標         | Y座標       | 倍横距    | 倍面積         |
|------------------|----------|-----------|-----------|-------|---------|--------|-------------|-----------|--------|-------------|
| C203M            | G750-003 | 85-37-09  | 122-35-34 | 10.00 | -5.391  | 8.432  | -107692.179 | -3617.992 | 8.432  | -45.456912  |
| G750-003         | G750-004 | 89-21-17  | 31-56-51  | 0.21  | 0.178   | 0.111  | -107692.001 | -3617.881 | 16.975 | 3.021550    |
| G750-004         | G750-007 | 180-44-47 | 32-41-38  | 18.98 | 15.976  | 10.254 | -107676.025 | -3607.627 | 27.340 | 436.783840  |
| G750-007         | G750-006 | 90-26-57  | 303-08-35 | 5.80  | 3.176   | -4.864 | -107672.849 | -3612.491 | 32.730 | 103.950480  |
| G750-006         | G750-005 | 136-50-09 | 259-58-44 | 4.02  | -0.701  | -3.967 | -107673.550 | -3616.458 | 23.899 | -16.753199  |
| G750-005         | C203M    | 136-59-41 | 216-58-25 | 16.57 | -13.238 | -9.966 | -107686.788 | -3626.424 | 9.966  | -131.929908 |
| 合計               |          |           |           |       |         |        |             |           | 倍面積    | 349.615851  |
|                  |          |           |           |       |         |        |             |           | 面積     | 174.80      |

面積（倍横距法）計算書

| 地番 = 6-20<br>器械点 | 視準点      | 内角       | 方向角       | 距離    | 緯距      | 経距      | X座標         | Y座標       | 倍横距    | 倍面積         |
|------------------|----------|----------|-----------|-------|---------|---------|-------------|-----------|--------|-------------|
| G750-004         | G750-013 | 89-58-35 | 122-40-13 | 10.11 | -5.459  | 8.513   | -107697.460 | -3609.368 | 8.513  | -46.472467  |
| G750-013         | G750-012 | 90-27-48 | 33-08-01  | 18.90 | 15.829  | 10.332  | -107681.631 | -3599.036 | 27.358 | 433.049782  |
| G750-012         | G750-007 | 89-59-33 | 303-07-34 | 10.25 | 5.606   | -8.591  | -107676.025 | -3607.627 | 29.099 | 163.128994  |
| G750-007         | G750-004 | 89-34-04 | 212-41-38 | 18.98 | -15.976 | -10.254 | -107692.001 | -3617.881 | 10.254 | -163.817904 |
| 合計               |          |          |           |       |         |         |             |           | 倍面積    | 385.888405  |
|                  |          |          |           |       |         |         |             |           | 面積     | 192.94      |



面積 (倍横距法) 計算書

| 地番 = 6-21 |          |           |           |       |         |         |             |           |        |             |  |
|-----------|----------|-----------|-----------|-------|---------|---------|-------------|-----------|--------|-------------|--|
| 器械点       | 視準点      | 内角        | 方向角       | 距離    | 緯距      | 経距      | X座標         | Y座標       | 倍横距    | 倍面積         |  |
| G750-013  | G750-008 | 90-07-53  | 123-15-54 | 5.38  | -2.952  | 4.500   | -107700.412 | -3604.868 | 4.500  | -13.284000  |  |
| G750-008  | G750-009 | 178-00-16 | 121-16-10 | 1.22  | -0.634  | 1.044   | -107701.046 | -3603.824 | 10.044 | -6.367896   |  |
| G750-009  | G750-014 | 91-52-27  | 33-08-37  | 18.87 | 15.803  | 10.319  | -107685.243 | -3593.505 | 21.407 | 338.294821  |  |
| G750-014  | G750-012 | 90-00-10  | 303-08-47 | 6.60  | 3.612   | -5.531  | -107681.631 | -3599.036 | 26.195 | 94.616340   |  |
| G750-012  | G750-013 | 89-59-14  | 213-08-01 | 18.90 | -15.829 | -10.332 | -107697.460 | -3609.368 | 10.332 | -163.545228 |  |
| 合計        |          |           |           |       |         |         |             |           | 倍面積    | 249.714037  |  |
|           |          |           |           |       |         |         |             |           | 面積     | 124.85      |  |

面積 (倍横距法) 計算書

| 地番 = 6-22 |           |          |           |       |         |         |             |           |        |             |
|-----------|-----------|----------|-----------|-------|---------|---------|-------------|-----------|--------|-------------|
| 器械点       | 視準点       | 内角       | 方向角       | 距離    | 緯距      | 経距      | X座標         | Y座標       | 倍横距    | 倍面積         |
| G750-009  | G750-010  | 89-14-42 | 122-23-19 | 6.60  | -3.539  | 5.579   | -107704.585 | -3598.245 | 5.579  | -19.744081  |
| G750-010  | G750-015M | 90-45-00 | 33-08-19  | 18.79 | 15.734  | 10.272  | -107688.851 | -3587.973 | 21.430 | 337.179620  |
| G750-015M | G750-014  | 89-58-26 | 303-06-45 | 6.60  | 3.608   | -5.532  | -107685.243 | -3593.505 | 26.170 | 94.421360   |
| G750-014  | G750-009  | 90-01-52 | 213-08-37 | 18.87 | -15.803 | -10.319 | -107701.046 | -3603.824 | 10.319 | -163.071157 |
| 合計        |           |          |           |       |         |         |             |           | 倍面積    | 248.785742  |
|           |           |          |           |       |         |         |             |           | 面積     | 124.39      |

面積 (倍横距法) 計算書

| 地番 = 6-23 |           |          |           |       |         |         |             |           |        |             |  |
|-----------|-----------|----------|-----------|-------|---------|---------|-------------|-----------|--------|-------------|--|
| 器械点       | 視準点       | 内角       | 方向角       | 距離    | 緯距      | 経距      | X座標         | Y座標       | 倍横距    | 倍面積         |  |
| G750-010  | G750-011  | 89-31-48 | 122-40-07 | 6.50  | -3.510  | 5.474   | -107708.095 | -3592.771 | 5.474  | -19.213740  |  |
| G750-011  | G750-016  | 90-28-06 | 33-08-13  | 18.72 | 15.683  | 10.238  | -107692.412 | -3582.533 | 21.186 | 332.260038  |  |
| G750-016  | G750-015M | 90-04-18 | 303-12-31 | 6.50  | 3.561   | -5.440  | -107688.851 | -3587.973 | 25.984 | 92.529024   |  |
| G750-015M | G750-010  | 89-55-48 | 213-08-19 | 18.79 | -15.734 | -10.272 | -107704.585 | -3598.245 | 10.272 | -161.619648 |  |
| 合計        |           |          |           |       |         |         |             |           | 倍面積    | 243.955674  |  |
|           |           |          |           |       |         |         |             |           | 面積     | 121.97      |  |

面積 (倍横距法) 計算書

| 地番 = 6-24 |           | 内角        | 方向角       | 距離    | 緯距      | 経距      | X座標         | Y座標       | 倍横距    | 倍面積         |
|-----------|-----------|-----------|-----------|-------|---------|---------|-------------|-----------|--------|-------------|
| 器械点       | 視準点       |           |           |       |         |         |             |           |        |             |
| G750-011  | G750-011M | 89-24-59  | 122-33-12 | 1.23  | -0.662  | 1.037   | -107708.757 | -3591.734 | 1.037  | -0.686494   |
| G750-011M | G750-51M  | 179-59-54 | 122-33-06 | 7.76  | -4.176  | 6.542   | -107712.933 | -3585.192 | 8.616  | -35.980416  |
| G750-51M  | G750-023  | 179-59-46 | 122-32-52 | 3.89  | -2.096  | 3.284   | -107715.029 | -3581.908 | 18.442 | -38.654432  |
| G750-023  | G750-022  | 179-53-10 | 122-26-02 | 3.88  | -2.083  | 3.278   | -107717.112 | -3578.630 | 25.004 | -52.083332  |
| G750-022  | G750-021  | 270-23-48 | 212-49-50 | 3.71  | -3.123  | -2.015  | -107720.235 | -3580.645 | 26.267 | -82.031841  |
| G750-021  | G750-020  | 90-07-55  | 122-57-45 | 9.48  | -5.158  | 7.954   | -107725.393 | -3572.691 | 32.206 | -166.118548 |
| G750-020  | G750-019  | 179-55-34 | 122-53-19 | 7.27  | -3.951  | 6.110   | -107729.344 | -3566.581 | 46.270 | -182.812770 |
| G750-019  | G750-017  | 90-14-23  | 33-07-42  | 22.20 | 18.598  | 12.137  | -107710.746 | -3554.444 | 64.517 | 1199.887166 |
| G750-017  | G750-016  | 90-00-17  | 303-07-59 | 33.54 | 18.334  | -28.089 | -107692.412 | -3582.533 | 48.565 | 890.390710  |
| G750-016  | G750-011  | 90-00-14  | 213-08-13 | 18.72 | -15.683 | -10.238 | -107708.095 | -3592.771 | 10.238 | -160.562554 |
| 合計        |           |           |           |       |         |         |             |           | 倍面積    | 1371.347489 |
|           |           |           |           |       |         |         |             |           | 面積     | 685.67      |

面積 (倍横距法) 計算書

地番 = 6-25

| 器械点      | 視準点      | 内角        | 方向角       | 距離    | 緯距      | 経距      | X座標         | Y座標       | 倍横距    | 倍面積         |
|----------|----------|-----------|-----------|-------|---------|---------|-------------|-----------|--------|-------------|
| G750-019 | G750-024 | 88-46-47  | 121-54-29 | 3.43  | -1.815  | 2.915   | -107731.159 | -3563.666 | 2.915  | -5.290725   |
| G750-024 | G750-025 | 181-13-37 | 123-08-06 | 9.50  | -5.196  | 7.960   | -107736.355 | -3555.706 | 13.790 | -71.652840  |
| G750-025 | G750-018 | 89-27-11  | 32-35-17  | 22.12 | 18.641  | 11.916  | -107717.714 | -3543.790 | 33.666 | 627.567906  |
| G750-018 | G750-017 | 90-35-52  | 303-11-09 | 12.73 | 6.968   | -10.654 | -107710.746 | -3554.444 | 34.928 | 243.378304  |
| G750-017 | G750-019 | 89-56-33  | 213-07-42 | 22.20 | -18.598 | -12.137 | -107729.344 | -3566.581 | 12.137 | -225.723926 |
| 合計       |          |           |           |       |         |         |             |           | 倍面積    | 568.278719  |
|          |          |           |           |       |         |         |             |           | 面積     | 284.13      |

面積 (倍横距法) 計算書

| 地番 = 6-26 |           |           |           |       |         |         |             |           |        |             |  |
|-----------|-----------|-----------|-----------|-------|---------|---------|-------------|-----------|--------|-------------|--|
| 器械点       | 視準点       | 内角        | 方向角       | 距離    | 緯距      | 経距      | X座標         | Y座標       | 倍横距    | 倍面積         |  |
| G750-025  | G750-026  | 89-26-56  | 122-02-13 | 0.38  | -0.204  | 0.326   | -107736.559 | -3555.380 | 0.326  | -0.066504   |  |
| G750-026  | G750-027M | 180-38-09 | 122-40-22 | 9.79  | -5.287  | 8.244   | -107741.846 | -3547.136 | 8.896  | -47.033152  |  |
| G750-027M | G750-028M | 180-01-50 | 122-42-12 | 10.71 | -5.787  | 9.013   | -107747.633 | -3538.123 | 26.153 | -151.347411 |  |
| G750-028M | G750-031  | 180-02-44 | 122-44-56 | 11.11 | -6.010  | 9.344   | -107753.643 | -3528.779 | 44.510 | -267.505100 |  |
| G750-031  | G750-030  | 90-09-17  | 32-54-13  | 19.17 | 16.100  | 10.417  | -107737.543 | -3518.362 | 64.271 | 1034.763100 |  |
| G750-030  | G750-029  | 132-19-28 | 345-13-41 | 4.02  | 3.891   | -1.026  | -107733.652 | -3519.388 | 73.662 | 286.618842  |  |
| G750-029  | G750-018  | 137-55-20 | 303-09-01 | 29.14 | 15.938  | -24.402 | -107717.714 | -3543.790 | 48.234 | 768.753492  |  |
| G750-018  | G750-025  | 89-26-16  | 212-35-17 | 22.12 | -18.641 | -11.916 | -107736.355 | -3555.706 | 11.916 | -222.126156 |  |
| 合計        |           |           |           |       |         |         |             |           | 倍面積    | 1402.057111 |  |
|           |           |           |           |       |         |         |             |           | 面積     | 701.02      |  |