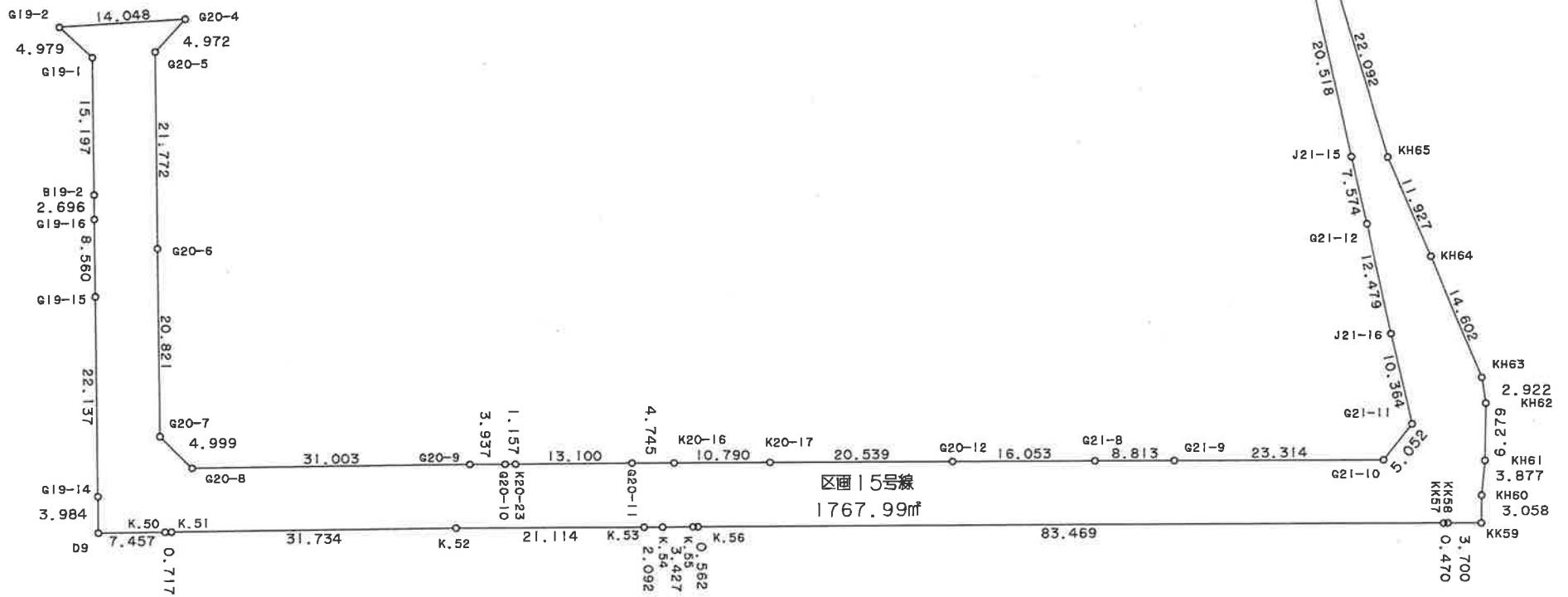
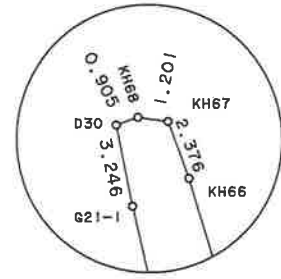
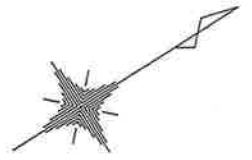


* * 面積計算 (倍横距法) * *

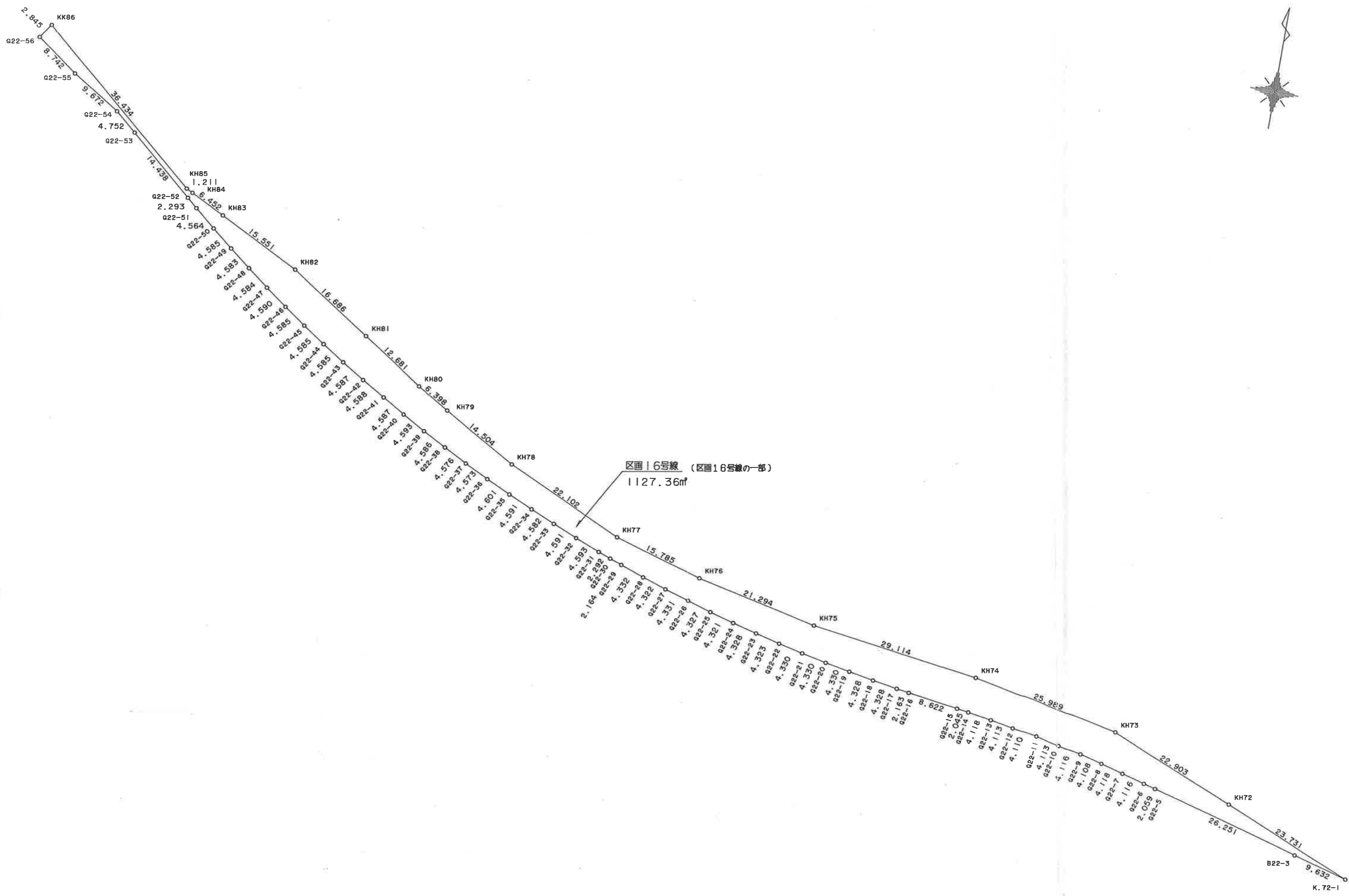
地 器械点	番 : 視準点	区画10号線 内角	方向角	距離	緯距	經距	X座標	Y座標	倍横距	倍面積
G5-2	G5-3	43-12-55	166-32-35	5.157	-5.015	1.200	-111093.285	-4421.694	1.200	-6.018000
G5-3	G5-4	225-39-08	212-11-43	20.394	-17.258	-10.866	-111110.543	-4432.560	-8.466	146.106228
G5-4	G5-5	179-50-58	212-02-41	20.738	-17.578	-11.003	-111128.121	-4443.563	-30.335	533.228630
G5-5	G5-6	225-14-16	257-16-57	4.942	-1.088	-4.821	-111129.209	-4448.384	-46.159	50.220992
G5-6	G5-7	224-41-29	301-58-26	10.048	5.321	-8.524	-111123.888	-4456.908	-59.504	-316.620784
G5-7	K.164	180-03-39	302-02-05	26.096	13.842	-22.122	-111110.046	-4479.030	-90.150	-1247.856300
K.164	D21	179-57-25	301-59-30	26.510	14.045	-22.484	-111096.001	-4501.514	-134.756	-1892.648020
D21	G4-15	90-01-31	212-01-01	10.534	-8.932	-5.585	-111104.933	-4507.099	-162.825	1454.352900
G4-15	G4-14	45-07-11	77-08-12	4.977	1.108	4.852	-111103.825	-4502.247	-163.558	-181.222264
G4-14	G4-13	224-51-37	121-59-49	13.799	-7.312	11.703	-111111.137	-4490.544	-147.003	1074.885936
G4-13	G4-12	180-01-01	122-00-50	19.846	-10.521	16.828	-111121.658	-4473.716	-118.472	1246.443912
G4-12	KE4-3	180-00-51	122-01-41	19.461	-10.321	16.499	-111131.979	-4457.217	-85.145	878.781545
KE4-3	G4-10	179-59-01	122-00-42	16.561	-8.779	14.043	-111140.758	-4443.174	-54.603	479.359737
G4-10	K4-9	90-00-02	32-00-44	12.579	10.666	6.668	-111130.092	-4436.506	-33.892	-361.492072
K4-9	K4-8	179-59-57	32-00-41	11.323	9.601	6.002	-111120.491	-4430.504	-21.222	-203.752422
K4-8	G4-7-1	180-00-24	32-01-05	9.021	7.649	4.783	-111112.842	-4425.721	-10.437	-79.832613
G4-7-1	G4-6	180-00-12	32-01-17	18.526	15.707	9.823	-111097.135	-4415.898	4.169	65.482483
G4-6	G4-5	225-22-38	77-23-55	4.959	1.082	4.840	-111096.053	-4411.058	18.832	20.376224
G4-5	G5-2	45-55-45	303-19-40	14.166	7.783	-11.836	-111088.270	-4422.894	11.836	92.119588
									倍面積	1751.915700
									面積	875.9578500
									坪数	264.97



* * 面積計算 (倍横距法) * *

地 器械点	番 : 視準点	区画15号線 内角	方向角	距離	緯距	経距	X座標	Y座標	倍横距	倍面積
G19-2	G19-1	46-35-05	75-39-44	4.979	1.233	4.824	-110742.908	-4556.052	4.824	5.947992
G19-1	B19-2	226-22-09	122-01-53	15.197	-8.060	12.883	-110750.968	-4543.169	22.531	-181.599860
B19-2	G19-16	179-59-47	122-01-40	2.696	-1.430	2.286	-110752.398	-4540.883	37.700	-53.911000
G19-16	G19-15	179-53-07	121-54-47	8.560	-4.525	7.266	-110756.923	-4533.617	47.252	-213.815300
G19-15	G19-14	180-07-04	122-01-51	22.137	-11.741	18.767	-110768.664	-4514.850	73.285	-860.439185
G19-14	D9	179-57-50	121-59-41	3.984	-2.111	3.379	-110770.775	-4511.471	95.431	-201.454841
D9	K.50	89-59-02	31-58-43	7.457	6.325	3.949	-110764.450	-4507.522	102.759	649.950675
K.50	K.51	179-55-00	31-53-43	0.717	0.609	0.379	-110763.841	-4507.143	107.087	65.215983
K.51	K.52	180-07-16	32-00-59	31.734	26.907	16.824	-110736.934	-4490.319	124.290	3344.271030
K.52	K.53	180-33-00	32-33-59	21.114	17.794	11.365	-110719.140	-4478.954	152.479	2713.211326
K.53	K.54	179-48-07	32-22-06	2.092	1.767	1.120	-110717.373	-4477.834	164.964	291.491388
K.54	K.55	179-59-10	32-21-16	3.427	2.895	1.834	-110714.478	-4476.000	167.918	486.122610
K.55	K.56	180-00-26	32-21-42	0.562	0.475	0.301	-110714.003	-4475.699	170.053	80.775175
K.56	KK57	180-00-36	32-22-18	83.469	70.497	44.690	-110643.506	-4431.009	215.044	15159.956868
KK57	KK58	179-09-22	31-31-40	0.470	0.401	0.246	-110643.105	-4430.763	259.980	104.251980
KK58	KK59	180-57-19	32-28-59	3.700	3.121	1.987	-110639.984	-4428.776	262.213	818.366773
KK59	KH60	90-24-43	302-53-42	3.058	1.661	-2.568	-110638.323	-4431.344	261.632	434.570752
KH60	KH61	185-25-24	308-19-06	3.877	2.404	-3.042	-110635.919	-4434.386	256.022	615.476888
KH61	KH62	174-59-13	303-18-19	6.279	3.448	-5.248	-110632.471	-4439.634	247.732	854.179936
KH62	KH63	170-22-57	293-41-16	2.922	1.174	-2.676	-110631.297	-4442.310	239.808	281.534592
KH63	KH64	166-17-38	279-58-54	14.602	2.531	-14.381	-110628.766	-4456.691	222.751	563.782781
KH64	KH65	179-08-11	279-07-05	11.927	1.890	-11.776	-110628.876	-4468.467	196.594	371.562660
KH65	KH66	186-47-30	285-54-35	22.092	6.056	-21.246	-110620.820	-4489.713	163.572	990.592032
KH66	KH67	176-33-32	282-28-07	2.376	0.513	-2.320	-110620.307	-4492.033	140.006	71.823078
KH67	KH68	118-10-27	220-38-34	1.201	-0.911	-0.782	-110621.218	-4492.815	136.904	-124.719544
KH68	D30	151-59-45	192-38-19	0.905	-0.883	-0.198	-110622.101	-4493.013	135.924	-120.020892
D30	G21-1	98-36-20	111-14-39	3.246	-1.176	3.025	-110623.277	-4489.988	138.751	-163.171176

器械点	視準点	内角	方向角	距離	緯距	經距	X座標	Y座標	倍橫距	倍面積
G21-1	J21-15	178-42-35	109-57-14	20.518	-7.002	19.286	-110630.279	-4470.702	161.062	-1127.756124
J21-15	G21-12	179-31-09	109-28-23	7.574	-2.525	7.141	-110632.804	-4463.561	187.489	-473.409725
G21-12	J21-16	180-31-02	109-59-25	12.479	-4.266	11.727	-110637.070	-4451.834	206.357	-880.318962
J21-16	G21-11	179-45-53	109-45-18	10.364	-3.503	9.754	-110640.573	-4442.080	227.838	-798.116514
G21-11	G21-10	231-37-38	161-22-56	5.052	-4.788	1.613	-110645.361	-4440.467	239.205	-1145.313540
G21-10	G21-9	231-05-11	212-28-07	23.314	-19.670	-12.516	-110665.031	-4452.983	228.302	-4490.700340
G21-9	G21-8	179-54-44	212-22-51	8.813	-7.443	-4.720	-110672.474	-4457.703	211.066	-1570.964238
G21-8	G20-12	180-01-13	212-24-04	16.053	-13.554	-8.602	-110686.028	-4466.305	197.744	-2680.222176
G20-12	K20-17	180-01-26	212-25-30	20.539	-17.337	-11.013	-110703.365	-4477.318	178.129	-3088.222473
K20-17	K20-16	179-59-49	212-25-19	10.790	-9.108	-5.785	-110712.473	-4483.103	161.331	-1469.402748
K20-16	G20-11	180-00-07	212-25-26	4.745	-4.005	-2.544	-110716.478	-4485.647	153.002	-612.773010
G20-11	K20-23	179-56-55	212-22-21	13.100	-11.064	-7.014	-110727.542	-4492.661	143.444	-1587.064416
K20-23	G20-10	179-59-05	212-21-26	1.157	-0.977	-0.619	-110728.519	-4493.280	135.811	-132.687347
G20-10	G20-9	180-02-13	212-23-39	3.937	-3.324	-2.109	-110731.843	-4495.389	133.083	-442.367892
G20-9	G20-8	179-36-11	211-59-50	31.003	-26.293	-16.428	-110758.136	-4511.817	114.546	-3011.757978
G20-8	G20-7	224-59-52	256-59-42	4.999	-1.125	-4.871	-110759.261	-4516.688	93.247	-104.902875
G20-7	G20-6	225-00-46	302-00-28	20.821	11.036	-17.656	-110748.225	-4534.344	70.720	780.465920
G20-6	G20-5	180-01-31	302-01-59	21.772	11.548	-18.457	-110736.677	-4552.801	34.607	399.641636
G20-5	G20-4	223-25-50	345-27-49	4.972	4.813	-1.248	-110731.864	-4554.049	14.902	71.723326
G20-4	G19-2	43-36-50	209-04-39	14.048	-12.277	-6.827	-110744.141	-4560.876	6.827	-83.815079
									倍面積	3535.988166
									面積	1767.9940830
									坪數	534.81



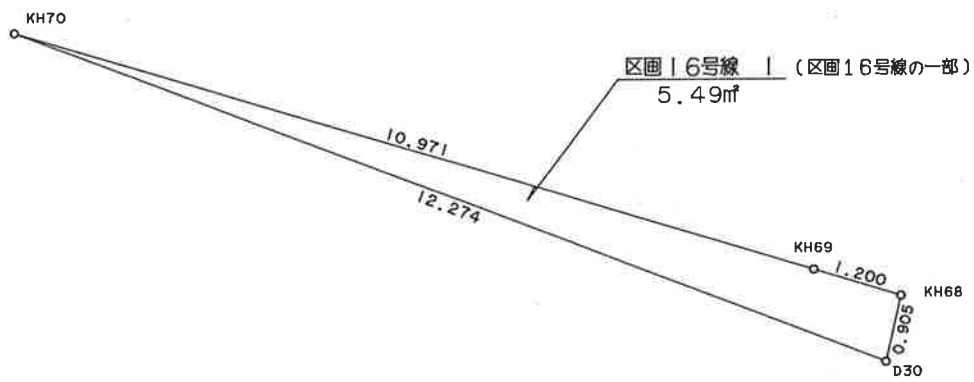
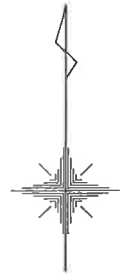
区画16号線 (区画18号線の一部)
1127.36㎡

* * 面積計算 (倍横距法) * *

地 器械点	番 : 区画16号線 視準点	内角	方向角	距離	緯距	經距	X座標	Y座標	倍横距	倍面積
G22-56	G22-55	91-28-18	126-03-40	8.742	-5.146	7.067	-110514.681	-4752.987	7.067	-36.366782
G22-55	G22-54	175-58-10	122-01-50	9.672	-5.130	8.200	-110519.811	-4744.787	22.334	-114.573420
G22-54	G22-53	188-18-33	130-20-23	4.752	-3.076	3.622	-110522.887	-4741.165	34.156	-105.063856
G22-53	G22-52	180-23-08	130-43-31	14.438	-9.420	10.942	-110532.307	-4730.223	48.720	-458.942400
G22-52	G22-51	180-01-50	130-45-21	2.293	-1.497	1.737	-110533.804	-4728.486	61.399	-91.914303
G22-51	G22-50	179-13-53	129-59-14	4.564	-2.933	3.497	-110536.737	-4724.989	66.633	-195.434589
G22-50	G22-49	179-01-12	129-00-26	4.585	-2.886	3.563	-110539.623	-4721.426	73.693	-212.677998
G22-49	G22-48	178-45-37	127-46-03	4.583	-2.807	3.623	-110542.430	-4717.803	80.879	-227.027353
G22-48	G22-47	179-24-17	127-10-20	4.584	-2.770	3.653	-110545.200	-4714.150	88.155	-244.189350
G22-47	G22-46	178-49-53	126-00-13	4.590	-2.698	3.713	-110547.898	-4710.437	95.521	-257.715658
G22-46	G22-45	178-59-11	124-59-24	4.585	-2.629	3.756	-110550.527	-4706.681	102.990	-270.760710
G22-45	G22-44	179-06-08	124-05-32	4.585	-2.570	3.797	-110553.097	-4702.884	110.543	-284.095510
G22-44	G22-43	179-05-56	123-11-28	4.585	-2.510	3.837	-110555.607	-4699.047	118.177	-296.624270
G22-43	G22-42	178-55-08	122-06-36	4.587	-2.438	3.885	-110558.045	-4695.162	125.899	-306.941762
G22-42	G22-41	178-57-39	121-04-15	4.588	-2.368	3.930	-110560.413	-4691.232	133.714	-316.634752
G22-41	G22-40	179-11-02	120-15-17	4.587	-2.311	3.962	-110562.724	-4687.270	141.606	-327.251466
G22-40	G22-39	178-48-17	119-03-34	4.593	-2.231	4.015	-110564.955	-4683.255	149.583	-333.719673
G22-39	G22-38	178-58-11	118-01-45	4.586	-2.155	4.048	-110567.110	-4679.207	157.646	-339.727130
G22-38	G22-37	179-09-47	117-11-32	4.576	-2.091	4.070	-110569.201	-4675.137	165.764	-346.612524
G22-37	G22-36	179-05-34	116-17-06	4.573	-2.025	4.100	-110571.226	-4671.037	173.934	-352.216350
G22-36	G22-35	178-57-16	115-14-22	4.601	-1.962	4.162	-110573.188	-4666.875	182.196	-357.468552
G22-35	G22-34	179-00-11	114-14-33	4.591	-1.885	4.186	-110575.073	-4662.689	190.544	-359.175440
G22-34	G22-33	179-07-19	113-21-52	4.582	-1.817	4.206	-110576.890	-4658.483	198.936	-361.466712
G22-33	G22-32	179-02-39	112-24-31	4.591	-1.750	4.244	-110578.640	-4654.239	207.386	-362.925500
G22-32	G22-31	178-45-54	111-10-25	4.593	-1.659	4.283	-110580.299	-4649.956	215.913	-358.199667
G22-31	G22-30	179-24-42	110-35-07	2.292	-0.806	2.146	-110581.105	-4647.810	222.342	-179.207652
G22-30	G22-29	179-43-00	110-18-07	2.164	-0.751	2.030	-110581.856	-4645.780	226.518	-170.115018

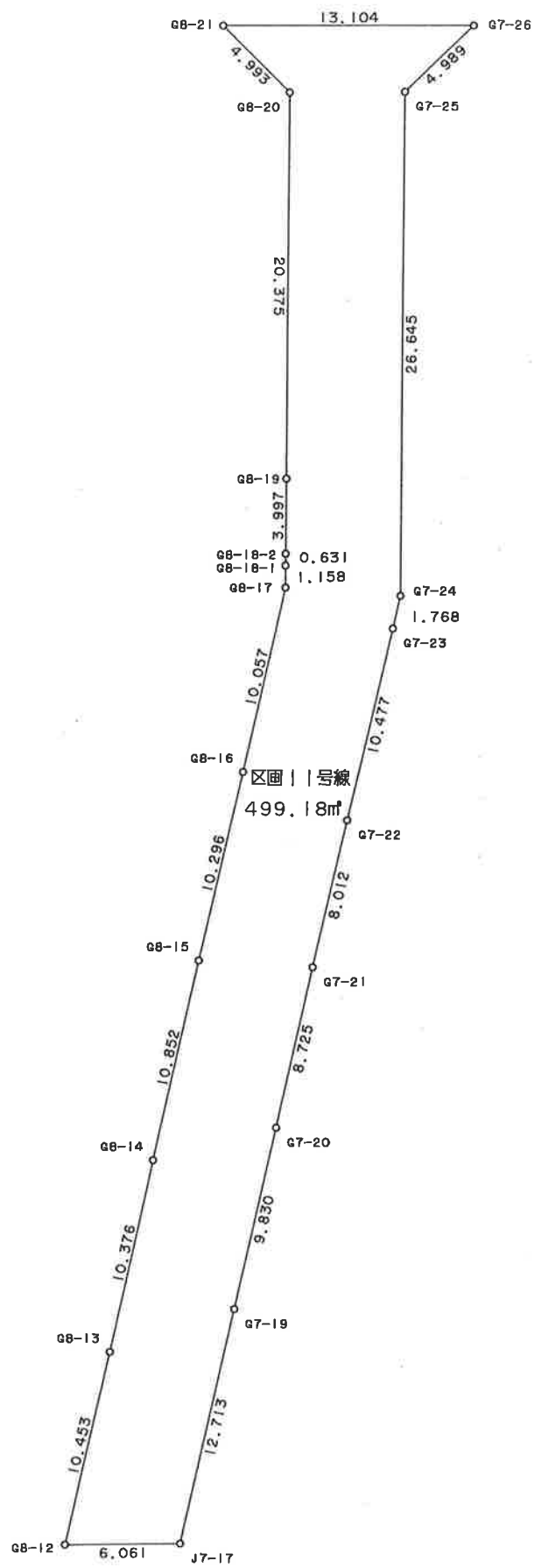
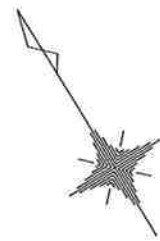
器械点	視準点	内角	方向角	距離	緯距	經距	X座標	Y座標	倍橫距	倍面積
G22-29	G22-28	179-12-44	109-30-51	4.332	-1.447	4.083	-110583.303	-4641.697	232.631	-336.617057
G22-28	G22-27	178-53-44	108-24-35	4.322	-1.365	4.101	-110584.668	-4637.596	240.815	-328.712475
G22-27	G22-26	179-10-03	107-34-38	4.331	-1.308	4.129	-110585.976	-4633.467	249.045	-325.750860
G22-26	G22-25	179-01-09	106-35-47	4.327	-1.236	4.147	-110587.212	-4629.320	257.321	-318.048756
G22-25	G22-24	179-11-46	105-47-33	4.321	-1.176	4.158	-110588.388	-4625.162	265.626	-312.376176
G22-24	G22-23	178-53-21	104-40-54	4.328	-1.097	4.187	-110589.485	-4620.975	273.971	-300.546187
G22-23	G22-22	179-13-34	103-54-28	4.323	-1.039	4.196	-110590.524	-4616.779	282.354	-293.365806
G22-22	G22-21	178-45-52	102-40-20	4.330	-0.950	4.225	-110591.474	-4612.554	290.775	-276.236250
G22-21	G22-20	179-09-43	101-50-03	4.330	-0.888	4.238	-110592.362	-4608.316	299.238	-265.723344
G22-20	G22-19	179-11-25	101-01-28	4.330	-0.828	4.250	-110593.190	-4604.066	307.726	-254.797128
G22-19	G22-18	179-11-04	100-12-32	4.328	-0.767	4.259	-110593.957	-4599.807	316.235	-242.552245
G22-18	G22-17	178-50-39	99-03-11	4.328	-0.681	4.274	-110594.638	-4595.533	324.768	-221.167008
G22-17	G22-16	179-20-48	98-23-59	2.163	-0.316	2.140	-110594.954	-4593.393	331.182	-104.653512
G22-16	G22-15	179-56-34	98-20-33	8.622	-1.251	8.531	-110596.205	-4584.862	341.853	-427.658103
G22-15	G22-14	180-17-27	98-38-00	2.045	-0.307	2.022	-110596.512	-4582.840	352.406	-108.188642
G22-14	G22-13	180-17-37	98-55-37	4.118	-0.639	4.068	-110597.151	-4578.772	358.496	-229.078944
G22-13	G22-12	181-01-40	99-57-17	4.113	-0.711	4.051	-110597.862	-4574.721	366.615	-260.663265
G22-12	G22-11	180-54-05	100-51-22	4.110	-0.774	4.036	-110598.636	-4570.685	374.702	-290.019348
G22-11	G22-10	180-41-10	101-32-32	4.113	-0.823	4.030	-110599.459	-4566.655	382.768	-315.018064
G22-10	G22-9	180-38-00	102-10-32	4.116	-0.868	4.023	-110600.327	-4562.632	390.821	-339.232628
G22-9	G22-8	181-07-24	103-17-56	4.108	-0.945	3.998	-110601.272	-4558.634	398.842	-376.905690
G22-8	G22-7	180-53-09	104-11-05	4.118	-1.009	3.992	-110602.281	-4554.642	406.832	-410.493488
G22-7	G22-6	180-40-07	104-51-12	4.116	-1.055	3.978	-110603.336	-4550.664	414.802	-437.616110
G22-6	G22-5	180-48-33	105-39-45	2.059	-0.556	1.983	-110603.892	-4548.681	420.763	-233.944228
G22-5	B22-3	180-01-30	105-41-15	26.251	-7.098	25.273	-110610.990	-4523.408	448.019	-3180.038862
B22-3	K.72-1	179-59-06	105-40-21	9.632	-2.602	9.274	-110613.592	-4514.134	482.566	-1255.636732
K.72-1	KH72	7-09-22	292-49-43	23.731	9.207	-21.872	-110604.385	-4536.006	469.968	4326.995376
KH72	KH73	180-02-39	292-52-22	22.903	8.902	-21.102	-110595.483	-4557.108	426.994	3801.100588

器械点	視準点	内角	方向角	距離	緯距	經距	X座標	Y座標	倍橫距	倍面積
KH73	KH74	168-18-33	281-10-55	25.989	5.040	-25.496	-110590.443	-4582.604	380.396	1917.195840
KH74	KH75	176-48-01	277-58-56	29.114	4.043	-28.832	-110586.400	-4611.436	326.068	1318.292924
KH75	KH76	184-33-05	282-32-01	21.294	4.621	-20.786	-110581.779	-4632.222	276.450	1277.485684
KH76	KH77	184-04-58	286-36-59	15.785	4.514	-15.126	-110577.265	-4647.348	240.537	1085.785950
KH77	KH78	188-11-32	294-48-31	22.102	9.274	-20.063	-110567.991	-4667.411	205.349	1904.395390
KH78	KH79	185-12-51	300-01-22	14.504	7.257	-12.558	-110560.734	-4679.969	172.728	1253.487096
KH79	KH80	180-30-51	300-32-13	6.398	3.251	-5.511	-110557.483	-4685.480	154.659	502.796409
KH80	KH81	182-52-34	303-24-47	12.681	6.983	-10.585	-110550.500	-4696.065	138.563	967.585429
KH81	KH82	180-06-20	303-31-07	16.686	9.214	-13.911	-110541.286	-4709.976	114.067	1051.013338
KH82	KH83	173-20-11	296-51-18	15.551	7.025	-13.874	-110534.261	-4723.850	86.282	606.131050
KH83	KH84	179-59-31	296-50-49	6.452	2.914	-5.757	-110531.347	-4729.607	66.651	194.221014
KH84	KH85	180-00-52	296-51-41	1.211	0.547	-1.080	-110530.800	-4730.687	59.814	32.718258
KH85	KK86	193-31-28	310-23-09	36.434	23.607	-27.752	-110507.193	-4758.439	30.982	731.392074
KK86	G22-56	84-12-13	214-35-22	2.845	-2.342	-1.615	-110509.535	-4760.054	1.615	-3.782330
									倍面積	2254.724785
									面積	1127.3623925
									坪數	341.02



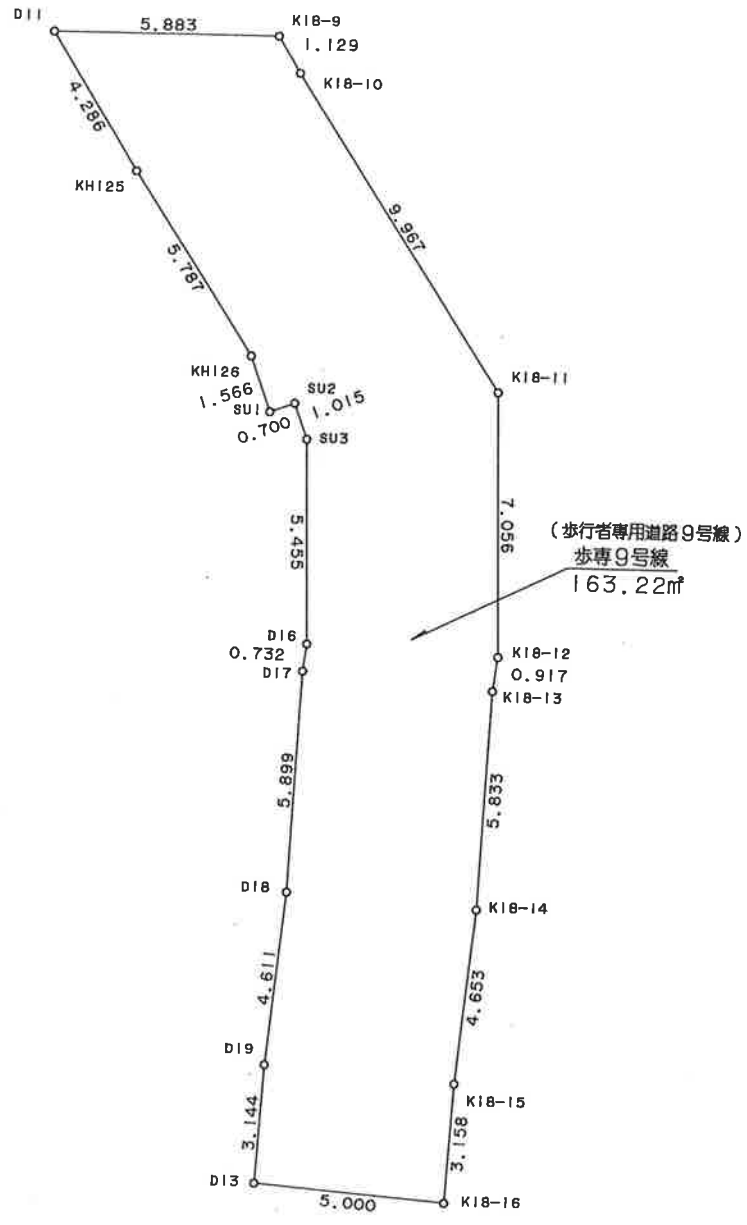
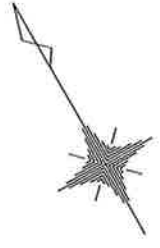
* * 面積計算 (倍横距法) * *

地 器械点	番 : 視準点	区画16号線 1 内角	方向角	距離	緯距	經距	X座標	Y座標	倍横距	倍面積
KH70	D30	4-13-06	111-15-10	12.274	-4.449	11.439	-110622.101	-4493.013	11.439	-50.892111
D30	KH68	81-23-09	12-38-19	0.905	0.883	0.198	-110621.218	-4492.815	23.076	20.376108
KH68	KH69	94-25-19	287-03-38	1.200	0.352	-1.147	-110620.866	-4493.962	22.127	7.788704
KH69	KH70	179-58-26	287-02-04	10.971	3.214	-10.490	-110617.652	-4504.452	10.490	33.714860
									倍面積	10.987561
									面積	5.4937805
									坪数	1.66



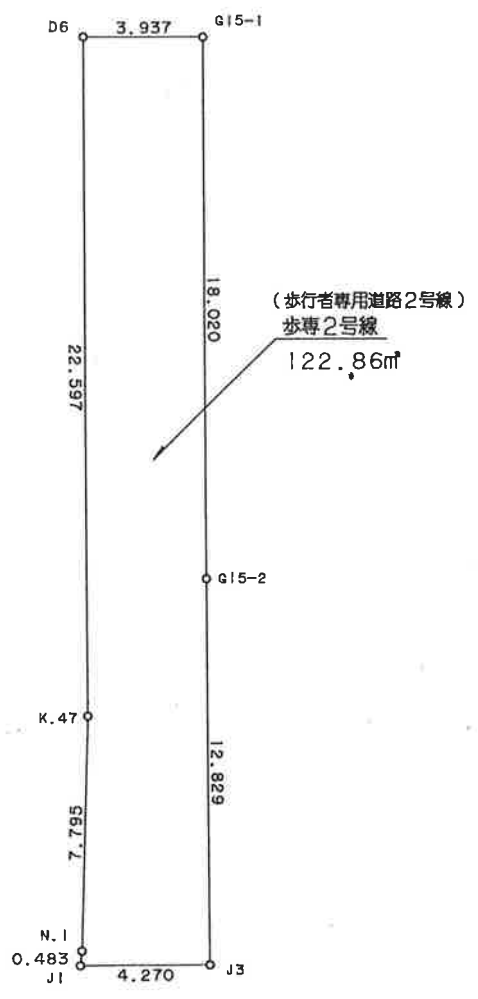
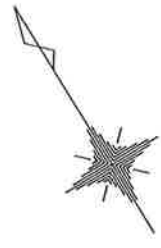
* * 面積計算 (倍横距法) * *

地 器械点	番： 視準点	区画11号線 内角	方向角	距離	緯距	經距	X座標	Y座標	倍横距	倍面積
G8-21	G8-20	44-55-42	166-56-36	4.993	-4.864	1.128	-110848.749	-4309.740	1.128	-5.486592
G8-20	G8-19	225-03-32	212-00-08	20.375	-17.279	-10.798	-110866.028	-4320.538	-8.542	147.597218
G8-19	G8-18-2	180-05-07	212-05-15	3.997	-3.386	-2.123	-110869.414	-4322.661	-21.463	72.673718
G8-18-2	G8-18-1	179-57-58	212-03-13	0.631	-0.535	-0.335	-110869.949	-4322.996	-23.921	12.797735
G8-18-1	G8-17	179-23-07	211-26-20	1.158	-0.988	-0.604	-110870.937	-4323.600	-24.860	24.561680
G8-17	G8-16	193-03-13	224-29-33	10.057	-7.174	-7.048	-110878.111	-4330.648	-32.512	233.241088
G8-16	G8-15	180-18-39	224-48-12	10.296	-7.305	-7.255	-110885.416	-4337.903	-46.815	341.983575
G8-15	G8-14	179-48-57	224-37-09	10.852	-7.724	-7.622	-110893.140	-4345.525	-61.692	476.509008
G8-14	G8-13	179-49-49	224-26-58	10.376	-7.407	-7.266	-110900.547	-4352.791	-76.580	567.228060
G8-13	G8-12	180-15-22	224-42-20	10.453	-7.429	-7.353	-110907.976	-4360.144	-91.199	677.517371
G8-12	J7-17	76-49-15	121-31-35	6.061	-3.169	5.166	-110911.145	-4354.978	-93.386	295.940234
J7-17	G7-19	103-12-33	44-44-08	12.713	9.031	8.948	-110902.114	-4346.030	-79.272	-715.905432
G7-19	G7-20	179-58-04	44-42-12	9.830	6.987	6.915	-110895.127	-4339.115	-63.409	-443.038683
G7-20	G7-21	179-51-03	44-33-15	8.725	6.217	6.121	-110888.910	-4332.994	-50.373	-313.168941
G7-21	G7-22	180-02-29	44-35-44	8.012	5.705	5.625	-110883.205	-4327.369	-38.627	-220.367035
G7-22	G7-23	180-05-28	44-41-12	10.477	7.449	7.368	-110875.756	-4320.001	-25.634	-190.947666
G7-23	G7-24	180-00-56	44-42-08	1.768	1.257	1.244	-110874.499	-4318.757	-17.022	-21.396654
G7-24	G7-25	167-19-19	32-01-27	26.645	22.590	14.129	-110851.909	-4304.628	-1.649	-37.250910
G7-25	G7-26	225-30-29	77-31-56	4.989	1.077	4.871	-110850.832	-4299.757	17.351	18.687027
G7-26	G8-21	44-28-58	302-00-54	13.104	6.947	-11.111	-110843.885	-4310.868	11.111	77.188117
									倍面積	998.362918
									面積	499.1814590
									坪数	151.00



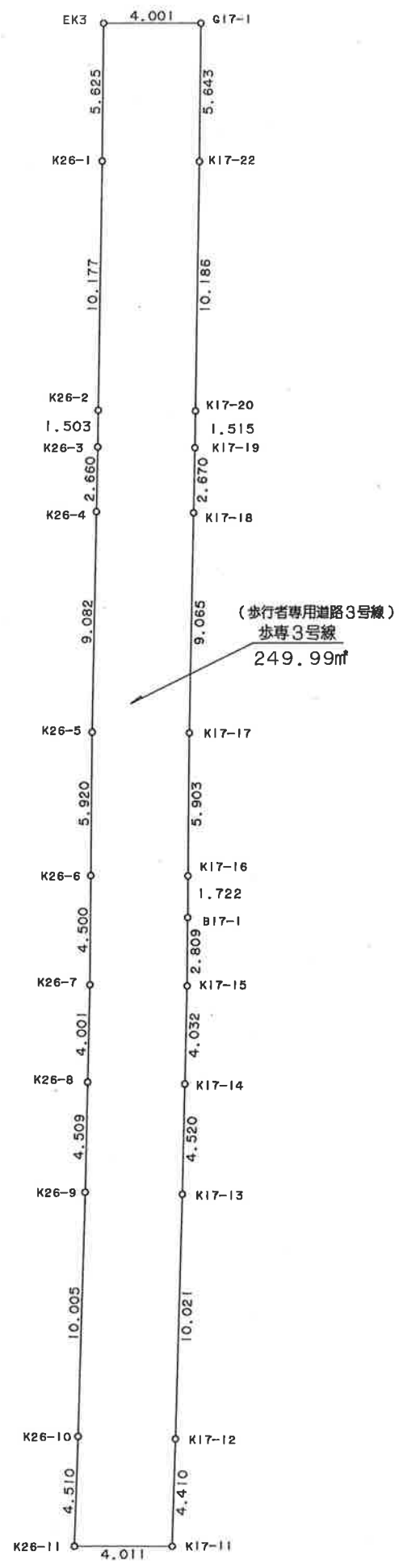
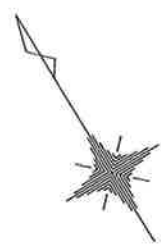
* * 面積計算 (倍横距法) * *

地 器械点	番： 視準点	步專9号線 内角	方向角	距離	緯距	經距	X座標	Y座標	倍横距	倍面積
D11	KH125	58-13-27	179-35-56	4.286	-4.286	0.030	-110794.651	-4576.478	0.030	-0.128580
KH125	KH126	178-37-07	178-13-03	5.787	-5.784	0.180	-110800.435	-4576.298	0.240	-1.388160
KH126	SU1	193-00-49	191-13-52	1.566	-1.536	-0.305	-110801.971	-4576.603	0.115	-0.176640
SU1	SU2	89-57-59	101-11-51	0.700	-0.136	0.687	-110802.107	-4575.916	0.497	-0.067592
SU2	SU3	270-03-25	191-15-16	1.015	-0.995	-0.198	-110803.102	-4576.114	0.986	-0.981070
SU3	D16	198-20-31	209-35-47	5.455	-4.743	-2.694	-110807.845	-4578.808	-1.906	9.040158
D16	D17	188-55-00	218-30-47	0.732	-0.573	-0.456	-110808.418	-4579.264	-5.056	2.897088
D17	D18	175-17-25	213-48-12	5.899	-4.902	-3.282	-110813.320	-4582.546	-8.794	43.108188
D18	D19	183-11-36	216-59-48	4.611	-3.683	-2.775	-110817.003	-4585.321	-14.851	54.696233
D19	D13	177-45-18	214-45-06	3.144	-2.583	-1.792	-110819.586	-4587.113	-19.418	50.156694
D13	K18-16	91-17-27	126-02-33	5.000	-2.942	4.043	-110822.528	-4583.070	-17.167	50.505314
K18-16	K18-15	88-43-46	34-46-19	3.158	2.594	1.801	-110819.934	-4581.269	-11.323	-29.371862
K18-15	K18-14	182-13-34	36-59-53	4.653	3.716	2.800	-110816.218	-4578.469	-6.722	-24.978952
K18-14	K18-13	176-48-13	33-48-06	5.833	4.847	3.245	-110811.371	-4575.224	-0.677	-3.281419
K18-13	K18-12	184-43-52	38-31-58	0.917	0.717	0.571	-110810.654	-4574.653	3.139	2.250663
K18-12	K18-11	171-03-58	29-35-56	7.056	6.135	3.485	-110804.519	-4571.168	7.195	44.141325
K18-11	K18-10	148-36-47	358-12-43	9.967	9.962	-0.311	-110794.557	-4571.479	10.369	103.295978
K18-10	K18-9	181-29-01	359-41-44	1.129	1.129	-0.006	-110793.428	-4571.485	10.052	11.348708
K18-9	D11	121-40-45	301-22-29	5.883	3.063	-5.023	-110790.365	-4576.508	5.023	15.385449
									倍面積	326.451523
									面積	163.2257615
									坪数	49.37



* * 面積計算 (倍橫距法) * *

地 器械点	番： 視準点	步專2号線 内角	方向角	距離	緯距	經距	X座標	Y座標	倍橫距	倍面積
D6	K.47	89-07-55	211-09-32	22.597	-19.337	-11.692	-110807.731	-4494.939	-11.692	226.088204
K.47	N.1	181-58-07	213-07-39	7.795	-6.528	-4.260	-110814.259	-4499.199	-27.644	180.460032
N.1	J1	184-28-38	217-36-17	0.483	-0.383	-0.295	-110814.642	-4499.494	-32.199	12.332217
J1	J3	84-05-52	121-42-09	4.270	-2.244	3.633	-110816.886	-4495.861	-28.861	64.764084
J3	G15-2	89-26-29	31-08-38	12.829	10.980	6.635	-110805.906	-4489.226	-18.593	-204.151140
G15-2	G15-1	179-59-26	31-08-04	18.020	15.424	9.317	-110790.482	-4479.909	-2.641	-40.734784
G15-1	D6	90-53-33	302-01-37	3.937	2.088	-3.338	-110788.394	-4483.247	3.338	6.969744
									倍面積	245.728357
									面積	122.8641785
									坪数	37.16



* * 面積計算 (倍横距法) * *

地 器械点	番 : 視準点	步專3号線 内角	方向角	距離	緯距	經距	X座標	Y座標	倍横距	倍面積
EK3	K26-1	90-07-33	212-02-24	5.625	-4.768	-2.984	-110908.019	-4558.571	-2.984	14.227712
K26-1	K26-2	180-16-50	212-19-14	10.177	-8.600	-5.441	-110916.619	-4564.012	-11.409	98.117400
K26-2	K26-3	180-00-58	212-20-12	1.503	-1.270	-0.804	-110917.889	-4564.816	-17.654	22.420580
K26-3	K26-4	180-17-23	212-37-35	2.660	-2.240	-1.434	-110920.129	-4566.250	-19.892	44.558080
K26-4	K26-5	179-59-47	212-37-22	9.082	-7.649	-4.896	-110927.778	-4571.146	-26.222	200.572078
K26-5	K26-6	179-28-41	212-06-03	5.920	-5.015	-3.146	-110932.793	-4574.292	-34.264	171.833960
K26-6	K26-7	180-02-32	212-08-35	4.500	-3.810	-2.394	-110936.603	-4576.686	-39.804	151.653240
K26-7	K26-8	180-51-35	213-00-10	4.001	-3.355	-2.179	-110939.958	-4578.865	-44.377	148.884835
K26-8	K26-9	180-02-58	213-03-08	4.509	-3.779	-2.459	-110943.737	-4581.324	-49.015	185.227685
K26-9	K26-10	180-16-27	213-19-35	10.005	-8.360	-5.497	-110952.097	-4586.821	-56.971	476.277560
K26-10	K26-11	180-19-30	213-39-05	4.510	-3.754	-2.499	-110955.851	-4589.320	-64.967	243.886118
K26-11	K17-11	88-20-20	121-59-25	4.011	-2.125	3.402	-110957.976	-4585.918	-64.064	136.136000
K17-11	K17-12	91-32-28	33-31-53	4.410	3.676	2.436	-110954.300	-4583.482	-58.226	-214.038776
K17-12	K17-13	179-47-50	33-19-43	10.021	8.373	5.506	-110945.927	-4577.976	-50.284	-421.027932
K17-13	K17-14	179-42-27	33-02-10	4.520	3.789	2.464	-110942.138	-4575.512	-42.314	-160.327746
K17-14	K17-15	179-58-48	33-00-58	4.032	3.381	2.197	-110938.757	-4573.315	-37.653	-127.304793
K17-15	B17-1	179-08-26	32-09-24	2.809	2.378	1.495	-110936.379	-4571.820	-33.961	-80.759258
B17-1	K17-16	179-56-13	32-05-37	1.722	1.459	0.915	-110934.920	-4570.905	-31.551	-46.032909
K17-16	K17-17	180-00-38	32-06-15	5.903	5.000	3.137	-110929.920	-4567.768	-27.499	-137.495000
K17-17	K17-18	180-31-06	32-37-21	9.065	7.635	4.887	-110922.285	-4562.881	-19.475	-148.691625
K17-18	K17-19	180-01-12	32-38-33	2.670	2.248	1.440	-110920.037	-4561.441	-13.148	-29.556704
K17-19	K17-20	179-41-01	32-19-34	1.515	1.280	0.810	-110918.757	-4560.631	-10.898	-13.949440
K17-20	K17-22	179-59-22	32-18-56	10.186	8.608	5.445	-110910.149	-4555.186	-4.643	-39.966944
K17-22	G17-1	179-44-18	32-03-14	5.643	4.783	2.995	-110905.366	-4552.191	3.797	18.161051
G17-1	EK3	89-51-37	301-54-51	4.001	2.115	-3.396	-110903.251	-4555.587	3.396	7.182540

倍面積

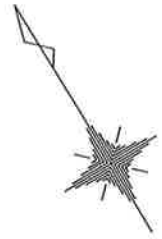
499.987712

面積

249.9938560

坪數

75.62



G19-14 3.984 D9

3.984

(歩行者専用道路5号線)
歩専5号線

126.00m²

31.478

31.038

J4

4.044

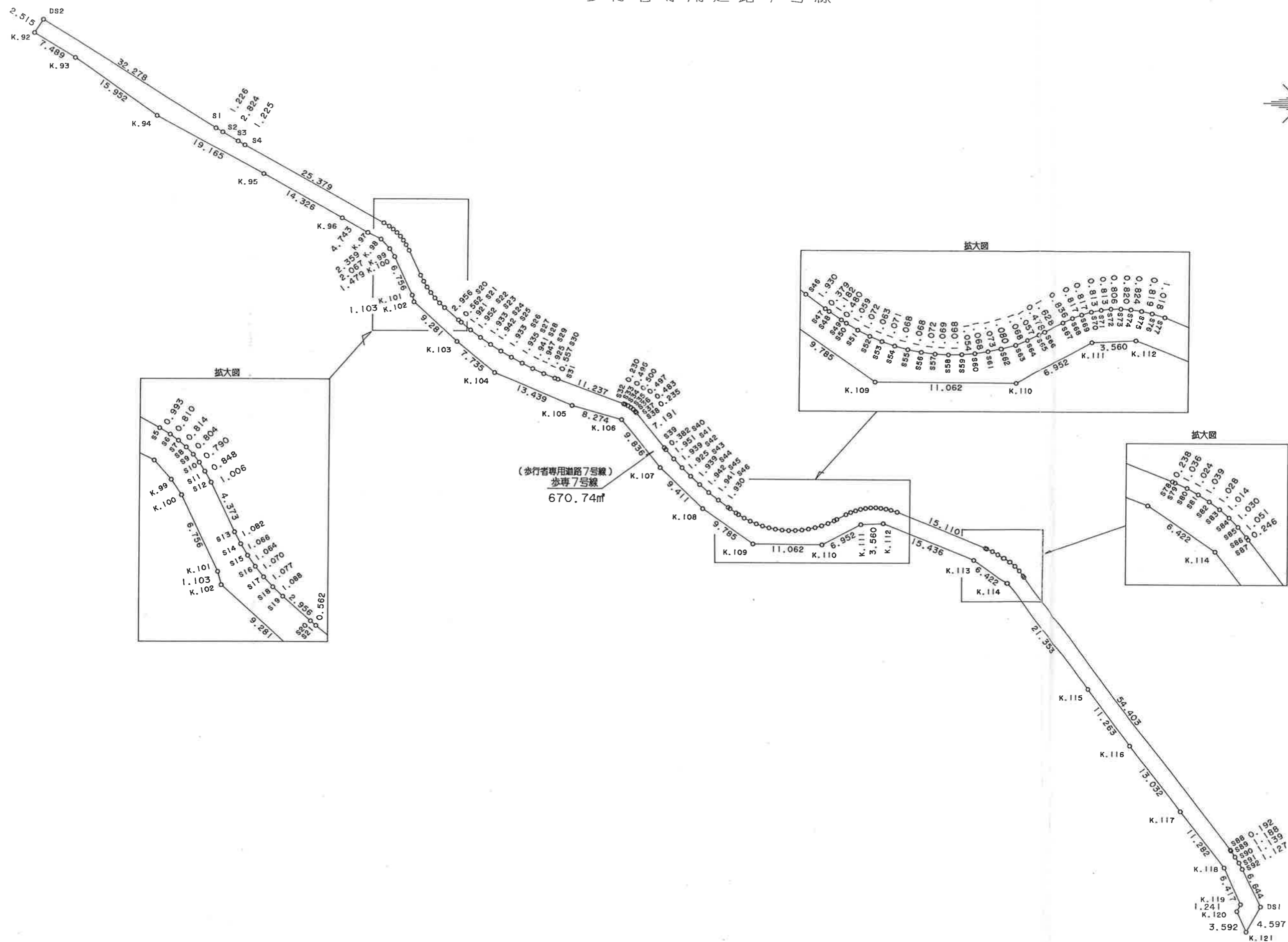
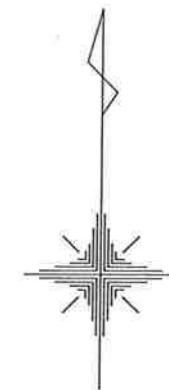
NK4

0.477
J2

* * 面積計算 (倍横距法) * *

地 器械点	番 : 步專 5 号線 視準点	内角	方向角	距離	緯距	經距	X座標	Y座標	倍横距	倍面積
G19-14	J4	90-02-47	212-02-28	31.478	-26.683	-16.700	-110795.347	-4531.550	-16.700	445.606100
J4	J2	90-27-30	122-29-58	4.044	-2.173	3.411	-110797.520	-4528.139	-29.989	65.166097
J2	NK4	86-13-00	28-42-58	0.477	0.418	0.229	-110797.102	-4527.910	-26.349	-11.013882
NK4	D9	183-15-55	31-58-53	31.038	26.327	16.439	-110770.775	-4511.471	-9.681	-254.871687
D9	G19-14	90-00-48	301-59-41	3.984	2.111	-3.379	-110768.664	-4514.850	3.379	7.133069
									倍面積	252.019697
									面積	126.0098485
									坪数	38.11

歩行者専用道路7号線



* * 面積計算 (倍横距法) * *

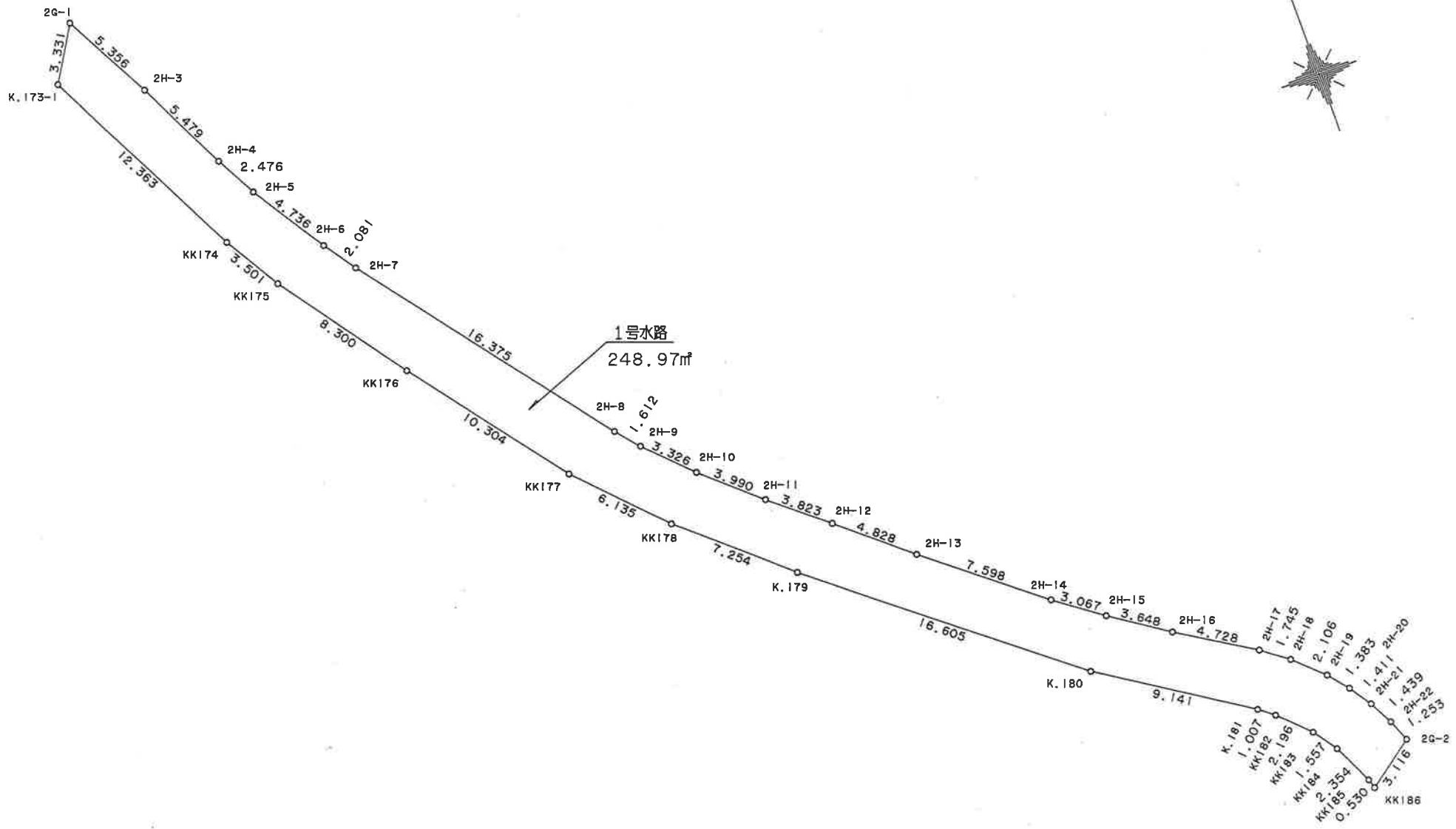
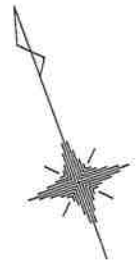
地 器械点	番： 視準点	步專7号線 内角	方向角	距離	緯距	經距	X座標	Y座標	倍横距	倍面積
K.92	K.93	88-48-39	121-33-10	7.489	-3.919	6.382	-110615.612	-4766.960	6.382	-25.011058
K.93	K.94	183-19-47	124-52-57	15.952	-9.123	13.086	-110624.735	-4753.874	25.850	-235.829550
K.94	K.95	173-38-44	118-31-41	19.165	-9.153	16.838	-110633.888	-4737.036	55.774	-510.499422
K.95	K.96	180-41-06	119-12-47	14.326	-6.992	12.504	-110640.880	-4724.532	85.116	-595.131072
K.96	K.97	180-00-00	119-12-47	4.743	-2.315	4.140	-110643.195	-4720.392	101.760	-235.574400
K.97	K.98	176-58-19	116-11-06	2.359	-1.041	2.117	-110644.236	-4718.275	108.017	-112.445697
K.98	K.99	201-51-16	138-02-22	2.067	-1.537	1.382	-110645.773	-4716.893	111.516	-171.400092
K.99	K.100	188-52-59	146-55-21	1.479	-1.239	0.807	-110647.012	-4716.086	113.705	-140.880495
K.100	K.101	187-58-08	154-53-29	6.756	-6.118	2.867	-110653.130	-4713.219	117.379	-718.124722
K.101	K.102	190-11-26	165-04-55	1.103	-1.066	0.284	-110654.196	-4712.935	120.530	-128.484980
K.102	K.103	147-30-28	132-35-23	9.281	-6.281	6.833	-110660.477	-4706.102	127.647	-801.750807
K.103	K.104	177-04-32	129-39-55	7.735	-4.937	5.954	-110665.414	-4700.148	140.434	-693.322658
K.104	K.105	163-13-23	112-53-18	13.439	-5.227	12.381	-110670.641	-4687.767	158.769	-829.885563
K.105	K.106	172-45-44	105-39-02	8.274	-2.232	7.967	-110672.873	-4679.800	179.117	-399.789144
K.106	K.107	215-20-12	140-59-14	9.836	-7.643	6.192	-110680.516	-4673.608	193.276	-1477.208468
K.107	K.108	173-09-06	134-08-20	9.411	-6.554	6.754	-110687.070	-4666.854	206.222	-1351.578988
K.108	K.109	170-43-20	124-51-40	9.785	-5.593	8.029	-110692.663	-4658.825	221.005	-1236.080965
K.109	K.110	145-27-55	90-19-35	11.062	-0.063	11.062	-110692.726	-4647.763	240.096	-15.126048
K.110	K.111	151-37-37	61-57-12	6.952	3.269	6.136	-110689.457	-4641.627	257.294	841.094086
K.111	K.112	205-27-16	87-24-28	3.560	0.161	3.556	-110689.296	-4638.071	266.986	42.984746
K.112	K.113	204-44-50	112-09-18	15.436	-5.821	14.296	-110695.117	-4623.775	284.838	-1658.041998
K.113	K.114	192-41-53	124-51-11	6.422	-3.670	5.270	-110698.787	-4618.505	304.404	-1117.162680
K.114	K.115	197-08-00	141-59-11	21.353	-16.823	13.150	-110715.610	-4605.355	322.824	-5430.868152
K.115	K.116	180-36-42	142-35-53	11.263	-8.947	6.841	-110724.557	-4598.514	342.815	-3067.165805
K.116	K.117	180-23-23	142-59-16	13.032	-10.406	7.845	-110734.963	-4590.669	357.501	-3720.155406
K.117	K.118	178-59-33	141-58-49	11.282	-8.888	6.949	-110743.851	-4583.720	372.295	-3308.957960
K.118	K.119	193-35-58	155-34-47	6.417	-5.843	2.653	-110749.694	-4581.067	381.897	-2231.424171

器械点	視準点	内角	方向角	距離	緯距	經距	X座標	Y座標	倍橫距	倍面積
K.119	K.120	233-08-02	208-42-49	1.241	-1.088	-0.596	-110750.782	-4581.663	383.954	-417.741952
K.120	K.121	126-38-26	155-21-15	3.592	-3.265	1.498	-110754.047	-4580.165	384.856	-1256.554840
K.121	DS1	53-52-33	29-13-48	4.597	4.012	2.245	-110750.035	-4577.920	388.599	1559.059188
DS1	S92	124-47-42	334-01-30	6.644	5.973	-2.910	-110744.062	-4580.830	387.934	2317.129782
S92	S91	178-16-24	332-17-54	1.127	0.998	-0.524	-110743.064	-4581.354	384.500	383.731000
S91	S90	174-14-06	326-32-00	1.139	0.950	-0.628	-110742.114	-4581.982	383.348	364.180600
S90	S89	178-32-45	325-04-45	1.188	0.974	-0.680	-110741.140	-4582.662	382.040	372.106960
S89	S88	180-19-12	325-23-57	0.192	0.158	-0.109	-110740.982	-4582.771	381.251	60.237658
S88	S87	177-08-14	322-32-11	54.403	43.182	-33.091	-110697.800	-4615.862	348.051	15029.538282
S87	S86	178-54-47	321-26-58	0.246	0.192	-0.153	-110697.608	-4616.015	314.807	60.442944
S86	S85	178-59-47	320-26-45	1.051	0.810	-0.669	-110696.798	-4616.684	313.985	254.327850
S85	S84	175-29-55	315-56-40	1.030	0.740	-0.716	-110696.058	-4617.400	312.600	231.324000
S84	S83	175-34-35	311-31-15	1.014	0.672	-0.759	-110695.386	-4618.159	311.125	209.076000
S83	S82	174-51-32	306-22-47	1.028	0.610	-0.828	-110694.776	-4618.987	309.538	188.818180
S82	S81	176-45-35	303-08-22	1.039	0.568	-0.870	-110694.208	-4619.857	307.840	174.853120
S81	S80	176-40-55	299-49-17	1.024	0.509	-0.888	-110693.699	-4620.745	306.082	155.795738
S80	S79	174-41-28	294-30-45	1.036	0.430	-0.943	-110693.269	-4621.688	304.251	130.827930
S79	S78	178-29-47	293-00-32	0.238	0.093	-0.219	-110693.176	-4621.907	303.089	28.187277
S78	S77	179-16-07	292-16-39	15.110	5.728	-13.982	-110687.448	-4635.889	288.888	1654.750464
S77	S76	175-05-24	287-22-03	1.018	0.304	-0.972	-110687.144	-4636.861	273.934	83.275936
S76	S75	176-15-42	283-37-45	0.819	0.193	-0.796	-110686.951	-4637.657	272.166	52.528038
S75	S74	174-35-57	278-13-42	0.824	0.118	-0.816	-110686.833	-4638.473	270.554	31.925372
S74	S73	176-19-14	274-32-56	0.820	0.065	-0.817	-110686.768	-4639.290	268.921	17.479865
S73	S72	174-44-25	269-17-21	0.806	-0.010	-0.806	-110686.778	-4640.096	267.298	-2.672980
S72	S71	174-17-06	263-34-27	0.813	-0.091	-0.808	-110686.869	-4640.904	265.684	-24.177244
S71	S70	175-39-17	259-13-44	0.813	-0.152	-0.799	-110687.021	-4641.703	264.077	-40.139704
S70	S69	174-21-14	253-34-58	0.817	-0.231	-0.784	-110687.252	-4642.487	262.494	-60.636114
S69	S68	176-13-50	249-48-48	0.817	-0.282	-0.767	-110687.534	-4643.254	260.943	-73.585926

器械点	視準点	内角	方向角	距離	緯距	經距	X座標	Y座標	倍橫距	倍面積
S68	S67	174-36-09	244-24-57	0.836	-0.361	-0.754	-110687.895	-4644.008	259.422	-93.651342
S67	S66	177-50-19	242-15-16	1.628	-0.758	-1.441	-110688.653	-4645.449	257.227	-194.978066
S66	S65	180-03-15	242-18-31	0.478	-0.222	-0.423	-110688.875	-4645.872	255.363	-56.690586
S65	S64	183-34-29	245-53-00	1.057	-0.432	-0.965	-110689.307	-4646.837	253.975	-109.717200
S64	S63	183-19-19	249-12-19	1.068	-0.379	-0.998	-110689.686	-4647.835	252.012	-95.512548
S63	S62	184-20-22	253-32-41	1.080	-0.306	-1.036	-110689.992	-4648.871	249.978	-76.493268
S62	S61	184-24-06	257-56-47	1.073	-0.224	-1.049	-110690.216	-4649.920	247.893	-55.528032
S61	S60	183-32-39	261-29-26	1.068	-0.158	-1.056	-110690.374	-4650.976	245.788	-38.834504
S60	S59	184-09-24	265-38-50	1.054	-0.080	-1.051	-110690.454	-4652.027	243.681	-19.494480
S59	S58	183-03-56	268-42-46	1.068	-0.024	-1.068	-110690.478	-4653.095	241.562	-5.797488
S58	S57	184-49-36	273-32-22	1.069	0.066	-1.067	-110690.412	-4654.162	239.427	15.802182
S57	S56	183-38-19	277-10-41	1.072	0.134	-1.064	-110690.278	-4655.226	237.296	31.797664
S56	S55	184-12-58	281-23-39	1.068	0.211	-1.047	-110690.067	-4656.273	235.185	49.624035
S55	S54	183-55-03	285-18-42	1.068	0.282	-1.030	-110689.785	-4657.303	233.108	65.736456
S54	S53	183-53-06	289-11-48	1.071	0.352	-1.011	-110689.433	-4658.314	231.067	81.335584
S53	S52	183-50-46	293-02-34	1.063	0.416	-0.978	-110689.017	-4659.292	229.078	95.296448
S52	S51	183-47-06	296-49-40	1.072	0.484	-0.957	-110688.533	-4660.249	227.143	109.937212
S51	S50	184-20-25	301-10-05	1.059	0.548	-0.906	-110687.985	-4661.155	225.280	123.453440
S50	S49	182-31-19	303-41-24	0.480	0.266	-0.399	-110687.719	-4661.554	223.975	59.577350
S49	S48	181-04-32	304-45-56	1.182	0.674	-0.971	-110687.045	-4662.525	222.605	150.035770
S48	S47	179-48-19	304-34-15	0.379	0.215	-0.312	-110686.830	-4662.837	221.322	47.584230
S47	S46	181-42-19	306-16-34	1.930	1.142	-1.556	-110685.688	-4664.393	219.454	250.616468
S46	S45	181-51-46	308-08-20	1.941	1.199	-1.527	-110684.489	-4665.920	216.371	259.428829
S45	S44	182-58-40	311-07-00	1.942	1.277	-1.463	-110683.212	-4667.383	213.381	272.487537
S44	S43	181-47-35	312-54-35	1.939	1.320	-1.420	-110681.892	-4668.803	210.498	277.857360
S43	S42	182-15-31	315-10-06	1.925	1.365	-1.357	-110680.527	-4670.160	207.721	283.539165
S42	S41	181-46-30	316-56-36	1.939	1.417	-1.324	-110679.110	-4671.484	205.040	290.541680
S41	S40	182-31-32	319-28-08	1.951	1.483	-1.268	-110677.627	-4672.752	202.448	300.230384

器械点	視準点	内角	方向角	距離	緯距	經距	X座標	Y座標	倍橫距	倍面積
S40	S39	182-58-18	322-26-26	0.382	0.303	-0.233	-110677.324	-4672.985	200.947	60.886941
S39	S38	178-24-25	320-50-51	7.191	5.576	-4.540	-110671.748	-4677.525	196.174	1093.866224
S38	S37	179-50-45	320-41-36	0.235	0.182	-0.149	-110671.566	-4677.674	191.485	34.850270
S37	S36	175-03-42	315-45-18	0.483	0.346	-0.337	-110671.220	-4678.011	190.999	66.085654
S36	S35	171-48-24	307-33-42	0.497	0.303	-0.394	-110670.917	-4678.405	190.268	57.651204
S35	S34	176-21-03	303-54-45	0.500	0.279	-0.415	-110670.638	-4678.820	189.459	52.859061
S34	S33	171-37-13	295-31-58	0.496	0.214	-0.448	-110670.424	-4679.268	188.596	40.359544
S33	S32	176-54-54	292-26-52	0.230	0.088	-0.213	-110670.336	-4679.481	187.935	16.538280
S32	S31	177-44-07	290-10-59	11.237	3.877	-10.547	-110666.459	-4690.028	177.175	686.907475
S31	S30	180-04-20	290-15-19	0.557	0.193	-0.523	-110666.266	-4690.551	166.105	32.058265
S30	S29	181-04-15	291-19-34	1.925	0.700	-1.793	-110665.566	-4692.344	163.789	114.652300
S29	S28	182-40-20	293-59-54	1.947	0.792	-1.779	-110664.774	-4694.123	160.217	126.891864
S28	S27	182-37-58	296-37-52	1.941	0.870	-1.735	-110663.904	-4695.858	156.703	136.331610
S27	S26	181-53-39	298-31-31	1.935	0.924	-1.700	-110662.980	-4697.558	153.268	141.619632
S26	S25	182-21-07	300-52-38	1.933	0.992	-1.659	-110661.988	-4699.217	149.909	148.709728
S25	S24	181-49-21	302-41-59	1.942	1.049	-1.634	-110660.939	-4700.851	146.616	153.800184
S24	S23	182-21-20	305-03-19	1.933	1.110	-1.582	-110659.829	-4702.433	143.400	159.174000
S23	S22	182-23-23	307-26-42	1.952	1.187	-1.550	-110658.642	-4703.983	140.268	166.498116
S22	S21	182-19-07	309-45-49	1.921	1.229	-1.477	-110657.413	-4705.460	137.241	168.669189
S21	S20	180-54-15	310-40-04	0.562	0.366	-0.426	-110657.047	-4705.886	135.338	49.533708
S20	S19	180-35-15	311-15-19	2.956	1.949	-2.222	-110655.098	-4708.108	132.690	258.612810
S19	S18	182-01-54	313-17-13	1.088	0.746	-0.792	-110654.352	-4708.900	129.676	96.738296
S18	S17	183-53-43	317-10-56	1.077	0.790	-0.732	-110653.562	-4709.632	128.152	101.240080
S17	S16	184-55-09	322-06-05	1.070	0.844	-0.657	-110652.718	-4710.289	126.763	106.987972
S16	S15	182-59-57	325-06-02	1.064	0.873	-0.609	-110651.845	-4710.898	125.497	109.558881
S15	S14	184-34-52	329-40-54	1.066	0.920	-0.538	-110650.925	-4711.436	124.350	114.402000
S14	S13	182-58-18	332-39-12	1.082	0.961	-0.497	-110649.964	-4711.933	123.315	118.505715
S13	S12	182-18-19	334-57-31	4.373	3.962	-1.851	-110646.002	-4713.784	120.967	479.271254

器械点	視準点	内角	方向角	距離	緯距	經距	X座標	Y座標	倍橫距	倍面積
S12	S11	175-34-19	330-31-50	1.006	0.876	-0.495	-110645.126	-4714.279	118.621	103.911996
S11	S10	177-49-20	328-21-10	0.848	0.722	-0.445	-110644.404	-4714.724	117.681	84.965682
S10	S9	174-46-38	323-07-48	0.790	0.632	-0.474	-110643.772	-4715.198	116.762	73.793584
S9	S8	173-13-49	316-21-37	0.804	0.582	-0.555	-110643.190	-4715.753	115.733	67.356606
S8	S7	174-54-18	311-15-55	0.814	0.537	-0.612	-110642.653	-4716.365	114.566	61.521942
S7	S6	176-09-24	307-25-19	0.810	0.492	-0.643	-110642.161	-4717.008	113.311	55.749012
S6	S5	173-41-25	301-06-44	0.993	0.513	-0.850	-110641.648	-4717.858	111.818	57.362634
S5	S4	177-52-03	298-58-47	25.379	12.296	-22.201	-110629.352	-4740.059	88.767	1091.479032
S4	S3	180-33-23	299-32-10	1.225	0.604	-1.066	-110628.748	-4741.125	65.500	39.562000
S3	S2	180-57-41	300-29-51	2.824	1.433	-2.433	-110627.315	-4743.558	62.001	88.847433
S2	S1	181-04-02	301-33-53	1.226	0.642	-1.045	-110626.673	-4744.603	58.523	37.571766
S1	DS2	180-24-55	301-58-48	32.278	17.095	-27.379	-110609.578	-4771.982	30.099	514.542405
DS2	K.92	90-45-43	212-44-31	2.515	-2.115	-1.360	-110611.693	-4773.342	1.360	-2.876400
									倍面積	1341.498184
									面積	670.7490920
									坪数	202.90

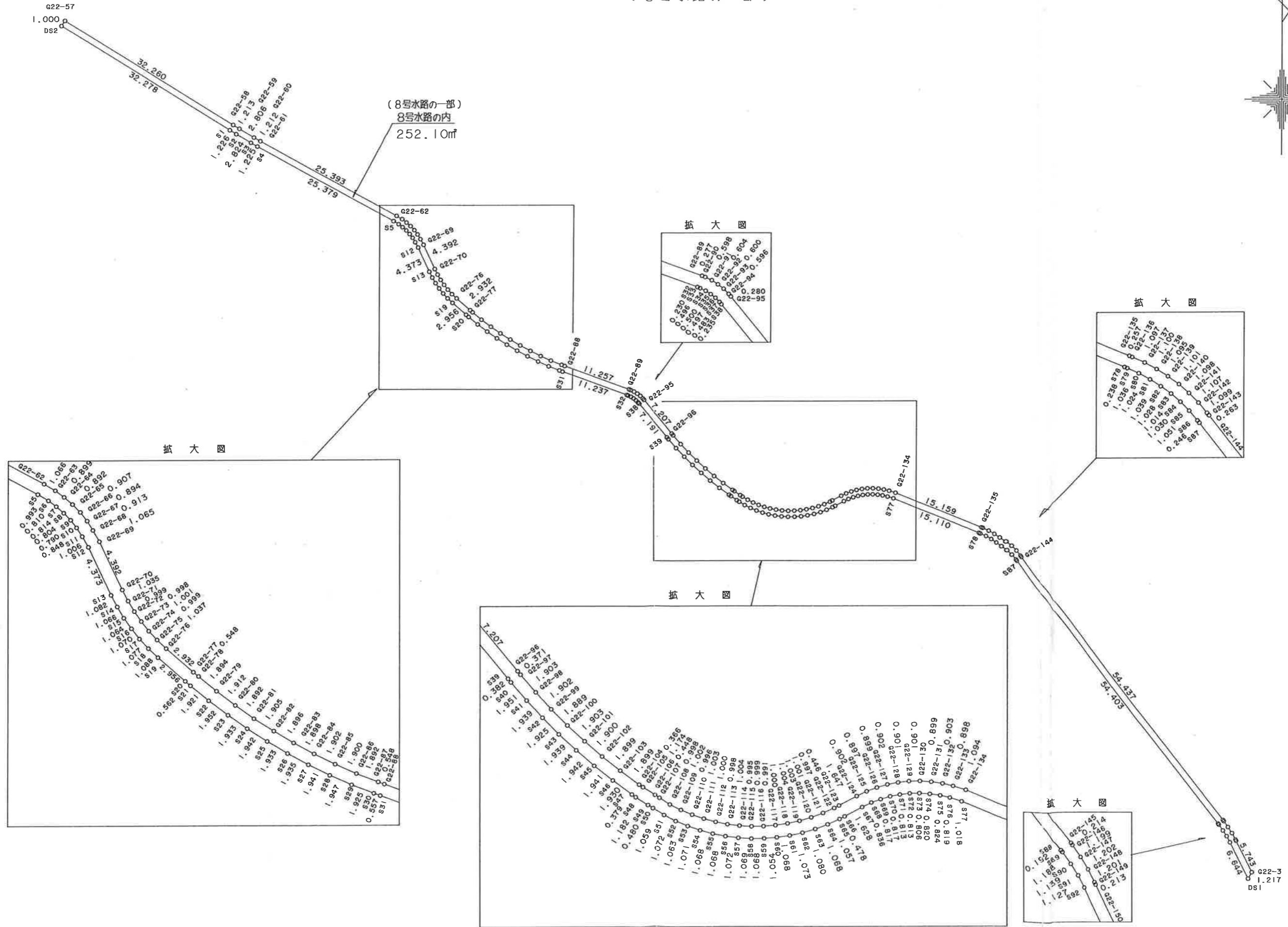
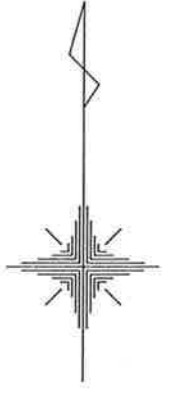


* * 面積計算 (倍横距法) * *

地 器械点	番 : 視準点	1号水路 内角	方向角	距離	緯距	經距	X座標	Y座標	倍横距	倍面積
K.173-1	KK174	121-30-04	153-08-04	12.363	-11.029	5.587	-111159.682	-4528.831	5.587	-61.619023
KK174	KK175	175-46-22	148-54-26	3.501	-2.998	1.808	-111162.680	-4527.023	12.982	-38.920036
KK175	KK176	174-54-13	143-48-39	8.300	-6.699	4.901	-111169.379	-4522.122	19.691	-131.910009
KK176	KK177	178-44-11	142-32-50	10.304	-8.180	6.266	-111177.559	-4515.856	30.858	-252.418440
KK177	KK178	173-17-29	135-50-19	6.135	-4.401	4.274	-111181.960	-4511.582	41.398	-182.192598
KK178	K.179	174-47-03	130-37-22	7.254	-4.723	5.506	-111186.683	-4506.076	51.178	-241.713694
K.179	K.180	177-28-05	128-05-27	16.605	-10.244	13.069	-111196.927	-4493.007	69.753	-714.549732
K.180	K.181	174-30-02	122-35-29	9.141	-4.924	7.702	-111201.851	-4485.305	90.524	-445.740176
K.181	KK182	185-25-42	128-01-11	1.007	-0.620	0.793	-111202.471	-4484.512	99.019	-61.391780
KK182	KK183	186-32-15	134-33-26	2.196	-1.541	1.565	-111204.012	-4482.947	101.377	-156.221957
KK183	KK184	189-49-26	144-22-52	1.557	-1.266	0.907	-111205.278	-4482.040	103.849	-131.472834
KK184	KK185	190-20-57	154-43-49	2.354	-2.129	1.005	-111207.407	-4481.035	105.761	-225.165169
KK185	KK186	187-55-43	162-39-32	0.530	-0.506	0.158	-111207.913	-4480.877	106.924	-54.103544
KK186	2G-2	70-37-32	53-17-04	3.116	1.863	2.498	-111206.050	-4478.379	109.580	204.147540
2G-2	2H-22	105-25-55	338-42-59	1.253	1.168	-0.455	-111204.882	-4478.834	111.623	130.375664
2H-22	2H-21	173-48-38	332-31-37	1.439	1.277	-0.664	-111203.605	-4479.498	110.504	141.113608
2H-21	2H-20	173-19-57	325-51-34	1.411	1.168	-0.792	-111202.437	-4480.290	109.048	127.368064
2H-20	2H-19	174-25-11	320-16-45	1.383	1.064	-0.884	-111201.373	-4481.174	107.372	114.243808
2H-19	2H-18	172-36-14	312-52-59	2.106	1.433	-1.543	-111199.940	-4482.717	104.945	150.386185
2H-18	2H-17	173-19-49	306-12-48	1.745	1.031	-1.408	-111198.909	-4484.125	101.994	105.155814
2H-17	2H-16	175-09-13	301-22-01	4.728	2.461	-4.037	-111196.448	-4488.162	96.549	237.607089
2H-16	2H-15	182-06-19	303-28-20	3.648	2.012	-3.043	-111194.436	-4491.205	89.469	180.011628
2H-15	2H-14	182-01-35	305-29-55	3.067	1.781	-2.497	-111192.655	-4493.702	83.929	149.477549
2H-14	2H-13	182-23-49	307-53-44	7.598	4.667	-5.996	-111187.988	-4499.698	75.436	352.059812
2H-13	2H-12	181-59-15	309-52-59	4.828	3.096	-3.705	-111184.892	-4503.403	65.735	203.515560
2H-12	2H-11	179-33-56	309-26-55	3.823	2.429	-2.952	-111182.463	-4506.355	59.078	143.500462
2H-11	2H-10	181-48-42	311-15-37	3.990	2.631	-2.999	-111179.832	-4509.354	53.127	139.777137

器械点	視準点	内角	方向角	距離	緯距	經距	X座標	Y座標	倍橫距	倍面積
2H-10	2H-9	183-40-00	314-55-37	3.326	2.349	-2.355	-111177.483	-4511.709	47.773	112.218777
2H-9	2H-8	184-42-11	319-37-48	1.612	1.228	-1.044	-111176.255	-4512.753	44.374	54.491272
2H-8	2H-7	182-30-23	322-08-11	16.375	12.928	-10.051	-111163.327	-4522.804	33.279	430.230912
2H-7	2H-6	182-42-25	324-50-36	2.081	1.701	-1.198	-111161.626	-4524.002	22.030	37.473030
2H-6	2H-5	182-34-50	327-25-26	4.736	3.991	-2.550	-111157.635	-4526.552	18.282	72.963462
2H-5	2H-4	184-13-14	331-38-40	2.476	2.179	-1.176	-111155.456	-4527.728	14.556	31.717524
2H-4	2H-3	182-19-42	333-58-22	5.479	4.923	-2.404	-111150.533	-4530.132	10.976	54.034848
2H-3	2G-1	177-43-48	331-42-10	5.356	4.716	-2.539	-111145.817	-4532.671	6.033	28.451628
2G-1	K.173-1	59-55-50	211-38-00	3.331	-2.836	-1.747	-111148.653	-4534.418	1.747	-4.954492
									倍面積	497.947889
									面積	248.9739445
									坪数	75.31

8号水路の内
(8号水路の一部)



* * 面積計算 (倍横距法) * *

地 器械点	番 : 8号水路の内 視準点 内角	方向角	距離	緯距	経距	X座標	Y座標	倍横距	倍面積	
DS2	S1	89-13-39	121-58-48	32.278	-17.095	27.379	-110626.673	-4744.603	27.379	-468.044005
S1	S2	179-35-05	121-33-53	1.226	-0.642	1.045	-110627.315	-4743.558	55.803	-35.825526
S2	S3	178-55-58	120-29-51	2.824	-1.433	2.433	-110628.748	-4741.125	59.281	-84.949673
S3	S4	179-02-19	119-32-10	1.225	-0.604	1.066	-110629.352	-4740.059	62.780	-37.919120
S4	S5	179-26-37	118-58-47	25.379	-12.296	22.201	-110641.648	-4717.858	86.047	-1058.033912
S5	S6	182-07-57	121-06-44	0.993	-0.513	0.850	-110642.161	-4717.008	109.098	-55.967274
S6	S7	186-18-35	127-25-19	0.810	-0.492	0.643	-110642.653	-4716.365	110.591	-54.410772
S7	S8	183-50-36	131-15-55	0.814	-0.537	0.612	-110643.190	-4715.753	111.846	-60.061302
S8	S9	185-05-42	136-21-37	0.804	-0.582	0.555	-110643.772	-4715.198	113.013	-65.773566
S9	S10	186-46-11	143-07-48	0.790	-0.632	0.474	-110644.404	-4714.724	114.042	-72.074544
S10	S11	185-13-22	148-21-10	0.848	-0.722	0.445	-110645.126	-4714.279	114.961	-83.001842
S11	S12	182-10-40	150-31-50	1.006	-0.876	0.495	-110646.002	-4713.784	115.901	-101.529276
S12	S13	184-25-41	154-57-31	4.373	-3.962	1.851	-110649.964	-4711.933	118.247	-468.494614
S13	S14	177-41-41	152-39-12	1.082	-0.961	0.497	-110650.925	-4711.436	120.595	-115.891795
S14	S15	177-01-42	149-40-54	1.066	-0.920	0.538	-110651.845	-4710.898	121.630	-111.899600
S15	S16	175-25-08	145-06-02	1.064	-0.873	0.609	-110652.718	-4710.289	122.777	-107.184321
S16	S17	177-00-03	142-06-05	1.070	-0.844	0.657	-110653.562	-4709.632	124.043	-104.692292
S17	S18	175-04-51	137-10-56	1.077	-0.790	0.732	-110654.352	-4708.900	125.432	-99.091280
S18	S19	176-06-17	133-17-13	1.088	-0.746	0.792	-110655.098	-4708.108	126.956	-94.709176
S19	S20	177-58-06	131-15-19	2.956	-1.949	2.222	-110657.047	-4705.886	129.970	-253.311530
S20	S21	179-24-45	130-40-04	0.562	-0.366	0.426	-110657.413	-4705.460	132.618	-48.538188
S21	S22	179-05-45	129-45-49	1.921	-1.229	1.477	-110658.642	-4703.983	134.521	-165.326309
S22	S23	177-40-53	127-26-42	1.952	-1.187	1.550	-110659.829	-4702.433	137.548	-163.269476
S23	S24	177-36-37	125-03-19	1.933	-1.110	1.582	-110660.939	-4700.851	140.680	-156.154800
S24	S25	177-38-40	122-41-59	1.942	-1.049	1.634	-110661.988	-4699.217	143.896	-150.946904
S25	S26	178-10-39	120-52-38	1.933	-0.992	1.659	-110662.980	-4697.558	147.189	-146.011488
S26	S27	177-38-53	118-31-31	1.935	-0.924	1.700	-110663.904	-4695.858	150.548	-139.106352

器械点	视準点	内角	方向角	距離	緯距	經距	X座標	Y座標	倍橫距	倍面積
S27	S28	178-06-21	116-37-52	1.941	-0.870	1.735	-110664.774	-4694.123	153.983	-133.965210
S28	S29	177-22-02	113-59-54	1.947	-0.792	1.779	-110665.566	-4692.344	157.497	-124.737624
S29	S30	177-19-40	111-19-34	1.925	-0.700	1.793	-110666.266	-4690.551	161.069	-112.748300
S30	S31	178-55-45	110-15-19	0.557	-0.193	0.523	-110666.459	-4690.028	163.385	-31.533305
S31	S32	179-55-40	110-10-59	11.237	-3.877	10.547	-110670.336	-4679.481	174.455	-676.362035
S32	S33	182-15-53	112-26-52	0.230	-0.088	0.213	-110670.424	-4679.268	185.215	-16.298920
S33	S34	183-05-06	115-31-58	0.496	-0.214	0.448	-110670.638	-4678.820	185.876	-39.777464
S34	S35	188-22-47	123-54-45	0.500	-0.279	0.415	-110670.917	-4678.405	186.739	-52.100181
S35	S36	183-38-57	127-33-42	0.497	-0.303	0.394	-110671.220	-4678.011	187.548	-56.827044
S36	S37	188-11-36	135-45-18	0.483	-0.346	0.337	-110671.566	-4677.674	188.279	-65.144534
S37	S38	184-56-18	140-41-36	0.235	-0.182	0.149	-110671.748	-4677.525	188.765	-34.355230
S38	S39	180-09-15	140-50-51	7.191	-5.576	4.540	-110677.324	-4672.985	193.454	-1078.699504
S39	S40	181-35-35	142-26-26	0.382	-0.303	0.233	-110677.627	-4672.752	198.227	-60.062781
S40	S41	177-01-42	139-28-08	1.951	-1.483	1.268	-110679.110	-4671.484	199.728	-296.196624
S41	S42	177-28-28	136-56-36	1.939	-1.417	1.324	-110680.527	-4670.160	202.320	-286.687440
S42	S43	178-13-30	135-10-06	1.925	-1.365	1.357	-110681.892	-4668.803	205.001	-279.826365
S43	S44	177-44-29	132-54-35	1.939	-1.320	1.420	-110683.212	-4667.383	207.778	-274.266960
S44	S45	178-12-25	131-07-00	1.942	-1.277	1.463	-110684.489	-4665.920	210.661	-269.014097
S45	S46	177-01-20	128-08-20	1.941	-1.199	1.527	-110685.688	-4664.393	213.651	-256.167549
S46	S47	178-08-14	126-16-34	1.930	-1.142	1.556	-110686.830	-4662.837	216.734	-247.510228
S47	S48	178-17-41	124-34-15	0.379	-0.215	0.312	-110687.045	-4662.525	218.602	-46.999430
S48	S49	180-11-41	124-45-56	1.182	-0.674	0.971	-110687.719	-4661.554	219.885	-148.202490
S49	S50	178-55-28	123-41-24	0.480	-0.266	0.399	-110687.985	-4661.155	221.255	-58.853830
S50	S51	177-28-41	121-10-05	1.059	-0.548	0.906	-110688.533	-4660.249	222.560	-121.962880
S51	S52	175-39-35	116-49-40	1.072	-0.484	0.957	-110689.017	-4659.292	224.423	-108.620732
S52	S53	176-12-54	113-02-34	1.063	-0.416	0.978	-110689.433	-4658.314	226.358	-94.164928
S53	S54	176-09-14	109-11-48	1.071	-0.352	1.011	-110689.785	-4657.303	228.347	-80.378144
S54	S55	176-06-54	105-18-42	1.068	-0.282	1.030	-110690.067	-4656.273	230.388	-64.969416

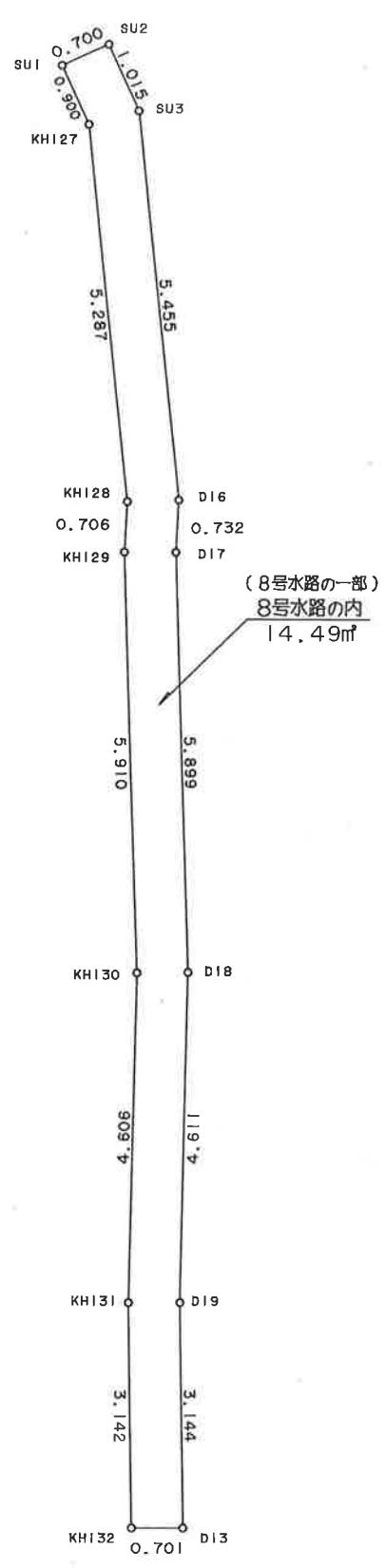
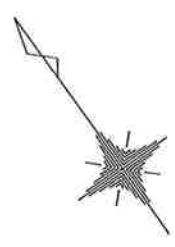
器械点	視準点	内角	方向角	距離	緯距	經距	X座標	Y座標	倍横距	倍面積
S55	S56	176-04-57	101-23-39	1.068	-0.211	1.047	-110690.278	-4655.226	232.465	-49.050115
S56	S57	175-47-02	97-10-41	1.072	-0.134	1.064	-110690.412	-4654.162	234.576	-31.433184
S57	S58	176-21-41	93-32-22	1.069	-0.066	1.067	-110690.478	-4653.095	236.707	-15.622662
S58	S59	175-10-24	88-42-46	1.068	0.024	1.068	-110690.454	-4652.027	238.842	5.732208
S59	S60	176-56-04	85-38-50	1.054	0.080	1.051	-110690.374	-4650.976	240.961	19.276880
S60	S61	175-50-36	81-29-26	1.068	0.158	1.056	-110690.216	-4649.920	243.068	38.404744
S61	S62	176-27-21	77-56-47	1.073	0.224	1.049	-110689.992	-4648.871	245.173	54.918752
S62	S63	175-35-54	73-32-41	1.080	0.306	1.036	-110689.686	-4647.835	247.258	75.660948
S63	S64	175-39-38	69-12-19	1.068	0.379	0.998	-110689.307	-4646.837	249.292	94.481668
S64	S65	176-40-41	65-53-00	1.057	0.432	0.965	-110688.875	-4645.872	251.255	108.542160
S65	S66	176-25-31	62-18-31	0.478	0.222	0.423	-110688.653	-4645.449	252.643	56.086746
S66	S67	179-56-45	62-15-16	1.628	0.758	1.441	-110687.895	-4644.008	254.507	192.916306
S67	S68	182-09-41	64-24-57	0.836	0.361	0.754	-110687.534	-4643.254	256.702	92.669422
S68	S69	185-23-51	69-48-48	0.817	0.282	0.767	-110687.252	-4642.487	258.223	72.818886
S69	S70	183-46-10	73-34-58	0.817	0.231	0.784	-110687.021	-4641.703	259.774	60.007794
S70	S71	185-38-46	79-13-44	0.813	0.152	0.799	-110686.869	-4640.904	261.357	39.726264
S71	S72	184-20-43	83-34-27	0.813	0.091	0.808	-110686.778	-4640.096	262.964	23.929724
S72	S73	185-42-54	89-17-21	0.806	0.010	0.806	-110686.768	-4639.290	264.578	2.645780
S73	S74	185-15-35	94-32-56	0.820	-0.065	0.817	-110686.833	-4638.473	266.201	-17.303065
S74	S75	183-40-46	98-13-42	0.824	-0.118	0.816	-110686.951	-4637.657	267.834	-31.604412
S75	S76	185-24-03	103-37-45	0.819	-0.193	0.796	-110687.144	-4636.861	269.446	-52.003078
S76	S77	183-44-18	107-22-03	1.018	-0.304	0.972	-110687.448	-4635.889	271.214	-82.449056
S77	S78	184-54-36	112-16-39	15.110	-5.728	13.982	-110693.176	-4621.907	286.168	-1639.170304
S78	S79	180-43-53	113-00-32	0.238	-0.093	0.219	-110693.269	-4621.688	300.369	-27.934317
S79	S80	181-30-13	114-30-45	1.036	-0.430	0.943	-110693.699	-4620.745	301.531	-129.658330
S80	S81	185-18-32	119-49-17	1.024	-0.509	0.888	-110694.208	-4619.857	303.362	-154.411258
S81	S82	183-19-05	123-08-22	1.039	-0.568	0.870	-110694.776	-4618.987	305.120	-173.308160
S82	S83	183-14-25	126-22-47	1.028	-0.610	0.828	-110695.386	-4618.159	306.818	-187.158980

器械点	視準点	内角	方向角	距離	緯距	經距	X座標	Y座標	倍横距	倍面積
S83	S84	185-08-28	131-31-15	1.014	-0.672	0.759	-110696.058	-4617.400	308.405	-207.248160
S84	S85	184-25-25	135-56-40	1.030	-0.740	0.716	-110696.798	-4616.684	309.880	-229.311200
S85	S86	184-30-05	140-26-45	1.051	-0.810	0.669	-110697.608	-4616.015	311.265	-252.124650
S86	S87	181-00-13	141-26-58	0.246	-0.192	0.153	-110697.800	-4615.862	312.087	-59.920704
S87	S88	181-05-13	142-32-11	54.403	-43.182	33.091	-110740.982	-4582.771	345.331	-14912.083242
S88	S89	182-51-46	145-23-57	0.192	-0.158	0.109	-110741.140	-4582.662	378.531	-59.807898
S89	S90	179-40-48	145-04-45	1.188	-0.974	0.680	-110742.114	-4581.982	379.320	-369.457680
S90	S91	181-27-15	146-32-00	1.139	-0.950	0.628	-110743.064	-4581.354	380.628	-361.596600
S91	S92	185-45-54	152-17-54	1.127	-0.998	0.524	-110744.062	-4580.830	381.780	-381.016440
S92	DS1	181-43-36	154-01-30	6.644	-5.973	2.910	-110750.035	-4577.920	385.214	-2300.883222
DS1	G22-3	55-11-39	29-13-09	1.217	1.062	0.594	-110748.973	-4577.326	388.718	412.818516
G22-3	G22-150	124-46-41	333-59-50	5.743	5.162	-2.518	-110743.811	-4579.844	386.794	1996.630628
G22-150	G22-149	181-00-08	334-59-58	0.213	0.193	-0.090	-110743.618	-4579.934	384.186	74.147898
G22-149	G22-148	177-18-15	332-18-13	1.201	1.063	-0.558	-110742.555	-4580.492	383.538	407.700894
G22-148	G22-147	174-13-52	326-32-05	1.202	1.003	-0.663	-110741.552	-4581.155	382.317	383.463951
G22-147	G22-146	178-33-20	325-05-25	1.199	0.983	-0.686	-110740.569	-4581.841	380.968	374.491544
G22-146	G22-145	180-10-51	325-16-16	0.214	0.176	-0.122	-110740.393	-4581.963	380.160	66.908160
G22-145	G22-144	177-15-58	322-32-14	54.437	43.209	-33.111	-110697.184	-4615.074	346.927	14990.368743
G22-144	G22-143	178-56-20	321-28-34	0.263	0.206	-0.164	-110696.978	-4615.238	313.652	64.612312
G22-143	G22-142	178-57-07	320-25-41	1.099	0.847	-0.700	-110696.131	-4615.938	312.788	264.931436
G22-142	G22-141	175-31-23	315-57-04	1.107	0.796	-0.770	-110695.335	-4616.708	311.318	247.809128
G22-141	G22-140	175-34-42	311-31-46	1.098	0.728	-0.822	-110694.607	-4617.530	309.726	225.480528
G22-140	G22-139	174-49-50	306-21-36	1.101	0.653	-0.887	-110693.954	-4618.417	308.017	201.135101
G22-139	G22-138	176-47-36	303-09-12	1.095	0.599	-0.917	-110693.355	-4619.334	306.213	183.421587
G22-138	G22-137	176-40-32	299-49-44	1.100	0.547	-0.954	-110692.808	-4620.288	304.342	166.475074
G22-137	G22-136	174-40-48	294-30-32	1.097	0.455	-0.998	-110692.353	-4621.286	302.390	137.587450
G22-136	G22-135	178-22-05	292-52-37	0.257	0.100	-0.237	-110692.253	-4621.523	301.155	30.115500
G22-135	G22-134	179-24-09	292-16-46	15.159	5.747	-14.027	-110686.506	-4635.550	286.891	1648.762577

器械点	視準点	内角	方向角	距離	緯距	經距	X座標	Y座標	倍横距	倍面積
G22-134	G22-133	175-03-43	287-20-29	1.094	0.326	-1.044	-110686.180	-4636.594	271.820	88.613320
G22-133	G22-132	176-18-29	283-38-58	0.898	0.212	-0.873	-110685.968	-4637.467	269.903	57.219436
G22-132	G22-131	174-33-41	278-12-39	0.903	0.129	-0.894	-110685.839	-4638.361	268.136	34.589544
G22-131	G22-130	176-23-00	274-35-39	0.899	0.072	-0.896	-110685.767	-4639.257	266.346	19.176912
G22-130	G22-129	174-38-34	269-14-13	0.901	-0.012	-0.901	-110685.779	-4640.158	264.549	-3.174588
G22-129	G22-128	174-23-16	263-37-29	0.901	-0.100	-0.895	-110685.879	-4641.053	262.753	-26.275300
G22-128	G22-127	175-34-34	259-12-03	0.902	-0.169	-0.886	-110686.048	-4641.939	260.972	-44.104268
G22-127	G22-126	174-22-51	253-34-54	0.899	-0.254	-0.862	-110686.302	-4642.801	259.224	-65.842896
G22-126	G22-125	176-12-22	249-47-16	0.897	-0.310	-0.842	-110686.612	-4643.643	257.520	-79.831200
G22-125	G22-124	174-40-11	244-27-27	0.902	-0.389	-0.814	-110687.001	-4644.457	255.864	-99.531096
G22-124	G22-123	177-46-45	242-14-12	1.647	-0.767	-1.457	-110687.768	-4645.914	253.593	-194.505831
G22-123	G22-122	180-06-23	242-20-35	0.446	-0.207	-0.395	-110687.975	-4646.309	251.741	-52.110387
G22-122	G22-121	183-33-37	245-54-12	0.997	-0.407	-0.910	-110688.382	-4647.219	250.436	-101.927452
G22-121	G22-120	183-16-22	249-10-34	1.001	-0.356	-0.936	-110688.738	-4648.155	248.590	-88.498040
G22-120	G22-119	184-22-35	253-33-09	1.003	-0.284	-0.962	-110689.022	-4649.117	246.692	-70.060528
G22-119	G22-118	184-22-36	257-55-45	1.004	-0.210	-0.982	-110689.232	-4650.099	244.748	-51.397080
G22-118	G22-117	183-33-36	261-29-21	1.000	-0.148	-0.989	-110689.380	-4651.088	242.777	-35.930996
G22-117	G22-116	184-10-11	265-39-32	0.991	-0.075	-0.988	-110689.455	-4652.076	240.800	-18.060000
G22-116	G22-115	183-04-46	268-44-18	0.999	-0.022	-0.999	-110689.477	-4653.075	238.813	-5.253886
G22-115	G22-114	184-46-37	273-30-55	0.995	0.061	-0.993	-110689.416	-4654.068	236.821	14.446081
G22-114	G22-113	183-41-41	277-12-36	1.004	0.126	-0.996	-110689.290	-4655.064	234.832	29.588832
G22-113	G22-112	184-10-44	281-23-20	0.998	0.197	-0.978	-110689.093	-4656.042	232.858	45.873026
G22-112	G22-111	183-54-41	285-18-01	1.000	0.264	-0.965	-110688.829	-4657.007	230.915	60.961560
G22-111	G22-110	183-51-27	289-09-28	1.003	0.329	-0.947	-110688.500	-4657.954	229.003	75.341987
G22-110	G22-109	183-54-17	293-03-45	0.996	0.390	-0.916	-110688.110	-4658.870	227.140	88.584600
G22-109	G22-108	183-45-30	296-49-15	1.002	0.452	-0.894	-110687.658	-4659.764	225.330	101.849160
G22-108	G22-107	184-22-10	301-11-25	0.998	0.517	-0.854	-110687.141	-4660.618	223.582	115.591894
G22-107	G22-106	182-32-07	303-43-32	0.448	0.249	-0.373	-110686.892	-4660.991	222.355	55.366395

器械点	視準点	内角	方向角	距離	緯距	經距	X座標	Y座標	倍横距	倍面積
G22-106	G22-105	181-00-24	304-43-56	1.174	0.669	-0.965	-110686.223	-4661.956	221.017	147.860373
G22-105	G22-104	179-54-48	304-38-44	0.366	0.208	-0.301	-110686.015	-4662.257	219.751	45.708208
G22-104	G22-103	181-38-21	306-17-05	1.899	1.124	-1.531	-110684.891	-4663.788	217.919	244.940956
G22-103	G22-102	181-51-08	308-08-13	1.899	1.173	-1.494	-110683.718	-4665.282	214.894	252.070662
G22-102	G22-101	182-57-30	311-05-43	1.900	1.249	-1.432	-110682.469	-4666.714	211.968	264.748032
G22-101	G22-100	181-49-06	312-54-49	1.903	1.296	-1.394	-110681.173	-4668.108	209.142	271.048032
G22-100	G22-99	182-15-29	315-10-18	1.889	1.340	-1.332	-110679.833	-4669.440	206.416	276.597440
G22-99	G22-98	181-47-19	316-57-37	1.902	1.390	-1.298	-110678.443	-4670.738	203.786	283.262540
G22-98	G22-97	182-29-38	319-27-15	1.903	1.446	-1.237	-110676.997	-4671.975	201.251	291.008946
G22-97	G22-96	182-59-46	322-27-01	0.371	0.294	-0.226	-110676.703	-4672.201	199.788	58.737672
G22-96	G22-95	178-24-03	320-51-04	7.207	5.589	-4.550	-110671.114	-4676.751	195.012	1089.922068
G22-95	G22-94	179-39-28	320-30-32	0.280	0.216	-0.178	-110670.898	-4676.929	190.284	41.101344
G22-94	G22-93	175-14-19	315-44-51	0.596	0.427	-0.416	-110670.471	-4677.345	189.690	80.997630
G22-93	G22-92	171-48-34	307-33-25	0.600	0.366	-0.476	-110670.105	-4677.821	188.798	69.100068
G22-92	G22-91	176-22-12	303-55-37	0.604	0.337	-0.501	-110669.768	-4678.322	187.821	63.295677
G22-91	G22-90	171-39-07	295-34-44	0.598	0.258	-0.539	-110669.510	-4678.861	186.781	48.189498
G22-90	G22-89	176-54-49	292-29-33	0.277	0.106	-0.256	-110669.404	-4679.117	185.986	19.714516
G22-89	G22-88	177-41-26	290-10-59	11.257	3.884	-10.566	-110665.520	-4689.683	175.164	680.336976
G22-88	G22-87	180-00-20	290-11-19	0.548	0.189	-0.514	-110665.331	-4690.197	164.084	31.011876
G22-87	G22-86	181-08-25	291-19-44	1.892	0.688	-1.762	-110664.643	-4691.959	161.808	111.323904
G22-86	G22-85	182-40-24	294-00-08	1.900	0.773	-1.736	-110663.870	-4693.695	158.310	122.373630
G22-85	G22-84	182-38-37	296-38-45	1.902	0.853	-1.700	-110663.017	-4695.395	154.874	132.107522
G22-84	G22-83	181-51-48	298-30-33	1.898	0.906	-1.668	-110662.111	-4697.063	151.506	137.264436
G22-83	G22-82	182-22-18	300-52-51	1.896	0.973	-1.627	-110661.138	-4698.690	148.211	144.209303
G22-82	G22-81	181-48-59	302-41-50	1.905	1.029	-1.603	-110660.109	-4700.293	144.981	149.185449
G22-81	G22-80	182-22-45	305-04-35	1.892	1.087	-1.548	-110659.022	-4701.841	141.830	154.169210
G22-80	G22-79	182-21-25	307-26-00	1.912	1.162	-1.518	-110657.860	-4703.359	138.764	161.243768
G22-79	G22-78	182-19-05	309-45-05	1.894	1.211	-1.456	-110656.649	-4704.815	135.790	164.441690

器械点	視準点	内角	方向角	距離	緯距	經距	X座標	Y座標	倍橫距	倍面積
G22-78	G22-77	180-53-02	310-38-07	0.548	0.357	-0.416	-110656.292	-4705.231	133.918	47.808726
G22-77	G22-76	180-37-53	311-16-00	2.932	1.934	-2.204	-110654.358	-4707.435	131.298	253.930332
G22-76	G22-75	182-00-51	313-16-51	1.037	0.711	-0.755	-110653.647	-4708.190	128.339	91.249029
G22-75	G22-74	183-54-33	317-11-24	0.999	0.733	-0.679	-110652.914	-4708.869	126.905	93.021365
G22-74	G22-73	184-54-36	322-06-00	1.001	0.790	-0.615	-110652.124	-4709.484	125.611	99.232690
G22-73	G22-72	183-00-58	325-06-58	0.998	0.819	-0.571	-110651.305	-4710.055	124.425	101.904075
G22-72	G22-71	184-31-12	329-38-10	0.999	0.862	-0.505	-110650.443	-4710.560	123.349	106.326838
G22-71	G22-70	183-03-23	332-41-33	1.035	0.920	-0.475	-110649.523	-4711.035	122.369	112.579480
G22-70	G22-69	182-15-55	334-57-28	4.392	3.979	-1.859	-110645.544	-4712.894	120.035	477.619265
G22-69	G22-68	175-33-51	330-31-19	1.065	0.927	-0.524	-110644.617	-4713.418	117.652	109.063404
G22-68	G22-67	177-49-31	328-20-50	0.913	0.777	-0.479	-110643.840	-4713.897	116.649	90.636273
G22-67	G22-66	174-44-40	323-05-30	0.894	0.715	-0.537	-110643.125	-4714.434	115.633	82.677595
G22-66	G22-65	173-17-33	316-23-03	0.907	0.657	-0.626	-110642.468	-4715.060	114.470	75.206790
G22-65	G22-64	174-56-05	311-19-08	0.892	0.589	-0.670	-110641.879	-4715.730	113.174	66.659486
G22-64	G22-63	176-05-11	307-24-19	0.899	0.546	-0.714	-110641.333	-4716.444	111.790	61.037340
G22-63	G22-62	173-42-21	301-06-40	1.066	0.551	-0.913	-110640.782	-4717.357	110.163	60.699813
G22-62	G22-61	177-52-10	298-58-50	25.393	12.303	-22.213	-110628.479	-4739.570	87.037	1070.816211
G22-61	G22-60	180-31-26	299-30-16	1.212	0.597	-1.055	-110627.882	-4740.625	63.769	38.070093
G22-60	G22-59	180-59-24	300-29-40	2.806	1.424	-2.418	-110626.458	-4743.043	60.296	85.861504
G22-59	G22-58	181-03-38	301-33-18	1.213	0.635	-1.034	-110625.823	-4744.077	56.844	36.095940
G22-58	G22-57	180-25-32	301-58-50	32.260	17.086	-27.364	-110608.737	-4771.441	28.446	486.028356
G22-57	DS2	90-46-19	212-45-09	1.000	-0.841	-0.541	-110609.578	-4771.982	0.541	-0.454981
									倍面積	504.210659
									面積	252.1053295
									坪数	76.26



* * 面積計算 (倍横距法) * *

地 器械点	番 : 視準点	8号水路の内 内角	方向角	距離	緯距	経距	X座標	Y座標	倍横距	倍面積
SU1	KH127	90-00-45	191-12-36	0.900	-0.883	-0.175	-110802.854	-4576.778	-0.175	0.154525
KH127	KH128	198-23-42	209-36-18	5.287	-4.597	-2.612	-110807.451	-4579.390	-2.962	13.616314
KH128	KH129	188-57-12	218-33-30	0.706	-0.552	-0.440	-110808.003	-4579.830	-6.014	3.319728
KH129	KH130	175-13-23	213-46-53	5.910	-4.912	-3.286	-110812.915	-4583.116	-9.740	47.842880
KH130	KH131	183-13-58	217-00-51	4.606	-3.678	-2.773	-110816.593	-4585.889	-15.799	58.108722
KH131	KH132	177-44-36	214-45-27	3.142	-2.581	-1.791	-110819.174	-4587.680	-20.363	52.556903
KH132	D13	91-14-45	126-00-12	0.701	-0.412	0.567	-110819.586	-4587.113	-21.587	8.893844
D13	D19	88-44-54	34-45-06	3.144	2.583	1.792	-110817.003	-4585.321	-19.228	-49.665924
D19	D18	182-14-42	36-59-48	4.611	3.683	2.775	-110813.320	-4582.546	-14.661	-53.996463
D18	D17	176-48-24	33-48-12	5.899	4.902	3.282	-110808.418	-4579.264	-8.604	-42.176808
D17	D16	184-42-35	38-30-47	0.732	0.573	0.456	-110807.845	-4578.808	-4.866	-2.788218
D16	SU3	171-05-00	29-35-47	5.455	4.743	2.694	-110803.102	-4576.114	-1.716	-8.138988
SU3	SU2	161-39-29	11-15-16	1.015	0.995	0.198	-110802.107	-4575.916	1.176	1.170120
SU2	SU1	89-56-35	281-11-51	0.700	0.136	-0.687	-110801.971	-4576.603	0.687	0.093432
									倍面積	28.990067
									面積	14.4950335
									坪数	4.38