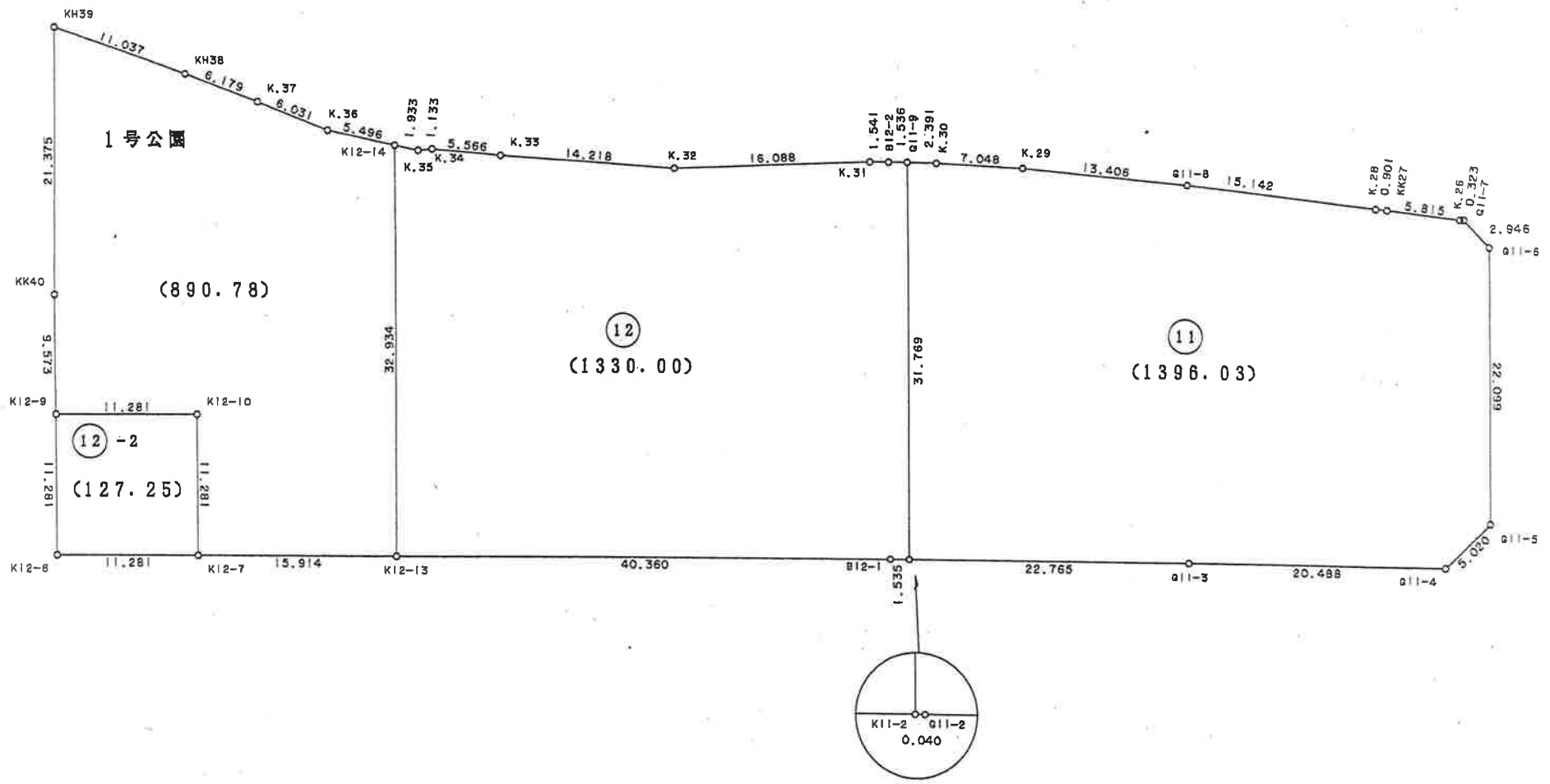
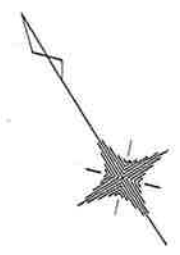


\* \* 面積計算 (倍橫距法) \* \*

地 器械点	番 : G11 視準点	内角	方向角	距離	緯距	經距	X座標	Y座標	倍橫距	倍面積
K11-2	G11-2	90-51-45	122-54-19	0.040	-0.022	0.034	-110732.780	-4367.849	0.034	-0.000748
G11-2	G11-3	179-05-23	121-59-42	22.765	-12.062	19.307	-110744.842	-4348.542	19.375	-233.701250
G11-3	G11-4	180-04-17	122-03-59	20.488	-10.877	17.362	-110755.719	-4331.180	56.044	-609.590588
G11-4	G11-5	135-00-27	77-04-26	5.020	1.123	4.893	-110754.596	-4326.287	78.299	87.929777
G11-5	G11-6	134-55-37	32-00-03	22.099	18.741	11.711	-110735.855	-4314.576	94.903	1778.577123
G11-6	G11-7	137-25-04	349-25-07	2.946	2.896	-0.541	-110732.959	-4315.117	106.073	307.187408
G11-7	K.26	132-56-38	302-21-45	0.323	0.173	-0.273	-110732.786	-4315.390	105.259	18.209807
K.26	KK27	186-12-01	308-33-46	5.815	3.625	-4.547	-110729.161	-4319.937	100.439	364.091375
KK27	K.28	178-16-08	306-49-54	0.901	0.540	-0.721	-110728.621	-4320.658	95.171	51.392340
K.28	G11-8	181-29-07	308-19-01	15.142	9.388	-11.880	-110719.233	-4332.538	82.570	775.167160
G11-8	K.29	178-50-58	307-09-59	13.406	8.099	-10.683	-110711.134	-4343.221	60.007	485.996693
K.29	K.30	177-24-43	304-34-42	7.048	4.000	-5.803	-110707.134	-4349.024	43.521	174.084000
K.30	G11-9	178-29-37	303-04-19	2.391	1.305	-2.004	-110705.829	-4351.028	35.714	46.606770
G11-9	K11-2	88-58-15	212-02-34	31.769	-26.929	-16.855	-110732.758	-4367.883	16.855	-453.888295
									倍面積	2792.061572
									面積	1396.0307860
									坪数	422.29

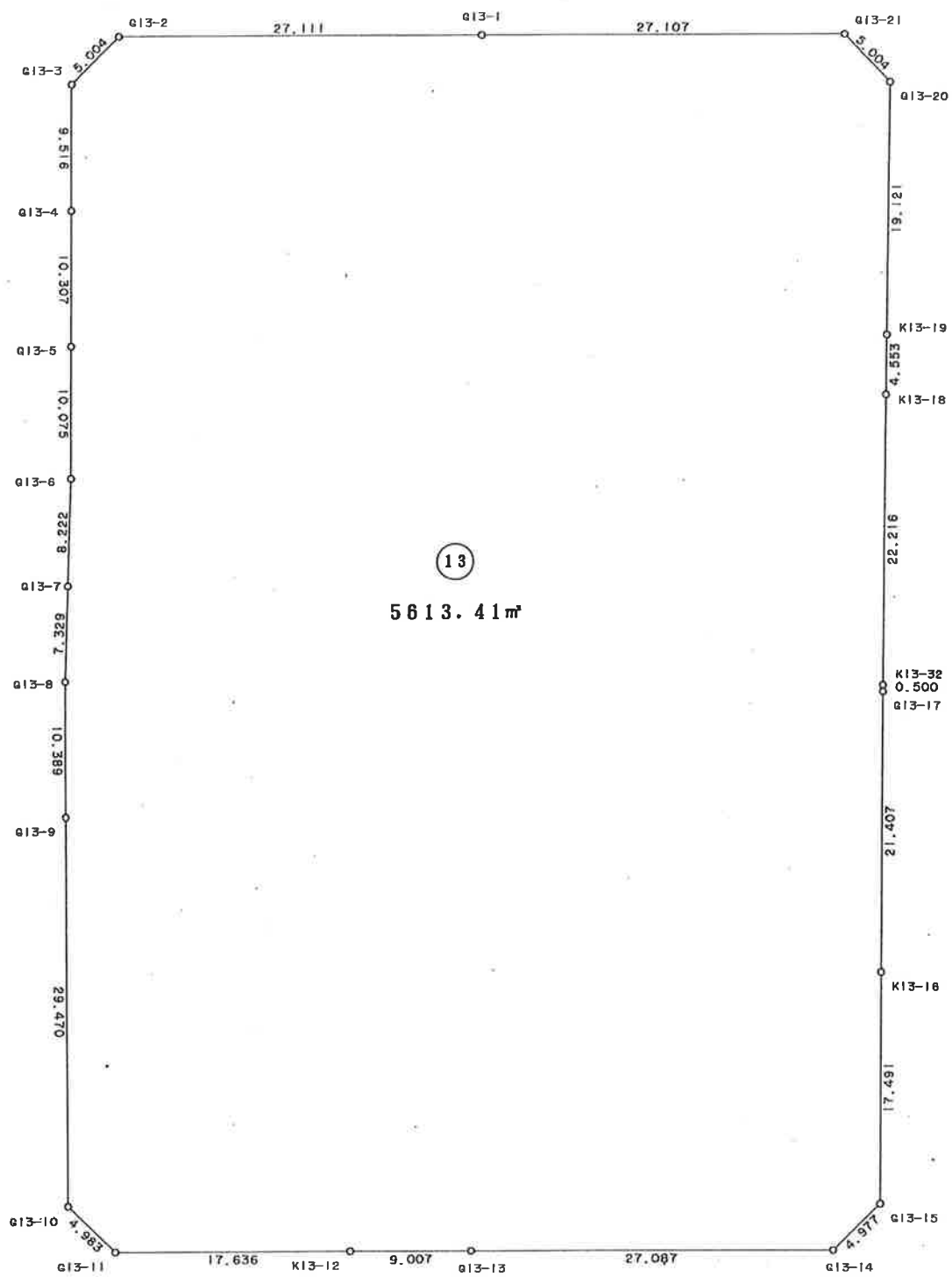
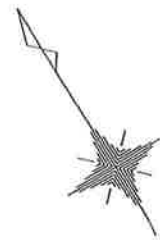


\* \* 面積計算 (倍橫距法) \* \*

地 器械点	番 : G12 視準点	内角	方向角	距離	緯距	經距	X座標	Y座標	倍橫距	倍面積
K12-14	K12-13	77-41-31	212-02-31	32.934	-27.917	-17.473	-110710.561	-4403.414	-17.473	487.793741
K12-13	B12-1	89-57-07	121-59-38	40.360	-21.384	34.229	-110731.945	-4369.185	-0.717	15.321579
B12-1	K11-2	180-00-01	121-59-39	1.535	-0.813	1.302	-110732.758	-4367.883	34.814	-28.306942
K11-2	G11-9	90-02-55	32-02-34	31.769	26.929	16.855	-110705.829	-4351.028	52.971	1426.456059
G11-9	B12-2	89-55-09	301-57-43	1.536	0.813	-1.303	-110705.016	-4352.331	68.523	55.709199
B12-2	K.31	180-00-57	301-58-40	1.541	0.816	-1.307	-110704.200	-4353.638	65.913	53.785008
K.31	K.32	177-44-33	299-43-13	16.088	7.976	-13.972	-110696.224	-4367.610	50.634	403.856784
K.32	K.33	186-19-59	306-03-12	14.218	8.368	-11.495	-110687.856	-4379.105	25.167	210.597456
K.33	K.34	181-05-25	307-08-37	5.566	3.361	-4.437	-110684.495	-4383.542	9.235	31.038835
K.34	K.35	169-02-13	296-10-50	1.133	0.500	-1.017	-110683.995	-4384.559	3.781	1.890500
K.35	K12-14	198-10-10	314-21-00	1.933	1.351	-1.382	-110682.644	-4385.941	1.382	1.867082
									倍面積	2660.009301
									面積	1330.0046505
									坪数	402.32

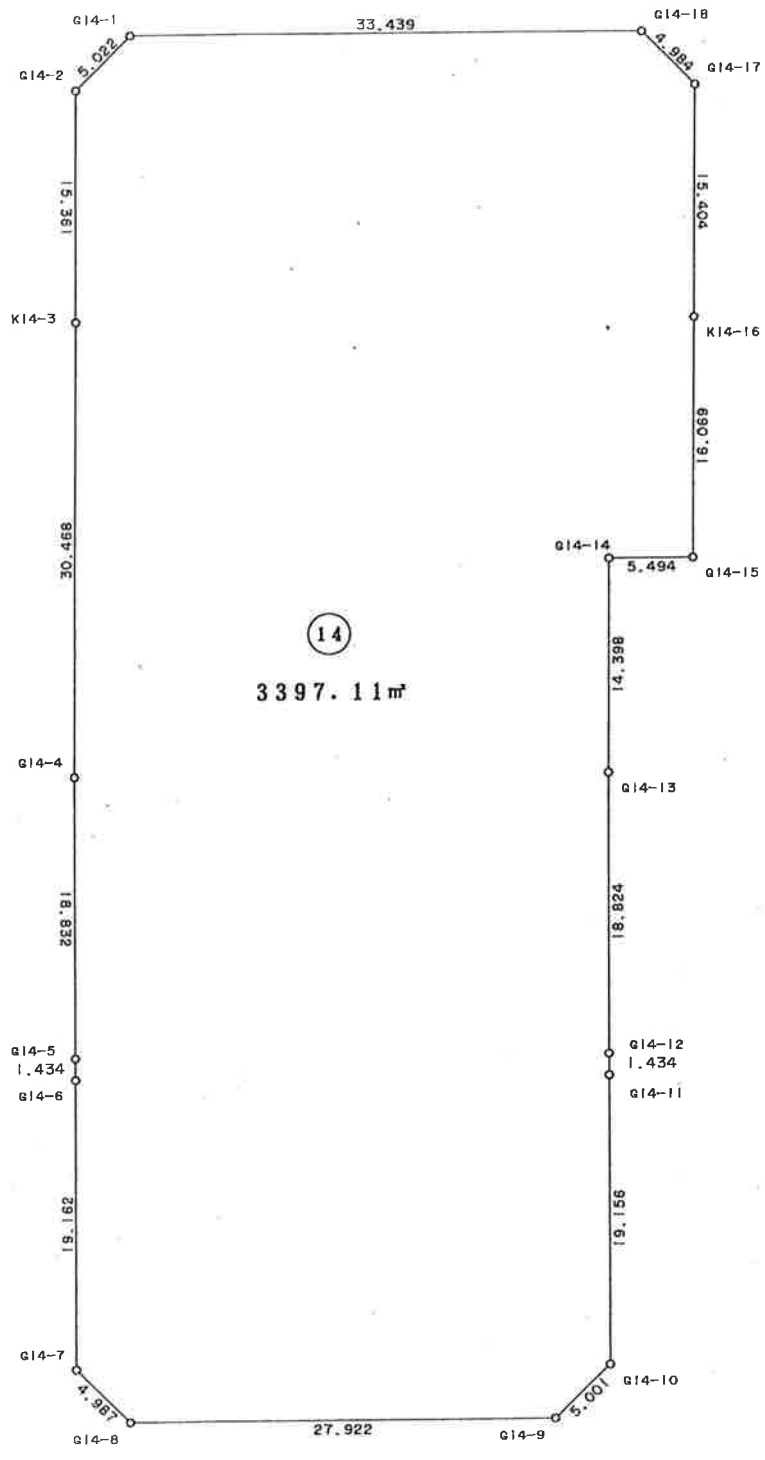
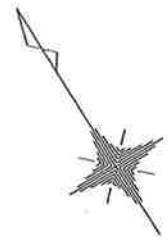
\* \* 面積計算 (倍橫距法) \* \*

地 器械点	番 : 12-2 視準点	内角	方向角	距離	緯距	經距	X座標	Y座標	倍橫距	倍面積
K12-9	K12-6	89-42-19	211-42-02	11.281	-9.598	-5.928	-110696.152	-4426.478	-5.928	56.896944
K12-6	K12-7	90-17-41	121-59-43	11.281	-5.977	9.567	-110702.129	-4416.911	-2.289	13.681353
K12-7	K12-10	89-42-19	31-42-02	11.281	9.598	5.928	-110692.531	-4410.983	13.206	126.751188
K12-10	K12-9	90-17-41	301-59-43	11.281	5.977	-9.567	-110686.554	-4420.550	9.567	57.181959
									倍面積	254.511444
									面積	127.2557220
									坪数	38.49



\* \* 面積計算 (倍橫距法) \* \*

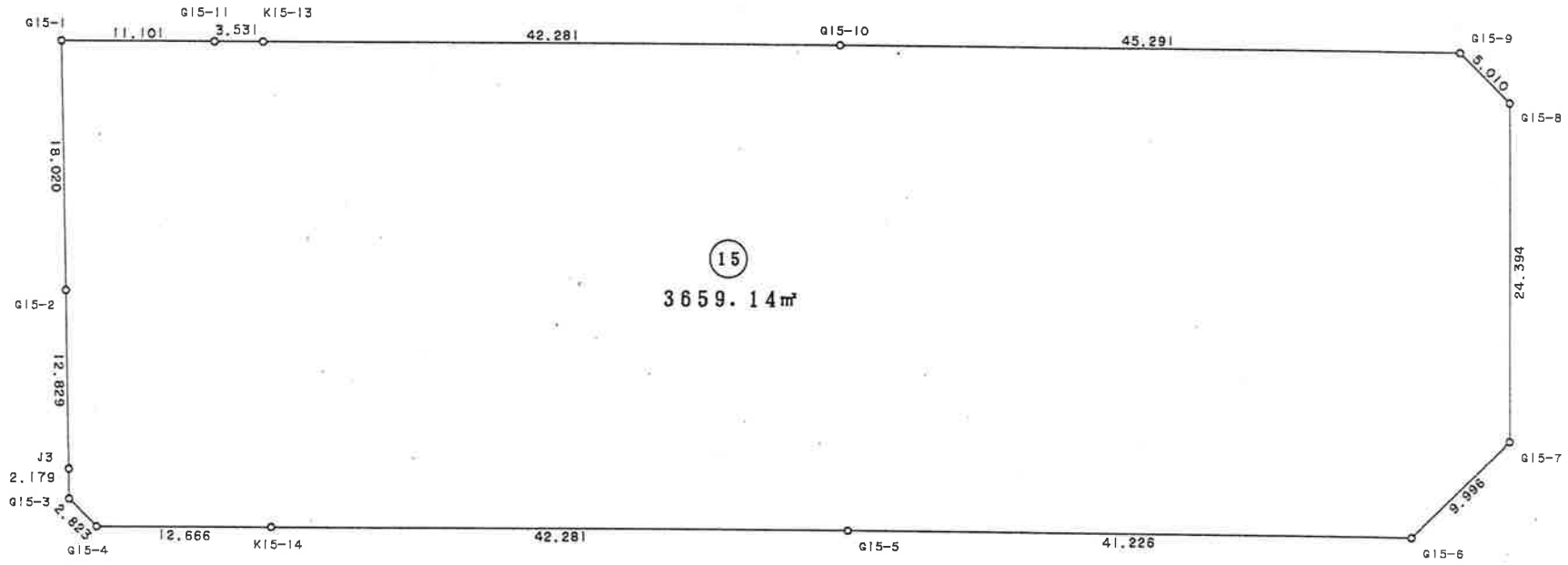
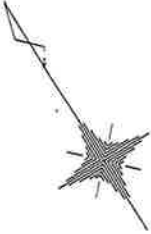
地 器械点	番 : G13 視準点	内角	方向角	距離	緯距	經距	X座標	Y座標	倍橫距	倍面積
G13-1	G13-2	180-04-14	302-01-26	27.111	14.376	-22.985	-110709.437	-4422.160	-22.985	-330.432360
G13-2	G13-3	135-02-33	257-03-59	5.004	-1.120	-4.877	-110710.557	-4427.037	-50.847	56.948640
G13-3	G13-4	134-17-01	211-21-00	9.516	-8.127	-4.951	-110718.684	-4431.988	-60.675	493.105725
G13-4	G13-5	180-03-05	211-24-05	10.307	-8.797	-5.370	-110727.481	-4437.358	-70.996	624.551812
G13-5	G13-6	180-01-57	211-26-02	10.075	-8.596	-5.254	-110736.077	-4442.612	-81.620	701.605520
G13-6	G13-7	181-39-32	213-05-34	8.222	-6.888	-4.489	-110742.965	-4447.101	-91.363	629.308344
G13-7	G13-8	180-00-11	213-05-45	7.329	-6.140	-4.002	-110749.105	-4451.103	-99.854	613.103560
G13-8	G13-9	178-16-01	211-21-46	10.389	-8.871	-5.407	-110757.976	-4456.510	-109.263	969.272073
G13-9	G13-10	180-03-20	211-25-06	29.470	-25.149	-15.362	-110783.125	-4471.872	-130.032	3270.174768
G13-10	G13-11	134-55-09	166-20-15	4.983	-4.842	1.177	-110787.967	-4470.695	-144.217	698.298714
G13-11	K13-12	135-39-33	121-59-48	17.636	-9.345	14.957	-110797.312	-4455.738	-128.083	1196.935635
K13-12	G13-13	179-59-45	121-59-33	9.007	-4.772	7.639	-110802.084	-4448.099	-105.487	503.383964
G13-13	G13-14	180-03-29	122-03-02	27.087	-14.374	22.958	-110816.458	-4425.141	-74.890	1076.468860
G13-14	G13-15	135-13-42	77-16-44	4.977	1.096	4.855	-110815.362	-4420.286	-47.077	-51.596392
G13-15	K13-16	134-43-45	32-00-29	17.491	14.832	9.271	-110800.530	-4411.015	-32.951	-488.729232
K13-16	G13-17	179-59-53	32-00-22	21.407	18.153	11.346	-110782.377	-4399.669	-12.334	-223.899102
G13-17	K13-32	179-59-57	32-00-19	0.500	0.424	0.265	-110781.953	-4399.404	-0.723	-0.306552
K13-32	K13-18	180-00-26	32-00-45	22.216	18.838	11.777	-110763.115	-4387.627	11.319	213.227322
K13-18	K13-19	179-59-30	32-00-15	4.553	3.861	2.413	-110759.254	-4385.214	25.509	98.490249
K13-19	G13-20	180-00-31	32-00-46	19.121	16.213	10.136	-110743.041	-4375.078	38.058	617.034354
G13-20	G13-21	135-19-23	347-20-09	5.004	4.882	-1.097	-110738.159	-4376.175	47.097	229.927554
G13-21	G13-1	134-37-03	301-57-12	27.107	14.346	-23.000	-110723.813	-4399.175	23.000	329.958000
									倍面積	11226.831456
									面積	5613.4157280
									坪数	1698.05





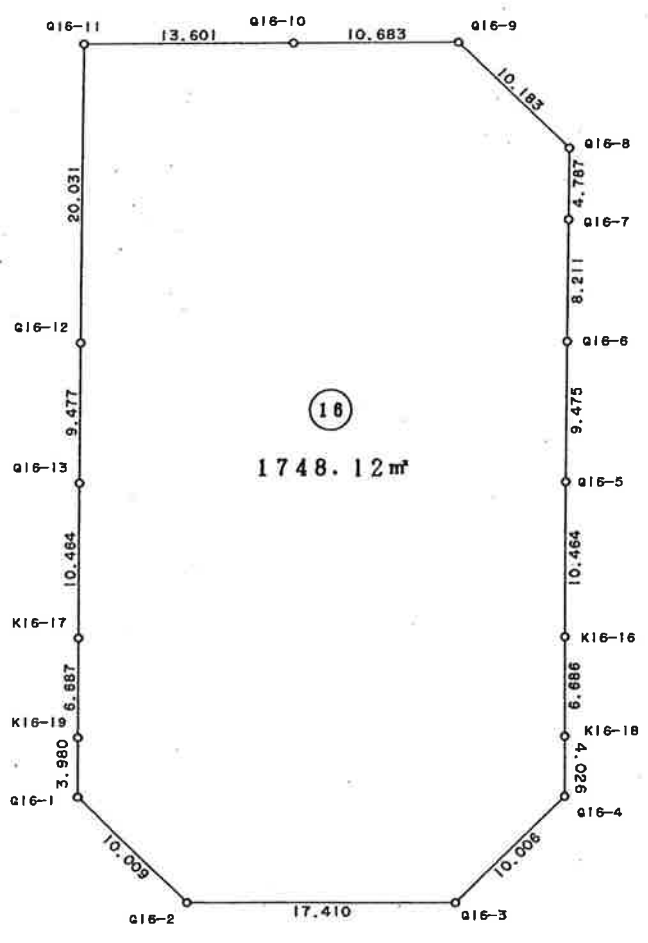
\* \* 面積計算 (倍橫距法) \* \*

地 器械点	番 : G14 視準点	内角	方向角	距離	緯距	經距	X座標	Y座標	倍橫距	倍面積
G14-1	G14-2	134-47-04	256-48-38	5.022	-1.146	-4.890	-110746.757	-4369.161	-4.890	5.603940
G14-2	K14-3	135-01-05	211-49-43	15.361	-13.051	-8.101	-110759.808	-4377.262	-17.881	283.364931
K14-3	G14-4	180-13-02	212-02-45	30.468	-25.825	-16.166	-110785.633	-4393.428	-42.148	1088.472100
G14-4	G14-5	179-54-05	211-56-50	18.832	-15.980	-9.965	-110801.613	-4403.393	-68.279	1091.098420
G14-5	G14-6	180-06-48	212-03-38	1.434	-1.215	-0.761	-110802.828	-4404.154	-79.005	95.991075
G14-6	G14-7	180-02-37	212-06-15	19.162	-16.232	-10.184	-110819.060	-4414.338	-89.950	1460.068400
G14-7	G14-8	134-56-27	167-02-42	4.987	-4.860	1.118	-110823.920	-4413.220	-99.016	481.217760
G14-8	G14-9	134-59-32	122-02-14	27.922	-14.812	23.670	-110838.732	-4389.550	-74.228	1099.465136
G14-9	G14-10	134-50-37	76-52-51	5.001	1.135	4.870	-110837.597	-4384.680	-45.688	-51.855880
G14-10	G14-11	135-09-00	32-01-51	19.156	16.240	10.160	-110821.357	-4374.520	-30.658	-497.885920
G14-11	G14-12	179-47-48	31-49-39	1.434	1.218	0.756	-110820.139	-4373.764	-19.742	-24.045756
G14-12	G14-13	180-13-04	32-02-43	18.824	15.956	9.988	-110804.183	-4363.776	-8.998	-143.572088
G14-13	G14-14	179-59-48	32-02-31	14.398	12.205	7.639	-110791.978	-4356.137	8.629	105.316945
G14-14	G14-15	269-53-42	121-56-13	5.494	-2.906	4.662	-110794.884	-4351.475	20.930	-60.822580
G14-15	K14-16	90-05-40	32-01-53	16.069	13.623	8.523	-110781.261	-4342.952	34.115	464.748645
K14-16	G14-17	179-58-11	32-00-04	15.404	13.063	8.163	-110768.198	-4334.789	50.801	663.613463
G14-17	G14-18	134-52-18	346-52-22	4.984	4.854	-1.132	-110763.344	-4335.921	57.832	280.716528
G14-18	G14-1	135-09-12	302-01-34	33.439	17.733	-28.350	-110745.611	-4364.271	28.350	502.730550
									倍面積	6794.225669
									面積	3397.1128345
									坪数	1027.62



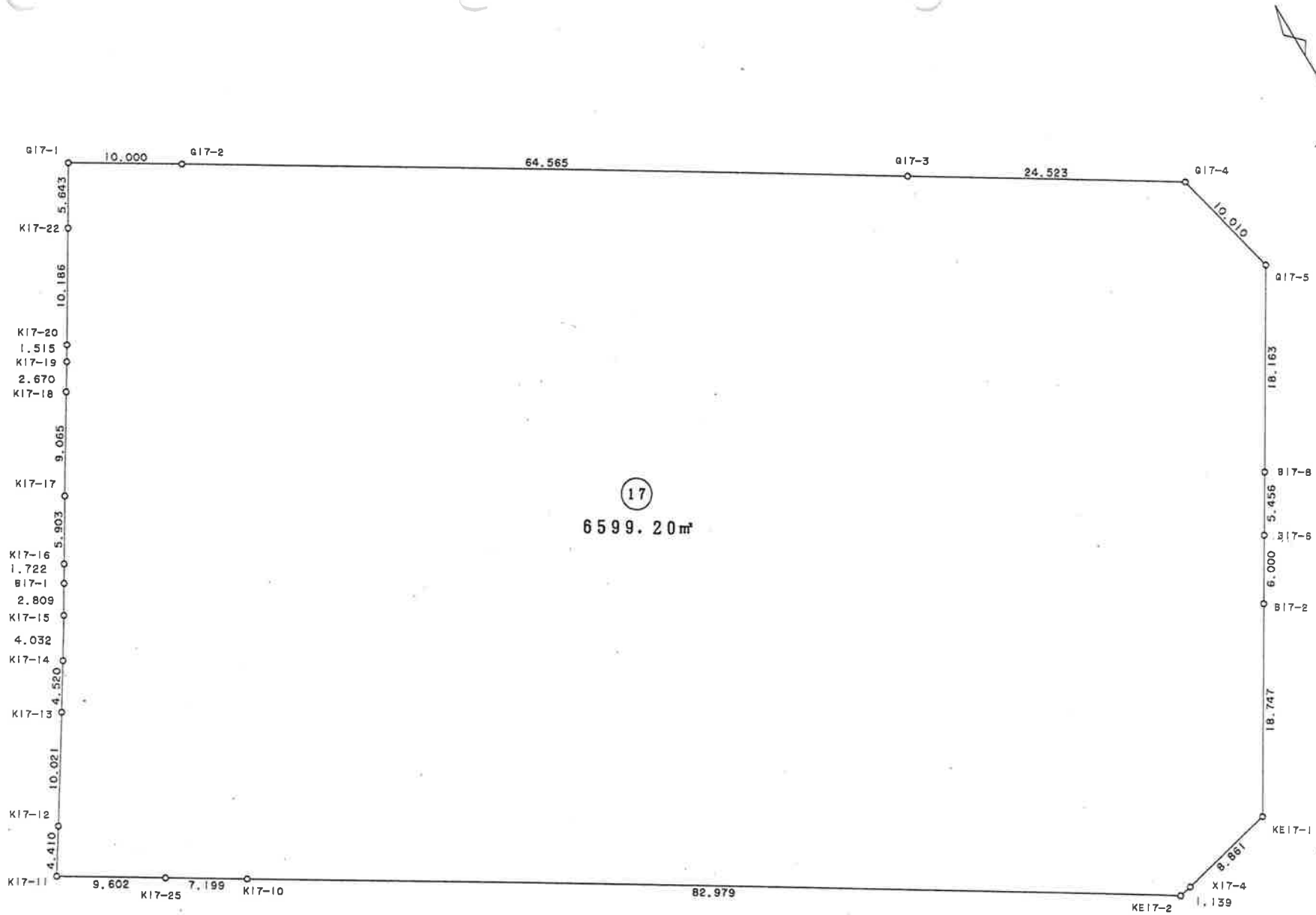
\* \* 面積計算 (倍橫距法) \* \*

地 器械点	番 : G15 視準点	内角	方向角	距離	緯距	經距	X座標	Y座標	倍橫距	倍面積
G15-1	G15-2	89-06-08	211-08-04	18.020	-15.424	-9.317	-110805.906	-4489.226	-9.317	143.705408
G15-2	J3	180-00-34	211-08-38	12.829	-10.980	-6.635	-110816.886	-4495.861	-25.269	277.453620
J3	G15-3	180-00-01	211-08-39	2.179	-1.865	-1.127	-110818.751	-4496.988	-33.031	61.602815
G15-3	G15-4	135-45-01	166-53-40	2.823	-2.749	0.640	-110821.500	-4496.348	-33.518	92.140982
G15-4	K15-14	135-07-00	122-00-40	12.666	-6.714	10.740	-110828.214	-4485.608	-22.138	148.634532
K15-14	G15-5	180-00-02	122-00-42	42.281	-22.413	35.852	-110850.627	-4449.756	24.454	-548.087502
G15-5	G15-6	179-59-40	122-00-22	41.226	-21.850	34.959	-110872.477	-4414.797	95.265	-2081.540250
G15-6	G15-7	135-00-11	77-00-33	9.996	2.247	9.740	-110870.230	-4405.057	139.964	314.499108
G15-7	G15-8	135-00-49	32-01-22	24.394	20.682	12.935	-110849.548	-4392.122	162.639	3363.699798
G15-8	G15-9	134-58-42	347-00-04	5.010	4.882	-1.127	-110844.666	-4393.249	174.447	851.650254
G15-9	G15-10	135-00-08	302-00-12	45.291	24.003	-38.408	-110820.663	-4431.657	134.912	3238.292736
G15-10	K15-13	180-01-16	302-01-28	42.281	22.421	-35.847	-110798.242	-4467.504	60.657	1359.990597
K15-13	G15-11	179-59-29	302-00-57	3.531	1.872	-2.994	-110796.370	-4470.498	21.816	40.839552
G15-11	G15-1	180-00-59	302-01-56	11.101	5.888	-9.411	-110790.482	-4479.909	9.411	55.411968
									倍面積	7318.293618
									面積	3659.1468090
									坪数	1106.89



\* \* 面積計算 (倍橫距法) \* \*

地 器械点	番 : G16 視準点	内角	方向角	距離	緯距	經距	X座標	Y座標	倍橫距	倍面積
G16-1	G16-2	134-39-24	166-42-34	10.009	-9.741	2.301	-110925.734	-4468.634	2.301	-22.414041
G16-2	G16-3	135-32-08	122-14-42	17.410	-9.289	14.725	-110935.023	-4453.909	19.327	-179.528503
G16-3	G16-4	134-55-48	77-10-30	10.006	2.221	9.756	-110932.802	-4444.153	43.808	97.297568
G16-4	K16-18	134-45-02	31-55-32	4.026	3.417	2.129	-110929.385	-4442.024	55.693	190.302981
K16-18	K16-16	180-00-03	31-55-35	6.686	5.675	3.536	-110923.710	-4438.488	61.358	348.206650
K16-16	G16-5	180-00-06	31-55-41	10.464	8.881	5.534	-110914.829	-4432.954	70.428	625.471068
G16-5	G16-6	180-07-18	32-02-59	9.475	8.031	5.028	-110906.798	-4427.926	80.990	650.430690
G16-6	G16-7	179-58-19	32-01-18	8.211	6.962	4.354	-110899.836	-4423.572	90.372	629.169864
G16-7	G16-8	179-57-07	31-58-25	4.787	4.061	2.535	-110895.775	-4421.037	97.261	394.976921
G16-8	G16-9	134-05-33	346-03-58	10.183	9.883	-2.452	-110885.892	-4423.489	97.344	962.050752
G16-9	G16-10	135-50-19	301-54-17	10.683	5.646	-9.069	-110880.246	-4432.558	85.823	484.556658
G16-10	G16-11	180-02-14	301-56-31	13.601	7.196	-11.542	-110873.050	-4444.100	65.212	469.265552
G16-11	G16-12	90-00-18	211-56-49	20.031	-16.997	-10.599	-110890.047	-4454.699	43.071	-732.077787
G16-12	G16-13	180-03-10	211-59-59	9.477	-8.037	-5.022	-110898.084	-4459.721	27.450	-220.615650
G16-13	K16-17	180-03-05	212-03-04	10.464	-8.869	-5.553	-110906.953	-4465.274	16.875	-149.664375
K16-17	K16-19	180-00-22	212-03-26	6.687	-5.667	-3.549	-110912.620	-4468.823	7.773	-44.049591
K16-19	G16-1	179-59-44	212-03-10	3.980	-3.373	-2.112	-110915.993	-4470.935	2.112	-7.123776
									倍面積	3496.254981
									面積	1748.1274905
									坪數	528.80

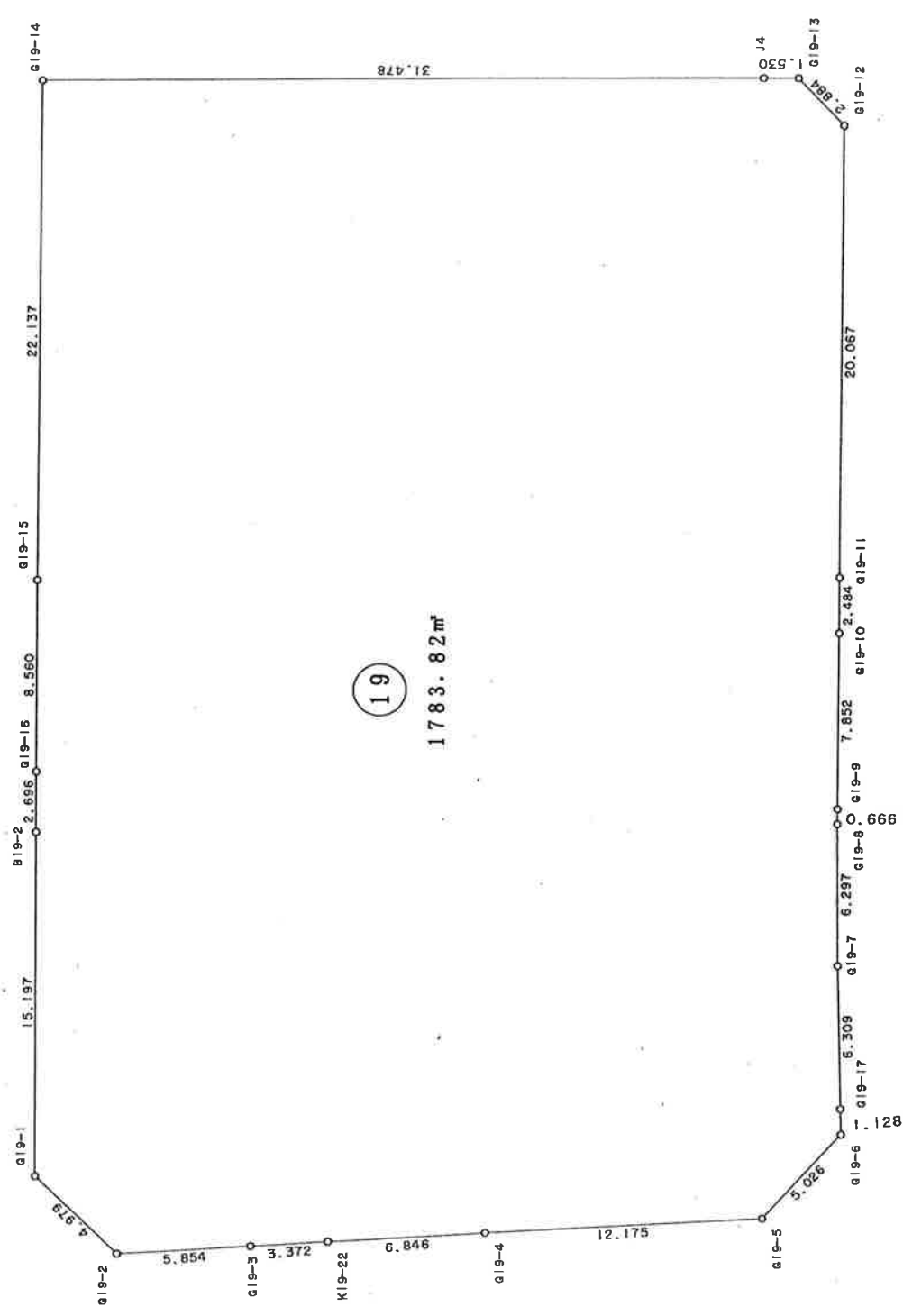
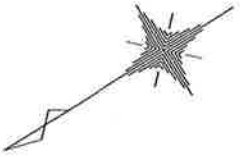


\* \* 面積計算 (倍橫距法) \* \*

地 器械点	番： 視準点	G17 内角	方向角	距離	緯距	經距	X座標	Y座標	倍橫距	倍面積
G17-1	K17-22	90-08-09	212-03-14	5.643	-4.783	-2.995	-110910.149	-4555.186	-2.995	14.325085
K17-22	K17-20	180-15-42	212-18-56	10.186	-8.608	-5.445	-110918.757	-4560.631	-11.435	98.432480
K17-20	K17-19	180-00-38	212-19-34	1.515	-1.280	-0.810	-110920.037	-4561.441	-17.690	22.643200
K17-19	K17-18	180-18-59	212-38-33	2.670	-2.248	-1.440	-110922.285	-4562.881	-19.940	44.825120
K17-18	K17-17	179-58-48	212-37-21	9.065	-7.635	-4.887	-110929.920	-4567.768	-26.267	200.548545
K17-17	K17-16	179-28-54	212-06-15	5.903	-5.000	-3.137	-110934.920	-4570.905	-34.291	171.455000
K17-16	B17-1	179-59-22	212-05-37	1.722	-1.459	-0.915	-110936.379	-4571.820	-38.343	55.942437
B17-1	K17-15	180-03-47	212-09-24	2.809	-2.378	-1.495	-110938.757	-4573.315	-40.753	96.910634
K17-15	K17-14	180-51-34	213-00-58	4.032	-3.381	-2.197	-110942.138	-4575.512	-44.445	150.268545
K17-14	K17-13	180-01-12	213-02-10	4.520	-3.789	-2.464	-110945.927	-4577.976	-49.106	186.062634
K17-13	K17-12	180-17-33	213-19-43	10.021	-8.373	-5.506	-110954.300	-4583.482	-57.076	477.897348
K17-12	K17-11	180-12-10	213-31-53	4.410	-3.676	-2.436	-110957.976	-4585.918	-65.018	239.006168
K17-11	K17-25	88-27-32	121-59-25	9.602	-5.087	8.144	-110963.063	-4577.774	-59.310	301.709970
K17-25	K17-10	180-03-26	122-02-51	7.199	-3.820	6.102	-110966.883	-4571.672	-45.064	172.144480
K17-10	KE17-2	179-57-38	122-00-29	82.979	-43.982	70.364	-111010.865	-4501.308	31.402	-1381.122764
KE17-2	X17-4	135-02-53	77-03-22	1.139	0.255	1.110	-111010.610	-4500.198	102.876	26.247108
X17-4	KE17-1	180-00-00	77-03-22	8.861	1.985	8.636	-111008.625	-4491.562	112.622	223.539772
KE17-1	B17-2	134-57-25	32-00-47	18.747	15.896	9.938	-110992.729	-4481.624	131.196	2085.491616
B17-2	B17-6	180-00-20	32-01-07	6.000	5.087	3.181	-110987.642	-4478.443	144.315	734.130405
B17-6	B17-8	179-59-43	32-00-50	5.456	4.626	2.892	-110983.016	-4475.551	150.388	695.734238
B17-8	G17-5	180-00-00	32-00-50	18.163	15.401	9.629	-110967.615	-4465.922	162.909	2508.926221
G17-5	G17-4	135-08-13	347-09-03	10.010	9.759	-2.226	-110957.856	-4468.148	170.312	1662.074808
G17-4	G17-3	134-48-27	301-57-30	24.523	12.980	-20.806	-110944.876	-4488.954	147.280	1911.694400
G17-3	G17-2	180-03-03	302-00-33	64.565	34.223	-54.749	-110910.653	-4543.703	71.725	2454.644675
G17-2	G17-1	179-54-32	301-55-05	10.000	5.287	-8.488	-110905.366	-4552.191	8.488	44.876056

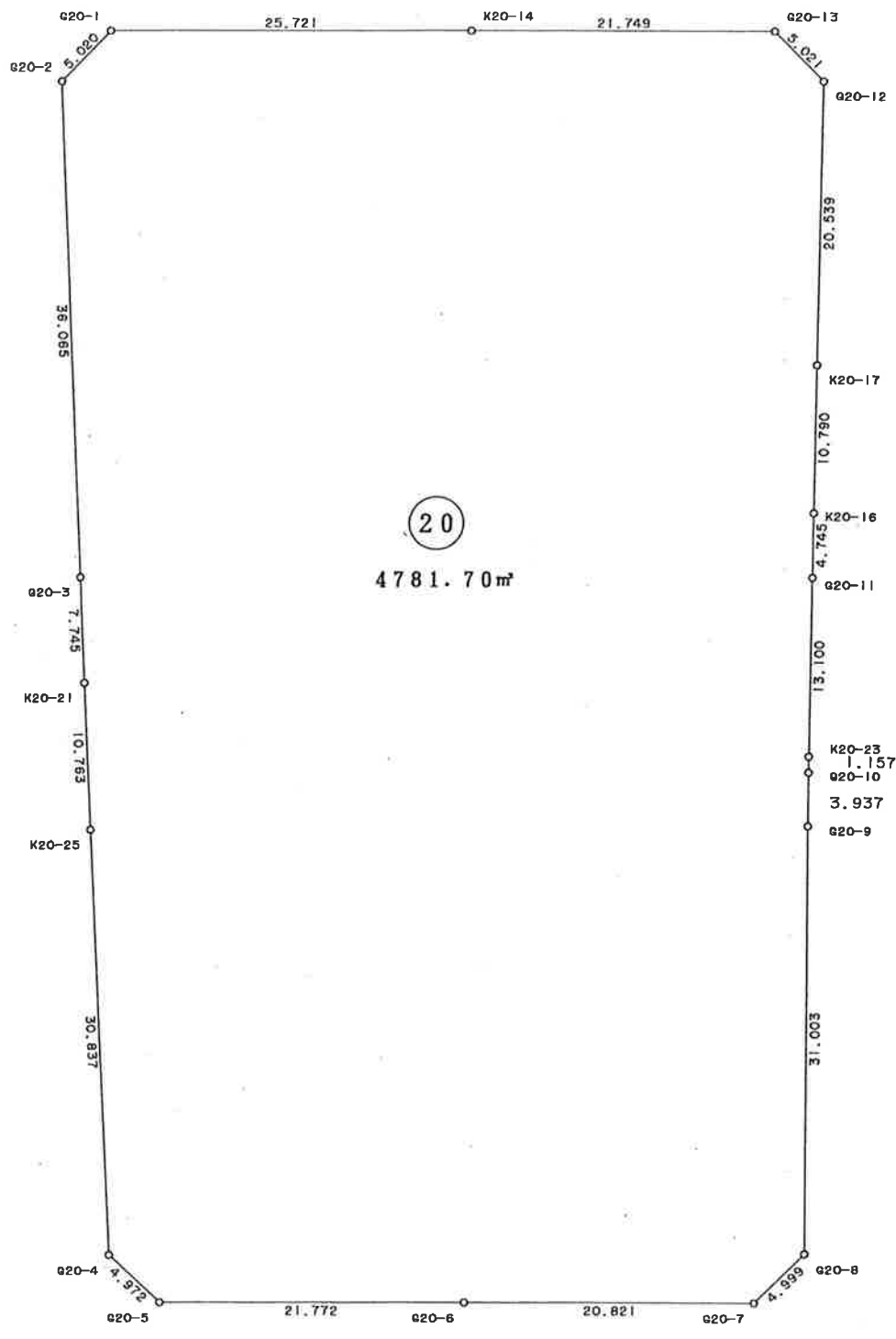
倍面積	13198.408181
面積	6599.2040905
坪数	1996.25





\* \* 面積計算 (倍横距法) \* \*

地 器械点	番 : G19 視準点	内角	方向角	距離	緯距	經距	X座標	Y座標	倍横距	倍面積
G19-1	G19-2	133-37-51	255-39-44	4.979	-1.233	-4.824	-110744.141	-4560.876	-4.824	5.947992
G19-2	G19-3	133-20-45	209-00-29	5.854	-5.120	-2.839	-110749.261	-4563.715	-12.487	63.933440
G19-3	K19-22	180-02-06	209-02-35	3.372	-2.948	-1.637	-110752.209	-4565.352	-16.963	50.006924
K19-22	G19-4	179-59-34	209-02-09	6.846	-5.986	-3.323	-110758.195	-4568.675	-21.923	131.231078
G19-4	G19-5	180-05-29	209-07-38	12.175	-10.635	-5.926	-110768.830	-4574.601	-31.172	331.514220
G19-5	G19-6	135-33-53	164-41-31	5.026	-4.848	1.327	-110773.678	-4573.274	-35.771	173.417808
G19-6	G19-17	135-56-27	120-37-58	1.128	-0.575	0.971	-110774.253	-4572.303	-33.473	19.246975
G19-17	G19-7	180-04-43	120-42-41	6.309	-3.222	5.424	-110777.475	-4566.879	-27.078	87.245316
G19-7	G19-8	180-59-32	121-42-13	6.297	-3.309	5.357	-110780.784	-4561.522	-16.297	53.926773
G19-8	G19-9	180-24-40	122-06-53	0.666	-0.354	0.564	-110781.138	-4560.958	-10.376	3.673104
G19-9	G19-10	180-04-32	122-11-25	7.852	-4.183	6.645	-110785.321	-4554.313	-3.167	13.247561
G19-10	G19-11	179-38-38	121-50-03	2.484	-1.310	2.110	-110786.631	-4552.203	5.588	-7.320280
G19-11	G19-12	180-08-20	121-58-23	20.067	-10.626	17.023	-110797.257	-4535.180	24.721	-262.685346
G19-12	G19-13	135-45-16	77-43-39	2.884	0.613	2.818	-110796.644	-4532.362	44.562	27.316506
G19-13	J4	134-19-18	32-02-57	1.530	1.297	0.812	-110795.347	-4531.550	48.192	62.505024
J4	G19-14	179-59-31	32-02-28	31.478	26.683	16.700	-110768.664	-4514.850	65.704	1753.179832
G19-14	G19-15	89-59-23	302-01-51	22.137	11.741	-18.767	-110756.923	-4533.617	63.637	747.162017
G19-15	G19-16	179-52-56	301-54-47	8.560	4.525	-7.266	-110752.398	-4540.883	37.604	170.158100
G19-16	B19-2	180-06-53	302-01-40	2.696	1.430	-2.286	-110750.968	-4543.169	28.052	40.114360
B19-2	G19-1	180-00-13	302-01-53	15.197	8.060	-12.883	-110742.908	-4556.052	12.883	103.836980
									倍面積	3567.658384
									面積	1783.8291920
									坪数	539.60



\* \* 面積計算 (倍横距法) \* \*

地 器械点	番 : G20 視準点	内角	方向角	距離	緯距	經距	X座標	Y座標	倍横距	倍面積
G20-1	G20-2	133-57-56	255-56-50	5.020	-1.219	-4.870	-110657.209	-4512.557	-4.870	5.936530
G20-2	G20-3	133-06-14	209-03-04	36.065	-31.528	-17.513	-110688.737	-4530.070	-27.253	859.232584
G20-3	K20-21	180-01-33	209-04-37	7.745	-6.769	-3.764	-110695.506	-4533.834	-48.530	328.499570
K20-21	K20-25	179-59-45	209-04-22	10.763	-9.407	-5.230	-110704.913	-4539.064	-57.524	541.128268
K20-25	G20-4	180-00-06	209-04-28	30.837	-26.951	-14.985	-110731.864	-4554.049	-77.739	2095.143789
G20-4	G20-5	136-23-21	165-27-49	4.972	-4.813	1.248	-110736.677	-4552.801	-91.476	440.273988
G20-5	G20-6	136-34-10	122-01-59	21.772	-11.548	18.457	-110748.225	-4534.344	-71.771	828.811508
G20-6	G20-7	179-58-29	122-00-28	20.821	-11.036	17.656	-110759.261	-4516.688	-35.658	393.521688
G20-7	G20-8	134-59-14	76-59-42	4.999	1.125	4.871	-110758.136	-4511.817	-13.131	-14.772375
G20-8	G20-9	135-00-08	31-59-50	31.003	26.293	16.428	-110731.843	-4495.389	8.168	214.761224
G20-9	G20-10	180-23-49	32-23-39	3.937	3.324	2.109	-110728.519	-4493.280	26.705	88.767420
G20-10	K20-23	179-57-47	32-21-26	1.157	0.977	0.619	-110727.542	-4492.661	29.433	28.756041
K20-23	G20-11	180-00-55	32-22-21	13.100	11.064	7.014	-110716.478	-4485.647	37.066	410.098224
G20-11	K20-16	180-03-05	32-25-26	4.745	4.005	2.544	-110712.473	-4483.103	46.624	186.729120
K20-16	K20-17	179-59-53	32-25-19	10.790	9.108	5.785	-110703.365	-4477.318	54.953	500.511924
K20-17	G20-12	180-00-11	32-25-30	20.539	17.337	11.013	-110686.028	-4466.305	71.751	1243.947087
G20-12	G20-13	134-43-14	347-08-44	5.021	4.895	-1.117	-110681.133	-4467.422	81.647	399.662065
G20-13	K20-14	134-50-15	301-58-59	21.749	11.520	-18.448	-110669.613	-4485.870	62.082	715.184640
K20-14	G20-1	179-59-55	301-58-54	25.721	13.623	-21.817	-110655.990	-4507.687	21.817	297.212991
									倍面積	9563.406286
									面積	4781.7031430
									坪数	1446.46