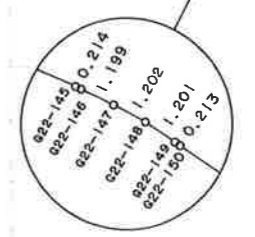
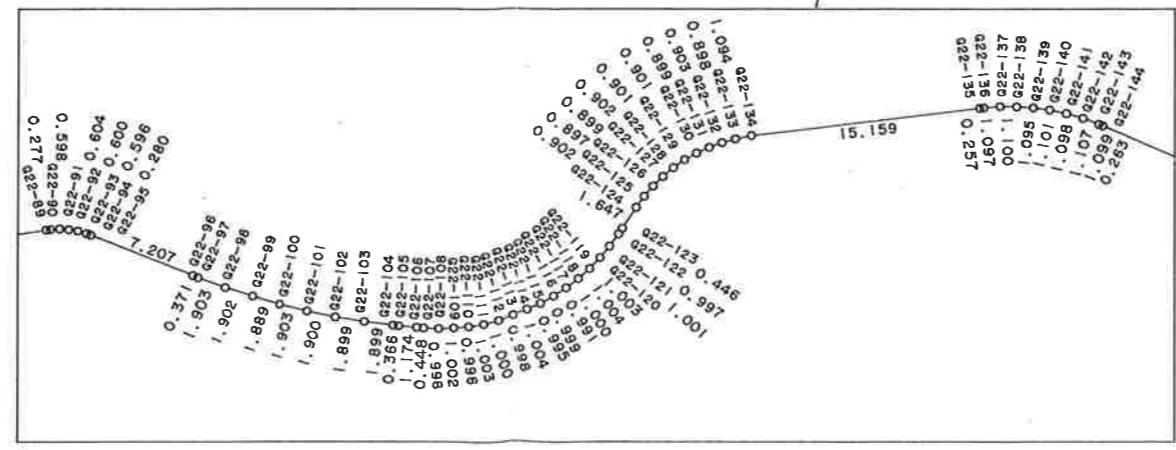
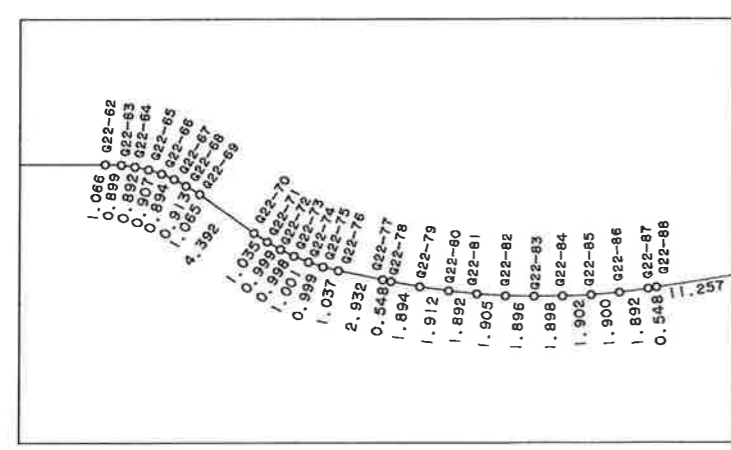
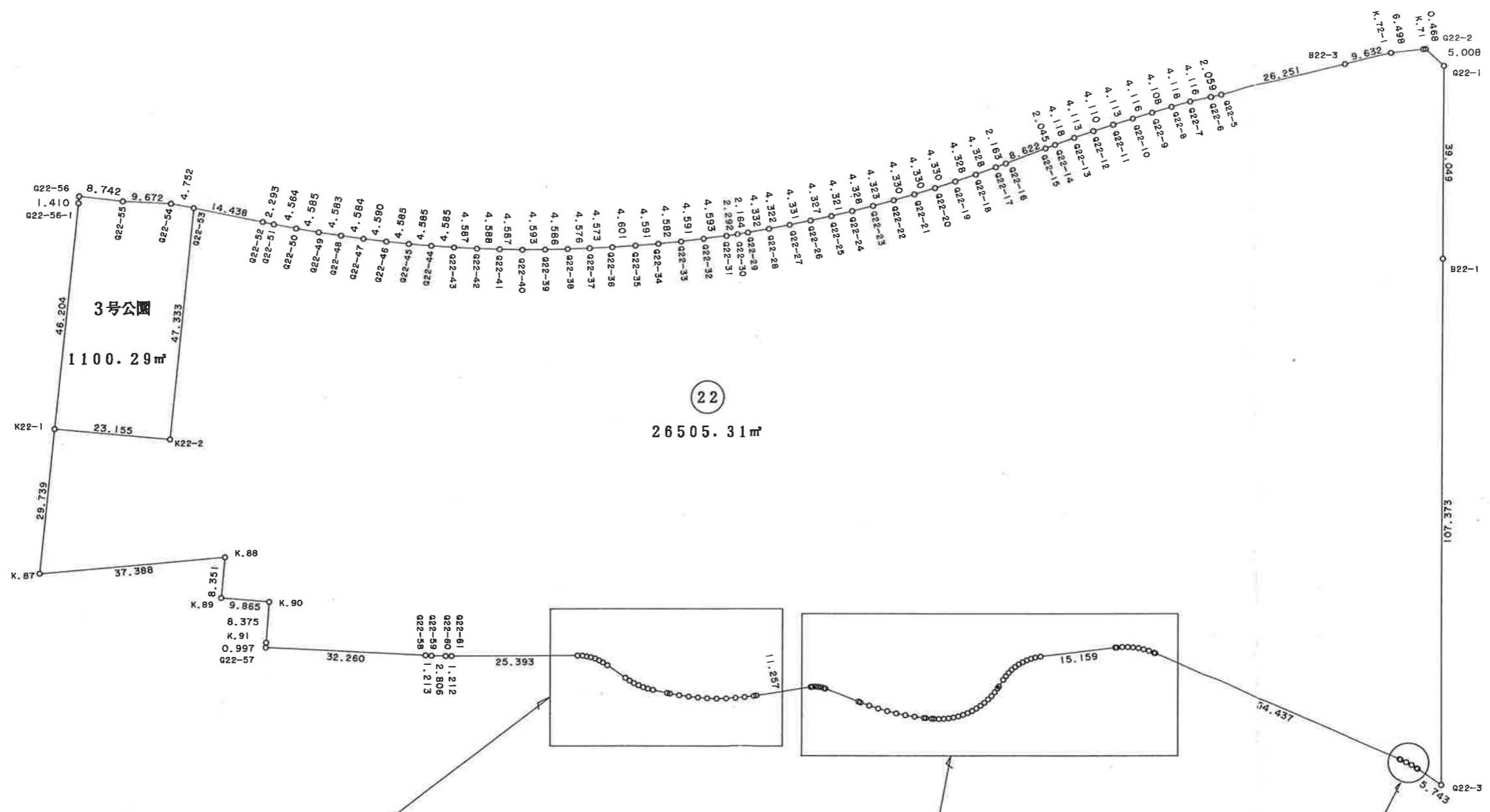


* * 面積計算 (倍橫距法) * *

地 器械点	番 : G21 視準点	内角	方向角	距離	緯距	經距	X座標	Y座標	倍橫距	倍面積
G21-1	G21-2	139-27-23	249-24-37	4.971	-1.748	-4.653	-110625.025	-4494.641	-4.653	8.133444
G21-2	G21-3	139-40-57	209-05-34	20.748	-18.130	-10.088	-110643.155	-4504.729	-19.394	351.613220
G21-3	G21-4	136-26-54	165-32-28	4.998	-4.840	1.248	-110647.995	-4503.481	-28.234	136.652560
G21-4	G21-5	136-28-28	122-00-56	25.797	-13.676	21.873	-110661.671	-4481.608	-5.113	69.925388
G21-5	K21-6	180-00-04	122-01-00	8.120	-4.305	6.885	-110665.976	-4474.723	23.645	-101.791725
K21-6	G21-7	180-01-10	122-02-10	14.386	-7.631	12.195	-110673.607	-4462.528	42.725	-326.034475
G21-7	G21-8	134-44-57	76-47-07	4.956	1.133	4.825	-110672.474	-4457.703	59.745	67.691085
G21-8	G21-9	135-35-44	32-22-51	8.813	7.443	4.720	-110665.031	-4452.983	69.290	515.725470
G21-9	G21-10	180-05-16	32-28-07	23.314	19.670	12.516	-110645.361	-4440.467	86.526	1701.966420
G21-10	G21-11	128-54-49	341-22-56	5.052	4.788	-1.613	-110640.573	-4442.080	97.429	466.490052
G21-11	J21-16	128-22-22	289-45-18	10.364	3.503	-9.754	-110637.070	-4451.834	86.062	301.475186
J21-16	G21-12	180-14-07	289-59-25	12.479	4.266	-11.727	-110632.804	-4463.561	64.581	275.502546
G21-12	J21-15	179-28-58	289-28-23	7.574	2.525	-7.141	-110630.279	-4470.702	45.713	115.425325
J21-15	G21-1	180-28-51	289-57-14	20.518	7.002	-19.286	-110623.277	-4489.988	19.286	135.040572
									倍面積	3717.815068
									面積	1858.9075340
									坪数	562.31



* * 面積計算 (倍横距法) * *

地 器械点	番 : G22 視準点	内角	方向角	距離	緯距	經距	X座標	Y座標	倍横距	倍面積
G22-1	G22-2	132-14-33	341-20-40	5.008	4.745	-1.602	-110616.292	-4507.713	-1.602	-7.601490
G22-2	K.71	132-05-44	293-26-24	0.468	0.186	-0.429	-110616.106	-4508.142	-3.633	-0.675738
K.71	K.72-1	179-19-15	292-45-39	6.498	2.514	-5.992	-110613.592	-4514.134	-10.054	-25.275756
K.72-1	B22-3	172-54-42	285-40-21	9.632	2.602	-9.274	-110610.990	-4523.408	-25.320	-65.882640
B22-3	G22-5	180-00-54	285-41-15	26.251	7.098	-25.273	-110603.892	-4548.681	-59.867	-424.935966
G22-5	G22-6	179-58-30	285-39-45	2.059	0.556	-1.983	-110603.336	-4550.664	-87.123	-48.440388
G22-6	G22-7	179-11-27	284-51-12	4.116	1.055	-3.978	-110602.281	-4554.642	-93.084	-98.203620
G22-7	G22-8	179-19-53	284-11-05	4.118	1.009	-3.992	-110601.272	-4558.634	-101.054	-101.963486
G22-8	G22-9	179-06-51	283-17-56	4.108	0.945	-3.998	-110600.327	-4562.632	-109.044	-103.046580
G22-9	G22-10	178-52-36	282-10-32	4.116	0.868	-4.023	-110599.459	-4566.655	-117.065	-101.612420
G22-10	G22-11	179-22-00	281-32-32	4.113	0.823	-4.030	-110598.636	-4570.685	-125.118	-102.972114
G22-11	G22-12	179-18-50	280-51-22	4.110	0.774	-4.036	-110597.862	-4574.721	-133.184	-103.084416
G22-12	G22-13	179-05-55	279-57-17	4.113	0.711	-4.051	-110597.151	-4578.772	-141.271	-100.443681
G22-13	G22-14	178-58-20	278-55-37	4.118	0.639	-4.068	-110596.512	-4582.840	-149.390	-95.460210
G22-14	G22-15	179-42-23	278-38-00	2.045	0.307	-2.022	-110596.205	-4584.862	-155.480	-47.732360
G22-15	G22-16	179-42-33	278-20-33	8.622	1.251	-8.531	-110594.954	-4593.393	-166.033	-207.707283
G22-16	G22-17	180-03-26	278-23-59	2.163	0.316	-2.140	-110594.638	-4595.533	-176.704	-55.838464
G22-17	G22-18	180-39-12	279-03-11	4.328	0.681	-4.274	-110593.957	-4599.807	-183.118	-124.703358
G22-18	G22-19	181-09-21	280-12-32	4.328	0.767	-4.259	-110593.190	-4604.066	-191.651	-146.996317
G22-19	G22-20	180-48-56	281-01-28	4.330	0.828	-4.250	-110592.362	-4608.316	-200.160	-165.732480
G22-20	G22-21	180-48-35	281-50-03	4.330	0.888	-4.238	-110591.474	-4612.554	-208.648	-185.279424
G22-21	G22-22	180-50-17	282-40-20	4.330	0.950	-4.225	-110590.524	-4616.779	-217.111	-206.255450
G22-22	G22-23	181-14-08	283-54-28	4.323	1.039	-4.196	-110589.485	-4620.975	-225.532	-234.327748
G22-23	G22-24	180-46-26	284-40-54	4.328	1.097	-4.187	-110588.388	-4625.162	-233.915	-256.604755
G22-24	G22-25	181-06-39	285-47-33	4.321	1.176	-4.158	-110587.212	-4629.320	-242.260	-284.897760
G22-25	G22-26	180-48-14	286-35-47	4.327	1.236	-4.147	-110585.976	-4633.467	-250.565	-309.698340
G22-26	G22-27	180-58-51	287-34-38	4.331	1.308	-4.129	-110584.668	-4637.596	-258.841	-338.564028

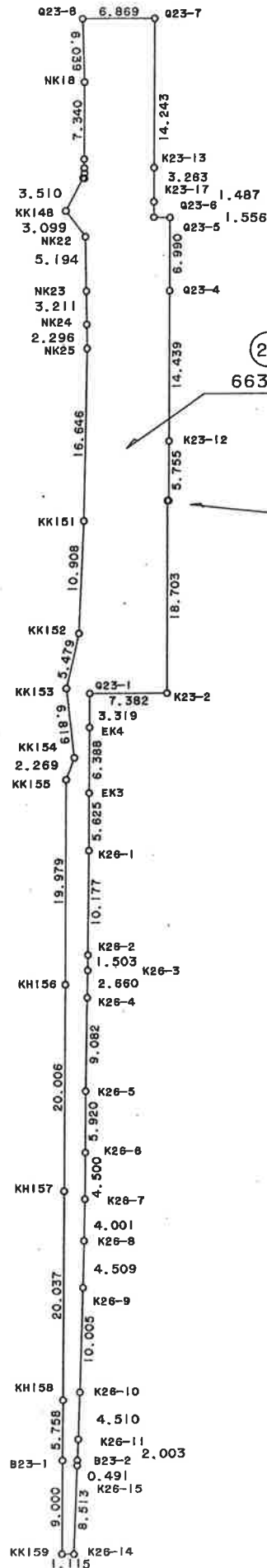
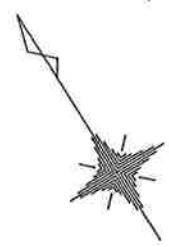
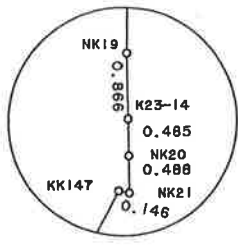
器械点	視準点	内角	方向角	距離	緯距	經距	X座標	Y座標	倍橫距	倍面積
G22-27	G22-28	180-49-57	288-24-35	4.322	1.365	-4.101	-110583.303	-4641.697	-267.071	-364.551915
G22-28	G22-29	181-06-16	289-30-51	4.332	1.447	-4.083	-110581.856	-4645.780	-275.255	-398.293985
G22-29	G22-30	180-47-16	290-18-07	2.164	0.751	-2.030	-110581.105	-4647.810	-281.368	-211.307368
G22-30	G22-31	180-17-00	290-35-07	2.292	0.806	-2.146	-110580.299	-4649.956	-285.544	-230.148464
G22-31	G22-32	180-35-18	291-10-25	4.593	1.659	-4.283	-110578.640	-4654.239	-291.973	-484.383207
G22-32	G22-33	181-14-06	292-24-31	4.591	1.750	-4.244	-110576.890	-4658.483	-300.500	-525.875000
G22-33	G22-34	180-57-21	293-21-52	4.582	1.817	-4.206	-110575.073	-4662.689	-308.950	-561.362150
G22-34	G22-35	180-52-41	294-14-33	4.591	1.885	-4.186	-110573.188	-4666.875	-317.342	-598.189670
G22-35	G22-36	180-59-49	295-14-22	4.601	1.962	-4.162	-110571.226	-4671.037	-325.690	-639.003780
G22-36	G22-37	181-02-44	296-17-06	4.573	2.025	-4.100	-110569.201	-4675.137	-333.952	-676.252800
G22-37	G22-38	180-54-26	297-11-32	4.576	2.091	-4.070	-110567.110	-4679.207	-342.122	-715.377102
G22-38	G22-39	180-50-13	298-01-45	4.586	2.155	-4.048	-110564.955	-4683.255	-350.240	-754.767200
G22-39	G22-40	181-01-49	299-03-34	4.593	2.231	-4.015	-110562.724	-4687.270	-358.303	-799.373993
G22-40	G22-41	181-11-43	300-15-17	4.587	2.311	-3.962	-110560.413	-4691.232	-366.280	-846.473080
G22-41	G22-42	180-48-58	301-04-15	4.588	2.368	-3.930	-110558.045	-4695.162	-374.172	-886.039296
G22-42	G22-43	181-02-21	302-06-36	4.587	2.438	-3.885	-110555.607	-4699.047	-381.987	-931.284306
G22-43	G22-44	181-04-52	303-11-28	4.585	2.510	-3.837	-110553.097	-4702.884	-389.709	-978.169590
G22-44	G22-45	180-54-04	304-05-32	4.585	2.570	-3.797	-110550.527	-4706.681	-397.343	-1021.171510
G22-45	G22-46	180-53-52	304-59-24	4.585	2.629	-3.756	-110547.898	-4710.437	-404.896	-1064.471584
G22-46	G22-47	181-00-49	306-00-13	4.590	2.698	-3.713	-110545.200	-4714.150	-412.365	-1112.560770
G22-47	G22-48	181-10-07	307-10-20	4.584	2.770	-3.653	-110542.430	-4717.803	-419.731	-1162.654870
G22-48	G22-49	180-35-43	307-46-03	4.583	2.807	-3.623	-110539.623	-4721.426	-427.007	-1198.608649
G22-49	G22-50	181-14-23	309-00-26	4.585	2.886	-3.563	-110536.737	-4724.989	-434.193	-1253.080998
G22-50	G22-51	180-58-48	309-59-14	4.564	2.933	-3.497	-110533.804	-4728.486	-441.253	-1294.195049
G22-51	G22-52	180-46-07	310-45-21	2.293	1.497	-1.737	-110532.307	-4730.223	-446.487	-668.391039
G22-52	G22-53	179-58-10	310-43-31	14.438	9.420	-10.942	-110522.887	-4741.165	-459.166	-4325.343720
G22-53	K22-2	83-52-00	214-35-31	47.333	-38.965	-26.872	-110561.852	-4768.037	-496.980	19364.825700
K22-2	K22-1	269-58-04	304-33-35	23.155	13.135	-19.069	-110548.717	-4787.106	-542.921	-7131.267335

器械点	視準点	内角	方向角	距離	緯距	經距	X座標	Y座標	倍橫距	倍面積
K22-1	K.87	89-59-36	214-33-11	29.739	-24.493	-16.867	-110573.210	-4803.973	-578.857	14177.944501
K.87	K.88	79-31-14	114-04-25	37.388	-15.251	34.136	-110588.461	-4769.837	-561.588	8564.778588
K.88	K.89	279-59-01	214-03-26	8.351	-6.919	-4.677	-110595.380	-4774.514	-532.129	3681.800551
K.89	K.90	89-51-01	123-54-27	9.865	-5.503	8.187	-110600.883	-4766.327	-528.619	2908.990357
K.90	K.91	269-09-16	213-03-43	8.375	-7.019	-4.569	-110607.902	-4770.896	-525.001	3684.982019
K.91	G22-57	180-04-13	213-07-56	0.997	-0.835	-0.545	-110608.737	-4771.441	-530.115	442.646025
G22-57	G22-58	88-50-54	121-58-50	32.260	-17.086	27.364	-110625.823	-4744.077	-503.296	8599.315456
G22-58	G22-59	179-34-28	121-33-18	1.213	-0.635	1.034	-110626.458	-4743.043	-474.898	301.560230
G22-59	G22-60	178-56-22	120-29-40	2.806	-1.424	2.418	-110627.882	-4740.625	-471.446	671.339104
G22-60	G22-61	179-00-36	119-30-16	1.212	-0.597	1.055	-110628.479	-4739.570	-467.973	279.379881
G22-61	G22-62	179-28-34	118-58-50	25.393	-12.303	22.213	-110640.782	-4717.357	-444.705	5471.205615
G22-62	G22-63	182-07-50	121-06-40	1.066	-0.551	0.913	-110641.333	-4716.444	-421.579	232.290029
G22-63	G22-64	186-17-39	127-24-19	0.899	-0.546	0.714	-110641.879	-4715.730	-419.952	229.293792
G22-64	G22-65	183-54-49	131-19-08	0.892	-0.589	0.670	-110642.468	-4715.060	-418.568	246.536552
G22-65	G22-66	185-03-55	136-23-03	0.907	-0.657	0.626	-110643.125	-4714.434	-417.272	274.147704
G22-66	G22-67	186-42-27	143-05-30	0.894	-0.715	0.537	-110643.840	-4713.897	-416.109	297.517935
G22-67	G22-68	185-15-20	148-20-50	0.913	-0.777	0.479	-110644.617	-4713.418	-415.093	322.527261
G22-68	G22-69	182-10-29	150-31-19	1.065	-0.927	0.524	-110645.544	-4712.894	-414.090	383.861430
G22-69	G22-70	184-26-09	154-57-28	4.392	-3.979	1.859	-110649.523	-4711.035	-411.707	1638.182153
G22-70	G22-71	177-44-05	152-41-33	1.035	-0.920	0.475	-110650.443	-4710.560	-409.373	376.623160
G22-71	G22-72	176-56-37	149-38-10	0.999	-0.862	0.505	-110651.305	-4710.055	-408.393	352.034766
G22-72	G22-73	175-28-48	145-06-58	0.998	-0.819	0.571	-110652.124	-4709.484	-407.317	333.592623
G22-73	G22-74	176-59-02	142-06-00	1.001	-0.790	0.615	-110652.914	-4708.869	-406.131	320.843490
G22-74	G22-75	175-05-24	137-11-24	0.999	-0.733	0.679	-110653.647	-4708.190	-404.837	296.745521
G22-75	G22-76	176-05-27	133-16-51	1.037	-0.711	0.755	-110654.358	-4707.435	-403.403	286.819533
G22-76	G22-77	177-59-09	131-16-00	2.932	-1.934	2.204	-110656.292	-4705.231	-400.444	774.458696
G22-77	G22-78	179-22-07	130-38-07	0.548	-0.357	0.416	-110656.649	-4704.815	-397.824	142.023168
G22-78	G22-79	179-06-58	129-45-05	1.894	-1.211	1.456	-110657.860	-4703.359	-395.952	479.497872

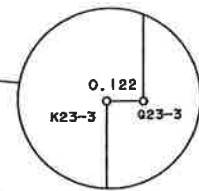
器械点	視準点	内角	方向角	距離	緯距	經距	X座標	Y座標	倍橫距	倍面積
G22-79	G22-80	177-40-55	127-26-00	1.912	-1.162	1.518	-110659.022	-4701.841	-392.978	456.640436
G22-80	G22-81	177-38-35	125-04-35	1.892	-1.087	1.548	-110660.109	-4700.293	-389.912	423.834344
G22-81	G22-82	177-37-15	122-41-50	1.905	-1.029	1.603	-110661.138	-4698.690	-386.761	397.977069
G22-82	G22-83	178-11-01	120-52-51	1.896	-0.973	1.627	-110662.111	-4697.063	-383.531	373.175663
G22-83	G22-84	177-37-42	118-30-33	1.898	-0.906	1.668	-110663.017	-4695.395	-380.236	344.493816
G22-84	G22-85	178-08-12	116-38-45	1.902	-0.853	1.700	-110663.870	-4693.695	-376.868	321.468404
G22-85	G22-86	177-21-23	114-00-08	1.900	-0.773	1.736	-110664.643	-4691.959	-373.432	288.662936
G22-86	G22-87	177-19-36	111-19-44	1.892	-0.688	1.762	-110665.331	-4690.197	-369.934	254.514592
G22-87	G22-88	178-51-35	110-11-19	0.548	-0.189	0.514	-110665.520	-4689.683	-367.658	69.487362
G22-88	G22-89	179-59-40	110-10-59	11.257	-3.884	10.566	-110669.404	-4679.117	-356.578	1384.948952
G22-89	G22-90	182-18-34	112-29-33	0.277	-0.106	0.256	-110669.510	-4678.861	-345.756	36.650136
G22-90	G22-91	183-05-11	115-34-44	0.598	-0.258	0.539	-110669.768	-4678.322	-344.961	88.999938
G22-91	G22-92	188-20-53	123-55-37	0.604	-0.337	0.501	-110670.105	-4677.821	-343.921	115.901377
G22-92	G22-93	183-37-48	127-33-25	0.600	-0.366	0.476	-110670.471	-4677.345	-342.944	125.517504
G22-93	G22-94	188-11-26	135-44-51	0.596	-0.427	0.416	-110670.898	-4676.929	-342.052	146.056204
G22-94	G22-95	184-45-41	140-30-32	0.280	-0.216	0.178	-110671.114	-4676.751	-341.458	73.754928
G22-95	G22-96	180-20-32	140-51-04	7.207	-5.589	4.550	-110676.703	-4672.201	-336.730	1881.983970
G22-96	G22-97	181-35-57	142-27-01	0.371	-0.294	0.226	-110676.997	-4671.975	-331.954	97.594476
G22-97	G22-98	177-00-14	139-27-15	1.903	-1.446	1.237	-110678.443	-4670.738	-330.491	477.889986
G22-98	G22-99	177-30-22	136-57-37	1.902	-1.390	1.298	-110679.833	-4669.440	-327.956	455.858840
G22-99	G22-100	178-12-41	135-10-18	1.889	-1.340	1.332	-110681.173	-4668.108	-325.326	435.936840
G22-100	G22-101	177-44-31	132-54-49	1.903	-1.296	1.394	-110682.469	-4666.714	-322.600	418.089600
G22-101	G22-102	178-10-54	131-05-43	1.900	-1.249	1.432	-110683.718	-4665.282	-319.774	399.397726
G22-102	G22-103	177-02-30	128-08-13	1.899	-1.173	1.494	-110684.891	-4663.788	-316.848	371.662704
G22-103	G22-104	178-08-52	126-17-05	1.899	-1.124	1.531	-110686.015	-4662.257	-313.823	352.737052
G22-104	G22-105	178-21-39	124-38-44	0.366	-0.208	0.301	-110686.223	-4661.956	-311.991	64.894128
G22-105	G22-106	180-05-12	124-43-56	1.174	-0.669	0.965	-110686.892	-4660.991	-310.725	207.875025
G22-106	G22-107	178-59-36	123-43-32	0.448	-0.249	0.373	-110687.141	-4660.618	-309.387	77.037363

器械点	視準点	内角	方向角	距離	緯距	經距	X座標	Y座標	倍橫距	倍面積
G22-107	G22-108	177-27-53	121-11-25	0.998	-0.517	0.854	-110687.658	-4659.764	-308.160	159.318720
G22-108	G22-109	175-37-50	116-49-15	1.002	-0.452	0.894	-110688.110	-4658.870	-306.412	138.498224
G22-109	G22-110	176-14-30	113-03-45	0.996	-0.390	0.916	-110688.500	-4657.954	-304.602	118.794780
G22-110	G22-111	176-05-43	109-09-28	1.003	-0.329	0.947	-110688.829	-4657.007	-302.739	99.601131
G22-111	G22-112	176-08-33	105-18-01	1.000	-0.264	0.965	-110689.093	-4656.042	-300.827	79.418328
G22-112	G22-113	176-05-19	101-23-20	0.998	-0.197	0.978	-110689.290	-4655.064	-298.884	58.880148
G22-113	G22-114	175-49-16	97-12-36	1.004	-0.126	0.996	-110689.416	-4654.068	-296.910	37.410660
G22-114	G22-115	176-18-19	93-30-55	0.995	-0.061	0.993	-110689.477	-4653.075	-294.921	17.990181
G22-115	G22-116	175-13-23	88-44-18	0.999	0.022	0.999	-110689.455	-4652.076	-292.929	-6.444438
G22-116	G22-117	176-55-14	85-39-32	0.991	0.075	0.988	-110689.380	-4651.088	-290.942	-21.820650
G22-117	G22-118	175-49-49	81-29-21	1.000	0.148	0.989	-110689.232	-4650.099	-288.965	-42.766820
G22-118	G22-119	176-26-24	77-55-45	1.004	0.210	0.982	-110689.022	-4649.117	-286.994	-60.268740
G22-119	G22-120	175-37-24	73-33-09	1.003	0.284	0.962	-110688.738	-4648.155	-285.050	-80.954200
G22-120	G22-121	175-37-25	69-10-34	1.001	0.356	0.936	-110688.382	-4647.219	-283.152	-100.802112
G22-121	G22-122	176-43-38	65-54-12	0.997	0.407	0.910	-110687.975	-4646.309	-281.306	-114.491542
G22-122	G22-123	176-26-23	62-20-35	0.446	0.207	0.395	-110687.768	-4645.914	-280.001	-57.960207
G22-123	G22-124	179-53-37	62-14-12	1.647	0.767	1.457	-110687.001	-4644.457	-278.149	-213.340283
G22-124	G22-125	182-13-15	64-27-27	0.902	0.389	0.814	-110686.612	-4643.643	-275.878	-107.316542
G22-125	G22-126	185-19-49	69-47-16	0.897	0.310	0.842	-110686.302	-4642.801	-274.222	-85.008820
G22-126	G22-127	183-47-38	73-34-54	0.899	0.254	0.862	-110686.048	-4641.939	-272.518	-69.219572
G22-127	G22-128	185-37-09	79-12-03	0.902	0.169	0.886	-110685.879	-4641.053	-270.770	-45.760130
G22-128	G22-129	184-25-26	83-37-29	0.901	0.100	0.895	-110685.779	-4640.158	-268.989	-26.898900
G22-129	G22-130	185-36-44	89-14-13	0.901	0.012	0.901	-110685.767	-4639.257	-267.193	-3.206316
G22-130	G22-131	185-21-26	94-35-39	0.899	-0.072	0.896	-110685.839	-4638.361	-265.396	19.108512
G22-131	G22-132	183-37-00	98-12-39	0.903	-0.129	0.894	-110685.968	-4637.467	-263.606	34.005174
G22-132	G22-133	185-26-19	103-38-58	0.898	-0.212	0.873	-110686.180	-4636.594	-261.839	55.509868
G22-133	G22-134	183-41-31	107-20-29	1.094	-0.326	1.044	-110686.506	-4635.550	-259.922	84.734572
G22-134	G22-135	184-56-17	112-16-46	15.159	-5.747	14.027	-110692.253	-4621.523	-244.851	1407.158697

器械点	視準点	内角	方向角	距離	緯距	經距	X座標	Y座標	倍橫距	倍面積
G22-135	G22-136	180-35-51	112-52-37	0.257	-0.100	0.237	-110692.353	-4621.286	-230.587	23.058700
G22-136	G22-137	181-37-55	114-30-32	1.097	-0.455	0.998	-110692.808	-4620.288	-229.352	104.355160
G22-137	G22-138	185-19-12	119-49-44	1.100	-0.547	0.954	-110693.355	-4619.334	-227.400	124.387800
G22-138	G22-139	183-19-28	123-09-12	1.095	-0.599	0.917	-110693.954	-4618.417	-225.529	135.091871
G22-139	G22-140	183-12-24	126-21-36	1.101	-0.653	0.887	-110694.607	-4617.530	-223.725	146.092425
G22-140	G22-141	185-10-10	131-31-46	1.098	-0.728	0.822	-110695.335	-4616.708	-222.016	161.627648
G22-141	G22-142	184-25-18	135-57-04	1.107	-0.796	0.770	-110696.131	-4615.938	-220.424	175.457504
G22-142	G22-143	184-28-37	140-25-41	1.099	-0.847	0.700	-110696.978	-4615.238	-218.954	185.454038
G22-143	G22-144	181-02-53	141-28-34	0.263	-0.206	0.164	-110697.184	-4615.074	-218.090	44.926540
G22-144	G22-145	181-03-40	142-32-14	54.437	-43.209	33.111	-110740.393	-4581.963	-184.815	7985.671335
G22-145	G22-146	182-44-02	145-16-16	0.214	-0.176	0.122	-110740.569	-4581.841	-151.582	26.678432
G22-146	G22-147	179-49-09	145-05-25	1.199	-0.983	0.686	-110741.552	-4581.155	-150.774	148.210842
G22-147	G22-148	181-26-40	146-32-05	1.202	-1.003	0.663	-110742.555	-4580.492	-149.425	149.873275
G22-148	G22-149	185-46-08	152-18-13	1.201	-1.063	0.558	-110743.618	-4579.934	-148.204	157.540852
G22-149	G22-150	182-41-45	154-59-58	0.213	-0.193	0.090	-110743.811	-4579.844	-147.556	28.478308
G22-150	G22-3	178-59-52	153-59-50	5.743	-5.162	2.518	-110748.973	-4577.326	-144.948	748.221576
G22-3	B22-1	55-06-19	29-06-09	107.373	93.817	52.223	-110655.156	-4525.103	-90.207	-8462.950119
B22-1	G22-1	179-59-58	29-06-07	39.049	34.119	18.992	-110621.037	-4506.111	-18.992	-647.988048
									倍面積	53010.628243
									面積	26505.3141215
									坪数	8017.85



23
663.17m²

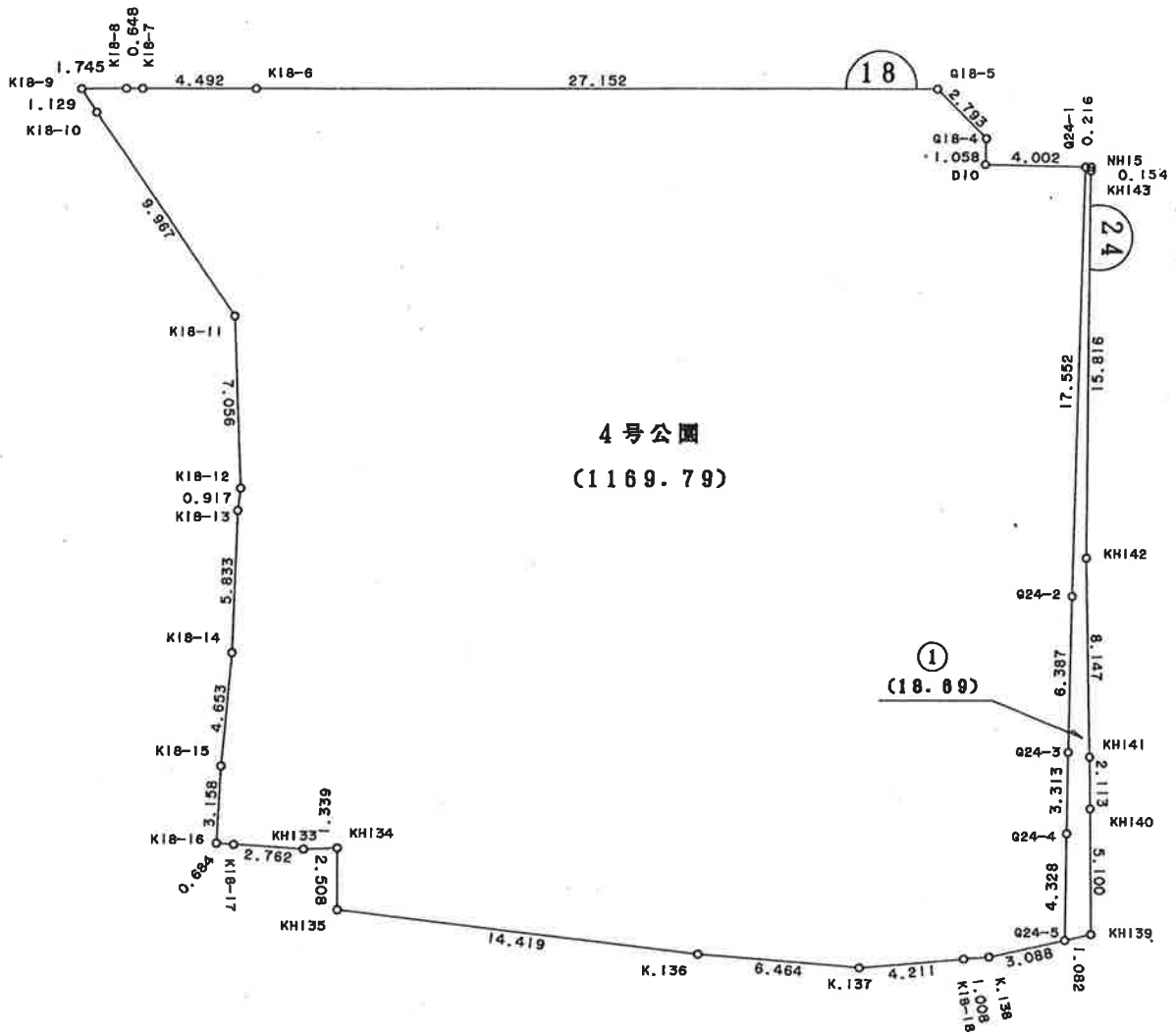
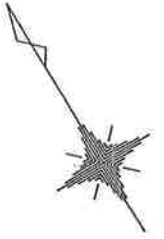


15
1

* * 面積計算 (倍横距法) * *

地 器械点	番 : G23 視準点	内角	方向角	距離	緯距	經距	X座標	Y座標	倍横距	倍面積
G23-8	NK18	88-17-38	210-06-52	6.039	-5.224	-3.030	-110844.742	-4519.849	-3.030	15.828720
NK18	NK19	182-01-00	212-07-52	7.340	-6.216	-3.904	-110850.958	-4523.753	-9.964	61.936224
NK19	K23-14	178-18-39	210-26-31	0.866	-0.747	-0.439	-110851.705	-4524.192	-14.307	10.687329
K23-14	NK20	180-02-08	210-28-39	0.485	-0.418	-0.246	-110852.123	-4524.438	-14.992	6.266656
NK20	NK21	180-20-43	210-49-22	0.488	-0.419	-0.250	-110852.542	-4524.688	-15.488	6.489472
NK21	KK147	282-14-26	313-03-48	0.146	0.100	-0.107	-110852.442	-4524.795	-15.845	-1.584500
KK147	KK148	106-02-45	239-06-33	3.510	-1.802	-3.012	-110854.244	-4527.807	-18.964	34.173128
KK148	NK22	116-04-41	175-11-14	3.099	-3.088	0.260	-110857.332	-4527.547	-21.716	67.059008
NK22	NK23	215-38-39	210-49-53	5.194	-4.460	-2.662	-110861.792	-4530.209	-24.118	107.566280
NK23	NK24	180-00-25	210-50-18	3.211	-2.757	-1.646	-110864.549	-4531.855	-28.426	78.370482
NK24	NK25	180-17-48	211-08-06	2.296	-1.965	-1.187	-110866.514	-4533.042	-31.259	61.423935
NK25	KK151	181-47-56	212-56-02	16.646	-13.971	-9.050	-110880.485	-4542.092	-41.496	579.740616
KK151	KK152	181-20-10	214-16-12	10.908	-9.014	-6.142	-110889.499	-4548.234	-56.688	510.985632
KK152	KK153	190-02-59	224-19-11	5.479	-3.920	-3.828	-110893.419	-4552.062	-66.658	261.299360
KK153	KK154	161-09-20	205-28-31	6.819	-6.156	-2.933	-110899.575	-4554.995	-73.419	451.967364
KK154	KK155	206-21-43	231-50-14	2.269	-1.402	-1.784	-110900.977	-4556.779	-78.136	109.546672
KK155	KH156	160-07-02	211-57-16	19.979	-16.952	-10.574	-110917.929	-4567.353	-90.494	1534.054288
KH156	KH157	180-03-02	212-00-18	20.006	-16.965	-10.603	-110934.894	-4577.956	-111.671	1894.498515
KH157	KH158	180-01-07	212-01-25	20.037	-16.988	-10.625	-110951.882	-4588.581	-132.899	2257.688212
KH158	B23-1	180-03-16	212-04-41	5.758	-4.879	-3.058	-110956.761	-4591.639	-146.582	715.173578
B23-1	KK159	180-00-37	212-05-18	9.000	-7.625	-4.781	-110964.386	-4596.420	-154.421	1177.460125
KK159	K26-14	89-54-22	121-59-40	1.115	-0.591	0.946	-110964.977	-4595.474	-158.256	93.529296
K26-14	K26-15	91-50-49	33-50-29	8.513	7.071	4.741	-110957.906	-4590.733	-152.569	-1078.815399
K26-15	B23-2	180-37-30	34-27-59	0.491	0.405	0.278	-110957.501	-4590.455	-147.550	-59.757750
B23-2	K26-11	180-03-25	34-31-24	2.003	1.650	1.135	-110955.851	-4589.320	-146.137	-241.126050
K26-11	K26-10	179-07-41	33-39-05	4.510	3.754	2.499	-110952.097	-4586.821	-142.503	-534.956262
K26-10	K26-9	179-40-30	33-19-35	10.005	8.360	5.497	-110943.737	-4581.324	-134.507	-1124.478520

器械点	視準点	内角	方向角	距離	緯距	經距	X座標	Y座標	倍橫距	倍面積
K26-9	K26-8	179-43-33	33-03-08	4.509	3.779	2.459	-110939.958	-4578.865	-126.551	-478.236229
K26-8	K26-7	179-57-02	33-00-10	4.001	3.355	2.179	-110936.603	-4576.686	-121.913	-409.018115
K26-7	K26-6	179-08-25	32-08-35	4.500	3.810	2.394	-110932.793	-4574.292	-117.340	-447.065400
K26-6	K26-5	179-57-28	32-06-03	5.920	5.015	3.146	-110927.778	-4571.146	-111.800	-560.677000
K26-5	K26-4	180-31-19	32-37-22	9.082	7.649	4.896	-110920.129	-4566.250	-103.758	-793.644942
K26-4	K26-3	180-00-13	32-37-35	2.660	2.240	1.434	-110917.889	-4564.816	-97.428	-218.238720
K26-3	K26-2	179-42-37	32-20-12	1.503	1.270	0.804	-110916.619	-4564.012	-95.190	-120.891300
K26-2	K26-1	179-59-02	32-19-14	10.177	8.600	5.441	-110908.019	-4558.571	-88.945	-764.927000
K26-1	EK3	179-43-10	32-02-24	5.625	4.768	2.984	-110903.251	-4555.587	-80.520	-383.919360
EK3	EK4	180-00-02	32-02-26	6.388	5.415	3.389	-110897.836	-4552.198	-74.147	-401.506005
EK4	G23-1	180-00-25	32-02-51	3.319	2.813	1.761	-110895.023	-4550.437	-68.997	-194.088561
G23-1	K23-2	269-56-00	121-58-51	7.382	-3.910	6.262	-110898.933	-4544.175	-60.974	238.408340
K23-2	K23-3	89-59-09	31-58-00	18.703	15.867	9.902	-110883.066	-4534.273	-44.810	-711.000270
K23-3	G23-3	270-17-17	122-15-17	0.122	-0.065	0.103	-110883.131	-4534.170	-34.805	2.262325
G23-3	K23-12	89-47-42	32-02-59	5.755	4.878	3.054	-110878.253	-4531.116	-31.648	-154.378944
K23-12	G23-4	180-00-13	32-03-12	14.439	12.238	7.663	-110866.015	-4523.453	-20.931	-256.153578
G23-4	G23-5	180-00-56	32-04-08	6.990	5.923	3.711	-110860.092	-4519.742	-9.557	-56.606111
G23-5	G23-6	90-50-04	302-54-12	1.556	0.845	-1.306	-110859.247	-4521.048	-7.152	-6.043440
G23-6	K23-17	269-05-53	32-00-05	1.487	1.261	0.788	-110857.986	-4520.260	-7.670	-9.671870
K23-17	K23-13	180-00-48	32-00-53	3.263	2.767	1.730	-110855.219	-4518.530	-5.152	-14.255584
K23-13	G23-7	179-59-09	32-00-02	14.243	12.079	7.548	-110843.140	-4510.982	4.126	49.837954
G23-7	G23-8	89-49-12	301-49-14	6.869	3.622	-5.837	-110839.518	-4516.819	5.837	21.141614
									倍面積	1326.354215
									面積	663.1771075
									坪数	200.61



* * 面積計算 (倍橫距法) * *

地 器械点	番 : 24-1 視準点	内角	方向角	距離	緯距	經距	X座標	Y座標	倍橫距	倍面積
G24-1	G24-2	91-20-18	213-15-33	17.552	-14.677	-9.626	-110831.931	-4548.879	-9.626	141.280802
G24-2	G24-3	179-50-37	213-06-10	6.387	-5.350	-3.488	-110837.281	-4552.367	-22.740	121.659000
G24-3	G24-4	179-47-10	212-53-20	3.313	-2.782	-1.799	-110840.063	-4554.166	-28.027	77.971114
G24-4	G24-5	179-47-29	212-40-49	4.328	-3.643	-2.337	-110843.706	-4556.503	-32.163	117.169809
G24-5	KH139	76-11-24	108-52-13	1.082	-0.350	1.024	-110844.056	-4555.479	-33.476	11.716600
KH139	KH140	102-28-23	31-20-36	5.100	4.356	2.653	-110839.700	-4552.826	-29.799	-129.804444
KH140	KH141	179-52-18	31-12-54	2.113	1.807	1.095	-110837.893	-4551.731	-26.051	-47.074157
KH141	KH142	179-31-15	30-44-09	8.147	7.003	4.164	-110830.890	-4547.567	-20.792	-145.606376
KH142	KH143	181-24-28	32-08-37	15.816	13.392	8.415	-110817.498	-4539.152	-8.213	-109.988496
KH143	NH15	180-05-56	32-14-33	0.154	0.130	0.082	-110817.368	-4539.070	0.284	0.036920
NH15	G24-1	89-40-42	301-55-15	0.216	0.114	-0.183	-110817.254	-4539.253	0.183	0.020862
									倍面積	37.381634
									面積	18.6908170
									坪数	5.65