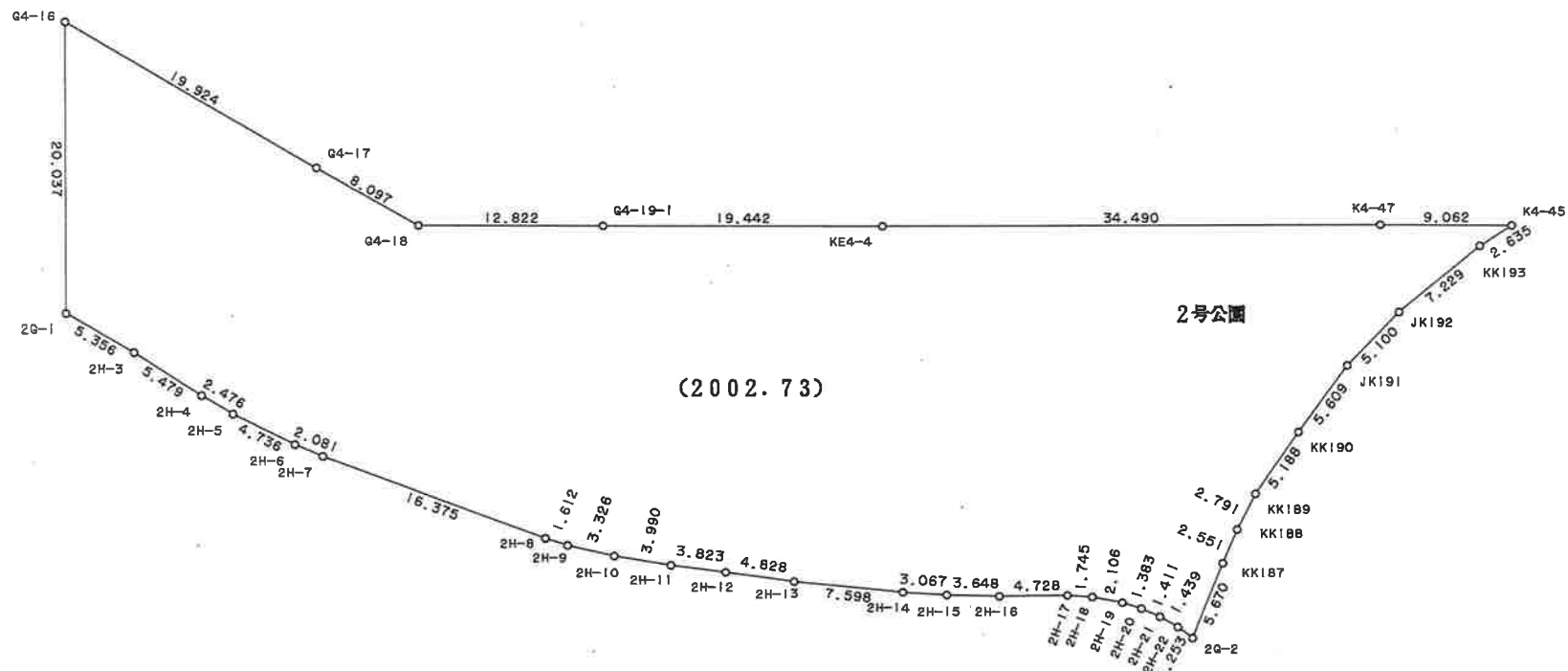
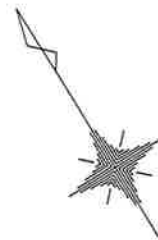


\* \* 面積計算 (倍橫距法) \* \*

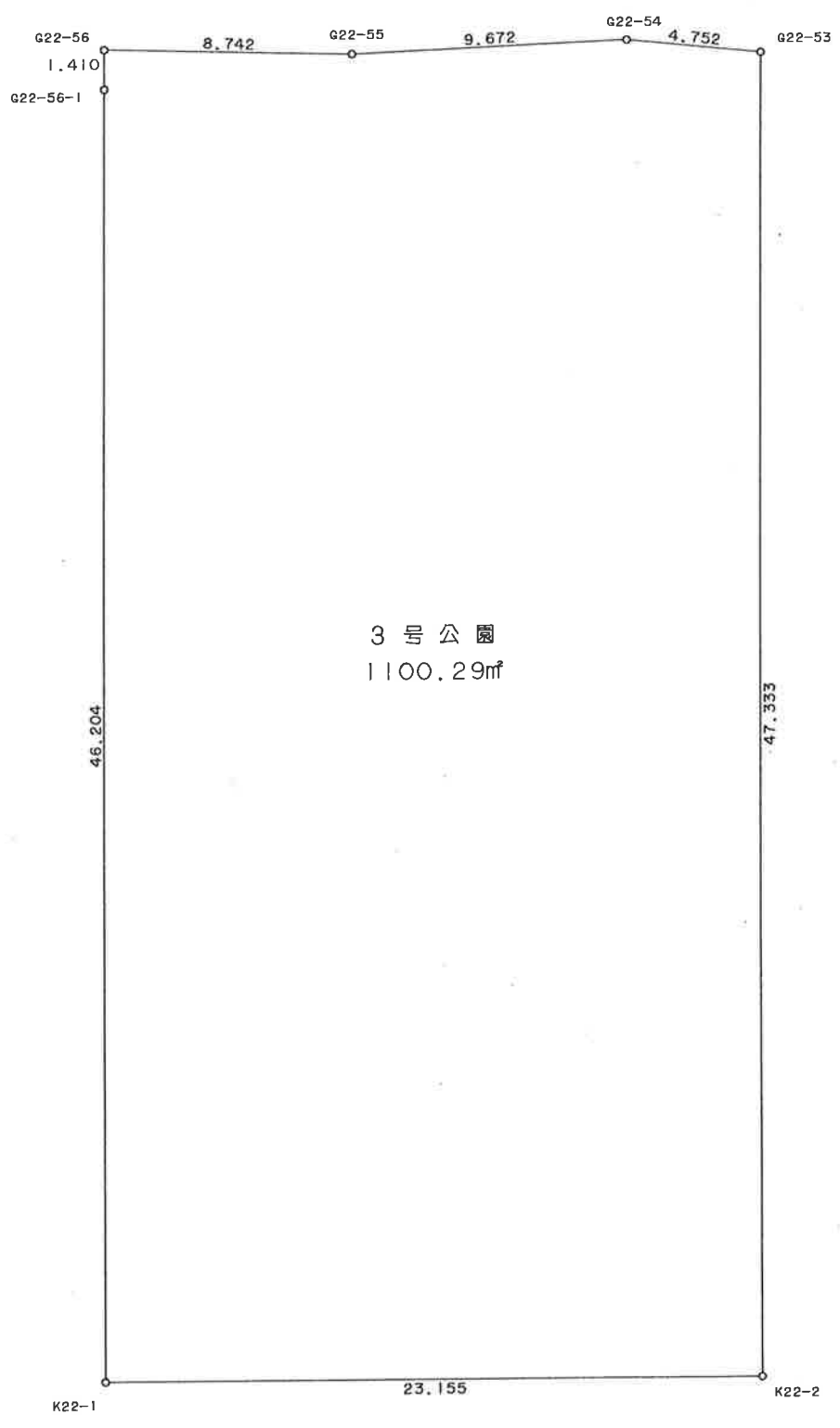
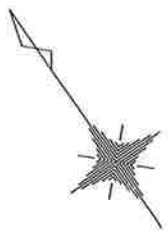
地 器械点	番： 視準点	1号公園 内角	方向角	距離	緯距	經距	X座標	Y座標	倍橫距	倍面積
K12-14	K.36	102-18-34	314-21-05	5.496	3.842	-3.930	-110678.802	-4389.871	-3.930	-15.099060
K.36	K.37	189-15-34	323-36-39	6.031	4.855	-3.578	-110673.947	-4393.449	-11.438	-55.531490
K.37	KH38	179-04-14	322-40-53	6.179	4.914	-3.746	-110669.033	-4397.195	-18.762	-92.196468
KH38	KH39	178-58-27	321-39-20	11.037	8.656	-6.847	-110660.377	-4404.042	-29.355	-254.096880
KH39	KK40	70-55-04	212-34-24	21.375	-18.013	-11.508	-110678.390	-4415.550	-47.710	859.400230
KK40	K12-9	178-54-43	211-29-07	9.573	-8.164	-5.000	-110686.554	-4420.550	-64.218	524.275752
K12-9	K12-10	90-30-36	121-59-43	11.281	-5.977	9.567	-110692.531	-4410.983	-59.651	356.534027
K12-10	K12-7	269-42-19	211-42-02	11.281	-9.598	-5.928	-110702.129	-4416.911	-56.012	537.603176
K12-7	K12-13	90-17-38	121-59-40	15.914	-8.432	13.497	-110710.561	-4403.414	-48.443	408.471376
K12-13	K12-14	90-02-51	32-02-31	32.934	27.917	17.473	-110682.644	-4385.941	-17.473	-487.793741
									倍面積	1781.566922
									面積	890.7834610
									坪数	269.46



\* \* 面積計算 (倍横距法) \* \*

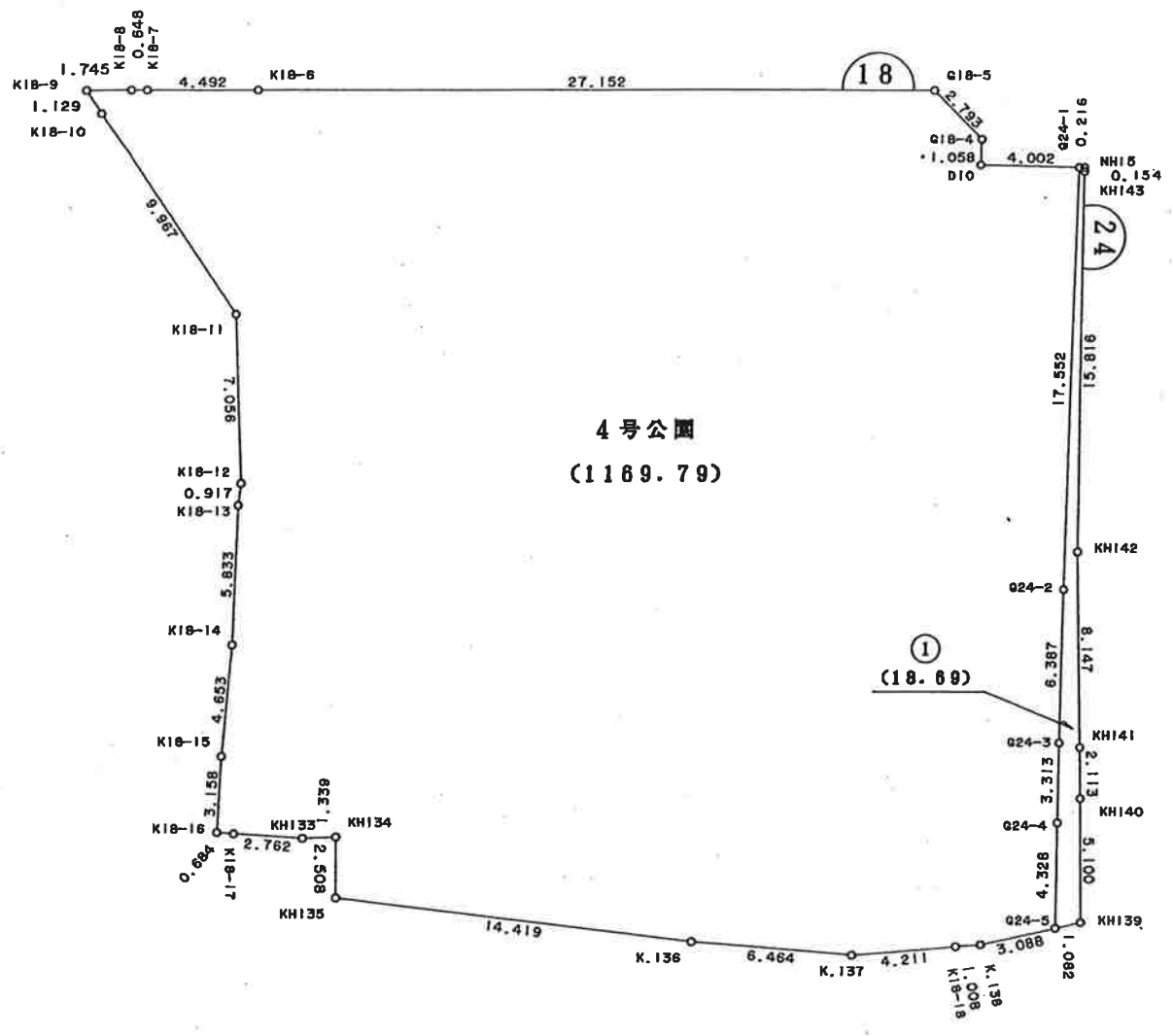
地 器械点	番 視準点	2号公園 内角	方向角	距離	緯距	經距	X座標	Y座標	倍横距	倍面積
G4-16	2G-1	60-17-07	212-02-02	20.037	-16.986	-10.628	-111145.817	-4532.671	-10.628	180.527208
2G-1	2H-3	119-40-08	151-42-10	5.356	-4.716	2.539	-111150.533	-4530.132	-18.717	88.269372
2H-3	2H-4	182-16-12	153-58-22	5.479	-4.923	2.404	-111155.456	-4527.728	-13.774	67.809402
2H-4	2H-5	177-40-18	151-38-40	2.476	-2.179	1.176	-111157.635	-4526.552	-10.194	22.212726
2H-5	2H-6	175-46-46	147-25-26	4.736	-3.991	2.550	-111161.626	-4524.002	-6.468	25.813788
2H-6	2H-7	177-25-10	144-50-36	2.081	-1.701	1.198	-111163.327	-4522.804	-2.720	4.626720
2H-7	2H-8	177-17-35	142-08-11	16.375	-12.928	10.051	-111176.255	-4512.753	8.529	-110.262912
2H-8	2H-9	177-29-37	139-37-48	1.612	-1.228	1.044	-111177.483	-4511.709	19.624	-24.098272
2H-9	2H-10	175-17-49	134-55-37	3.326	-2.349	2.355	-111179.832	-4509.354	23.023	-54.081027
2H-10	2H-11	176-20-00	131-15-37	3.990	-2.631	2.999	-111182.463	-4506.355	28.377	-74.659887
2H-11	2H-12	178-11-18	129-26-55	3.823	-2.429	2.952	-111184.892	-4503.403	34.328	-83.382712
2H-12	2H-13	180-26-04	129-52-59	4.828	-3.096	3.705	-111187.988	-4499.698	40.985	-126.889560
2H-13	2H-14	178-00-45	127-53-44	7.598	-4.667	5.996	-111192.655	-4493.702	50.686	-236.551562
2H-14	2H-15	177-36-11	125-29-55	3.067	-1.781	2.497	-111194.436	-4491.205	59.179	-105.397799
2H-15	2H-16	177-58-25	123-28-20	3.648	-2.012	3.043	-111196.448	-4488.162	64.719	-130.214628
2H-16	2H-17	177-53-41	121-22-01	4.728	-2.461	4.037	-111198.909	-4484.125	71.799	-176.697339
2H-17	2H-18	184-50-47	126-12-48	1.745	-1.031	1.408	-111199.940	-4482.717	77.244	-79.638564
2H-18	2H-19	186-40-11	132-52-59	2.106	-1.433	1.543	-111201.373	-4481.174	80.195	-114.919435
2H-19	2H-20	187-23-46	140-16-45	1.383	-1.064	0.884	-111202.437	-4480.290	82.622	-87.909808
2H-20	2H-21	185-34-49	145-51-34	1.411	-1.168	0.792	-111203.605	-4479.498	84.298	-98.460064
2H-21	2H-22	186-40-03	152-31-37	1.439	-1.277	0.664	-111204.882	-4478.834	85.754	-109.507858
2H-22	2G-2	186-11-22	158-42-59	1.253	-1.168	0.455	-111206.050	-4478.379	86.873	-101.467664
2G-2	KK187	75-20-43	54-03-42	5.670	3.328	4.591	-111202.722	-4473.788	91.919	305.906432
KK187	KK188	181-32-40	55-36-22	2.551	1.441	2.105	-111201.281	-4471.683	98.615	142.104215
KK188	KK189	183-44-24	59-20-46	2.791	1.423	2.401	-111199.858	-4469.282	103.121	146.741183
KK189	KK190	187-50-07	67-10-53	5.188	2.012	4.782	-111197.846	-4464.500	110.304	221.931648
KK190	JK191	182-14-06	69-24-59	5.609	1.972	5.251	-111195.874	-4459.249	120.337	237.304564

器械点	視準点	内角	方向角	距離	緯距	經距	X座標	Y座標	倍橫距	倍面積
JK191	JK192	187-04-43	76-29-42	5.100	1.191	4.959	-111194.683	-4454.290	130.547	155.481477
JK192	KK193	186-12-04	82-41-46	7.229	0.919	7.170	-111193.764	-4447.120	142.676	131.119244
KK193	K4-45	186-27-21	89-09-07	2.635	0.039	2.635	-111193.725	-4444.485	152.481	5.946759
K4-45	K4-47	33-12-19	302-21-26	9.062	4.850	-7.655	-111188.875	-4452.140	147.461	715.185850
K4-47	KE4-4	179-35-32	301-56-58	34.490	18.251	-29.265	-111170.624	-4481.405	110.541	2017.483791
KE4-4	G4-19-1	180-07-55	302-04-53	19.442	10.326	-16.473	-111160.298	-4497.878	64.803	669.155778
G4-19-1	G4-18	179-57-05	302-01-58	12.822	6.801	-10.870	-111153.497	-4508.748	37.460	254.765460
G4-18	G4-17	209-27-43	331-29-41	8.097	7.115	-3.864	-111146.382	-4512.612	22.726	161.695490
G4-17	G4-16	180-15-14	331-44-55	19.924	17.551	-9.431	-111128.831	-4522.043	9.431	165.523481
									倍面積	4005.465497
									面積	2002.7327485
									坪数	605.82



\* \* 面積計算 (倍横距法) \* \*

地 器械点	番 : 3号公園 視準点	内角	方向角	距離	緯距	經距	X座標	Y座標	倍横距	倍面積
G22-53	G22-54	95-44-52	310-20-23	4.752	3.076	-3.622	-110519.811	-4744.787	-3.622	-11.141272
G22-54	G22-55	171-41-27	302-01-50	9.672	5.130	-8.200	-110514.681	-4752.987	-15.444	-79.227720
G22-55	G22-56	184-01-50	306-03-40	8.742	5.146	-7.067	-110509.535	-4760.054	-30.711	-158.038806
G22-56	G22-56-1	88-07-30	214-11-10	1.410	-1.166	-0.792	-110510.701	-4760.846	-38.570	44.972620
G22-56-1	K22-1	180-26-57	214-38-07	46.204	-38.016	-26.260	-110548.717	-4787.106	-65.622	2494.685952
K22-1	K22-2	89-55-28	124-33-35	23.155	-13.135	19.069	-110561.852	-4768.037	-72.813	956.398755
K22-2	G22-53	90-01-56	34-35-31	47.333	38.965	26.872	-110522.887	-4741.165	-26.872	-1047.067480
									倍面積	2200.582049
									面積	1100.2910245
									坪数	332.83

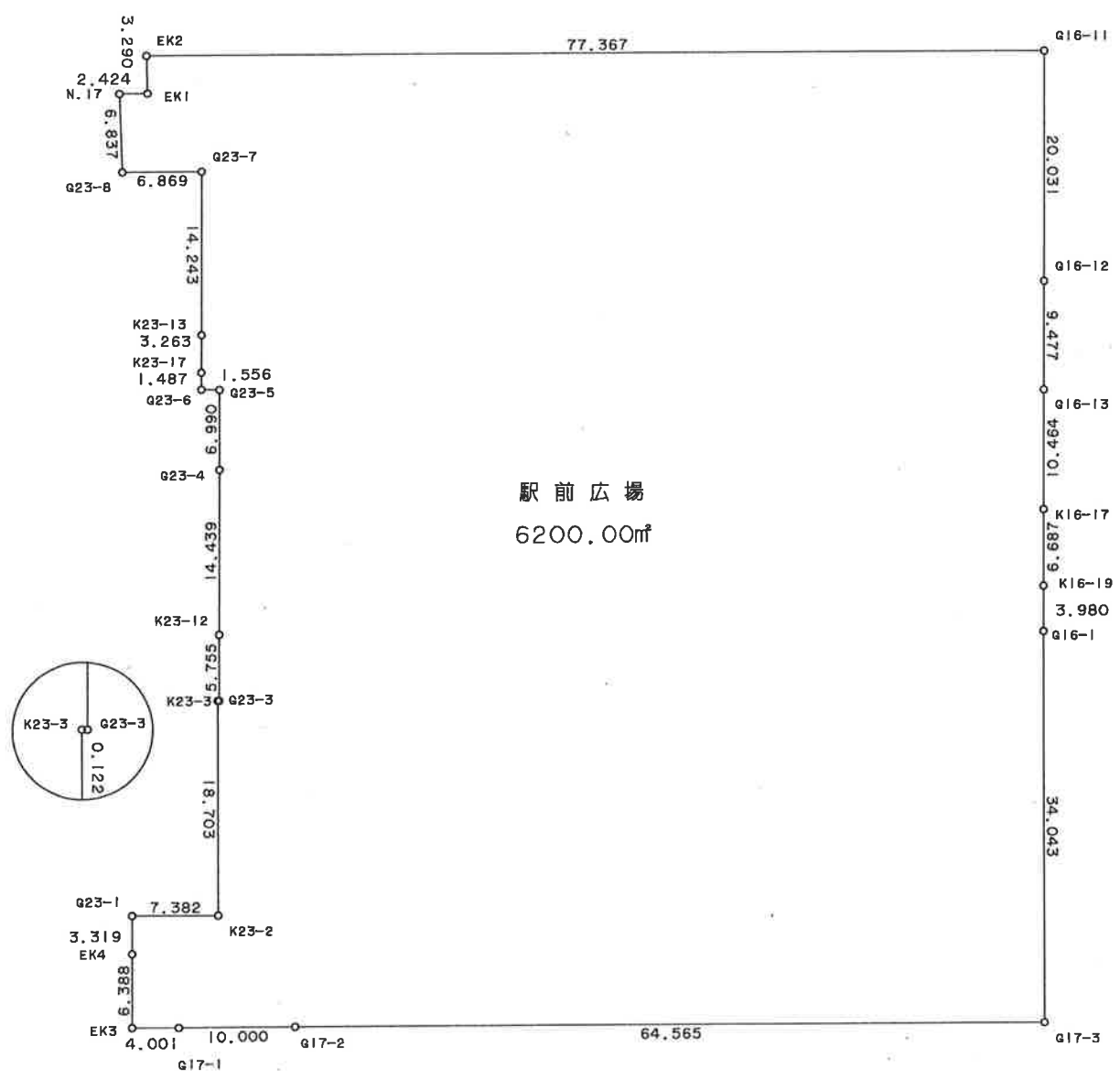
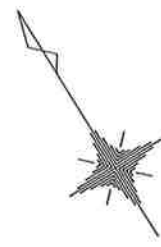




\* \* 面積計算 (倍横距法) \* \*

地 器械点	番： 視準点	4号公園 内角	方向角	距離	緯距	經距	X座標	Y座標	倍横距	倍面積
K18-9	K18-10	58-08-46	179-41-44	1.129	-1.129	0.006	-110794.557	-4571.479	0.006	-0.006774
K18-10	K18-11	178-30-59	178-12-43	9.967	-9.962	0.311	-110804.519	-4571.168	0.323	-3.217726
K18-11	K18-12	211-23-13	209-35-56	7.056	-6.135	-3.485	-110810.654	-4574.653	-2.851	17.490885
K18-12	K18-13	188-56-02	218-31-58	0.917	-0.717	-0.571	-110811.371	-4575.224	-6.907	4.952319
K18-13	K18-14	175-16-08	213-48-06	5.833	-4.847	-3.245	-110816.218	-4578.469	-10.723	51.974381
K18-14	K18-15	183-11-47	216-59-53	4.653	-3.716	-2.800	-110819.934	-4581.269	-16.768	62.309888
K18-15	K18-16	177-46-26	214-46-19	3.158	-2.594	-1.801	-110822.528	-4583.070	-21.369	55.431186
K18-16	K18-17	91-18-39	126-04-58	0.684	-0.403	0.553	-110822.931	-4582.517	-22.617	9.114651
K18-17	KH133	179-56-57	126-01-55	2.762	-1.625	2.234	-110824.556	-4580.283	-19.830	32.223750
KH133	KH134	173-35-46	119-37-41	1.339	-0.662	1.164	-110825.218	-4579.119	-16.432	10.877984
KH134	KH135	271-59-24	211-37-05	2.508	-2.136	-1.315	-110827.354	-4580.434	-16.583	35.421288
KH135	K.136	97-30-48	129-07-53	14.419	-9.100	11.185	-110836.454	-4569.249	-6.713	61.088300
K.136	K.137	177-38-53	126-46-46	6.464	-3.870	5.177	-110840.324	-4564.072	9.649	-37.341630
K.137	K18-18	170-05-01	116-51-47	4.211	-1.903	3.757	-110842.227	-4560.315	18.583	-35.363449
K18-18	K.138	180-24-49	117-16-36	1.008	-0.462	0.896	-110842.689	-4559.419	23.236	-10.735032
K.138	G24-5	171-57-01	109-13-37	3.088	-1.017	2.916	-110843.706	-4556.503	27.048	-27.507816
G24-5	G24-4	103-27-12	32-40-49	4.328	3.643	2.337	-110840.063	-4554.166	32.301	117.672543
G24-4	G24-3	180-12-31	32-53-20	3.313	2.782	1.799	-110837.281	-4552.367	36.437	101.367734
G24-3	G24-2	180-12-50	33-06-10	6.387	5.350	3.488	-110831.931	-4548.879	41.724	223.223400
G24-2	G24-1	180-09-23	33-15-33	17.552	14.677	9.626	-110817.254	-4539.253	54.838	804.857326
G24-1	D10	90-00-22	303-15-55	4.002	2.195	-3.346	-110815.059	-4542.599	61.118	134.154010
D10	G18-4	269-58-27	33-14-22	1.058	0.885	0.580	-110814.174	-4542.019	58.352	51.641520
G18-4	G18-5	134-36-20	347-50-42	2.793	2.730	-0.588	-110811.444	-4542.607	58.344	159.279120
G18-5	K18-6	134-08-05	301-58-47	27.152	14.380	-23.031	-110797.064	-4565.638	34.725	499.345500
K18-6	K18-7	180-00-44	301-59-31	4.492	2.380	-3.810	-110794.684	-4569.448	7.884	18.763920
K18-7	K18-8	179-57-26	301-56-57	0.648	0.343	-0.550	-110794.341	-4569.998	3.524	1.208732
K18-8	K18-9	179-36-01	301-32-58	1.745	0.913	-1.487	-110793.428	-4571.485	1.487	1.357631

倍面積	2339.583641
面積	1169.7918205
坪数	353.86



\* \* 面積計算 (倍横距法) \* \*

地 器械点	番： 視準点	駅前広場 内角	方向角	距離	緯距	經距	X座標	Y座標	倍横距	倍面積
EK2	EK1	88-16-54	210-18-24	3.290	-2.840	-1.660	-110834.863	-4511.353	-1.660	4.714400
EK1	N.17	271-24-11	301-42-35	2.424	1.274	-2.062	-110833.589	-4513.415	-5.382	-6.856668
N.17	G23-8	88-09-06	209-51-41	6.837	-5.929	-3.404	-110839.518	-4516.819	-10.848	64.317792
G23-8	G23-7	91-57-33	121-49-14	6.869	-3.622	5.837	-110843.140	-4510.982	-8.415	30.479130
G23-7	K23-13	270-10-48	212-00-02	14.243	-12.079	-7.548	-110855.219	-4518.530	-10.126	122.311954
K23-13	K23-17	180-00-51	212-00-53	3.263	-2.767	-1.730	-110857.986	-4520.260	-19.404	53.690868
K23-17	G23-6	179-59-12	212-00-05	1.487	-1.261	-0.788	-110859.247	-4521.048	-21.922	27.643642
G23-6	G23-5	90-54-07	122-54-12	1.556	-0.845	1.306	-110860.092	-4519.742	-21.404	18.086380
G23-5	G23-4	269-09-56	212-04-08	6.990	-5.923	-3.711	-110866.015	-4523.453	-23.809	141.020707
G23-4	K23-12	179-59-04	212-03-12	14.439	-12.238	-7.663	-110878.253	-4531.116	-35.183	430.569554
K23-12	G23-3	179-59-47	212-02-59	5.755	-4.878	-3.054	-110883.131	-4534.170	-45.900	223.900200
G23-3	K23-3	270-12-18	302-15-17	0.122	0.065	-0.103	-110883.066	-4534.273	-49.057	-3.188705
K23-3	K23-2	89-42-43	211-58-00	18.703	-15.867	-9.902	-110898.933	-4544.175	-59.062	937.136754
K23-2	G23-1	270-00-51	301-58-51	7.382	3.910	-6.262	-110895.023	-4550.437	-75.226	-294.133660
G23-1	EK4	90-04-00	212-02-51	3.319	-2.813	-1.761	-110897.836	-4552.198	-83.249	234.179437
EK4	EK3	179-59-35	212-02-26	6.388	-5.415	-3.389	-110903.251	-4555.587	-88.399	478.680585
EK3	G17-1	89-52-25	121-54-51	4.001	-2.115	3.396	-110905.366	-4552.191	-88.392	186.949080
G17-1	G17-2	180-00-14	121-55-05	10.000	-5.287	8.488	-110910.653	-4543.703	-76.508	404.497796
G17-2	G17-3	180-05-28	122-00-33	64.565	-34.223	54.749	-110944.876	-4488.954	-13.271	454.173433
G17-3	G16-1	89-56-57	31-57-30	34.043	28.883	18.019	-110915.993	-4470.935	59.497	1718.451851
G16-1	K16-19	180-05-40	32-03-10	3.980	3.373	2.112	-110912.620	-4468.823	79.628	268.585244
K16-19	K16-17	180-00-16	32-03-26	6.687	5.667	3.549	-110906.953	-4465.274	85.289	483.332763
K16-17	G16-13	179-59-38	32-03-04	10.464	8.869	5.553	-110898.084	-4459.721	94.391	837.153779
G16-13	G16-12	179-56-55	31-59-59	9.477	8.037	5.022	-110890.047	-4454.699	104.966	843.611742
G16-12	G16-11	179-56-50	31-56-49	20.031	16.997	10.599	-110873.050	-4444.100	120.587	2049.617239
G16-11	EK2	90-04-41	302-01-30	77.367	41.027	-65.593	-110832.023	-4509.693	65.593	2691.084011

倍面積	12400.009308
面積	6200.0046540
坪数	1875.50