

* * 面積計算 (倍橫距法) * *

地 器械点	番 : 19-1-1 視準点	内角	方向角	距離	緯距	經距	X座標	Y座標	倍橫距	倍面積
B19-2	G19-1	89-59-59	302-01-53	15.197	8.060	-12.883	-110742.908	-4556.052	-12.883	-103.836980
G19-1	G19-2	133-37-51	255-39-44	4.979	-1.233	-4.824	-110744.141	-4560.876	-30.590	37.717470
G19-2	G19-3	133-20-45	209-00-29	5.854	-5.120	-2.839	-110749.261	-4563.715	-38.253	195.855360
G19-3	J19-18	92-36-45	121-37-14	9.800	-5.138	8.345	-110754.399	-4555.370	-32.747	168.254086
J19-18	K19-23	267-26-14	209-03-28	3.372	-2.948	-1.638	-110757.347	-4557.008	-26.040	76.765920
K19-23	B19-1	92-34-07	121-37-35	8.349	-4.378	7.109	-110761.725	-4549.899	-20.569	90.051082
B19-1	B19-2	90-24-19	32-01-54	12.689	10.757	6.730	-110750.968	-4543.169	-6.730	-72.394610
									倍面積	392.412328
									面積	196.2061640
									坪数	59.35

* * 面積計算 (倍横距法) * *

地 器械点	番 : 19-1-2 視準点	内角	方向角	距離	緯距	經距	X座標	Y座標	倍横距	倍面積
G19-3	K19-22	87-25-21	209-02-35	3.372	-2.948	-1.637	-110752.209	-4565.352	-1.637	4.825876
K19-22	K19-23	92-34-50	121-37-25	9.799	-5.138	8.344	-110757.347	-4557.008	5.070	-26.049660
K19-23	J19-18	87-26-03	29-03-28	3.372	2.948	1.638	-110754.399	-4555.370	15.052	44.373296
J19-18	G19-3	92-33-46	301-37-14	9.800	5.138	-8.345	-110749.261	-4563.715	8.345	42.876610
									倍面積	66.026122
									面積	33.0130610
									坪数	9.98

* * 面積計算 (倍橫距法) * *

地 器械点	番 : 19-1-3 視準点	内角	方向角	距離	緯距	經距	X座標	Y座標	倍橫距	倍面積
B19-1	K19-24	89-35-03	121-36-57	2.697	-1.414	2.297	-110763.139	-4547.602	2.297	-3.247958
K19-24	G19-16	90-24-43	32-01-40	12.669	10.741	6.719	-110752.398	-4540.883	11.313	121.512933
G19-16	B19-2	90-00-00	302-01-40	2.696	1.430	-2.286	-110750.968	-4543.169	15.746	22.516780
B19-2	B19-1	90-00-14	212-01-54	12.689	-10.757	-6.730	-110761.725	-4549.899	6.730	-72.394610
									倍面積	68.387145
									面積	34.1935725
									坪数	10.34

* * 面積計算 (倍橫距法) * *

地 器械点	番 : 19-2-1 視準点	内角	方向角	距離	緯距	經距	X座標	Y座標	倍橫距	倍面積
K19-23	J19-19	87-25-01	209-02-36	6.847	-5.986	-3.324	-110763.333	-4560.332	-3.324	19.897464
J19-19	G19-20	92-26-56	121-29-32	10.689	-5.584	9.115	-110768.917	-4551.217	2.467	-13.775728
G19-20	K19-24	90-32-24	32-01-56	6.816	5.778	3.615	-110763.139	-4547.602	15.197	87.808266
K19-24	B19-1	89-35-01	301-36-57	2.697	1.414	-2.297	-110761.725	-4549.899	16.515	23.352210
B19-1	K19-23	180-00-38	301-37-35	8.349	4.378	-7.109	-110757.347	-4557.008	7.109	31.123202
									倍面積	148.405414
									面積	74.2027070
									坪数	22.44

* * 面積計算 (倍横距法) * *

地番 : 19-2-2	器械点	視準点	内角	方向角	距離	緯距	經距	X座標	Y座標	倍横距	倍面積
K19-22	G19-4		87-24-44	209-02-09	6.846	-5.986	-3.323	-110758.195	-4568.675	-3.323	19.891478
G19-4	J19-19		92-35-27	121-37-36	9.798	-5.138	8.343	-110763.333	-4560.332	1.697	-8.719186
J19-19	K19-23		87-25-00	29-02-36	6.847	5.986	3.324	-110757.347	-4557.008	13.364	79.996904
K19-23	K19-22		92-34-49	301-37-25	9.799	5.138	-8.344	-110752.209	-4565.352	8.344	42.871472
										倍面積	134.040668
										面積	67.0203340
										坪数	20.27

* * 面積計算 (倍橫距法) * *

地番 : 19-3 器械点 視準点	内角	方向角	距離	緯距	經距	X座標	Y座標	倍橫距	倍面積
G19-16 K19-24	90-06-53	212-01-40	12.669	-10.741	-6.719	-110763.139	-4547.602	-6.719	72.168779
K19-24 G19-20	180-00-16	212-01-56	6.816	-5.778	-3.615	-110768.917	-4551.217	-17.053	98.532234
G19-20 K19-25	89-30-18	121-32-14	6.099	-3.190	5.198	-110772.107	-4546.019	-15.470	49.349300
K19-25 G19-21	179-59-30	121-31-44	2.486	-1.300	2.119	-110773.407	-4543.900	-8.153	10.598900
G19-21 G19-15	90-25-40	31-57-24	19.428	16.484	10.283	-110756.923	-4533.617	4.249	70.040516
G19-15 G19-16	89-57-23	301-54-47	8.560	4.525	-7.266	-110752.398	-4540.883	7.266	32.878650
								倍面積	333.568379
								面積	166.7841895
								坪數	50.45

* * 面積計算 (倍橫距法) * *

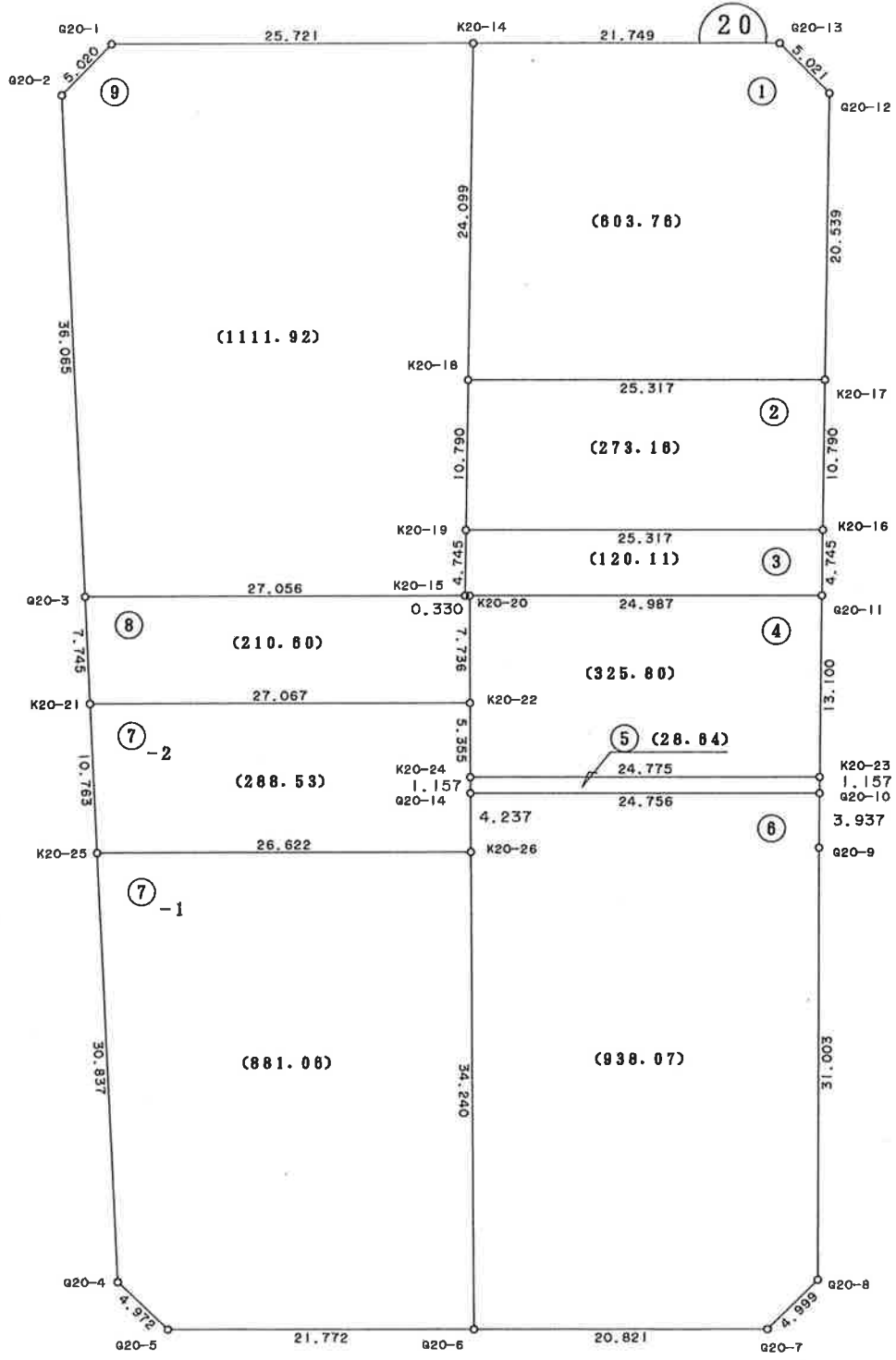
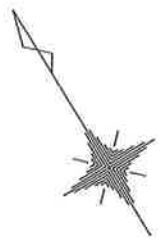
地 器械点	番 : 19-4 視準点	内角	方向角	距離	緯距	經距	X座標	Y座標	倍橫距	倍面積
G19-15	G19-21	89-55-33	211-57-24	19.428	-16.484	-10.283	-110773.407	-4543.900	-10.283	169.504972
G19-21	G19-11	180-10-01	212-07-25	15.615	-13.224	-8.303	-110786.631	-4552.203	-28.869	381.763656
G19-11	G19-12	89-50-58	121-58-23	20.067	-10.626	17.023	-110797.257	-4535.180	-20.149	214.103274
G19-12	G19-13	135-45-16	77-43-39	2.884	0.613	2.818	-110796.644	-4532.362	-0.308	-0.188804
G19-13	J4	134-19-18	32-02-57	1.530	1.297	0.812	-110795.347	-4531.550	3.322	4.308634
J4	G19-14	179-59-31	32-02-28	31.478	26.683	16.700	-110768.664	-4514.850	20.834	555.913622
G19-14	G19-15	89-59-23	302-01-51	22.137	11.741	-18.767	-110756.923	-4533.617	18.767	220.343347
									倍面積	1545.748701
									面積	772.8743505
									坪数	233.79

* * 面積計算 (倍橫距法) * *

地 器械点	番 : 19-5 視準点	内角	方向角	距離	緯距	經距	X座標	Y座標	倍橫距	倍面積
K19-25	G19-10	90-35-11	212-06-55	15.601	-13.214	-8.294	-110785.321	-4554.313	-8.294	109.596916
G19-10	G19-11	89-43-08	121-50-03	2.484	-1.310	2.110	-110786.631	-4552.203	-14.478	18.966180
G19-11	G19-21	90-17-22	32-07-25	15.615	13.224	8.303	-110773.407	-4543.900	-4.065	-53.755560
G19-21	K19-25	89-24-19	301-31-44	2.486	1.300	-2.119	-110772.107	-4546.019	2.119	2.754700
									倍面積	77.562236
									面積	38.7811180
									坪数	11.73

* * 面積計算 (倍橫距法) * *

地 器械点	番 : 19-6 視準点	内角	方向角	距離	緯距	經距	X座標	Y座標	倍橫距	倍面積
G19-4	G19-5	87-30-02	209-07-38	12.175	-10.635	-5.926	-110768.830	-4574.601	-5.926	63.023010
G19-5	G19-6	135-33-53	164-41-31	5.026	-4.848	1.327	-110773.678	-4573.274	-10.525	51.025200
G19-6	G19-17	135-56-27	120-37-58	1.128	-0.575	0.971	-110774.253	-4572.303	-8.227	4.730525
G19-17	G19-7	180-04-43	120-42-41	6.309	-3.222	5.424	-110777.475	-4566.879	-1.832	5.902704
G19-7	G19-8	180-59-32	121-42-13	6.297	-3.309	5.357	-110780.784	-4561.522	8.949	-29.612241
G19-8	G19-9	180-24-40	122-06-53	0.666	-0.354	0.564	-110781.138	-4560.958	14.870	-5.263980
G19-9	G19-10	180-04-32	122-11-25	7.852	-4.183	6.645	-110785.321	-4554.313	22.079	-92.356457
G19-10	K19-25	89-55-30	32-06-55	15.601	13.214	8.294	-110772.107	-4546.019	37.018	489.155852
K19-25	G19-20	89-25-19	301-32-14	6.099	3.190	-5.198	-110768.917	-4551.217	40.114	127.963660
G19-20	J19-19	179-57-18	301-29-32	10.689	5.584	-9.115	-110763.333	-4560.332	25.801	144.072784
J19-19	G19-4	180-08-04	301-37-36	9.798	5.138	-8.343	-110758.195	-4568.675	8.343	42.866334
									倍面積	801.507391
									面積	400.7536955
									坪数	121.22



* * 面積計算 (倍横距法) * *

地番 : 20-1 器械点 視準点	内角	方向角	距離	緯距	經距	X座標	Y座標	倍横距	倍面積
K20-17 G20-12	90-26-28	32-25-30	20.539	17.337	11.013	-110686.028	-4466.305	11.013	190.932381
G20-12 G20-13	134-43-14	347-08-44	5.021	4.895	-1.117	-110681.133	-4467.422	20.909	102.349555
G20-13 K20-14	134-50-15	301-58-59	21.749	11.520	-18.448	-110669.613	-4485.870	1.344	15.482880
K20-14 K20-18	90-26-32	212-25-31	24.099	-20.342	-12.922	-110689.955	-4498.792	-30.026	610.788892
K20-18 K20-17	89-33-31	121-59-02	25.317	-13.410	21.474	-110703.365	-4477.318	-21.474	287.966340
								倍面積	1207.520048
								面積	603.7600240
								坪数	182.63

* * 面積計算 (倍橫距法) * *

地 器械点	番 : 20-2 視準点	内角	方向角	距離	緯距	經距	X座標	Y座標	倍橫距	倍面積
K20-16	K20-17	90-26-17	32-25-19	10.790	9.108	5.785	-110703.365	-4477.318	5.785	52.689780
K20-17	K20-18	89-33-43	301-59-02	25.317	13.410	-21.474	-110689.955	-4498.792	-9.904	-132.812640
K20-18	K20-19	90-26-17	212-25-19	10.790	-9.108	-5.785	-110699.063	-4504.577	-37.163	338.480604
K20-19	K20-16	89-33-43	121-59-02	25.317	-13.410	21.474	-110712.473	-4483.103	-21.474	287.966340
									倍面積	546.324084
									面積	273.1620420
									坪數	82.63

* * 面積計算 (倍橫距法) * *

地 器械点	番 : 20-3 視準点	内角	方向角	距離	緯距	經距	X座標	Y座標	倍橫距	倍面積
K20-19	K20-15	90-26-24	212-25-26	4.745	-4.005	-2.544	-110703.068	-4507.121	-2.544	10.188720
K20-15	K20-20	89-34-53	122-00-19	0.330	-0.175	0.280	-110703.243	-4506.841	-4.808	0.841400
K20-20	G20-11	179-58-42	121-59-01	24.987	-13.235	21.194	-110716.478	-4485.647	16.666	-220.574510
G20-11	K20-16	90-26-25	32-25-26	4.745	4.005	2.544	-110712.473	-4483.103	40.404	161.818020
K20-16	K20-19	89-33-36	301-59-02	25.317	13.410	-21.474	-110699.063	-4504.577	21.474	287.966340
									倍面積	240.239970
									面積	120.1199850
									坪数	36.33

* * 面積計算 (倍横距法) * *

地 器械点	番 : 20-4 視準点	内角	方向角	距離	緯距	經距	X座標	Y座標	倍横距	倍面積
K20-23	G20-11	90-21-59	32-22-21	13.100	11.064	7.014	-110716.478	-4485.647	7.014	77.602896
G20-11	K20-20	89-36-40	301-59-01	24.987	13.235	-21.194	-110703.243	-4506.841	-7.166	-94.842010
K20-20	K20-22	89-27-23	211-26-24	7.736	-6.600	-4.035	-110709.843	-4510.876	-32.395	213.807000
K20-22	K20-24	180-00-43	211-27-07	5.355	-4.568	-2.794	-110714.411	-4513.670	-39.224	179.175232
K20-24	K20-23	90-33-15	122-00-22	24.775	-13.131	21.009	-110727.542	-4492.661	-21.009	275.869179
									倍面積	651.612297
									面積	325.8061485
									坪数	98.55

* * 面積計算 (倍橫距法) * *

地 器械点	番 : 20-5 視準点	内角	方向角	距離	緯距	經距	X座標	Y座標	倍橫距	倍面積
K20-24	G20-14	89-24-59	211-25-21	1.157	-0.987	-0.603	-110715.398	-4514.273	-0.603	0.595161
G20-14	G20-10	90-35-01	122-00-22	24.756	-13.121	20.993	-110728.519	-4493.280	19.787	-259.625227
G20-10	K20-23	90-21-04	32-21-26	1.157	0.977	0.619	-110727.542	-4492.661	41.399	40.446823
K20-23	K20-24	89-38-56	302-00-22	24.775	13.131	-21.009	-110714.411	-4513.670	21.009	275.869179
									倍面積	57.285936
									面積	28.6429680
									坪数	8.66

* * 面積計算 (倍橫距法) * *

地 器械点	番 : 20-6 視準点	内角	方向角	距離	緯距	經距	X座標	Y座標	倍橫距	倍面積
G20-10	G20-14	89-36-43	302-00-22	24.756	13.121	-20.993	-110715.398	-4514.273	-20.993	-275.449153
G20-14	K20-26	89-25-59	211-26-21	4.237	-3.615	-2.210	-110719.013	-4516.483	-44.196	159.768540
K20-26	G20-6	180-00-13	211-26-34	34.240	-29.212	-17.861	-110748.225	-4534.344	-64.267	1877.367604
G20-6	G20-7	90-33-54	122-00-28	20.821	-11.036	17.656	-110759.261	-4516.688	-64.472	711.512992
G20-7	G20-8	134-59-14	76-59-42	4.999	1.125	4.871	-110758.136	-4511.817	-41.945	-47.188125
G20-8	G20-9	135-00-08	31-59-50	31.003	26.293	16.428	-110731.843	-4495.389	-20.646	-542.845278
G20-9	G20-10	180-23-49	32-23-39	3.937	3.324	2.109	-110728.519	-4493.280	-2.109	-7.010316
									倍面積	1876.156264
									面積	938.0781320
									坪数	283.76

* * 面積計算 (倍橫距法) * *

地 器械点	番 : 20-7-1 視準点	内角	方向角	距離	緯距	經距	X座標	Y座標	倍橫距	倍面積
K20-25	G20-4	87-05-35	209-04-28	30.837	-26.951	-14.985	-110731.864	-4554.049	-14.985	403.860735
G20-4	G20-5	136-23-21	165-27-49	4.972	-4.813	1.248	-110736.677	-4552.801	-28.722	138.238986
G20-5	G20-6	136-34-10	122-01-59	21.772	-11.548	18.457	-110748.225	-4534.344	-9.017	104.128316
G20-6	K20-26	89-24-35	31-26-34	34.240	29.212	17.861	-110719.013	-4516.483	27.301	797.516812
K20-26	K20-25	90-32-19	301-58-53	26.622	14.100	-22.581	-110704.913	-4539.064	22.581	318.392100
									倍面積	1762.136949
									面積	881.0684745
									坪数	266.52

* * 面積計算 (倍橫距法) * *

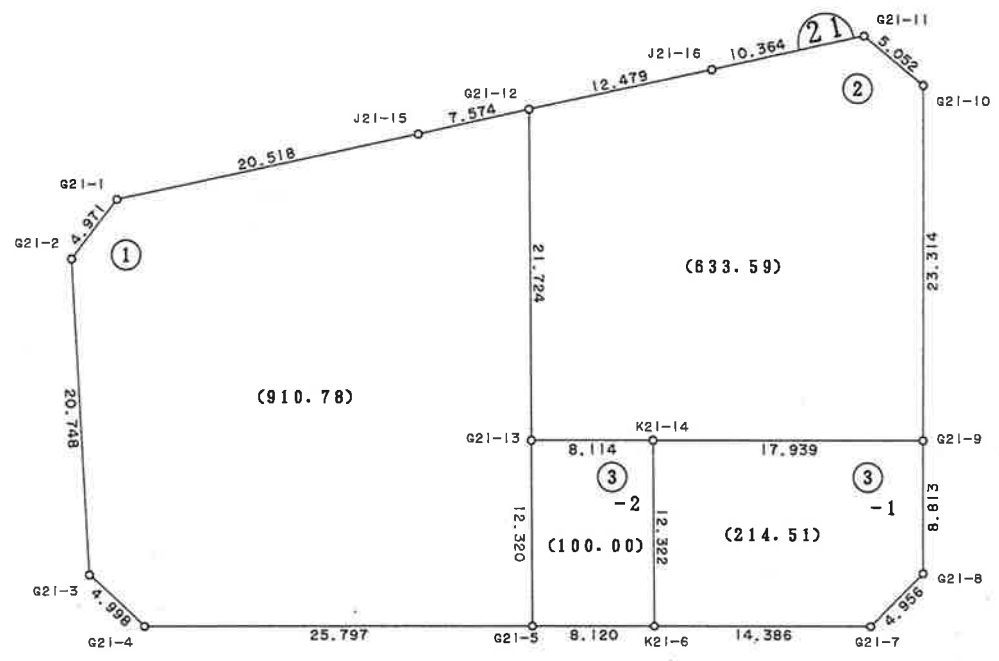
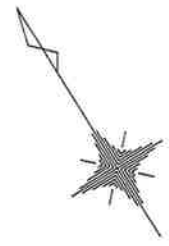
地 器械点	番 : 20-7-2 視準点	内角	方向角	距離	緯距	經距	X座標	Y座標	倍橫距	倍面積
K20-21	K20-25	87-05-19	209-04-22	10.763	-9.407	-5.230	-110704.913	-4539.064	-5.230	49.198610
K20-25	K20-26	92-54-31	121-58-53	26.622	-14.100	22.581	-110719.013	-4516.483	12.121	-170.906100
K20-26	G20-14	89-27-28	31-26-21	4.237	3.615	2.210	-110715.398	-4514.273	36.912	133.436880
G20-14	K20-24	179-59-00	31-25-21	1.157	0.987	0.603	-110714.411	-4513.670	39.725	39.208575
K20-24	K20-22	180-01-46	31-27-07	5.355	4.568	2.794	-110709.843	-4510.876	43.122	196.981296
K20-22	K20-21	90-31-56	301-59-03	27.067	14.337	-22.958	-110695.506	-4533.834	22.958	329.148846
									倍面積	577.068107
									面積	288.5340535
									坪数	87.28

* * 面積計算 (倍橫距法) * *

地 器 械 點	番 號 視 準 點	20-8 內 角	方 向 角	距 離	緯 距	經 距	X 座 標	Y 座 標	倍 橫 距	倍 面 積
K20-22	K20-20	89-27-21	31-26-24	7.736	6.600	4.035	-110703.243	-4506.841	4.035	26.631000
K20-20	K20-15	90-33-55	302-00-19	0.330	0.175	-0.280	-110703.068	-4507.121	7.790	1.363250
K20-15	G20-3	179-58-42	301-59-01	27.056	14.331	-22.949	-110688.737	-4530.070	-15.439	-221.256309
G20-3	K20-21	87-05-36	209-04-37	7.745	-6.769	-3.764	-110695.506	-4533.834	-42.152	285.326888
K20-21	K20-22	92-54-26	121-59-03	27.067	-14.337	22.958	-110709.843	-4510.876	-22.958	329.148846
									倍面積	421.213675
									面積	210.6068375
									坪數	63.70

* * 面積計算 (倍横距法) * *

地 器械点	番 : 20-9 視準点	内角	方向角	距離	緯距	經距	X座標	Y座標	倍横距	倍面積
K20-14	G20-1	89-33-23	301-58-54	25.721	13.623	-21.817	-110655.990	-4507.687	-21.817	-297.212991
G20-1	G20-2	133-57-56	255-56-50	5.020	-1.219	-4.870	-110657.209	-4512.557	-48.504	59.126376
G20-2	G20-3	133-06-14	209-03-04	36.065	-31.528	-17.513	-110688.737	-4530.070	-70.887	2234.925336
G20-3	K20-15	92-55-57	121-59-01	27.056	-14.331	22.949	-110703.068	-4507.121	-65.451	937.978281
K20-15	K20-19	90-26-25	32-25-26	4.745	4.005	2.544	-110699.063	-4504.577	-39.958	-160.031790
K20-19	K20-18	179-59-53	32-25-19	10.790	9.108	5.785	-110689.955	-4498.792	-31.629	-288.076932
K20-18	K20-14	180-00-12	32-25-31	24.099	20.342	12.922	-110669.613	-4485.870	-12.922	-262.859324
									倍面積	2223.848956
									面積	1111.9244780
									坪数	336.35



* * 面積計算 (倍橫距法) * *

地 器械点	番 : 21-1 視準点	内角	方向角	距離	緯距	經距	X座標	Y座標	倍橫距	倍面積
G21-1	G21-2	139-27-23	249-24-37	4.971	-1.748	-4.653	-110625.025	-4494.641	-4.653	8.133444
G21-2	G21-3	139-40-57	209-05-34	20.748	-18.130	-10.088	-110643.155	-4504.729	-19.394	351.613220
G21-3	G21-4	136-26-54	165-32-28	4.998	-4.840	1.248	-110647.995	-4503.481	-28.234	136.652560
G21-4	G21-5	136-28-28	122-00-56	25.797	-13.676	21.873	-110661.671	-4481.608	-5.113	69.925388
G21-5	G21-13	89-59-55	32-00-51	12.320	10.446	6.531	-110651.225	-4475.077	23.291	243.297786
G21-13	G21-12	179-59-52	32-00-43	21.724	18.421	11.516	-110632.804	-4463.561	41.338	761.487298
G21-12	J21-15	77-27-40	289-28-23	7.574	2.525	-7.141	-110630.279	-4470.702	45.713	115.425325
J21-15	G21-1	180-28-51	289-57-14	20.518	7.002	-19.286	-110623.277	-4489.988	19.286	135.040572
									倍面積	1821.575593
									面積	910.7877965
									坪数	275.51

* * 面積計算 (倍橫距法) * *

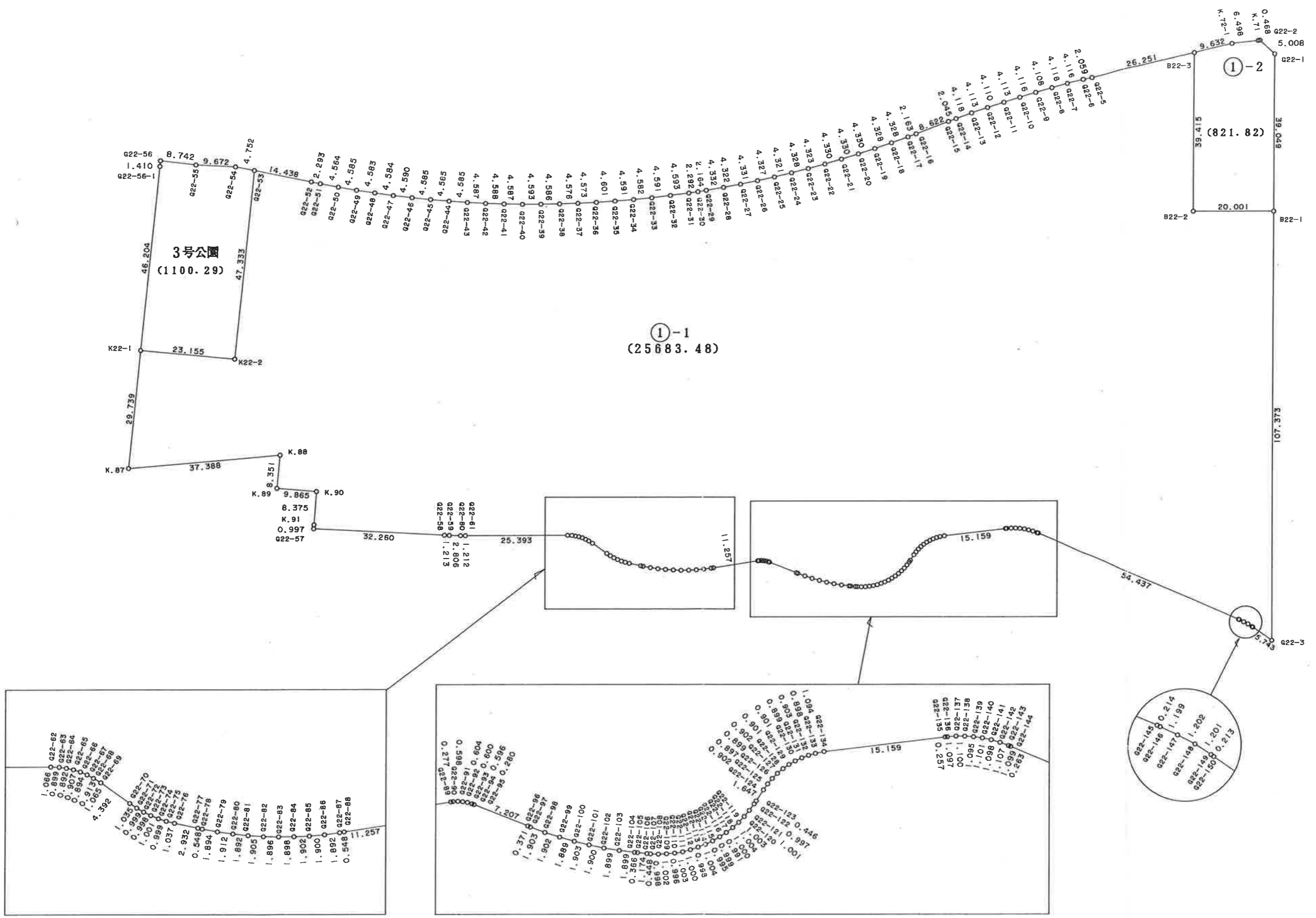
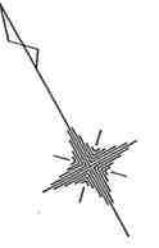
地 器械点	番 : 21-2 視準点	内角	方向角	距離	緯距	經距	X座標	Y座標	倍橫距	倍面積
G21-12	G21-13	102-01-18	212-00-43	21.724	-18.421	-11.516	-110651.225	-4475.077	-11.516	212.136236
G21-13	K21-14	89-59-23	122-00-06	8.114	-4.300	6.881	-110655.525	-4468.196	-16.151	69.449300
K21-14	G21-9	179-59-53	121-59-59	17.939	-9.506	15.213	-110665.031	-4452.983	5.943	-56.494158
G21-9	G21-10	90-28-08	32-28-07	23.314	19.670	12.516	-110645.361	-4440.467	33.672	662.328240
G21-10	G21-11	128-54-49	341-22-56	5.052	4.788	-1.613	-110640.573	-4442.080	44.575	213.425100
G21-11	J21-16	128-22-22	289-45-18	10.364	3.503	-9.754	-110637.070	-4451.834	33.208	116.327624
J21-16	G21-12	180-14-07	289-59-25	12.479	4.266	-11.727	-110632.804	-4463.561	11.727	50.027382
									倍面積	1267.199724
									面積	633.5998620
									坪数	191.66

* * 面積計算 (倍橫距法) * *

地 器械点	番 : 21-3-1 視準点	内角	方向角	距離	緯距	經距	X座標	Y座標	倍橫距	倍面積
K21-14	K21-6	89-59-11	211-59-10	12.322	-10.451	-6.527	-110665.976	-4474.723	-6.527	68.213677
K21-6	G21-7	90-03-00	122-02-10	14.386	-7.631	12.195	-110673.607	-4462.528	-0.859	6.555029
G21-7	G21-8	134-44-57	76-47-07	4.956	1.133	4.825	-110672.474	-4457.703	16.161	18.310413
G21-8	G21-9	135-35-44	32-22-51	8.813	7.443	4.720	-110665.031	-4452.983	25.706	191.329758
G21-9	K21-14	89-37-08	301-59-59	17.939	9.506	-15.213	-110655.525	-4468.196	15.213	144.614778
									倍面積	429.023655
									面積	214.5118275
									坪数	64.88

* * 面積計算 (倍橫距法) * *

地 器 械 點	番 號 視 準 點	21-3-2 內 角	方 向 角	距 離	緯 距	經 距	X 座 標	Y 座 標	倍 橫 距	倍 面 積
G21-13	G21-5	90-00-45	212-00-51	12.320	-10.446	-6.531	-110661.671	-4481.608	-6.531	68.222826
G21-5	K21-6	90-00-09	122-01-00	8.120	-4.305	6.885	-110665.976	-4474.723	-6.177	26.591985
K21-6	K21-14	89-58-10	31-59-10	12.322	10.451	6.527	-110655.525	-4468.196	7.235	75.612985
K21-14	G21-13	90-00-56	302-00-06	8.114	4.300	-6.881	-110651.225	-4475.077	6.881	29.588300
									倍面積	200.016096
									面積	100.0080480
									坪數	30.25



* * 面積計算 (倍横距法) * *

地 器 械 点	番 : 22-1-1 視準点	内 角	方 向 角	距 離	緯 距	經 距	X 座 標	Y 座 標	倍 横 距	倍 面 積
G22-5	G22-6	179-58-30	285-39-45	2.059	0.556	-1.983	-110603.336	-4550.664	-1.983	-1.102548
G22-6	G22-7	179-11-27	284-51-12	4.116	1.055	-3.978	-110602.281	-4554.642	-7.944	-8.380920
G22-7	G22-8	179-19-53	284-11-05	4.118	1.009	-3.992	-110601.272	-4558.634	-15.914	-16.057226
G22-8	G22-9	179-06-51	283-17-56	4.108	0.945	-3.998	-110600.327	-4562.632	-23.904	-22.589280
G22-9	G22-10	178-52-36	282-10-32	4.116	0.868	-4.023	-110599.459	-4566.655	-31.925	-27.710900
G22-10	G22-11	179-22-00	281-32-32	4.113	0.823	-4.030	-110598.636	-4570.685	-39.978	-32.901894
G22-11	G22-12	179-18-50	280-51-22	4.110	0.774	-4.036	-110597.862	-4574.721	-48.044	-37.186056
G22-12	G22-13	179-05-55	279-57-17	4.113	0.711	-4.051	-110597.151	-4578.772	-56.131	-39.909141
G22-13	G22-14	178-58-20	278-55-37	4.118	0.639	-4.068	-110596.512	-4582.840	-64.250	-41.055750
G22-14	G22-15	179-42-23	278-38-00	2.045	0.307	-2.022	-110596.205	-4584.862	-70.340	-21.594380
G22-15	G22-16	179-42-33	278-20-33	8.622	1.251	-8.531	-110594.954	-4593.393	-80.893	-101.197143
G22-16	G22-17	180-03-26	278-23-59	2.163	0.316	-2.140	-110594.638	-4595.533	-91.564	-28.934224
G22-17	G22-18	180-39-12	279-03-11	4.328	0.681	-4.274	-110593.957	-4599.807	-97.978	-66.723018
G22-18	G22-19	181-09-21	280-12-32	4.328	0.767	-4.259	-110593.190	-4604.066	-106.511	-81.693937
G22-19	G22-20	180-48-56	281-01-28	4.330	0.828	-4.250	-110592.362	-4608.316	-115.020	-95.236560
G22-20	G22-21	180-48-35	281-50-03	4.330	0.888	-4.238	-110591.474	-4612.554	-123.508	-109.675104
G22-21	G22-22	180-50-17	282-40-20	4.330	0.950	-4.225	-110590.524	-4616.779	-131.971	-125.372450
G22-22	G22-23	181-14-08	283-54-28	4.323	1.039	-4.196	-110589.485	-4620.975	-140.392	-145.867288
G22-23	G22-24	180-46-26	284-40-54	4.328	1.097	-4.187	-110588.388	-4625.162	-148.775	-163.206175
G22-24	G22-25	181-06-39	285-47-33	4.321	1.176	-4.158	-110587.212	-4629.320	-157.120	-184.773120
G22-25	G22-26	180-48-14	286-35-47	4.327	1.236	-4.147	-110585.976	-4633.467	-165.425	-204.465300
G22-26	G22-27	180-58-51	287-34-38	4.331	1.308	-4.129	-110584.668	-4637.596	-173.701	-227.200908
G22-27	G22-28	180-49-57	288-24-35	4.322	1.365	-4.101	-110583.303	-4641.697	-181.931	-248.335815
G22-28	G22-29	181-06-16	289-30-51	4.332	1.447	-4.083	-110581.856	-4645.780	-190.115	-275.096405
G22-29	G22-30	180-47-16	290-18-07	2.164	0.751	-2.030	-110581.105	-4647.810	-196.228	-147.367228
G22-30	G22-31	180-17-00	290-35-07	2.292	0.806	-2.146	-110580.299	-4649.956	-200.404	-161.525624
G22-31	G22-32	180-35-18	291-10-25	4.593	1.659	-4.283	-110578.640	-4654.239	-206.833	-343.135947

器械点	視準点	内角	方向角	距離	緯距	經距	X座標	Y座標	倍橫距	倍面積
G22-32	G22-33	181-14-06	292-24-31	4.591	1.750	-4.244	-110576.890	-4658.483	-215.360	-376.880000
G22-33	G22-34	180-57-21	293-21-52	4.582	1.817	-4.206	-110575.073	-4662.689	-223.810	-406.662770
G22-34	G22-35	180-52-41	294-14-33	4.591	1.885	-4.186	-110573.188	-4666.875	-232.202	-437.700770
G22-35	G22-36	180-59-49	295-14-22	4.601	1.962	-4.162	-110571.226	-4671.037	-240.550	-471.959100
G22-36	G22-37	181-02-44	296-17-06	4.573	2.025	-4.100	-110569.201	-4675.137	-248.812	-503.844300
G22-37	G22-38	180-54-26	297-11-32	4.576	2.091	-4.070	-110567.110	-4679.207	-256.982	-537.349362
G22-38	G22-39	180-50-13	298-01-45	4.586	2.155	-4.048	-110564.955	-4683.255	-265.100	-571.290500
G22-39	G22-40	181-01-49	299-03-34	4.593	2.231	-4.015	-110562.724	-4687.270	-273.163	-609.426653
G22-40	G22-41	181-11-43	300-15-17	4.587	2.311	-3.962	-110560.413	-4691.232	-281.140	-649.714540
G22-41	G22-42	180-48-58	301-04-15	4.588	2.368	-3.930	-110558.045	-4695.162	-289.032	-684.427776
G22-42	G22-43	181-02-21	302-06-36	4.587	2.438	-3.885	-110555.607	-4699.047	-296.847	-723.712986
G22-43	G22-44	181-04-52	303-11-28	4.585	2.510	-3.837	-110553.097	-4702.884	-304.569	-764.468190
G22-44	G22-45	180-54-04	304-05-32	4.585	2.570	-3.797	-110550.527	-4706.681	-312.203	-802.361710
G22-45	G22-46	180-53-52	304-59-24	4.585	2.629	-3.756	-110547.898	-4710.437	-319.756	-840.638524
G22-46	G22-47	181-00-49	306-00-13	4.590	2.698	-3.713	-110545.200	-4714.150	-327.225	-882.853050
G22-47	G22-48	181-10-07	307-10-20	4.584	2.770	-3.653	-110542.430	-4717.803	-334.591	-926.817070
G22-48	G22-49	180-35-43	307-46-03	4.583	2.807	-3.623	-110539.623	-4721.426	-341.867	-959.620669
G22-49	G22-50	181-14-23	309-00-26	4.585	2.886	-3.563	-110536.737	-4724.989	-349.053	-1007.366958
G22-50	G22-51	180-58-48	309-59-14	4.564	2.933	-3.497	-110533.804	-4728.486	-356.113	-1044.479429
G22-51	G22-52	180-46-07	310-45-21	2.293	1.497	-1.737	-110532.307	-4730.223	-361.347	-540.936459
G22-52	G22-53	179-58-10	310-43-31	14.438	9.420	-10.942	-110522.887	-4741.165	-374.026	-3523.324920
G22-53	K22-2	83-52-00	214-35-31	47.333	-38.965	-26.872	-110561.852	-4768.037	-411.840	16047.345600
K22-2	K22-1	269-58-04	304-33-35	23.155	13.135	-19.069	-110548.717	-4787.106	-457.781	-6012.953435
K22-1	K.87	89-59-36	214-33-11	29.739	-24.493	-16.867	-110573.210	-4803.973	-493.717	12092.610481
K.87	K.88	79-31-14	114-04-25	37.388	-15.251	34.136	-110588.461	-4769.837	-476.448	7266.308448
K.88	K.89	279-59-01	214-03-26	8.351	-6.919	-4.677	-110595.380	-4774.514	-446.989	3092.716891
K.89	K.90	89-51-01	123-54-27	9.865	-5.503	8.187	-110600.883	-4766.327	-443.479	2440.464937
K.90	K.91	269-09-16	213-03-43	8.375	-7.019	-4.569	-110607.902	-4770.896	-439.861	3087.384359

器械点	視準点	内角	方向角	距離	緯距	經距	X座標	Y座標	倍橫距	倍面積
K.91	G22-57	180-04-13	213-07-56	0.997	-0.835	-0.545	-110608.737	-4771.441	-444.975	371.554125
G22-57	G22-58	88-50-54	121-58-50	32.260	-17.086	27.364	-110625.823	-4744.077	-418.156	7144.613416
G22-58	G22-59	179-34-28	121-33-18	1.213	-0.635	1.034	-110626.458	-4743.043	-389.758	247.496330
G22-59	G22-60	178-56-22	120-29-40	2.806	-1.424	2.418	-110627.882	-4740.625	-386.306	550.099744
G22-60	G22-61	179-00-36	119-30-16	1.212	-0.597	1.055	-110628.479	-4739.570	-382.833	228.551301
G22-61	G22-62	179-28-34	118-58-50	25.393	-12.303	22.213	-110640.782	-4717.357	-359.565	4423.728195
G22-62	G22-63	182-07-50	121-06-40	1.066	-0.551	0.913	-110641.333	-4716.444	-336.439	185.377889
G22-63	G22-64	186-17-39	127-24-19	0.899	-0.546	0.714	-110641.879	-4715.730	-334.812	182.807352
G22-64	G22-65	183-54-49	131-19-08	0.892	-0.589	0.670	-110642.468	-4715.060	-333.428	196.389092
G22-65	G22-66	185-03-55	136-23-03	0.907	-0.657	0.626	-110643.125	-4714.434	-332.132	218.210724
G22-66	G22-67	186-42-27	143-05-30	0.894	-0.715	0.537	-110643.840	-4713.897	-330.969	236.642835
G22-67	G22-68	185-15-20	148-20-50	0.913	-0.777	0.479	-110644.617	-4713.418	-329.953	256.373481
G22-68	G22-69	182-10-29	150-31-19	1.065	-0.927	0.524	-110645.544	-4712.894	-328.950	304.936650
G22-69	G22-70	184-26-09	154-57-28	4.392	-3.979	1.859	-110649.523	-4711.035	-326.567	1299.410093
G22-70	G22-71	177-44-05	152-41-33	1.035	-0.920	0.475	-110650.443	-4710.560	-324.233	298.294360
G22-71	G22-72	176-56-37	149-38-10	0.999	-0.862	0.505	-110651.305	-4710.055	-323.253	278.644086
G22-72	G22-73	175-28-48	145-06-58	0.998	-0.819	0.571	-110652.124	-4709.484	-322.177	263.862963
G22-73	G22-74	176-59-02	142-06-00	1.001	-0.790	0.615	-110652.914	-4708.869	-320.991	253.582890
G22-74	G22-75	175-05-24	137-11-24	0.999	-0.733	0.679	-110653.647	-4708.190	-319.697	234.337901
G22-75	G22-76	176-05-27	133-16-51	1.037	-0.711	0.755	-110654.358	-4707.435	-318.263	226.284993
G22-76	G22-77	177-59-09	131-16-00	2.932	-1.934	2.204	-110656.292	-4705.231	-315.304	609.797936
G22-77	G22-78	179-22-07	130-38-07	0.548	-0.357	0.416	-110656.649	-4704.815	-312.684	111.628188
G22-78	G22-79	179-06-58	129-45-05	1.894	-1.211	1.456	-110657.860	-4703.359	-310.812	376.393332
G22-79	G22-80	177-40-55	127-26-00	1.912	-1.162	1.518	-110659.022	-4701.841	-307.838	357.707756
G22-80	G22-81	177-38-35	125-04-35	1.892	-1.087	1.548	-110660.109	-4700.293	-304.772	331.287164
G22-81	G22-82	177-37-15	122-41-50	1.905	-1.029	1.603	-110661.138	-4698.690	-301.621	310.368009
G22-82	G22-83	178-11-01	120-52-51	1.896	-0.973	1.627	-110662.111	-4697.063	-298.391	290.334443
G22-83	G22-84	177-37-42	118-30-33	1.898	-0.906	1.668	-110663.017	-4695.395	-295.096	267.356976

器械点	視準点	内角	方向角	距離	緯距	經距	X座標	Y座標	倍橫距	倍面積
G22-84	G22-85	178-08-12	116-38-45	1.902	-0.853	1.700	-110663.870	-4693.695	-291.728	248.843984
G22-85	G22-86	177-21-23	114-00-08	1.900	-0.773	1.736	-110664.643	-4691.959	-288.292	222.849716
G22-86	G22-87	177-19-36	111-19-44	1.892	-0.688	1.762	-110665.331	-4690.197	-284.794	195.938272
G22-87	G22-88	178-51-35	110-11-19	0.548	-0.189	0.514	-110665.520	-4689.683	-282.518	53.395902
G22-88	G22-89	179-59-40	110-10-59	11.257	-3.884	10.566	-110669.404	-4679.117	-271.438	1054.265192
G22-89	G22-90	182-18-34	112-29-33	0.277	-0.106	0.256	-110669.510	-4678.861	-260.616	27.625296
G22-90	G22-91	183-05-11	115-34-44	0.598	-0.258	0.539	-110669.768	-4678.322	-259.821	67.033818
G22-91	G22-92	188-20-53	123-55-37	0.604	-0.337	0.501	-110670.105	-4677.821	-258.781	87.209197
G22-92	G22-93	183-37-48	127-33-25	0.600	-0.366	0.476	-110670.471	-4677.345	-257.804	94.356264
G22-93	G22-94	188-11-26	135-44-51	0.596	-0.427	0.416	-110670.898	-4676.929	-256.912	109.701424
G22-94	G22-95	184-45-41	140-30-32	0.280	-0.216	0.178	-110671.114	-4676.751	-256.318	55.364688
G22-95	G22-96	180-20-32	140-51-04	7.207	-5.589	4.550	-110676.703	-4672.201	-251.590	1406.136510
G22-96	G22-97	181-35-57	142-27-01	0.371	-0.294	0.226	-110676.997	-4671.975	-246.814	72.563316
G22-97	G22-98	177-00-14	139-27-15	1.903	-1.446	1.237	-110678.443	-4670.738	-245.351	354.777546
G22-98	G22-99	177-30-22	136-57-37	1.902	-1.390	1.298	-110679.833	-4669.440	-242.816	337.514240
G22-99	G22-100	178-12-41	135-10-18	1.889	-1.340	1.332	-110681.173	-4668.108	-240.186	321.849240
G22-100	G22-101	177-44-31	132-54-49	1.903	-1.296	1.394	-110682.469	-4666.714	-237.460	307.748160
G22-101	G22-102	178-10-54	131-05-43	1.900	-1.249	1.432	-110683.718	-4665.282	-234.634	293.057866
G22-102	G22-103	177-02-30	128-08-13	1.899	-1.173	1.494	-110684.891	-4663.788	-231.708	271.793484
G22-103	G22-104	178-08-52	126-17-05	1.899	-1.124	1.531	-110686.015	-4662.257	-228.683	257.039692
G22-104	G22-105	178-21-39	124-38-44	0.366	-0.208	0.301	-110686.223	-4661.956	-226.851	47.185008
G22-105	G22-106	180-05-12	124-43-56	1.174	-0.669	0.965	-110686.892	-4660.991	-225.585	150.916365
G22-106	G22-107	178-59-36	123-43-32	0.448	-0.249	0.373	-110687.141	-4660.618	-224.247	55.837503
G22-107	G22-108	177-27-53	121-11-25	0.998	-0.517	0.854	-110687.658	-4659.764	-223.020	115.301340
G22-108	G22-109	175-37-50	116-49-15	1.002	-0.452	0.894	-110688.110	-4658.870	-221.272	100.014944
G22-109	G22-110	176-14-30	113-03-45	0.996	-0.390	0.916	-110688.500	-4657.954	-219.462	85.590180
G22-110	G22-111	176-05-43	109-09-28	1.003	-0.329	0.947	-110688.829	-4657.007	-217.599	71.590071
G22-111	G22-112	176-08-33	105-18-01	1.000	-0.264	0.965	-110689.093	-4656.042	-215.687	56.941368

器械点	視準点	内角	方向角	距離	緯距	經距	X座標	Y座標	倍橫距	倍面積
G22-112	G22-113	176-05-19	101-23-20	0.998	-0.197	0.978	-110689.290	-4655.064	-213.744	42.107568
G22-113	G22-114	175-49-16	97-12-36	1.004	-0.126	0.996	-110689.416	-4654.068	-211.770	26.683020
G22-114	G22-115	176-18-19	93-30-55	0.995	-0.061	0.993	-110689.477	-4653.075	-209.781	12.796641
G22-115	G22-116	175-13-23	88-44-18	0.999	0.022	0.999	-110689.455	-4652.076	-207.789	-4.571358
G22-116	G22-117	176-55-14	85-39-32	0.991	0.075	0.988	-110689.380	-4651.088	-205.802	-15.435150
G22-117	G22-118	175-49-49	81-29-21	1.000	0.148	0.989	-110689.232	-4650.099	-203.825	-30.166100
G22-118	G22-119	176-26-24	77-55-45	1.004	0.210	0.982	-110689.022	-4649.117	-201.854	-42.389340
G22-119	G22-120	175-37-24	73-33-09	1.003	0.284	0.962	-110688.738	-4648.155	-199.910	-56.774440
G22-120	G22-121	175-37-25	69-10-34	1.001	0.356	0.936	-110688.382	-4647.219	-198.012	-70.492272
G22-121	G22-122	176-43-38	65-54-12	0.997	0.407	0.910	-110687.975	-4646.309	-196.166	-79.839562
G22-122	G22-123	176-26-23	62-20-35	0.446	0.207	0.395	-110687.768	-4645.914	-194.861	-40.336227
G22-123	G22-124	179-53-37	62-14-12	1.647	0.767	1.457	-110687.001	-4644.457	-193.009	-148.037903
G22-124	G22-125	182-13-15	64-27-27	0.902	0.389	0.814	-110686.612	-4643.643	-190.738	-74.197082
G22-125	G22-126	185-19-49	69-47-16	0.897	0.310	0.842	-110686.302	-4642.801	-189.082	-58.615420
G22-126	G22-127	183-47-38	73-34-54	0.899	0.254	0.862	-110686.048	-4641.939	-187.378	-47.594012
G22-127	G22-128	185-37-09	79-12-03	0.902	0.169	0.886	-110685.879	-4641.053	-185.630	-31.371470
G22-128	G22-129	184-25-26	83-37-29	0.901	0.100	0.895	-110685.779	-4640.158	-183.849	-18.384900
G22-129	G22-130	185-36-44	89-14-13	0.901	0.012	0.901	-110685.767	-4639.257	-182.053	-2.184636
G22-130	G22-131	185-21-26	94-35-39	0.899	-0.072	0.896	-110685.839	-4638.361	-180.256	12.978432
G22-131	G22-132	183-37-00	98-12-39	0.903	-0.129	0.894	-110685.968	-4637.467	-178.466	23.022114
G22-132	G22-133	185-26-19	103-38-58	0.898	-0.212	0.873	-110686.180	-4636.594	-176.699	37.460188
G22-133	G22-134	183-41-31	107-20-29	1.094	-0.326	1.044	-110686.506	-4635.550	-174.782	56.978932
G22-134	G22-135	184-56-17	112-16-46	15.159	-5.747	14.027	-110692.253	-4621.523	-159.711	917.859117
G22-135	G22-136	180-35-51	112-52-37	0.257	-0.100	0.237	-110692.353	-4621.286	-145.447	14.544700
G22-136	G22-137	181-37-55	114-30-32	1.097	-0.455	0.998	-110692.808	-4620.288	-144.212	65.616460
G22-137	G22-138	185-19-12	119-49-44	1.100	-0.547	0.954	-110693.355	-4619.334	-142.260	77.816220
G22-138	G22-139	183-19-28	123-09-12	1.095	-0.599	0.917	-110693.954	-4618.417	-140.389	84.093011
G22-139	G22-140	183-12-24	126-21-36	1.101	-0.653	0.887	-110694.607	-4617.530	-138.585	90.496005

器械点	視準点	内角	方向角	距離	緯距	經距	X座標	Y座標	倍橫距	倍面積
G22-140	G22-141	185-10-10	131-31-46	1.098	-0.728	0.822	-110695.335	-4616.708	-136.876	99.645728
G22-141	G22-142	184-25-18	135-57-04	1.107	-0.796	0.770	-110696.131	-4615.938	-135.284	107.686064
G22-142	G22-143	184-28-37	140-25-41	1.099	-0.847	0.700	-110696.978	-4615.238	-133.814	113.340458
G22-143	G22-144	181-02-53	141-28-34	0.263	-0.206	0.164	-110697.184	-4615.074	-132.950	27.387700
G22-144	G22-145	181-03-40	142-32-14	54.437	-43.209	33.111	-110740.393	-4581.963	-99.675	4306.857075
G22-145	G22-146	182-44-02	145-16-16	0.214	-0.176	0.122	-110740.569	-4581.841	-66.442	11.693792
G22-146	G22-147	179-49-09	145-05-25	1.199	-0.983	0.686	-110741.552	-4581.155	-65.634	64.518222
G22-147	G22-148	181-26-40	146-32-05	1.202	-1.003	0.663	-110742.555	-4580.492	-64.285	64.477855
G22-148	G22-149	185-46-08	152-18-13	1.201	-1.063	0.558	-110743.618	-4579.934	-63.064	67.037032
G22-149	G22-150	182-41-45	154-59-58	0.213	-0.193	0.090	-110743.811	-4579.844	-62.416	12.046288
G22-150	G22-3	178-59-52	153-59-50	5.743	-5.162	2.518	-110748.973	-4577.326	-59.808	308.728896
G22-3	B22-1	55-06-19	29-06-09	107.373	93.817	52.223	-110655.156	-4525.103	-5.067	-475.370739
B22-1	B22-2	89-59-51	299-06-00	20.001	9.727	-17.476	-110645.429	-4542.579	29.680	288.697360
B22-2	B22-3	270-00-11	29-06-11	39.415	34.439	19.171	-110610.990	-4523.408	31.375	1080.523625
B22-3	G22-5	76-35-04	285-41-15	26.251	7.098	-25.273	-110603.892	-4548.681	25.273	179.387754
									倍面積	51366.979660
									面積	25683.4898300
									坪数	7769.25

* * 面積計算 (倍横距法) * *

地 器械点	番 : 22-1-2 視準点	内角	方向角	距離	緯距	經距	X座標	Y座標	倍横距	倍面積
B22-2	B22-1	89-59-49	119-06-00	20.001	-9.727	17.476	-110655.156	-4525.103	17.476	-169.989052
B22-1	G22-1	90-00-07	29-06-07	39.049	34.119	18.992	-110621.037	-4506.111	53.944	1840.515336
G22-1	G22-2	132-14-33	341-20-40	5.008	4.745	-1.602	-110616.292	-4507.713	71.334	338.479830
G22-2	K.71	132-05-44	293-26-24	0.468	0.186	-0.429	-110616.106	-4508.142	69.303	12.890358
K.71	K.72-1	179-19-15	292-45-39	6.498	2.514	-5.992	-110613.592	-4514.134	62.882	158.085348
K.72-1	B22-3	172-54-42	285-40-21	9.632	2.602	-9.274	-110610.990	-4523.408	47.616	123.896832
B22-3	B22-2	103-25-50	209-06-11	39.415	-34.439	-19.171	-110645.429	-4542.579	19.171	-660.230069
									倍面積	1643.648583
									面積	821.8242915
									坪数	248.60

* * 面積計算 (倍横距法) * *

地 器械点	番 : 24-1 視準点	内角	方向角	距離	緯距	經距	X座標	Y座標	倍横距	倍面積
G24-1	G24-2	91-20-18	213-15-33	17.552	-14.677	-9.626	-110831.931	-4548.879	-9.626	141.280802
G24-2	G24-3	179-50-37	213-06-10	6.387	-5.350	-3.488	-110837.281	-4552.367	-22.740	121.659000
G24-3	G24-4	179-47-10	212-53-20	3.313	-2.782	-1.799	-110840.063	-4554.166	-28.027	77.971114
G24-4	G24-5	179-47-29	212-40-49	4.328	-3.643	-2.337	-110843.706	-4556.503	-32.163	117.169809
G24-5	KH139	76-11-24	108-52-13	1.082	-0.350	1.024	-110844.056	-4555.479	-33.476	11.716600
KH139	KH140	102-28-23	31-20-36	5.100	4.356	2.653	-110839.700	-4552.826	-29.799	-129.804444
KH140	KH141	179-52-18	31-12-54	2.113	1.807	1.095	-110837.893	-4551.731	-26.051	-47.074157
KH141	KH142	179-31-15	30-44-09	8.147	7.003	4.164	-110830.890	-4547.567	-20.792	-145.606376
KH142	KH143	181-24-28	32-08-37	15.816	13.392	8.415	-110817.498	-4539.152	-8.213	-109.988496
KH143	NH15	180-05-56	32-14-33	0.154	0.130	0.082	-110817.368	-4539.070	0.284	0.036920
NH15	G24-1	89-40-42	301-55-15	0.216	0.114	-0.183	-110817.254	-4539.253	0.183	0.020862
									倍面積	37.381634
									面積	18.6908170
									坪数	5.65