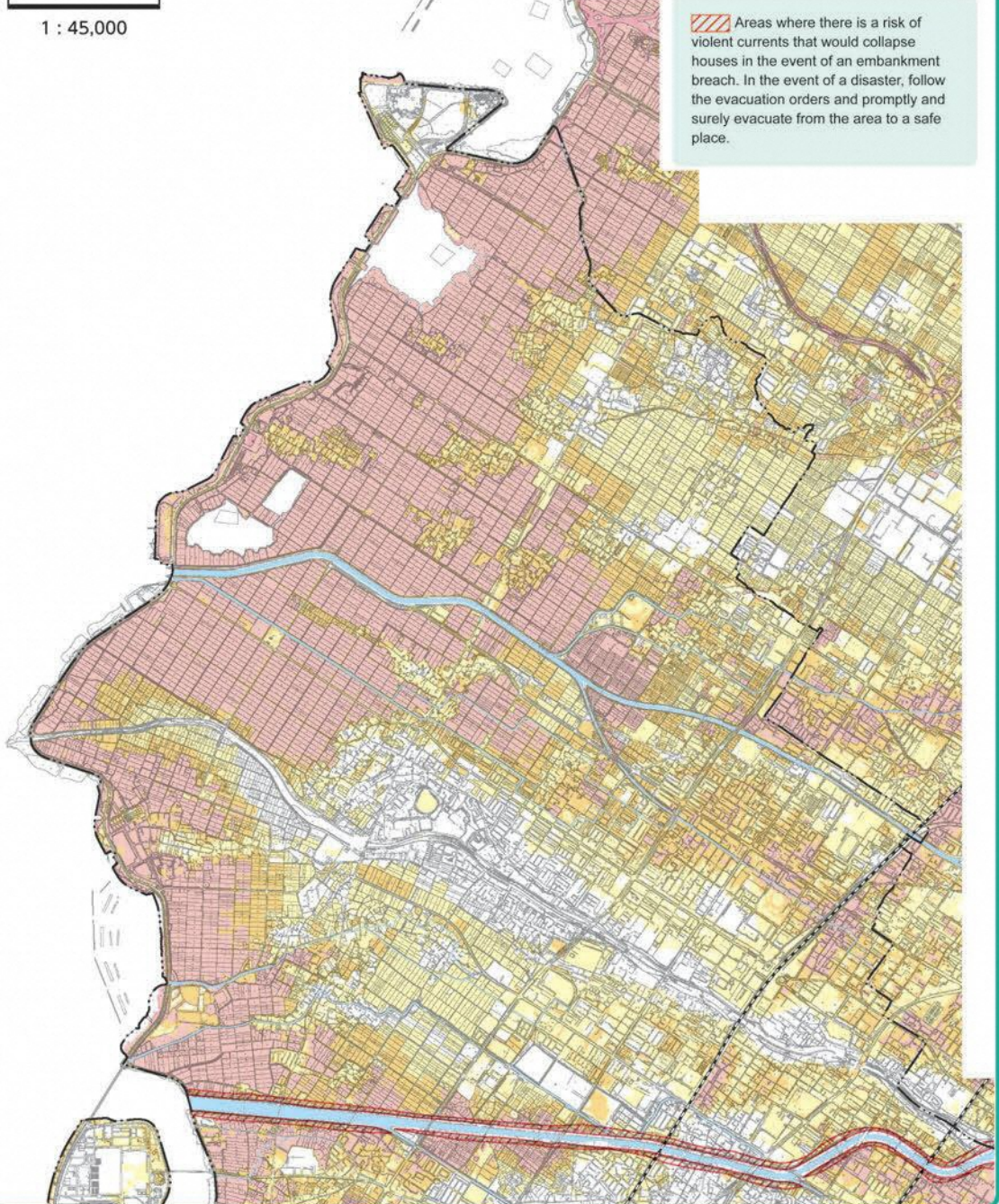


Maximum expected rainfall

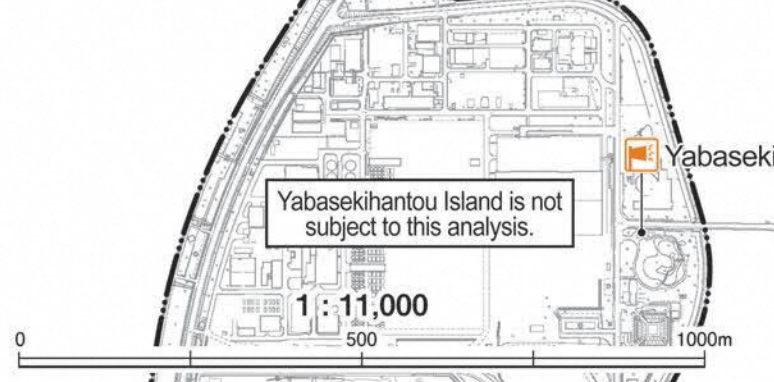
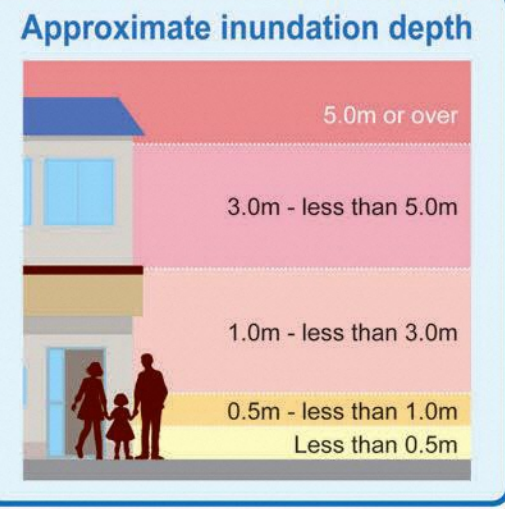
- Lake Biwa** Total rainfall of 555 mm for 120 hours in Lake Biwa basin (peak water level of Lake Biwa B.S.L.: +2.6m)
- Kusatsu River** 768 mm for 12 hours in Kusatsu River basin
- Yasu River (downstream)** Total daily rainfall of 663 mm in Yasu River basin

Safety Level Map of the Land Maximum 131 mm for an hour, 634 mm for 24 hours

*The reference water level of Lake Biwa (B.S.L.: ±0m) is the height +84.371m from the Tokyo Bay mean tidal level (T.P.: ±0m).



Name	Address	Phone number
Kusatsu Elementary School	3-14-5 Kusatsu	077-562-0124
Kusatsu Junior High School	2-16-8 Kusatsu	077-562-2125
Konan Agricultural High School	1839 Kusatsu-cho	077-564-5255
Fureai Gymnasium	1486-1 Kusatsu-cho	077-564-0271
Kusatsu Daini Elementary School	2-7-62 Oji	077-563-3800
Shibukawa Elementary School	2-8-55 Nishishibukawa	077-566-6116
Kusatsu Higashi High School	2-8-65 Nishishibukawa	077-564-4681
Ayaha High School	1-18-1 Nishishibukawa	077-563-3435
Kousen Catholic Junior and Senior High School	178 Noji-cho	077-564-5600
Yamada Elementary School	350 Kitayamada-cho	077-563-3744
Kusatsu High School	955-1 Kinokawa-cho	077-562-1220
Budokan (martial arts facilities)	683 Minamiyamada-cho	077-565-7997
Kasanui Elementary School	1-6-2 Kamigasa	077-562-0352
Matsubara Junior High School	110 Shimogasa-cho	077-568-0246
General Gymnasium	161 Shimogasa-cho	077-568-3150
Kusatsu City Arena (YMIT Arena)	3-3-27 Nomura	077-563-1265
Kasanui Higashi Elementary School	3-8-1 Hirai	077-564-4391
Shindo Junior High School	111 Shindo-cho	077-568-2990
Tokiwa Elementary School	119 Shinanaka-cho	077-568-0002



Name	Address	Phone number
Kusatsu Community Development Center	1-4-33 Kusatsu	077-564-4999
Oji Community Development Center	2-9-11 Oji	077-563-5673
Yamada Community Development Center	678 Minamiyamada-cho	077-562-0044
Kasanui Community Development Center	1-6-3 Kamigasa	077-562-0071
Kasanui Higashi Community Development Center	58-8 Atsumari-cho	077-568-3164
Tokiwa Community Development Center	111-1 Shinanaka-cho	077-568-1970
Shibukawa Community Development Center	2-9-38 Nishishibukawa	077-569-0350
Kusatsu Chuo Ohisama Kodomo-en (certified childcare center)	3-13-10 Kusatsu	077-562-7180
Tachibana Oji Kodomo-en (certified childcare center)	2-1-55 Oji	077-561-0180
Yamada Kodomo-en (certified childcare center)	672-2 Minamiyamada-cho	077-562-1340
Kasanui Kodomo-en (certified childcare center)	1-6-1 Kamigasa	077-562-6275
Kasanui Higashi Kodomo-en (certified childcare center)	3-8-2 Hirai	077-564-6595
Tokiwa Kodomo-en (certified childcare center)	278 Shinanaka-cho	077-568-1053
Kusatsu Daini Childcare Center	1350 Kusatsu-cho	077-563-1282
Daisan Childcare Center	202 Hashioka-cho	077-563-1279
Daikon Childcare Center	310-1 Ashiura-cho	077-568-0305
Nishiuchi Hall	1446-1 Kusatsu-cho	077-562-5448
Nishiuchi Educational Center	1446-1 Kusatsu-cho	077-563-1275
Hashioka Hall	71 Hashioka-cho	077-562-5864
Hashioka Educational Center	68 Hashioka-cho	077-563-3818
Shinden Hall	898-3 Kinokawa-cho	077-563-1281
Shinden Educational Center	898-15 Kinokawa-cho	077-562-5668
Tokiwa East General Center	319-1 Ashiura-cho	077-568-0224
Ashiura Educational Center	319-2 Ashiura-cho	077-568-0224

- Types of evacuation centers designated by the city**
- Wide-area evacuation center**
Intended to be a facility where disaster victims can temporarily live for a certain period of time and that can accept a large number of disaster victims.
 - Evacuation center**
A relatively small city facility that complements wide-area evacuation centers. In the event of a large-scale disaster, wide-area evacuation centers will be opened first, and then, evacuation centers will be opened depending on the local situation.
 - Emergency evacuation support facility**
A facility with which the City of Kusatsu has an agreement, to be used as an evacuation site where nearby residents and passersby who fail to escape in the event of a flood can temporarily take shelter.
 - Welfare evacuation center**
An evacuation center for those who need assistance in the event of a disaster (including elderly people, people with disabilities, and expectant and nursing mothers). People who require special attention should first evacuate to the nearest wide-area evacuation center, and then to the welfare evacuation center after the city official makes arrangements to accept them.

City of Kusatsu (Northern Part) Waters Hazard Map

Preserved Version, created in June 2021

About Flood and Inland Waters Hazard Map

This hazard map is created based on the flood and inundation-assumed area maps (planned-scale rainfall and maximum expected rainfall) newly published by the national and prefectural governments and the safety level map of the land. The assumption of flood and inundation shown on the map shows the maximum inundation area and the maximum inundation depth based on the superimposition of the results of the four types of simulation shown on the right. Please note that inundation may occur and the inundation depth may be deeper even in areas that are not colored as inundation-assumed areas due to changes in rainfall and land use conditions.

- Lake Biwa Flood and Inundation-assumed Area Map (published on March 19, 2019)
- Kusatsu River Flood and Inundation-assumed Area Map (published on October 1, 2019)
- Yasu River (Downstream) Flood and Inundation-assumed Area Map (published on June 14, 2016)
- Safety Level Map of the Land (published on March 30, 2020)

Contact information for map
River Section, Construction Department, City of Kusatsu
TEL 077-561-2397 FAX 077-561-2487
E-mail kasen@city.kusatsu.lg.jp

Planned-scale rainfall

- Lake Biwa** High water level for Lake Biwa B.S.L. +1.4m
- Kusatsu River** 369 mm for 12 hours in Kusatsu River basin
- Yasu River (downstream)** Total daily rainfall of 350 mm in Yasu River basin
- Safety Level Map of the Land** Maximum 109 mm for an hour, 529 mm for 24 hours

*The reference water level of Lake Biwa (B.S.L.: ±0m) is the height +84.371m from the Tokyo Bay mean tidal level (T.P.: ±0m).

Legend

- Wide-area evacuation center
- Evacuation center
- Welfare evacuation center
- Emergency evacuation support facility
- Police station or police box
- Fire station or volunteer fire corps
- Designated emergency hospital
- Precipitation observation station
- Water level observation station
- Speaker for disaster prevention
- Flood control warehouse
- Water gaging board
- River disaster prevention camera
- Underpass
- Administrative boundary
- Helpport

What is an underpass?
An underpass is a structure that runs under a multilevel crossing of roads and railroads. Underpasses are the first places to be flooded in heavy rains and floods.

