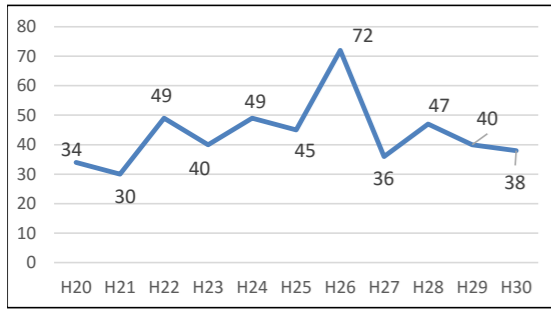
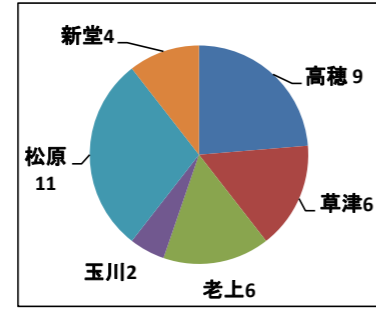


平成30年度 高齢者虐待の対応状況(平成31年3月31日現在)

(1)相談・通報件数

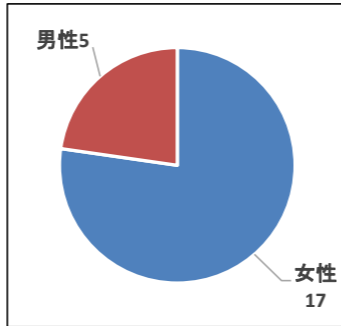


(2)包括別相談・通報件数

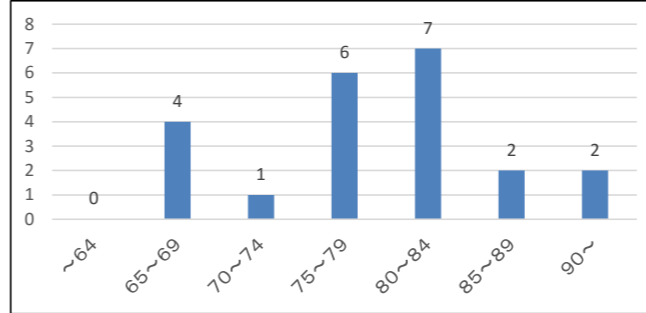


＜虐待の事実ありと判断した22件の内訳＞

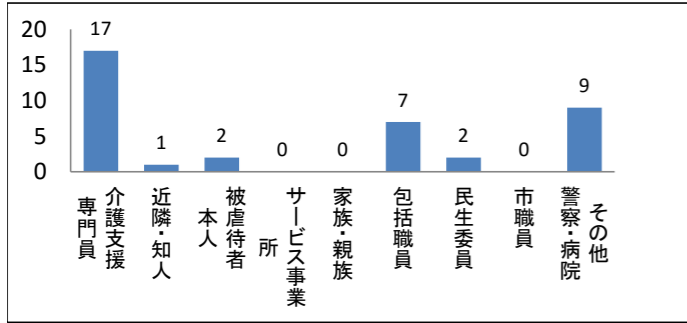
〔性別〕



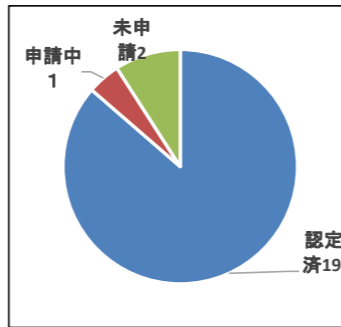
〔年齢〕



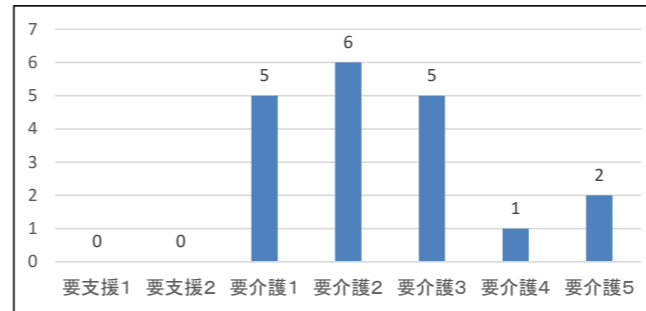
(3)相談・通報者



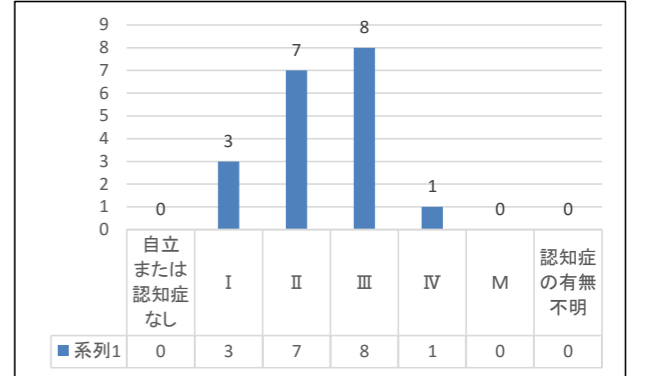
〔要介護認定〕



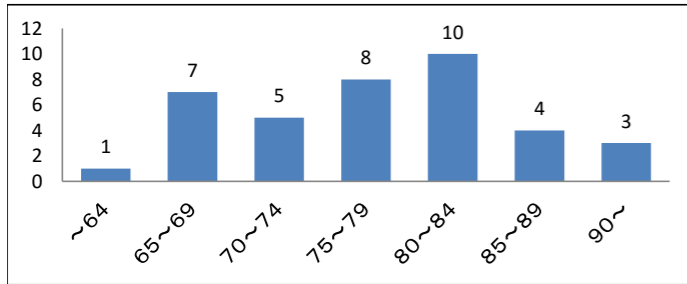
〔要介護認定者の要介護状態〕



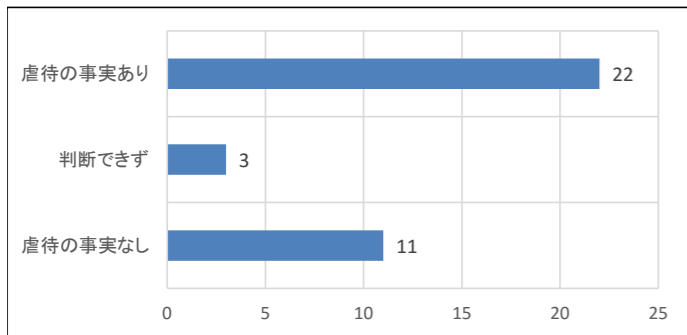
〔要介護認定者の認知症日常生活自立度〕



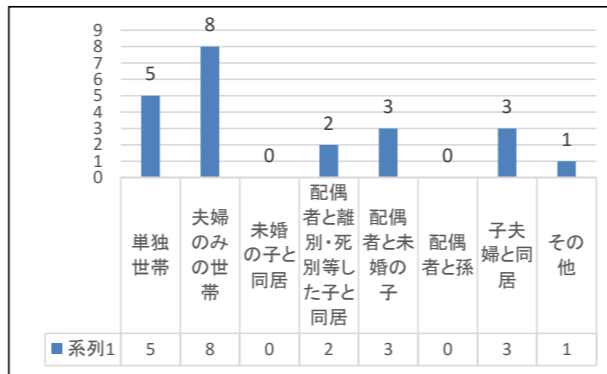
(4)年齢



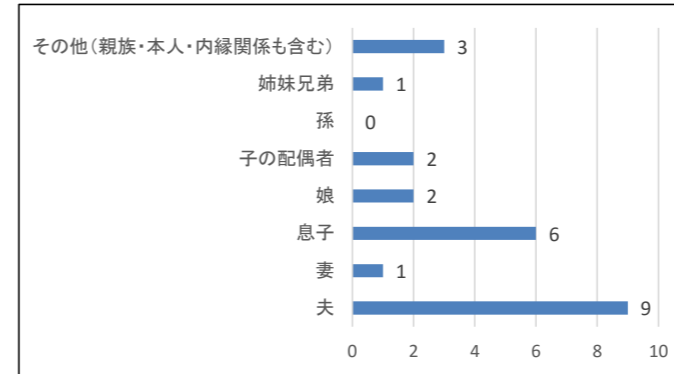
(5)事実確認の結果(未判定2件含まず)



〔家族形態〕

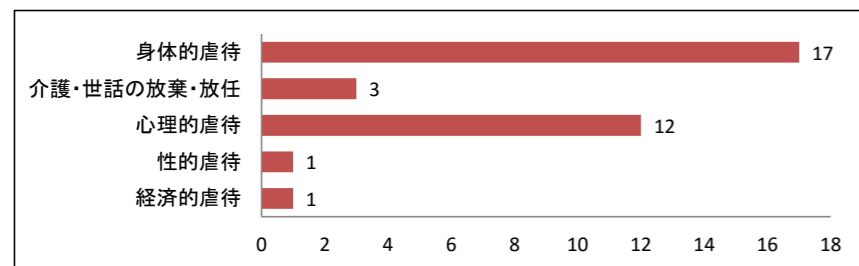


〔虐待者との関係(複数回答)]セルフネグレクト3件含む

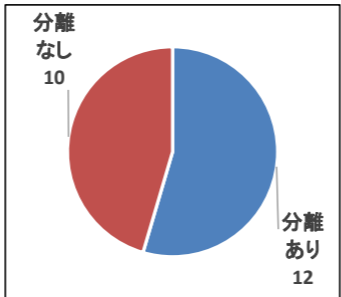


(6)虐待の事実ありと判断した22件の内訳

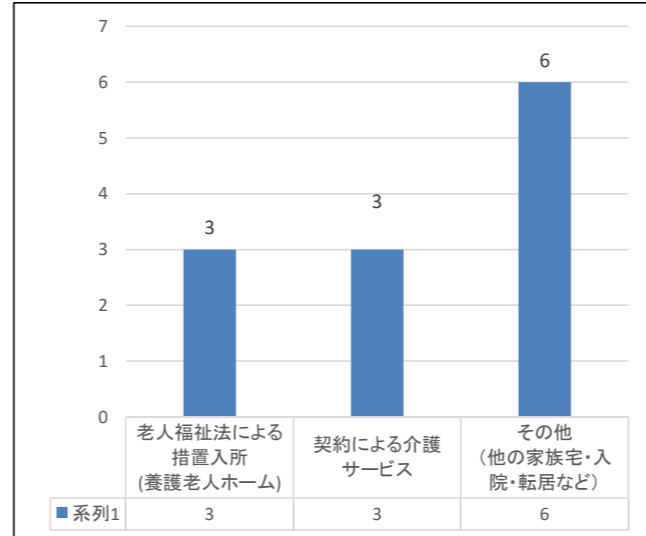
〔虐待の種別・類型(複数回答)]セルフネグレクト3件含まず



〔虐待の対応結果〕



〔分離ありの内訳〕



〔分離なしの内訳(複数回答)〕

